

MINERAL CONSERVATION COMMISSION
UNITED STATES
DEPARTMENT OF THE INTERIOR
GEOLOGICAL SURVEY

SUBMIT IN 1 PLICATE*
(Other instructions on reverse side)

Form approved.
Budget Bureau No. 42-R1425.

474 4 30-013-2732 1
4/8 7

APPLICATION FOR PERMIT TO DRILL, DEEPEN, OR PLUG BACK

1a. TYPE OF WORK

DRILL ☒

DEEPEN ☐

PLUG BACK ☐

b. TYPE OF WELL

OIL WELL ☒

GAS WELL ☐

OTHER

SINGLE ZONE ☐

MULTIPLE ZONE ☐

2. NAME OF OPERATOR

Westall - Mask

3. ADDRESS OF OPERATOR

P.O. Drawer 1477 Roswell, New Mexico 88201

4. LOCATION OF WELL (Report location clearly and in accordance with any State requirements)

At surface 330' FWH and 990' FWH

At proposed prod. zone

14. DISTANCE IN MILES AND DIRECTION FROM NEAREST TOWN OR POST OFFICE

16. DISTANCE FROM PROPOSED* LOCATION TO NEAREST PROPERTY OR LEASE LINE, FT. (Also to nearest drlg. unit line, if any)

330'

16. NO. OF ACRES IN LEASE

160

17. NO. OF ACRES ASSIGNED TO THIS WELL

40

18. DISTANCE FROM PROPOSED LOCATION* TO NEAREST WELL, DRILLING, COMPLETED, OR APPLIED FOR, ON THIS LEASE, FT.

990'

19. PROPOSED DEPTH

4200

20. ROTARY OR CABLE TOOLS

Rotary

21. ELEVATIONS (Show whether DF, RT, GR, etc.)

3618.9 gr

22. APPROX. DATE WORK WILL START*

July 25, 1983

23.

PROPOSED CASING AND CEMENTING PROGRAM

SIZE OF HOLE	SIZE OF CASING	WEIGHT PER FOOT	SETTING DEPTH	QUANTITY OF CEMENT
11"	8 5/8"	20#	650'	Approx. 250 sx to cir.
7 7/8"	4 1/2"	9.5#	4200'	Approx. 400 sx to cir.

Blowout Preventer will be Double Manuel (Schaeffer) B.O.P. with 300# test

Mud Program: We will use fresh water to 650' then use salt gel to total depth

No anticipated abnormal pressure or temperatures.

Approximate starting date July 25, 1983

Tops Yates-2600' Queen-3400' Grayburg, 4000'

IN ABOVE SPACE DESCRIBE PROPOSED PROGRAM: If proposal is to deepen or plug back, give data on present productive zone and proposed new productive zone. If proposal is to drill or deepen directionally, give pertinent data on subsurface locations and measured and true vertical depths. Give blowout preventer program, if any.

24.

SIGNED

Richard E. Brink

TITLE Trustee for the Jack Mask Trust DATE 6-22-83

(This space for Federal or State office use)

PERMIT NO.

APPROVAL DATE

APPROVED BY

James A. Gillham

TITLE ADM. MINERALS

DATE July 6, 1983

CONDITIONS OF APPROVAL, IF ANY:

*See Instructions On Reverse Side

APPROVAL SUBJECT TO
GENERAL REQUIREMENTS AND
SPECIAL STIPULATIONS
ATTACHED

RECEIVED
JUN 24 11 06 AM '83
BUREAU OF LAND MANAGEMENT
ROSSELL DISTRICT

RECEIVED

JUN 11 1983

O. C. D. ut. D
ARTESIA OFFICE

NEW MEXICO OIL CONSERVATION COMMISSION
WELL LOCATION AND ACREAGE DEDICATION PLAT

Form C-102
Supersedes C-128
Effective 1-1-65

All distances must be from the outer boundaries of the Section

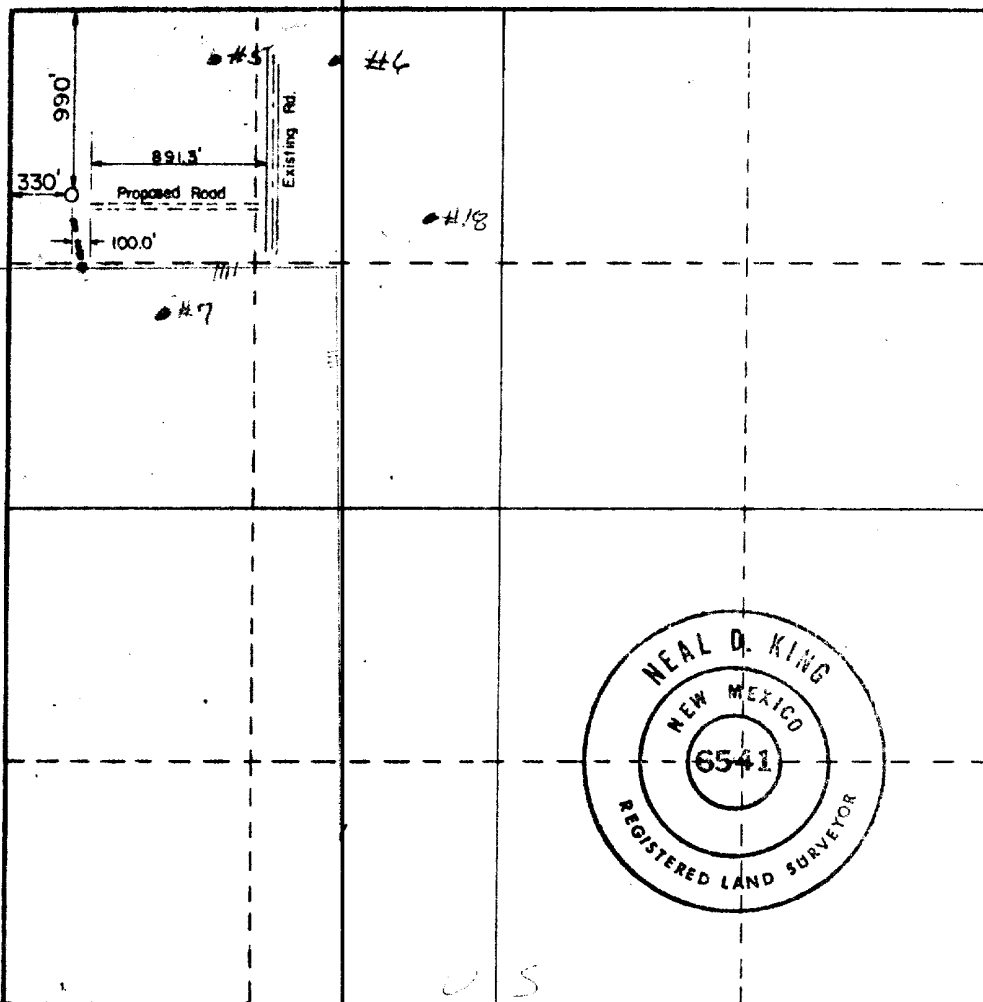
Operator Westall and Mask		Lease Hinkle B Fee		Well No. 19
Unit Letter D	Section 34	Township 18S	Range 31E	County Eddy
Actual Footage Location of Well: 330 feet from the West line and 990 feet from the North line				
Ground Level Elev. 3618.9	Producing Formation Queen Grayburg		Pool Shugart - Y-SR Q-G	Dedicated Acreage: 40 Acres

1. Outline the acreage dedicated to the subject well by colored pencil or hachure marks on the plat below.
2. If more than one lease is dedicated to the well, outline each and identify the ownership thereof (both as to working interest and royalty).
3. If more than one lease of different ownership is dedicated to the well, have the interests of all owners been consolidated by communitization, unitization, force-pooling, etc?

☐ Yes ☐ No If answer is "yes," type of consolidation _____

If answer is "no," list the owners and tract descriptions which have actually been consolidated. (Use reverse side of this form if necessary.) _____

No allowable will be assigned to the well until all interests have been consolidated (by communitization, unitization, forced-pooling, or otherwise) or until a non-standard unit, eliminating such interests, has been approved by the Commission.



CERTIFICATION

I hereby certify that the information contained herein is true and complete to the best of my knowledge and belief.

Richard E. Barton

Name

Richard E. Barton

Trustee of the Jack Mask Trust

Company

Westall - Mask

Date

6-3-83

I hereby certify that the well location shown on this plat was plotted from field notes of actual surveys made by me or under my supervision, and that the same is true and correct to the best of my knowledge and belief.

Date Surveyed

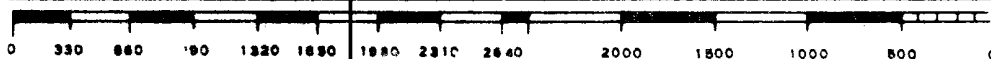
May 23, 1983

Registered Professional Engineer and/or Land Surveyor

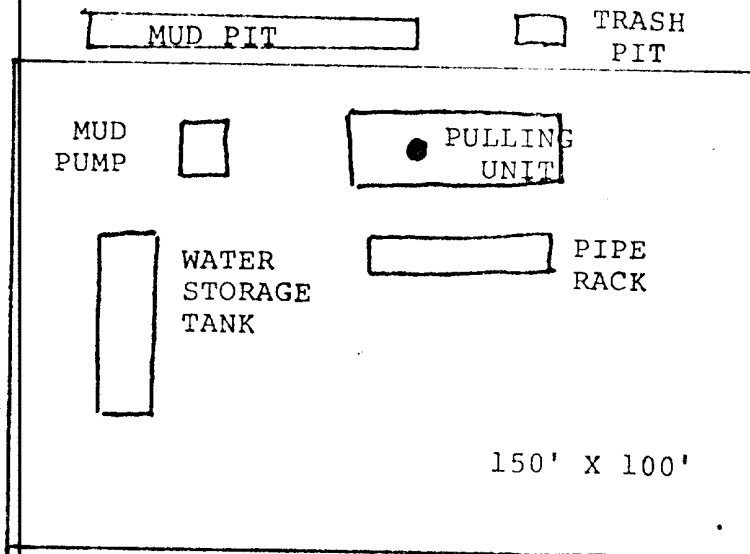
Neal D. King R.L.S.

Certificate No.

6541



Schedule 2



DEVELOPMENT PLAN FOR SERVICE USE

WESTALL-MASK, ROSWELL, NEW MEXICO 88201

- Schedule 1

CLAYTON BA
15-M N

