

Submit to Appropriate District Office
 State Lease - 4 copies
 Fee Lease - 3 copies

State of New Mexico
 Energy, Minerals and Natural Resources Department

Form C-102
 RECEIVED

OIL CONSERVATION DIVISION

P.O. Box 2088
 Santa Fe, New Mexico 87504-2088

MAR 26 11 13 AM '91

DISTRICT I
 P.O. Box 1980, Hobbs, NM 88240

DISTRICT II
 P.O. Drawer DD, Artesia, NM 88210

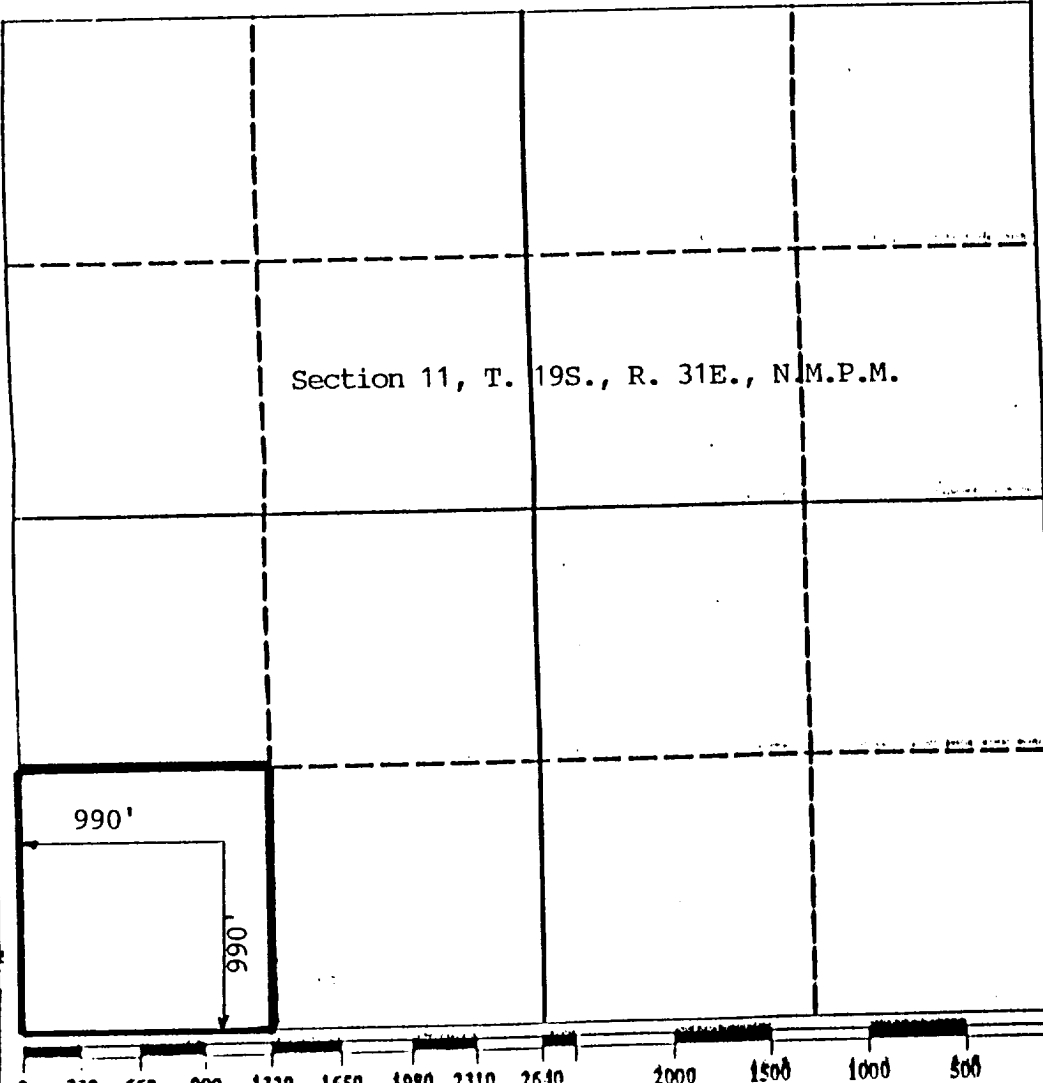
DISTRICT III
 1000 Rio Brazos Rd., Aztec, NM 87410

WELL LOCATION AND ACREAGE DEDICATION PLAT

All Distances must be from the outer boundaries of the Section

Operator Woodbine Petroleum			Lease Yates Federal		Well No. #3
Unit Letter M	Section 11	Township 19S.	Range 31E.	County Eddy	
Actual Footage Location of Well: 990 feet from the West line and 990 feet from the South line					
Ground level Elev. 3566	Producing Formation Yates/Seven Rivers		Pool Undesignated		Dedicated Acreage: 40 Acres

- Outline the acreage dedicated to the subject well by colored pencil or hatchure marks on the plat below.
- If more than one lease is dedicated to the well, outline each and identify the ownership thereof (both as to Working Interest and royalty). N/A
- If more than one lease of different ownership is dedicated to the well, have the interest of all owners been consolidated by communitization, unitization, force-pooling, etc.?
 Yes No If answer is "yes" type of consolidation N/A
 If answer is "no" list the owners and tract descriptions which have actually been consolidated. (Use reverse side of this form if necessary).
 No allowable will be assigned to the well until all interests have been consolidated (by communitization, unitization, force-pooling, or otherwise) or until a non-standard unit, eliminating such interest, has been approved by the Division.



OPERATOR CERTIFICATION
 I hereby certify that the information contained herein is true and complete to the best of my knowledge and belief.

Signature: *W. L. Shackelford*
 Printed Name: W. L. Shackelford
 Position: Agent
 Company: Woodbine Petroleum, Inc
 Date: March 25, 1991

SURVEYOR CERTIFICATION
 I hereby certify that the well location shown on this plat was plotted from field notes of actual surveys made by me or under my supervision, and that the same is true and correct to the best of my knowledge and belief.

Date Surveyed: 3-22-91
 Signature & Seal of Professional Surveyor: *John Jaquess*
 Certificate No. 6290
 PROFESSIONAL ENGINEER