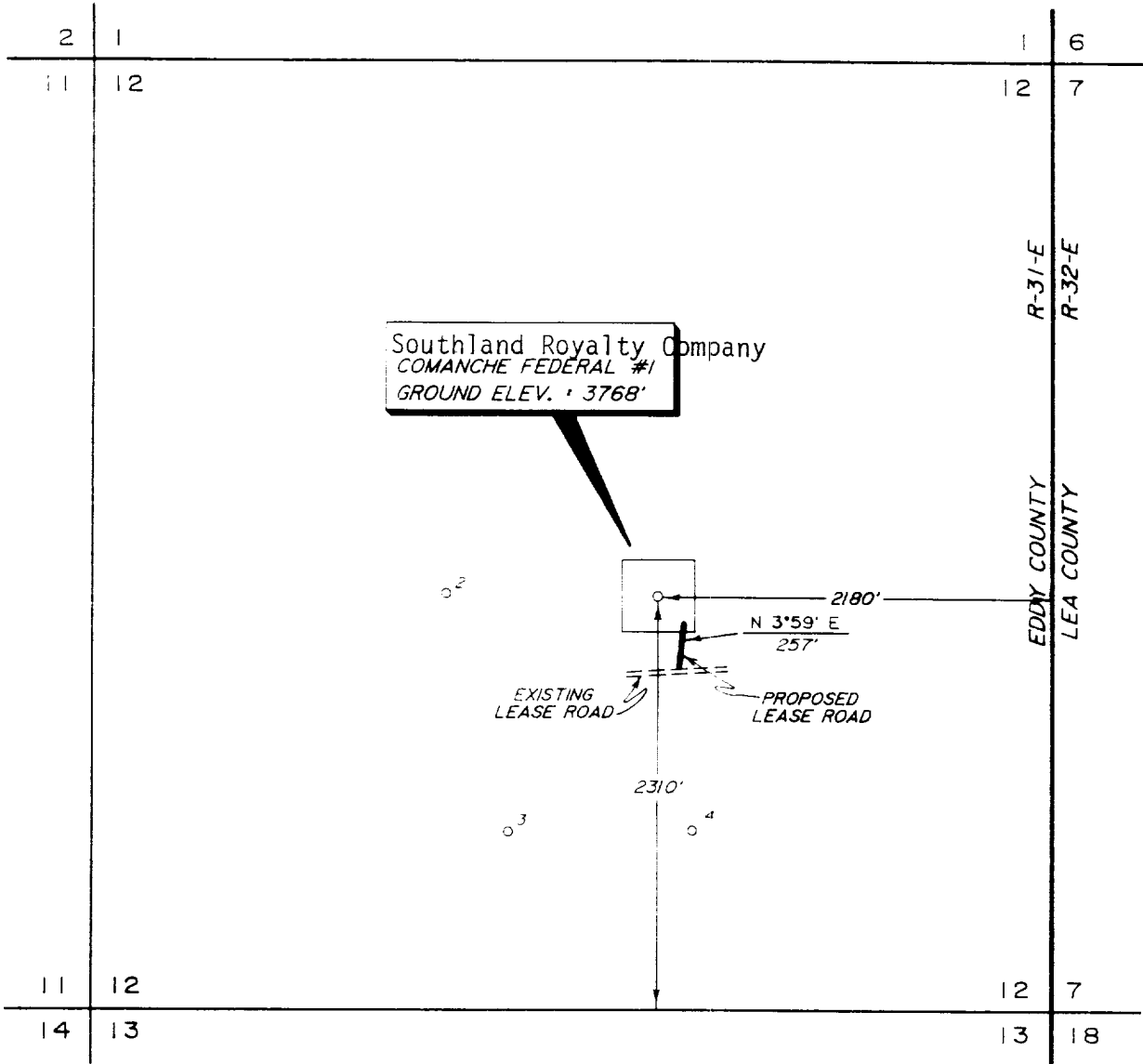
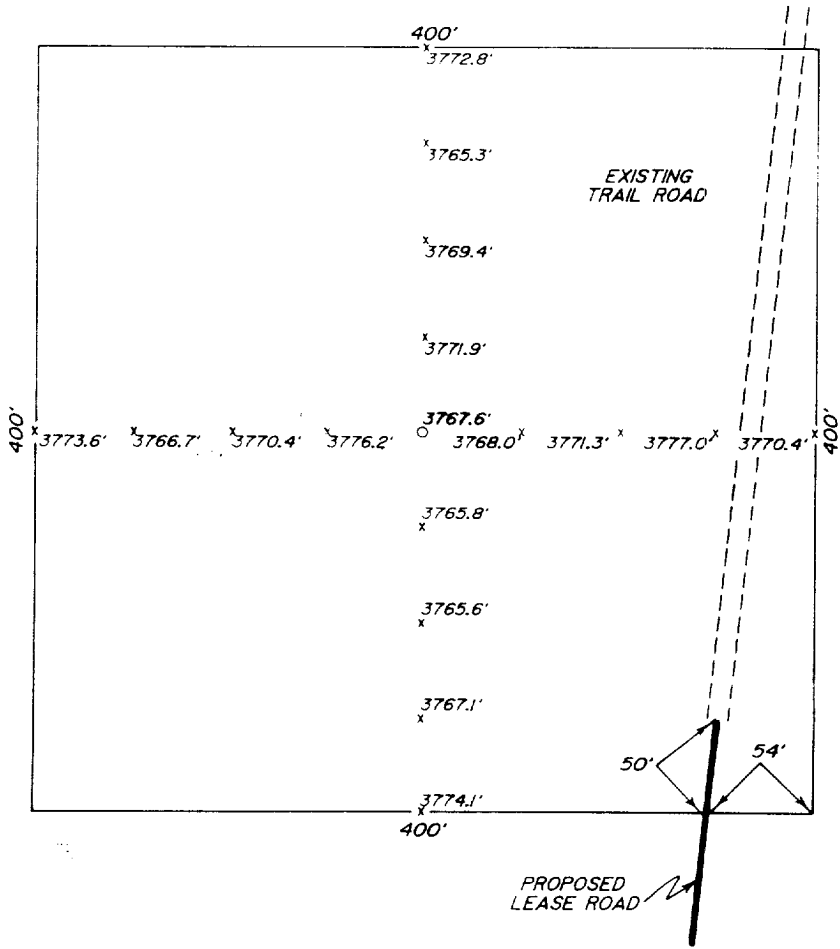


PLAT SHOWING PROPOSED -  
WELL LOCATION and LEASE ROAD in  
SECTION 12, T-18-S, R-31-E,  
EDDY COUNTY, NEW MEXICO

FROM THE T. OF U.S. 82 & HWY 31, 6 MILES EAST OF  
LOCO HILLS, GO SOUTH 4.0 MILES ON HWY 31, THENCE  
SOUTHEAST 1.1 MILES ON COUNTY ROAD, THENCE EAST  
2.1 MILES ON LEASE ROAD TO THE SOUTHWEST  
CORNER OF SECTION 12.



PLAN VIEW  
1" = 1000'



DETAIL VIEW  
1" = 100'

				MERIDIAN OIL INC.  MIDLAND, TEXAS	SCALE • AS SHOWN
					DATE • FEBRUARY 6, 1991
NO.	REVISION	DATE	BY		JOB NO. • 82647
SURVEYED BY • G.W.S.				SURVEYING AND MAPPING BY TOPOGRAPHIC LAND SURVEYORS  MIDLAND, TEXAS	98 SE
DRAWN BY • V.G.H.					SHEET 1 OF 1
APPROVED BY • D.R.K.					