

State of New Mexico
Energy, Minerals and Natural Resources Department

Form C-102
Revised 1-1-89

OIL CONSERVATION DIVISION

P.O. Box 2088
Santa Fe, New Mexico 87504-2088

Submit to Appropriate
District Office
State Lease - 4 copies
Fee Lease - 3 copies

DISTRICT I
P.O. Box 1980, Hobbs, NM 88240

DISTRICT II
P.O. Drawer DD, Artesia, NM 88210

DISTRICT III
1000 Rio Brazos Rd., Aztec, NM 87410

WELL LOCATION AND ACREAGE DEDICATION PLAT

All Distances must be from the outer boundaries of the section

Operator Woodbine Petroleum			Lease Hadson Federal		Well No. #3
Unit Letter G	Section 11	Township 19S.	Range 31E.	County NMPM	Eddy
Actual Footage Location of Well: 2540 feet from the North line and 2310 feet from the East line					
Ground level Elev. 3586	Producing Formation Yates/Seven Rivers		Pool Undesignated	Dedicated Acreage: 40 Acres	

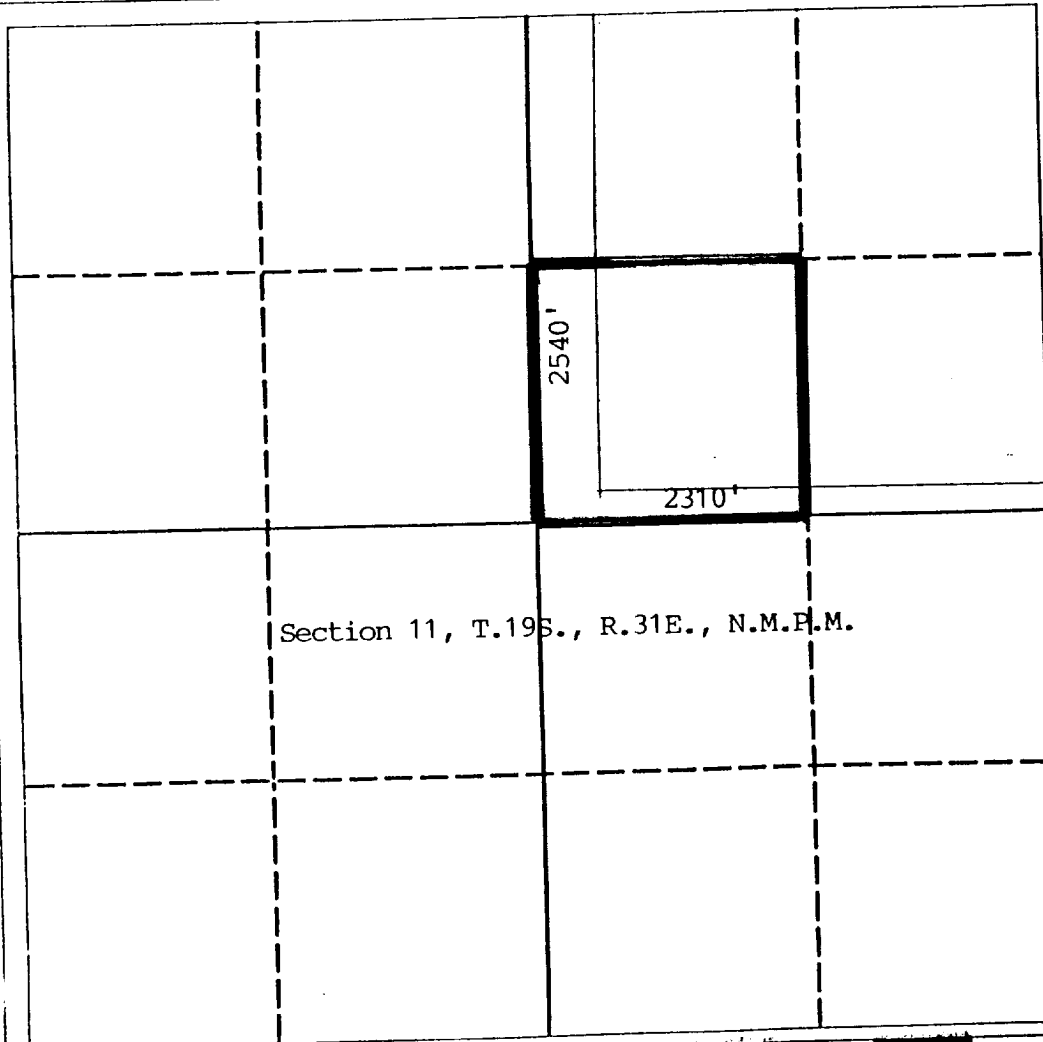
1. Outline the acreage dedicated to the subject well by colored pencil or hachure marks on the plat below.

2. If more than one lease is dedicated to the well, outline each and identify the ownership thereof (both as to working interest and royalty). N/A

3. If more than one lease of different ownership is dedicated to the well, have the interest of all owners been consolidated by communitization, unitization, force-pooling, etc.? N/A

☐ Yes ☐ No If answer is "yes" type of consolidation N/A
If answer is "no" list the owners and tract descriptions which have actually been consolidated. (Use reverse side of this form if necessary.)

No allowable will be assigned to the well until all interests have been consolidated (by communitization, unitization, forced-pooling, or otherwise) or until a non-standard unit, eliminating such interest, has been approved by the Division.



OPERATOR CERTIFICATION

I hereby certify that the information contained herein in true and complete to the best of my knowledge and belief.

Signature
W. L. Shackelford
Printed Name
W. L. Shackelford
Position
Agent
Company
Woodbine Petroleum, Inc
Date
May 3, 1991

SURVEYOR CERTIFICATION

I hereby certify that the well location shown on this plat was plotted from field notes of actual surveys made by me or under my supervision, and that the same is true and correct to the best of my knowledge and belief.

Date Surveyed
3/22/91

Signature & Seal of
Professional Surveyor

Professional Engineer
Certificate No. 6290