

30-015-26738
Form approved.
Budget Bureau No. 1004-0136
Expires August 31, 1985

UNITED STATES
DEPARTMENT OF THE INTERIOR
BUREAU OF LAND MANAGEMENT
Artesia, NM 88210

5. LEASE DESIGNATION AND SERIAL NO.
NM-27055

6. IF INDIAN, ALLOTTEE OR TRIBE NAME

7. UNIT AGREEMENT NAME

8. FARM OR LEASE NAME
Prickly Pear "AIE" Fed. Com.

9. WELL NO.
1

10. FIELD AND POOL, OR WILDCAT
S. Dagger Draw Upper Penn

11. SEC., T., R., M., OR BLK. AND SURVEY OR AREA
Sec. 23-T20S-R24E

12. COUNTY OR PARISH
Eddy

13. STATE
NM

16. NO. OF ACRES IN LEASE
990'

17. NO. OF ACRES ASSIGNED TO THIS WELL
320

18. DISTANCE FROM PROPOSED LOCATION* TO NEAREST WELL, DRILLING, COMPLETED, OR APPLIED FOR, ON THIS LEASE, FT.
8250'

20. ROTARY OR CABLE TOOLS
Rotary

22. APPROX. DATE WORK WILL START*
ASAP

APPLICATION FOR PERMIT TO DRILL, DEEPEN, OR PLUG BACK

1a. TYPE OF WORK
DRILL DEEPEN PLUG BACK

b. TYPE OF WELL
OIL WELL GAS WELL OTHER

2. NAME OF OPERATOR
Yates Petroleum Corporation

3. ADDRESS OF OPERATOR
105 South Fourth Street, Artesia, NM 88210

4. LOCATION OF WELL (Report location clearly and in accordance with any State requirements)
At surface
990' FSL & 990' FEL
At proposed prod. zone
same

14. DISTANCE IN MILES AND DIRECTION FROM NEAREST TOWN OR POST OFFICE*
Approximately 32 miles southwest of Artesia, NM

15. DISTANCE FROM PROPOSED* LOCATION TO NEAREST PROPERTY OR LEASE LINE, FT. (Also to nearest drlg. unit line, if any)
990'

16. NO. OF ACRES IN LEASE
990'

17. NO. OF ACRES ASSIGNED TO THIS WELL
320

18. DISTANCE FROM PROPOSED LOCATION* TO NEAREST WELL, DRILLING, COMPLETED, OR APPLIED FOR, ON THIS LEASE, FT.
8250'

20. ROTARY OR CABLE TOOLS
Rotary

21. ELEVATIONS (Show whether DF, RT, GR, etc.)
3636'

22. APPROX. DATE WORK WILL START*
ASAP

PROPOSED CASING AND CEMENTING PROGRAM

SIZE OF HOLE	SIZE OF CASING	WEIGHT PER FOOT	SETTING DEPTH	QUANTITY OF CEMENT
14 3/4"	9 5/8"	36# J-55	1200'	1100 sacks circulated
8 3/4"	7"	23-26#	TD	As warranted (tie back above Wolfcamp)
		J-55 & N-80		

Part ID-1
5-10-91
New Log & API

Yates Petroleum Corporation proposes to drill and test the Canyon and intermediate formations. Approximately 1200' of surface casing will be set and cement circulated to shut off gravel and cavings. If commercial, production will be run and cemented, will perforate and stimulate as needed for production.

MUD PROGRAM: FW Gel/LCM to 1200'; FW to 5000'; cut Brine to 7200'; SW Gel/Starch to TD.

BOP PROGRAM: BOP's and hydrill will be installed on 9 5/8" casing and tested daily.

IN ABOVE SPACE DESCRIBE PROPOSED PROGRAM: If proposal is to deepen or plug back, give data on present productive zone and proposed new productive zone. If proposal is to drill or deepen directionally, give pertinent data on subsurface locations and measured and true vertical depths. Give blowout preventer program, if any.

24. SIGNED Ken Beard TITLE Landman DATE 3-28-91

(This space for Federal or State office use)

PERMIT NO. _____ APPROVAL DATE _____

APPROVED BY _____ TITLE _____ DATE 5-2-91

CONDITIONS OF APPROVAL, IF ANY:

APPROVAL SUBJECT TO
GENERAL REQUIREMENTS AND
SPECIAL STIPULATIONS

*See Instructions On Reverse Side

NEW MEXICO OIL CONSERVATION COMMISSION
WELL LOCATION AND ACREAGE DEDICATION PLAT

Form C-102
Supersedes C-128
Effective 1-1-65

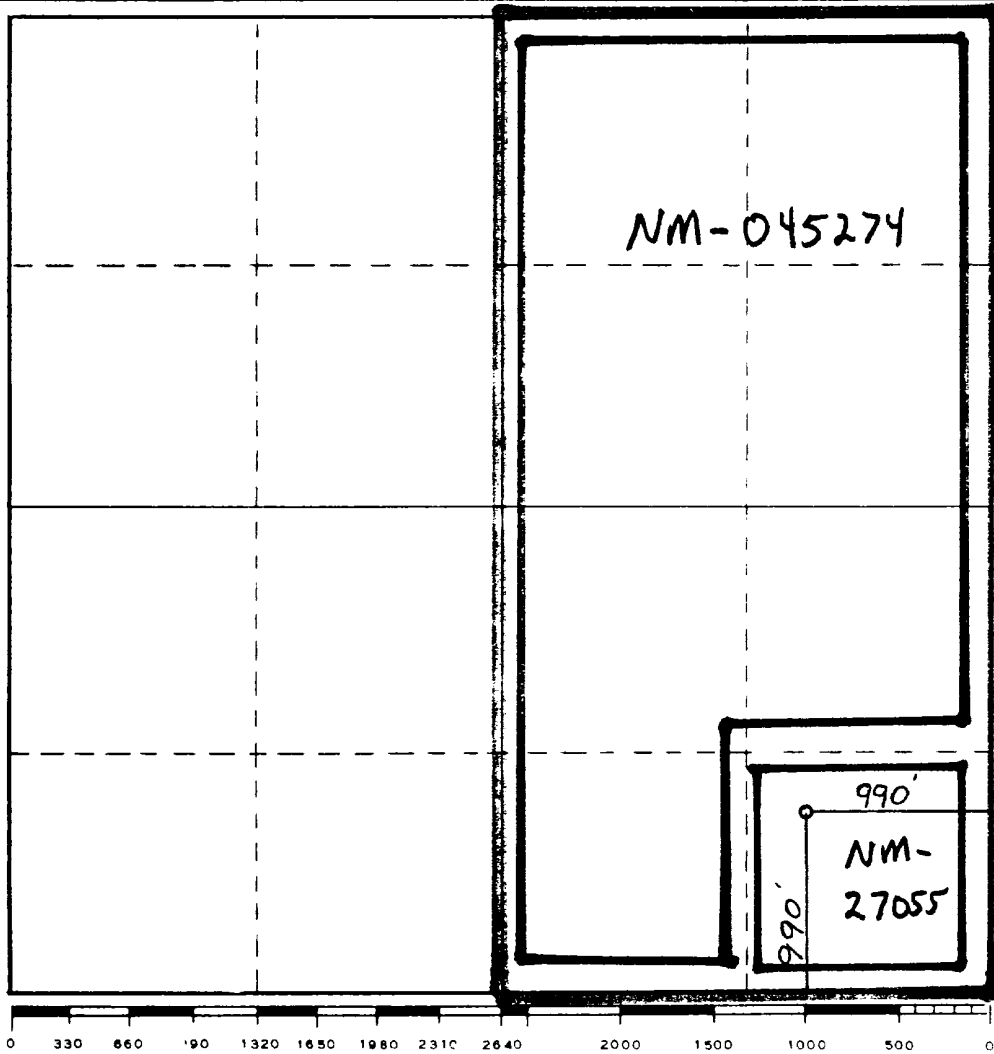
All distances must be from the outer boundaries of the Section

Operator YATES PETROLEUM CORPORATION			Lease Prickly Pear ATE Federal Com			Well No. 1
Unit Letter P	Section 23	Township 20 South	Range 24 East	County Eddy County, N.M.		
Actual Footage Location of Well: 990 feet from the South line and 990 feet from the East line						
Ground Level Elev. 3636.	Producing Formation Gnym		Pool S. Dagger Draw Upper Penn	Dedicated Acreage 320 Acres		

1. Outline the acreage dedicated to the subject well by colored pencil or hachure marks on the plat below.
2. If more than one lease is dedicated to the well, outline each and identify the ownership thereof (both as to working interest and royalty).
3. If more than one lease of different ownership is dedicated to the well, have the interests of all owners been consolidated by communitization, unitization, force-pooling, etc?

Yes No If answer is "yes," type of consolidation Communitization

If answer is "no," list the owners and tract descriptions which have actually been consolidated. (Use reverse side of this form if necessary.) _____
 No allowable will be assigned to the well until all interests have been consolidated (by communitization, unitization, forced-pooling, or otherwise) or until a non-standard unit, eliminating such interests, has been approved by the Commission.



CERTIFICATION

I hereby certify that the information contained herein is true and complete to the best of my knowledge and belief.

Ken Boardman
Name
KEN BOARDMAN

Position
LANDMAN

Company
Yates Pet. Corp.

Date
3-28-91

I hereby certify that the well location shown on this plat was plotted from field notes of actual surveys made by me or under my supervision, and that the same are true and correct to the best of my knowledge and belief.

Date Surveyed
March 18, 1991

Registered Professional Engineer and/or Land Surveyor
An R. Reddy

Certificate No.
NM PE&PS NO. 5412

YATES PETROLEUM CORPORATION

**Prickly Pear "AIE" Fed. Com. #1
990' FSL and 660' FEL
Section 23-T20S-R24E
Eddy County, New Mexico**

In conjunction with Form 3160-3, Application for Permit to Drill subject well, Yates Petroleum Corporation submits the following ten items of pertinent information in accordance with BLM requirements.

1. The geological surface formation is Alluvium:
2. The estimated tops of geologic markers are as follows:

San Andres	618'
Glorieta	2,157'
Bone Spring Lime	3,600'
3rd Bone Spring Sand	5,618'
Abo Green Shale	5,905'
Wolfcamp Lime	6,242'
Canyon Lime	7,548'
Canyon Dolomite	7,681'
Base Canyon Dolomite	7,941'
TD	8,250'
3. The estimated depths at which anticipated water, oil or gas formations are expected to be encountered:

Water:	Approximately 275'
Oil or Gas:	Wolfcamp, Canyon
- 4: Proposed Casing Program: See Form 3160-3.
5. Pressure Control Equipment: See Form 3160-3 and Exhibit B.
6. Mud Program: See Form 3160-3.
7. Auxiliary Equipment: Kelly Cock; pit level indicators and flow sensor equipment; sub with full-opening valve on floor, drill pipe connections.
8. Testing, Logging and Coring Program:

Samples: 10' samples from 500' depth to TD.

DST's: As warranted by drilling breaks and shows.

Logging: CNL-LDT from TD to casing, with GR-CNL up to surface;
DLL with RxO from TD to casing.
9. No abnormal pressures or temperatures are anticipated.
10. Anticipated starting date: As soon as possible after approval.

MULTI-POINT SURFACE USE AND OPERATIONS PLAN

**Yates Petroleum Corporation
Prickly Pear "AIE" Fed. Com. #1
990' FSL and 660' FEL
Section 23-T20S-R24E
Eddy County, New Mexico**

This plan is submitted with Form 3160-3, Application for Permit to Drill, covering the above described well. The purpose of this plan is to describe the location of the proposed well, the proposed construction activities and operations plan, the magnitude of the surface disturbance involved and the procedures to be followed in rehabilitating the surface after completion of the operations, so that a complete appraisal can be made of the environmental effect associated with the operations.

1. EXISTING ROADS:

Exhibit A is a portion of BLM map showing the well and roads in the vicinity of the proposed location. The proposed wellsite is located approximately 31 miles southwest of Artesia, New Mexico, and the access route to the location is indicated in red and green on Exhibit A.

DIRECTIONS:

1. Go south of Artesia on Highway 285 for approximately 15 miles to Rock Daisy Road.
2. Turn west and go approximately 8.2 miles to Sawbucks Road.
3. Turn south approximately 3.4 miles to Pickett Road..
4. Turn east and go approximately 1 mile.
5. Turn south on lease road for approximately 3/4 of a mile.
6. Turn to the Hillview "AHE" Fed. #4 location.
7. New road starts here.

2. PLANNED ACCESS ROAD

- A. The proposed new access will be approximately 1500' in length from point of origin to the southwest edge of the drilling pad. The road will lie in a northwest to southeast direction.
- B. The new road will be 14 feet in width (driving surface) and will be adequately drained to control runoff and soil erosion.
- C. The new road will be bladed with drainage on one side. No traffic turnout will be built.

3. LOCATION OF EXISTING WELL

- A. There is drilling activity within a one-mile radius of the wellsite.
- B. Exhibit D shows existing wells within a one-mile radius of the proposed wellsite.

4. LOCATION OF EXISTING AND/OR PROPOSED FACILITIES

- A. There are no production facilities on this lease at the present time.
- B. In the event that the well is productive, the necessary production facilities will be installed on the drilling pad. If the well is productive oil, a gas or diesel self-contained unit will be used to provide the necessary power. No power will be required if the well is productive of gas.

5. LOCATION AND TYPE OF WATER SUPPLY:

- A. It is planned to drill the proposed well with a fresh water system. The water will be obtained from commercial sources and will be hauled to the location by truck over the existing and proposed roads shown in Exhibit A.

6. SOURCE OF CONSTRUCTION MATERIALS:

Private located in Section 22-T20S-R24E.

7. METHODS OF HANDLING WASTE DISPOSAL:

- A. Drill cuttings will be disposed of in the reserve pits.
- B. Drilling fluids will be allowed to evaporate in the reserve pits until the pits are dry.
- C. Water produced during operations will be collected in tanks until hauled to an approved disposal system, or separate disposal application will be submitted.
- D. Oil produced during operations will be stored in tanks until sold.
- E. Current laws and regulations pertaining to the disposal of human waste will be complied with.
- F. Trash, waste paper, garbage and junk will be buried in a separate trash pit and covered with a minimum of 24 inches of dirt. All waste material will be contained to prevent scattering by the wind.
- G. All trash and debris will be buried or removed from the wellsite within 30 days after finishing drilling and/or completion operations.

8. ANCILLARY FACILITIES:

- A. None required.

9. WELLSITE LAYOUT:

- A. Exhibit C shows the relative location and dimensions of the well pad, the reserve pits, the location of the drilling equipment, rig orientation and access road approach. A cross section of a drill pad with approximate cuts, fills and pad orientation is shown on Exhibit E.
- B. The reserve pits will be plastic lined.
- C. A 400' x 400' area has been staked and flagged.

10. PLANS FOR RESTORATION

- A. After finishing drilling and/or completion operations, all equipment and other material not needed for further operations will be removed. The location will be cleaned of all trash and junk to leave the wellsite in as aesthetically pleasing a condition as possible.
- B. Unguarded pits, if any, containing fluids will be fenced until they have dried and been levelled.
- C. If the proposed well is non-productive, all rehabilitation and/or vegetation requirements of the BLM will be complied with and will be accomplished as expeditiously as possible. All pits will be filled level within 90 days after abandonment.

11. SURFACE OWNERSHIP: BLM (Carlsbad, NM)

12. OTHER INFORMATION:

- A. Topography: Refer to the existing archaeological report for a description of the topography, flora, fauna, soil characteristics, dwellings, historical and cultural sites.
- B. The primary surface use is for grazing.

13. OPERATOR'S REPRESENTATIVE

A. Through A.P.D. Approval:

Ken Beardemphl, Landman
Yates Petroleum Corporation
105 South Fourth Street
Artesia, New Mexico 88210
Phone (505) 748-1471

B. Through Drilling Operations,
Completions and Production:

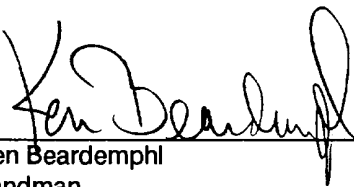
Mike Slater, Operations Manager
Yates Petroleum Corporation
105 South Fourth Street
Artesia, New Mexico 88210
Phone (505) 748-1471

14. CERTIFICATION:

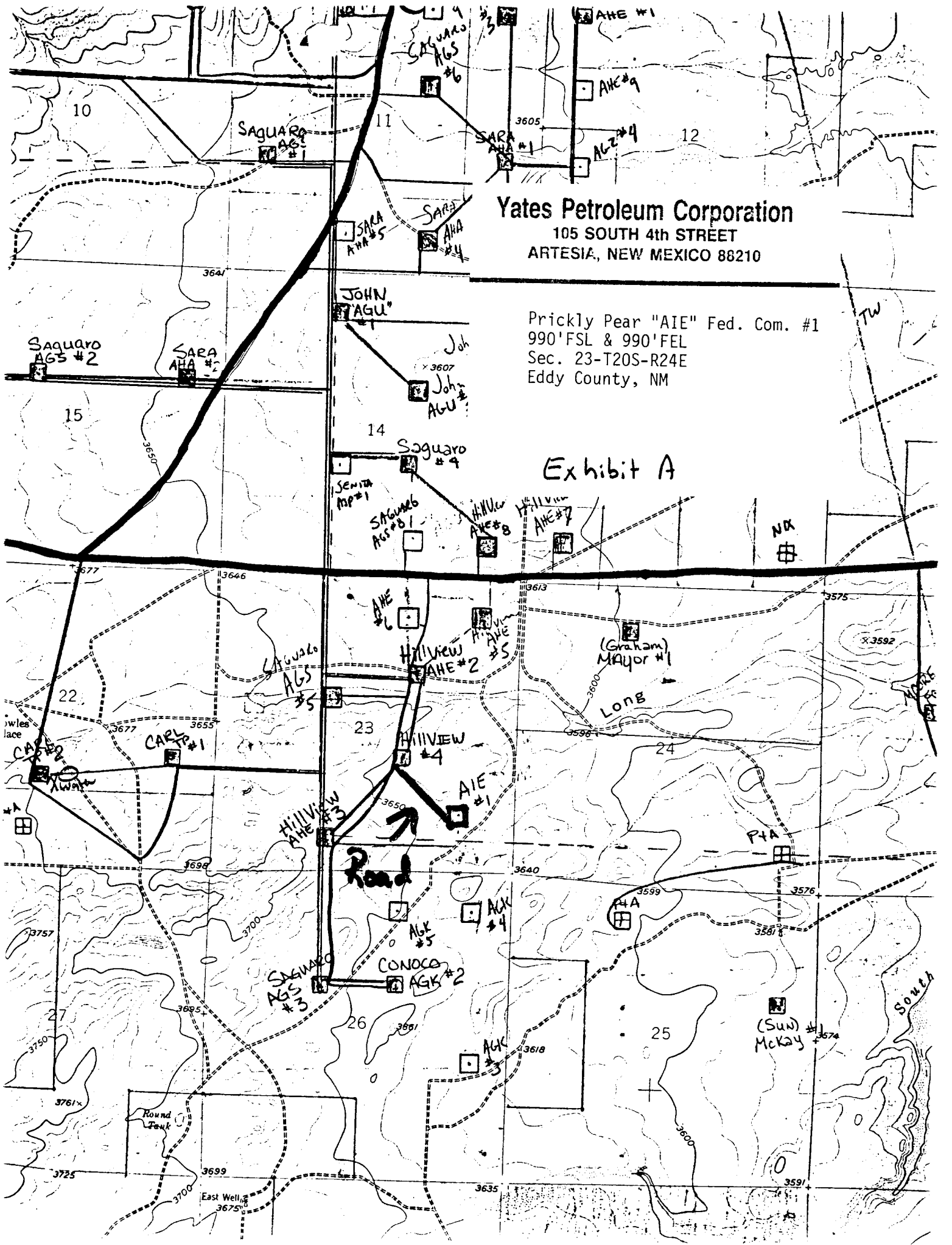
I hereby certify that I, or persons under my direct supervision, have inspected the proposed drillsite and access route, that I am familiar with the conditions which presently exist; that the statements made in this plan are to the best of my knowledge, true and correct; and , that the work associated with the operations proposed herein will be performed by Yates Petroleum Corporation and its contractors and subcontractors in conformity with this plan and the terms and conditions under which it is approved. This statement is subject to the provisions of 18 U.S.C. 1001 for the filing of a false statement.

3-28-91

Date



Ken Beardemphl
Landman



Yates Petroleum Corporation
 105 SOUTH 4th STREET
 ARTESIA, NEW MEXICO 88210

Prickly Pear "AIE" Fed. Com. #1
 990' FSL & 990' FEL
 Sec. 23-T20S-R24E
 Eddy County, NM

Exhibit A

Road

Round Tank

East Well

LONG

(Graham) MAJOR #1

(Sun) MCKAY #1

P+A

NK

X 3592

SOUTH

TW

SAGUARO AGS #2

SARA AHA #2

JOHN TAGU #1

John TAGU #1

SAGUARO #9

SAGUARO AGS #1

HILLVIEW AHE #8

HILLVIEW AHE #7

AHE #6

HILLVIEW AHE #2

HILLVIEW #4

AIE #1

HILLVIEW AHE #3

CONOCO AGK #2

AGK #5

AGK #4

SAGUARO AGS #3

AGK #3

P+A

P+A

10

11

12

15

14

22

23

24

27

26

25

3647

3605

3630

3677

3646

3613

3575

3677

3655

3613

3575

3699

3650

3640

3757

3700

3600

3596

3761

3699

3600

3725

3700

3635

3591

3675

3591

YATES PETROLEUM CORPORATION

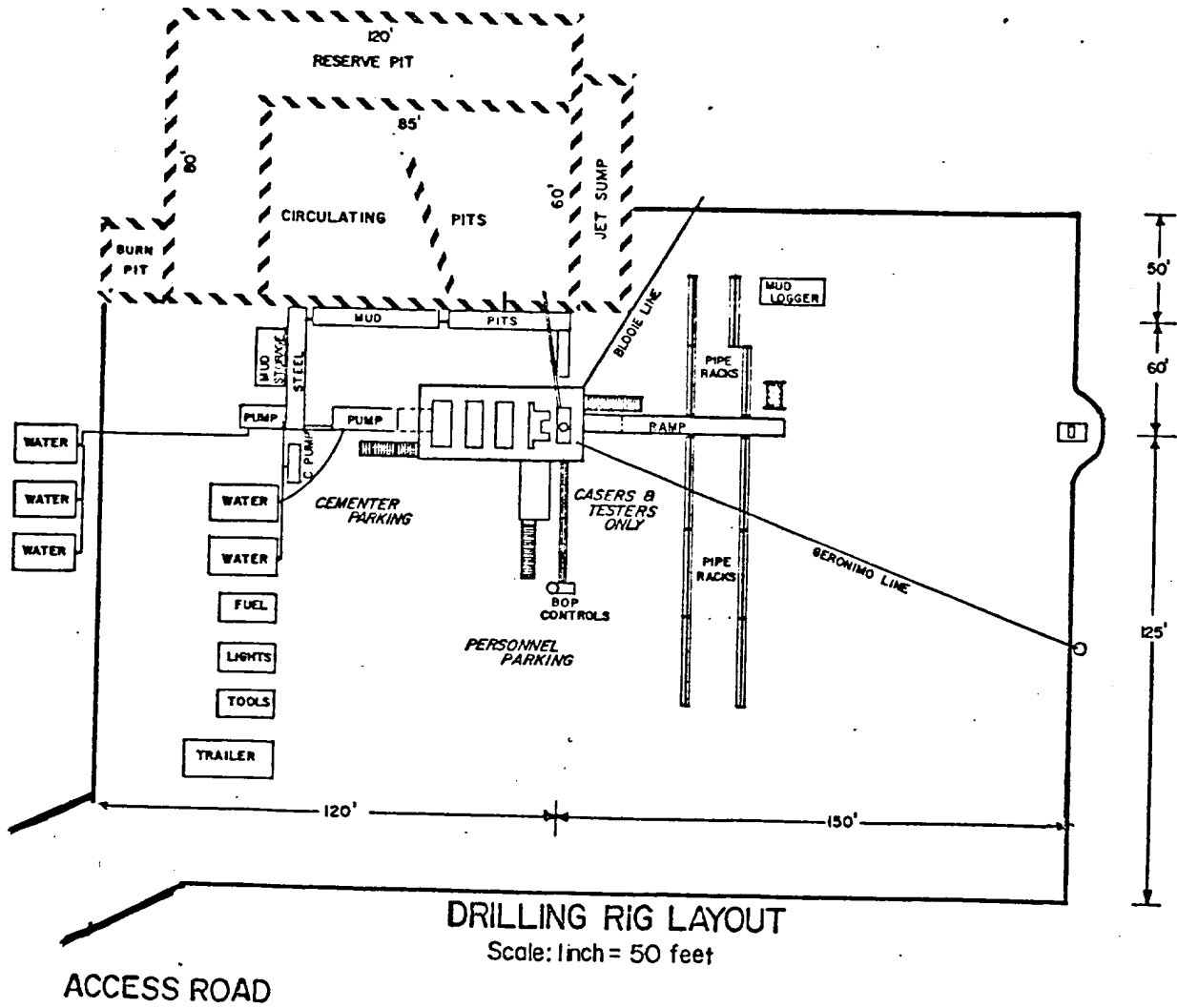


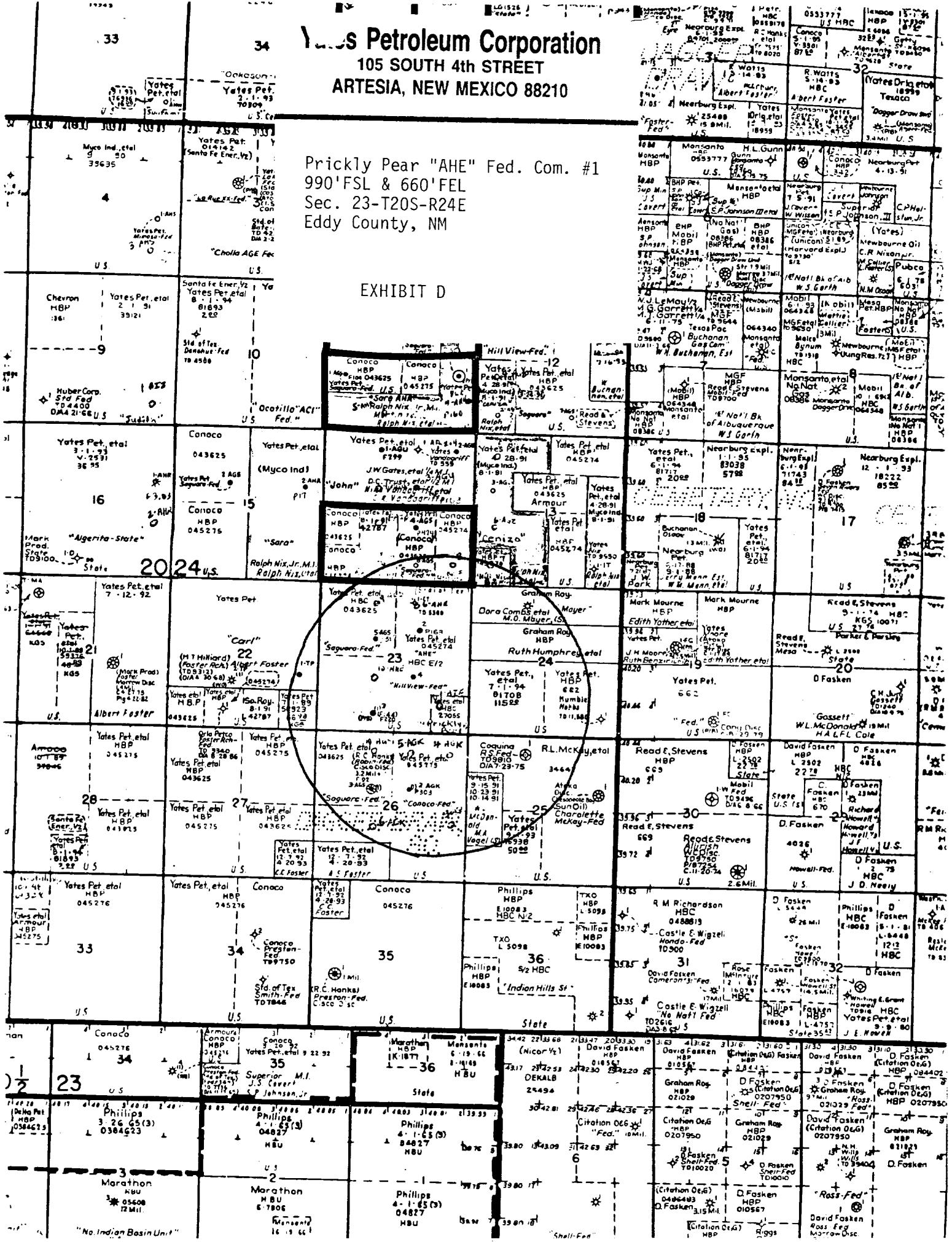
Exhibit C

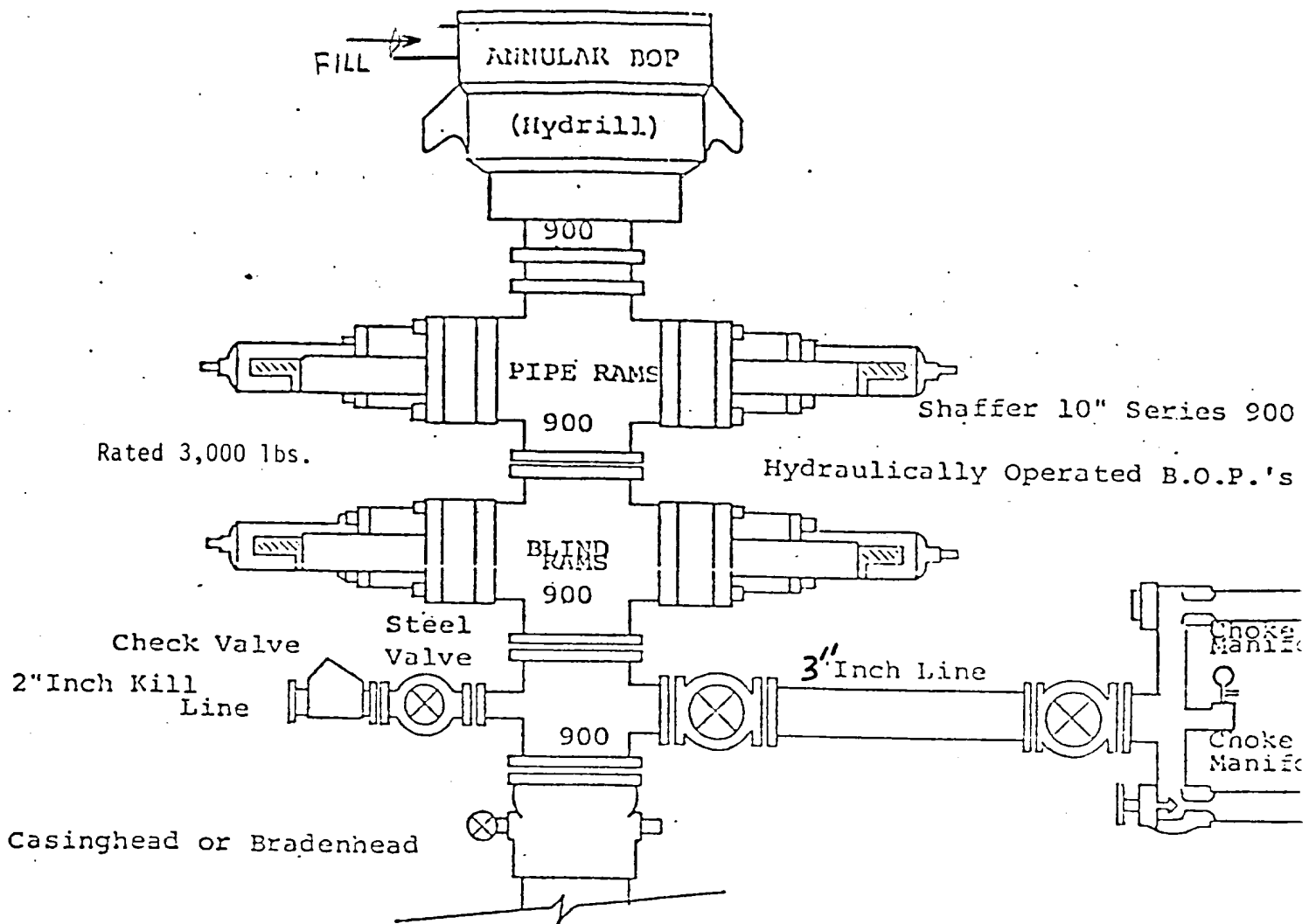
Yates Petroleum Corporation

105 SOUTH 4th STREET
ARTESIA, NEW MEXICO 88210

Prickly Pear "AHE" Fed. Com. #1
990' FSL & 660' FEL
Sec. 23-T20S-R24E
Eddy County, NM

EXHIBIT D





THE FOLLOWING CONSTITUTE MINIMUM BLOWOUT PREVENTER REQUIREMENTS

1. All preventers to be hydraulically operated with secondary manual controls installed prior to drilling out from under casing.
2. Choke outlet to be a minimum of 3" diameter.
3. Kill line to be of all steel construction of 2" minimum diameter.
4. All connections from operating manifolds to preventers to be all steel. hole or tube a minimum of one inch in diameter.
5. The available closing pressure shall be at least 15% in excess of that required with sufficient volume to operate the B.O.P.'s.
6. All connections to and from preventer to have a pressure rating equivalent to that of the B.O.P.'s.
7. Inside blowout preventer to be available on rig floor.
8. Operating controls located a safe distance from the rig floor.
9. Hole must be kept filled on trips below intermediate casing.

EXHIBIT
B