

State of New Mexico
Energy, Minerals and Natural Resources Department

Form C-101
Revised 1-1-89
CLSF
BLM
S
OP

Submit to Appropriate District Office
State Lease - 6 copies
Fee Lease - 5 copies

OIL CONSERVATION DIVISION
P.O. Box 2088
Santa Fe, New Mexico 87504-2088
RECEIVED

DISTRICT I
P.O. Box 1980, Hobbs, NM 88240

DISTRICT II
P.O. Drawer DD, Artesia, NM 88210

DISTRICT III
1000 Rio Brazos Rd., Aztec, NM 87410

API NO. (assigned by OCD on New Wells)
30-015-27299

5. Indicate Type of Lease
STATE FEE

6. State Oil & Gas Lease No.
648

FEB 01 1993

APPLICATION FOR PERMIT TO DRILL, DEEPEN, OR PLUG BACK

1a. Type of Work:
DRILL RE-ENTER DEEPEN PLUG BACK

b. Type of Well:
OIL WELL GAS WELL OTHER
SINGLE ZONE MULTIPLE ZONE

7. Lease Name or Unit Agreement Name
East Millman

2. Name of Operator
SDX RESOURCES, INC. ✓

8. Well No.
193

3. Address of Operator
P.O. BOX 5061 Midland, TX. 79704-5061

9. Pool name or Wildcat
E. Millman Q-G-SA

4. Well Location
Unit Letter M : 51 Feet From The West Line and 1294 Feet From The South Line
Section 14 Township 19-S Range 28-E NMPM Eddy County

10. Proposed Depth 2600
11. Formation Grayburg
12. Rotary or C.T. Rot

13. Elevations (Show whether DF, RT, GR, etc.) 3446 GR
14. Kind & Status Plug. Bond Blanket
15. Drilling Contractor Capstar
16. Approx. Date Work will start Feb. 01

17. PROPOSED CASING AND CEMENT PROGRAM					
SIZE OF HOLE	SIZE OF CASING	WEIGHT PER FOOT	SETTING DEPTH	SACKS OF CEMENT	EST. TOP
12-1/4"	8-5/8"	24#	350' +	300	surf
7-7/8"	5-1/2"	15.50#	2600'	500	surf

Plan to drill a 12-1/4" hole to approx. 350'; set 8-5/8" surface casing. Circulate "C" cement. Drill 7-7/8" hole to TD. Run open hole logs (LDT-CNL-GR & DLL). Run 5-1/2" casing and circulate 50/50 POZ "C" cement. Perforate the Grayburg-Queen and stimulate as necessary for optimum production.

POST 10-1
2-5-93
NEW LOG & API

Mud Program: Fresh water mud 0'-350'
Salt water mud 350'-TD.

APPROVAL VALID FOR 180 DAYS
PERMIT EXPIRES 3-3-93
UNLESS DRILLING UNDERWAY

IN ABOVE SPACE DESCRIBE PROPOSED PROGRAM: IF PROPOSAL IS TO DEEPEN OR PLUG BACK, GIVE DATA ON PRESENT PRODUCTIVE ZONE AND PROPOSED NEW PRODUCTIVE ZONE. GIVE BLOWOUT PREVENTER PROGRAM, IF ANY.

I hereby certify that the information above is true and complete to the best of my knowledge and belief.

SIGNATURE Chuck Morgan TITLE Engr. DATE 1/29/93
TYPE OR PRINT NAME Chuck Morgan TELEPHONE NO. 744-9814

(This space for State Use)

APPROVED BY Mark Bell TITLE Biologist DATE 2-3-93

CONDITIONS OF APPROVAL, IF ANY:

Submit to Appropriate District Office
 State Lease - 4 copies
 Fee Lease - 3 copies

State of New Mexico
 Energy, Minerals and Natural Resources Department

Form C-102
 Revised 1-1-89

OIL CONSERVATION DIVISION

DISTRICT I
 P.O. Box 1980, Hobbs, NM 88240

P.O. Box 2088
 Santa Fe, New Mexico 87504-2088

DISTRICT II
 P.O. Drawer DD, Artesia, NM 88210

DISTRICT III
 1000 Rio Brazos Rd., Aztec, NM 87410

WELL LOCATION AND ACREAGE DEDICATION PLAT

All Distances must be from the outer boundaries of the section

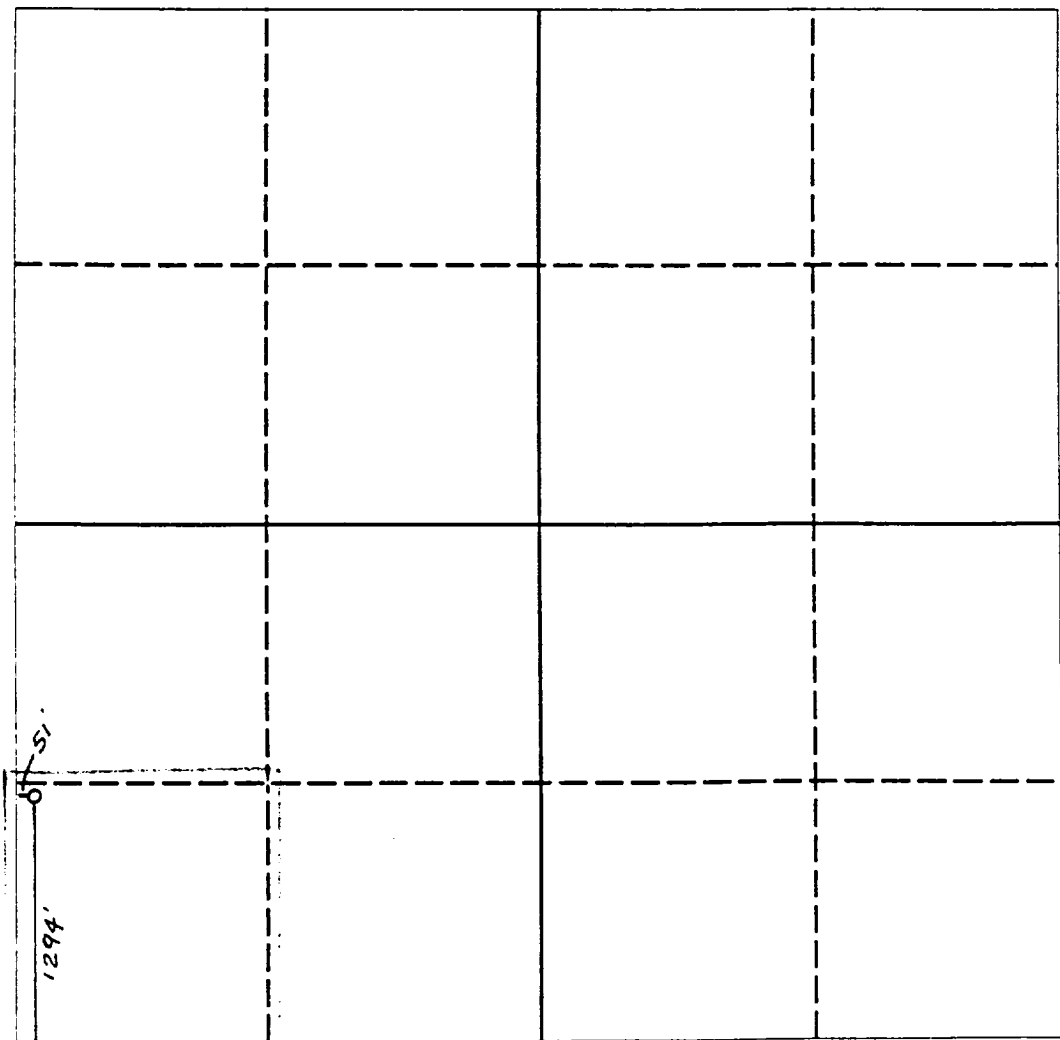
Operator SDX RESOURCES, INC.			Lease EAST MILLMAN UNIT		Well No. 193
Unit Letter M	Section 14	Township 19 SOUTH	Range 28 EAST	County EDDY COUNTY, NM	
Actual Footage Location of Well: 1294 feet from the SOUTH line and 51 feet from the WEST line					
Ground level Elev. 3446.	Producing Formation Q.-G.B.	Pool East Millman Q.-G.S.A.	Dedicated Acreage: 40 Acres		

- Outline the acreage dedicated to the subject well by colored pencil or hachure marks on the plat below.
- If more than one lease is dedicated to the well, outline each and identify the ownership thereof (both as to working interest and royalty).
- If more than one lease of different ownership is dedicated to the well, have the interest of all owners been consolidated by communitization, unitization, force-pooling, etc.?

Yes No If answer is "yes" type of consolidation _____

If answer is "no" list the owners and tract descriptions which have actually been consolidated. (Use reverse side of this form if necessary.) _____

No allowable will be assigned to the well until all interests have been consolidated (by communitization, unitization, forced-pooling, or otherwise) or until a non-standard unit, eliminating such interest, has been approved by the Division.



OPERATOR CERTIFICATION

I hereby certify that the information contained herein is true and complete to the best of my knowledge and belief.

Signature: *Chuck Morgan*

Printed Name: **Chuck Morgan**

Position: **Engr.**

Company: **SDX Resources**

Date: **1/29/93**

SURVEYOR CERTIFICATION

I hereby certify that the well location shown on this plat was plotted from field notes of actual surveys made by me or under my supervision, and that the same is true and correct to the best of my knowledge and belief.

Date Surveyed: **JANUARY 27 1993**

Signature & Title of Professional Surveyor: *Ray*

Certificate No. **5412**

NEW MEXICO REGISTERED PROFESSIONAL ENGINEER

NEW MEXICO PROFESSIONAL ENGINEER

