

DISTRICT I
P.O. Box 1960, Hobbs, NM 88241-1980

DISTRICT II
P.O. Drawer DD, Artesia, NM 88211-0719

DISTRICT III
1000 Rio Brazos Rd., Aztec, NM 87410

DISTRICT IV
P.O. BOX 2088, SANTA FE, N.M. 87504-2088

State of New Mexico
Energy, Minerals and Natural Resources Department

Form C-102
Revised February 10, 1994
Submit to Appropriate District Office
State Lease - 4 Copies
Fee Lease - 3 Copies

OIL CONSERVATION DIVISION

P.O. Box 2088
Santa Fe, New Mexico 87504-2088

☐ AMENDED REPORT

WELL LOCATION AND ACREAGE DEDICATION PLAT

API Number 30-015-29043	Pool Code 46555	Pool Name MILLMAN; QU-GB-SA, EAST
Property Code 017925	Property Name MILLMAN 11 STATE	Well Number 3
OGRID No. 014007	Operator Name MARALO, INC.	Elevation 3437

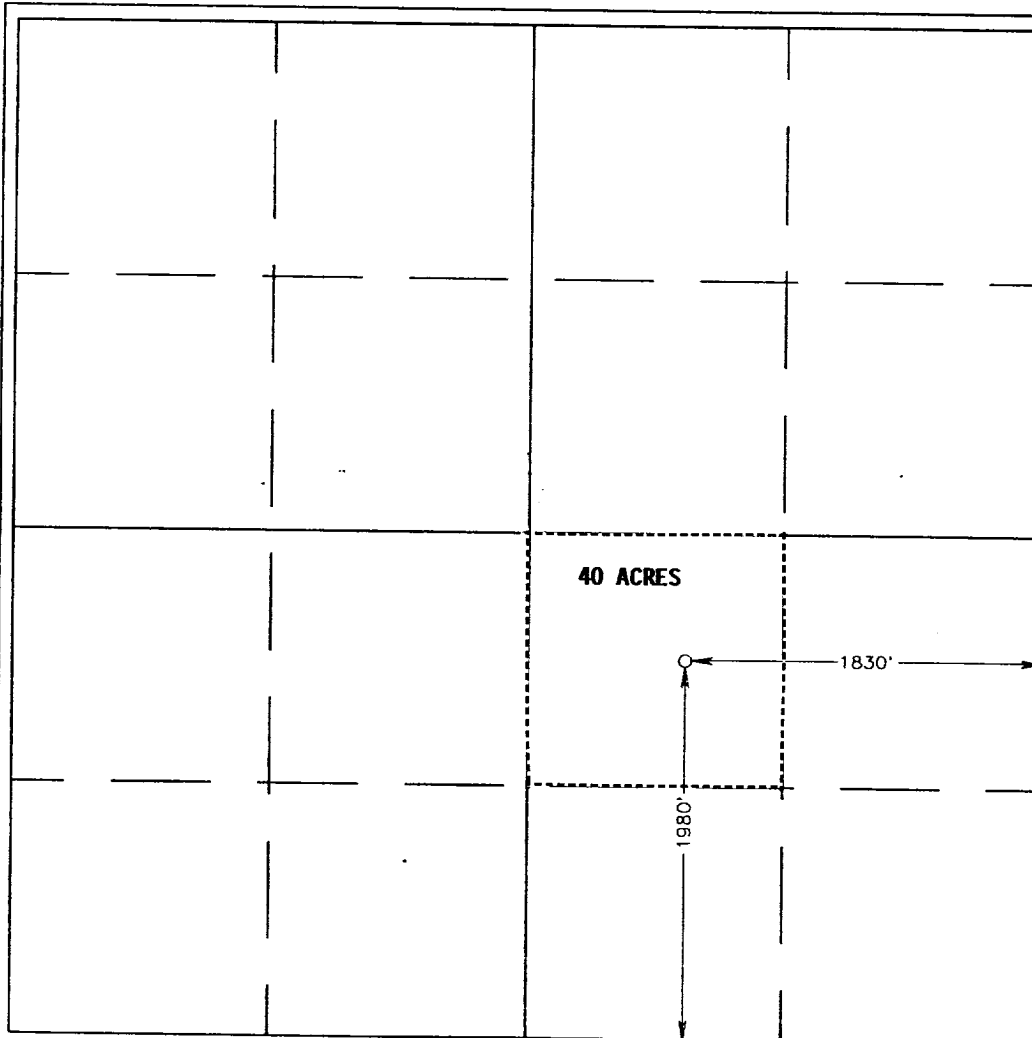
Surface Location

UL or lot No. J	Section 11	Township 19 S	Range 28 E	Lot Idn	Feet from the 1980	North/South line SOUTH	Feet from the 1830	East/West line EAST	County EDDY
---------------------------	----------------------	-------------------------	----------------------	---------	------------------------------	----------------------------------	------------------------------	-------------------------------	-----------------------

Bottom Hole Location If Different From Surface

UL or lot No.	Section	Township	Range	Lot Idn	Feet from the	North/South line	Feet from the	East/West line	County
Dedicated Acres 40	Joint or Infill	Consolidation Code	Order No.						

NO ALLOWABLE WILL BE ASSIGNED TO THIS COMPLETION UNTIL ALL INTERESTS HAVE BEEN CONSOLIDATED
OR A NON-STANDARD UNIT HAS BEEN APPROVED BY THE DIVISION



OPERATOR CERTIFICATION	
I hereby certify the the information contained herein is true and complete to the best of my knowledge and belief.	
<i>Dorothea Logan</i> Signature	
DOROTHEA LOGAN Printed Name	
REGULATORY ANALYST Title	
JULY 17, 1996 Date	
SURVEYOR CERTIFICATION	
I hereby certify that the well location shown on this plat was plotted from field notes of actual surveys made by me or under my supervision, and that the same is true and correct to the best of my belief.	
JULY 3, 1996 Date Surveyed	
<i>Donald J. Eidson</i> Signature & Seal of Professional Surveyor	
CDG	
96-11-0808 Certificate No.	
JOHN W. WEST Professional Surveyor	
676 3239 12641	