

MEXICO OIL CONSERVATION COMMISS
WELL LOCATION AND ACREAGE DEDICATION PLAT

Form C-102
 Supersedes C-128
 Effective 1-1-65

All distances must be from the outer boundaries of the Section

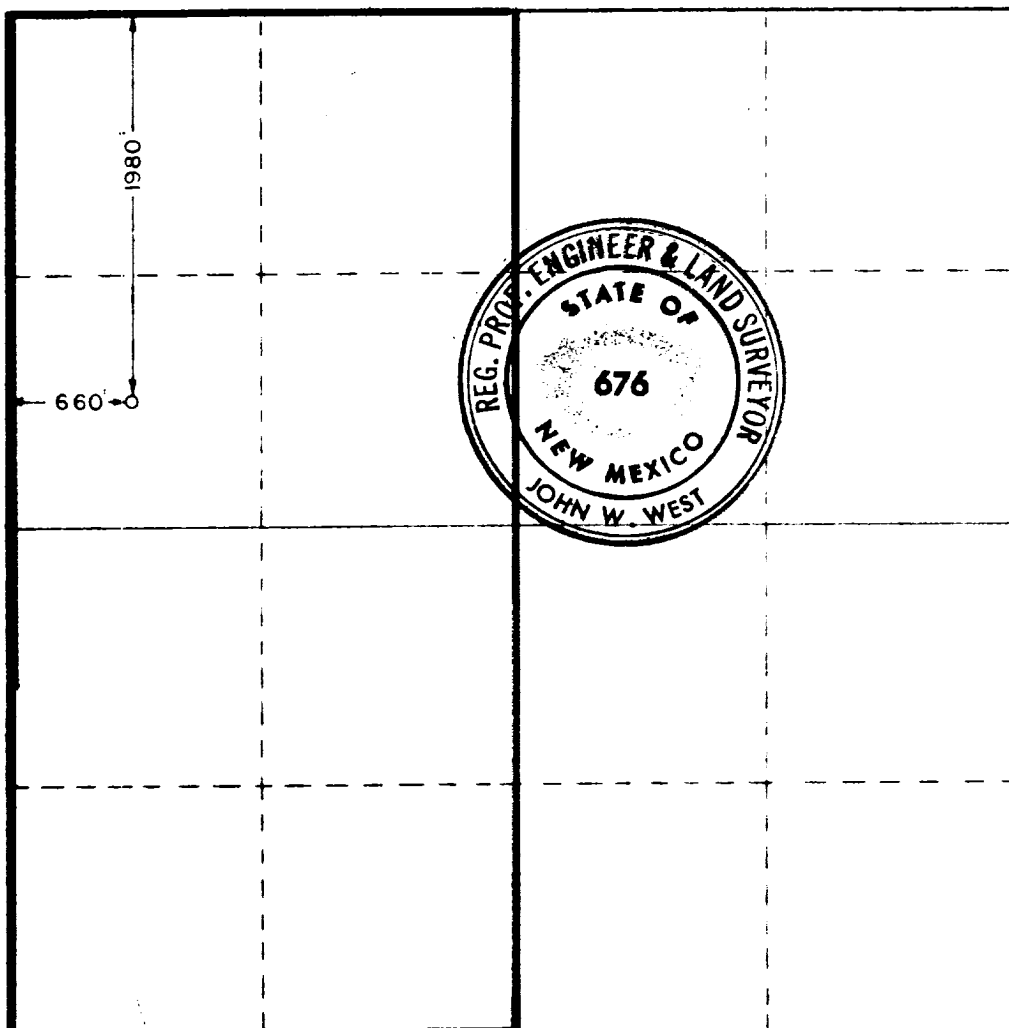
Operator TEXAS OIL & GAS CORP.			Lease YATES FEDERAL		Well No. 3
Unit Letter E	Section 17	Township 20 SOUTH	Range 29 EAST	County EDDY	
Actual Footage Location of Well:					
1980 feet from the NORTH line and		660 feet from the WEST line			
Ground Level Elev. 3280.0	Producing Formation Morrow	Pool Wildcat	Dedicated Acreage: 320 Acres		

1. Outline the acreage dedicated to the subject well by colored pencil or hatchure marks on the plat below.
2. If more than one lease is dedicated to the well, outline each and identify the ownership thereof (both as to working interest and royalty).
3. If more than one lease of different ownership is dedicated to the well, have the interests of all owners been consolidated by communitization, unitization, force-pooling, etc?

☐ Yes ☐ No If answer is "yes," type of consolidation _____

If answer is "no," list the owners and tract descriptions which have actually been consolidated. (Use reverse side of this form if necessary.) _____

No allowable will be assigned to the well until all interests have been consolidated (by communitization, unitization, forced-pooling, or otherwise) or until a non-standard unit, eliminating such interests, has been approved by the Commission.



CERTIFICATION

I hereby certify that the information contained herein is true and complete to the best of my knowledge and belief.

Name **J. R. Colter**
 Position **Petroleum Engineer**
 Company **Texas Oil & Gas Corp.**
 Date **September 17, 1973**

I hereby certify that the well location shown on this plat was plotted from field notes and is true to the best of my knowledge and belief.

RECEIVED
SEP 18 1973
U. S. GEOLOGICAL SURVEY
ARTESIA, NEW MEXICO

Date Surveyed
SEPTEMBER 14, 1973
 Registered Professional Engineer
 and/or Land Surveyor

John W. West
 Certificate No. **676**

