

MEXICO OIL CONSERVATION COMMISSION  
 WELL LOCATION AND ACREAGE DEDICATION PLAT

Form 1-77  
 Supersedes 6-128  
 1-1-77

All distances must be from the outer boundaries of the Section

Operator <b>Morris R. Antweil</b>		Lease <b>Mesa Fuerte</b>		Area <b>1</b>	
Section <b>J</b>	Section <b>33</b>	Range <b>21 South</b>	Range <b>26 East</b>	County <b>Eddy County, New Mexico</b>	
Actual Footage Location of Well:					
<b>1833</b> feet from the <b>South</b>		<b>1980</b> feet from the <b>East</b>			
Ground Level Elev. <b>3238.57</b>	Finishing Stratum <b>Strawn</b>	Flow <i>Weak</i> <b>Undesignated</b>	Test Water Flow <b>320</b>		

1. Outline the acreage dedicated to the subject well by colored pencil or hatchure marks on the plat below.
2. If more than one lease is dedicated to the well, outline each and identify the ownership thereof (both as to working interest and royalty). **See reverse side.**
3. If more than one lease of different ownership is dedicated to the well, have the interests of all owners been consolidated by communitization, unitization, force-pooling, etc?

**RECEIVED**

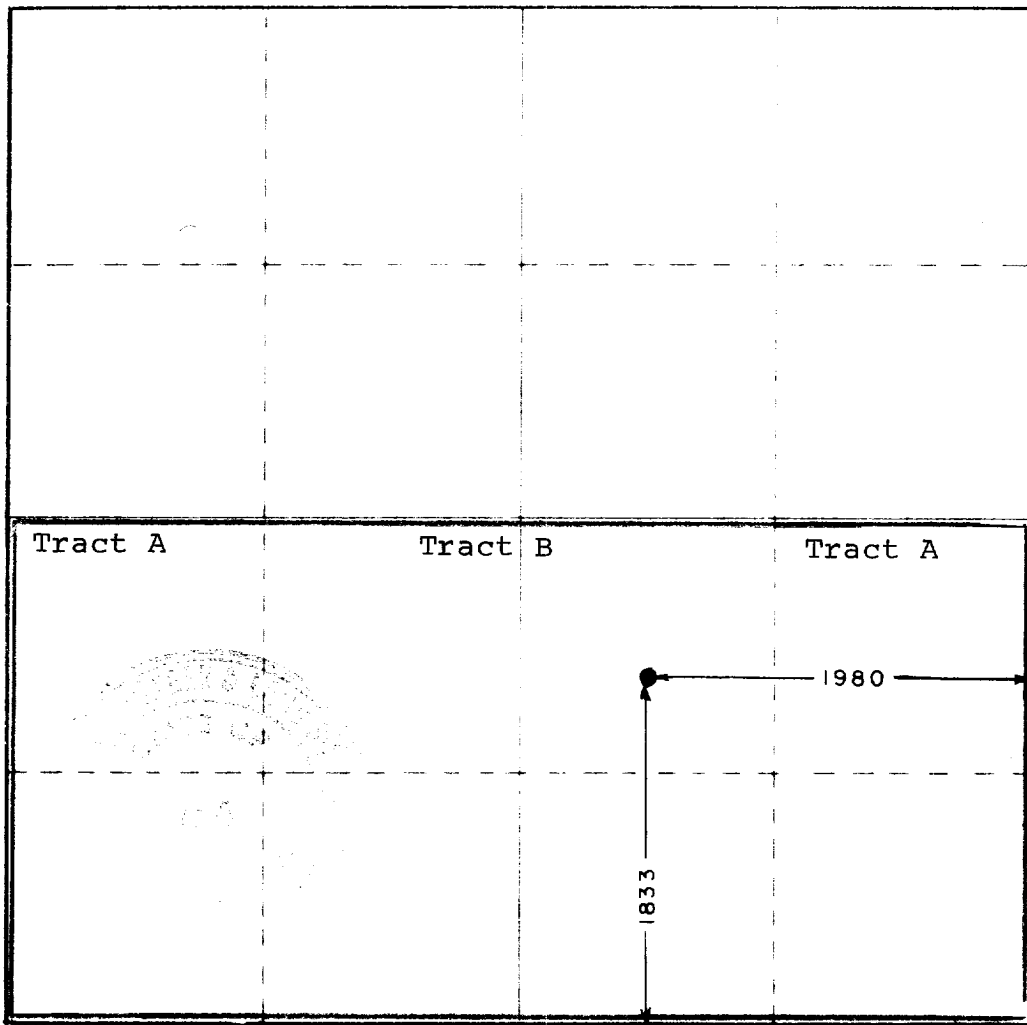
**AUG 4 1977**

**O. C. C.**  
**ARTESIA, OFFICE**

Yes  No If answer is "yes," type of consolidation Communitization

If answer is "no," list the owners and tract descriptions which have actually been consolidated. (Use reverse side of this form if necessary.) \_\_\_\_\_

No allowable will be assigned to the well until all interests have been consolidated (by communitization, unitization, forced-pooling, or otherwise) or until a non-standard unit, eliminating such interests, has been approved by the Commission.



CERTIFICATION

I hereby certify that the information contained herein is true and complete to the best of my knowledge and belief.

*R. M. Williams*

Name  
**R. M. Williams**

Position  
**Agent**

Operator  
**Morris R. Antweil**

Date  
**3 August, 1977**

I hereby certify that the well location shown on this plat was plotted from field notes of actual surveys made by me or under my supervision, and that the same is true and correct to the best of my knowledge and belief.

**October 13, 1976**

Date Surveyed

Registered Professional Engineer and Land Surveyor

*John W. West*  
 Certificate No. **676**

Working Interest Ownership

Tract A - State Lease No. 13-3378

7/2 SW/4 & 1/2 NE/4

Antroil & Wesa - 100%

Superior has reversionary W. I. after payment.

Tract B - Pool Leases (Undivided)

5/2 SW/4 & 1/2 NE/4

Antroil and Wesa - 100%