

N MEXICO OIL CONSERVATION COMMISS
WELL LOCATION AND ACREAGE DEDICATION PLAT

Form C-102
Supersedes C-128
Effective 1-1-65

All distances must be from the outer boundaries of the Section.

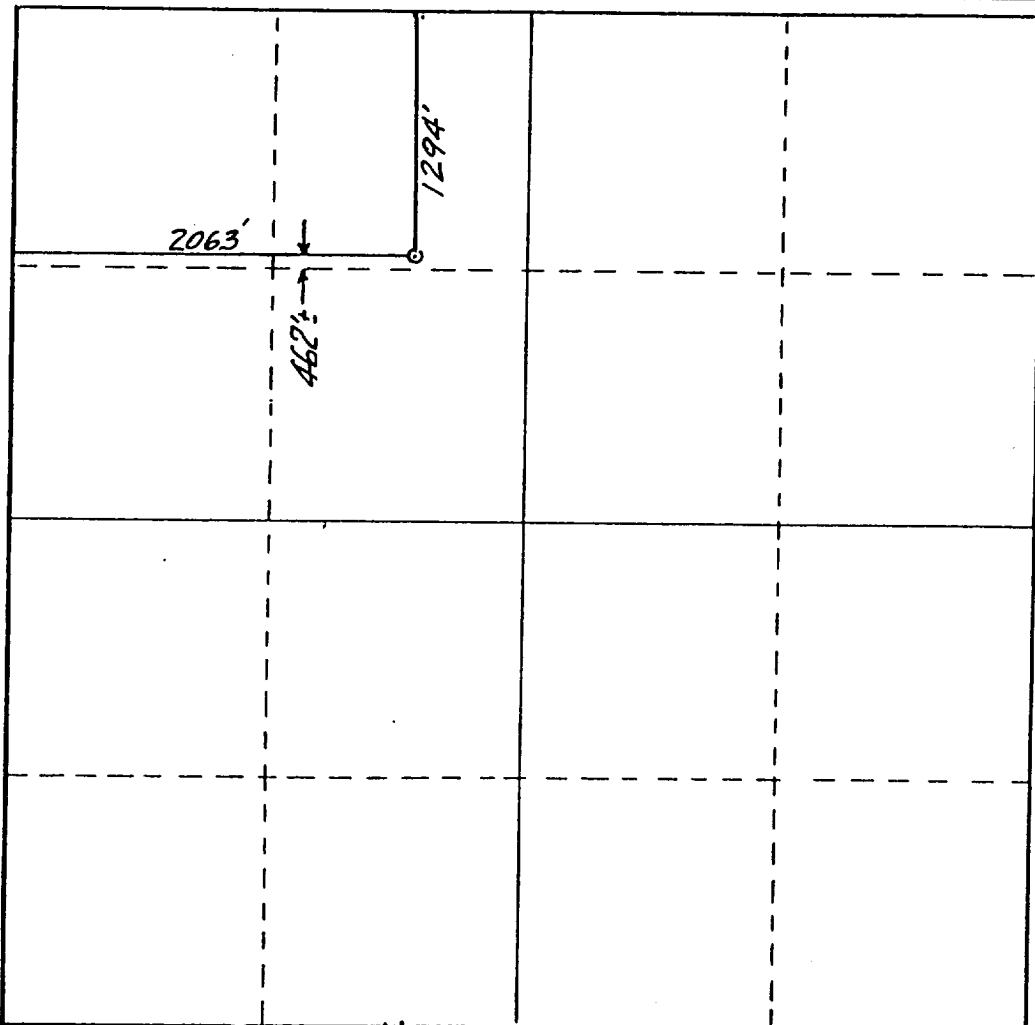
Operator Steve Sell		Lease Bandaid Federal			Well No. 1
Unit Letter C	Section 5	Township 22 South	Range 24 East	County Eddy County, N.M.	
Actual Footage Location of Well: 1294 feet from the North line and 2063 feet from the West line					
Ground Level Elev. 4206.	Producing Formation Cisco Reef	Pool Indian Basin <i>u/PE&S</i>		Dedicated Acreage: 692.88 Acres	

1. Outline the acreage dedicated to the subject well by colored pencil or hachure marks on the plat below.
2. If more than one lease is dedicated to the well, outline each and identify the ownership thereof (both as to working interest and royalty).
3. If more than one lease of different ownership is dedicated to the well, have the interests of all owners been consolidated by communitization, unitization, force-pooling, etc? N/A

Yes No If answer is "yes," type of consolidation _____

If answer is "no," list the owners and tract descriptions which have actually been consolidated. (Use reverse side of this form if necessary.) _____

No allowable will be assigned to the well until all interests have been consolidated (by communitization, unitization, forced-pooling, or otherwise) or until a non-standard unit, eliminating such interests, has been approved by the Commission.



CERTIFICATION

I hereby certify that the information contained herein is true and complete to the best of my knowledge and belief.

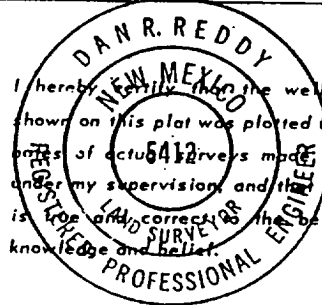
Kurt Boley

Name Kurt Boley

Position
Geologist

Company
Steve Sell

Date
March 8, 1989



I hereby certify that the well location shown on this plat was plotted from field notes of actual surveys made by me or under my supervision and that the same is true and correct to the best of my knowledge and belief.

Date Surveyed
March 7, 1989
Registered Professional Engineer
and/or Land Surveyor

Dan R. Reddy

Certificate No.
NM PE&LS NO. 5412

