

NM OIL CONS COMMISSION
UNITED STATES
DEPARTMENT OF THE INTERIOR
BUREAU OF LAND MANAGEMENT

SUBMIT IN TRIPLICATE
(Other instruct reverse side)

FORM APPROVED
OMB NO. 1004-0136
Expires: February 28, 1995

APPLICATION FOR PERMIT TO DRILL OR DEEPEN

1. TYPE OF WORK DRILL <input checked="" type="checkbox"/> DEEPEN <input type="checkbox"/>			5. LEASE DESIGNATION AND SERIAL NO. NM05608 <i>NM 04827-15</i>	
2. NAME OF OPERATOR Marathon Oil Company <i>14221</i>			6. IF INDIAN, ALLOTTEE OR TRIBE NAME 	
3. ADDRESS AND TELEPHONE NO. P.O. Box 552, Midland, TX 79702 915/682-1626			7. UNIT AGREEMENT NAME NORTH INDIAN BASIN	
4. LOCATION OF WELL (Report location clearly and in accordance with any State requirements.) At surface: 760' FNL & 760' FWL <i>UNORTHODOX LOCATION: Unit D</i> At proposed prod. zone: 760' FNL & 760' FWL <i>Unit D</i>			8. FARM OR LEASE NAME, WELL NO. NIBU <i>23 6411</i> 9. API WELL NO. 30-015-28578	
10. FIELD AND POOL, OR WILDCAT S. DAGGER DRAW/U.PENN <i>15475</i>			11. SEC., T., R., M., OR BLK. AND SURVEY OR AREA SEC. 2, T-21-S, R-23-E	
12. DISTANCE IN MILES AND DIRECTION FROM NEAREST TOWN OR POST OFFICE* 10 MILES WEST OF LAKEWOOD NEW MEXICO			12. COUNTY OR PARISH EDDY	
13. DISTANCE FROM PROPOSED* LOCATION TO NEAREST PROPERTY OR LEASE LINE, FT. (Also to nearest drlg. unit line, if any) 760'			13. STATE NM	
14. DISTANCE FROM PROPOSED* LOCATION TO NEAREST WELL, DRILLING, COMPLETED, OR APPLIED FOR, ON THIS LEASE, FT. 1622'			14. NO. OF ACRES IN LEASE 4160'	
15. ELEVATIONS (Show whether DF, RT, GR, etc.) 3741' GR			15. NO. OF ACRES ASSIGNED TO THIS WELL 320 - W/2	
16. DISTANCE FROM PROPOSED* LOCATION TO NEAREST WELL, DRILLING, COMPLETED, OR APPLIED FOR, ON THIS LEASE, FT. 1622'			16. PROPOSED DEPTH 8000'	
17. DISTANCE FROM PROPOSED* LOCATION TO NEAREST WELL, DRILLING, COMPLETED, OR APPLIED FOR, ON THIS LEASE, FT. 1622'			17. ROTARY OR CABLE TOOLS ROTARY	
18. DISTANCE FROM PROPOSED* LOCATION TO NEAREST WELL, DRILLING, COMPLETED, OR APPLIED FOR, ON THIS LEASE, FT. 1622'			18. APPROX. DATE WORK WILL START* 6-30-95	
19. DISTANCE FROM PROPOSED* LOCATION TO NEAREST WELL, DRILLING, COMPLETED, OR APPLIED FOR, ON THIS LEASE, FT. 1622'				

PROPOSED CASING AND CEMENTING PROGRAM

SIZE OF HOLE	GRADE, SIZE OF CASING	WEIGHT PER FOOT	SETTING DEPTH	QUANTITY OF CEMENT
17 1/2"	13 3/8"	48#	40'	CONDUCTOR-REDI MIX TO SURFACE
12 1/4"	9 5/8"	36#	1200'	800 - CIRCULATE
8 3/4"	7"	23#, 26#	8000'	1075-TOC @ +/- 1000'

SEE ATTACHED MULTIPOINT AND DRILLING PROGRAM FOR SPECIFIC DETAILS.

* DISTANCE TO NIBU #15 @ 1980' FNL & 1830' FWL

*Refer to
Requirements and
Stipulations
Attached*

RECEIVED

JUL 23 1995

OIL CON. DIV.
DRILLING

*Post ID-1
7-7-95
New Hor + APP*

IN ABOVE SPACE DESCRIBE PROPOSED PROGRAM: If proposal is to deepen, give data on present productive zone and proposed new productive zone. If proposal is to drill or deepen directionally, give pertinent data on subsurface locations and measured and true vertical depths. Give blowout prevention program, if any.

SIGNED *[Signature]* FOR D.P.W. TITLE DRILLING SUPERINTENDENT DATE 5-30-95

This space for Federal or State office use

PERMIT NO. _____ APPROVAL DATE _____

Application approval does not warrant or certify that the applicant holds legal or equitable title to these rights in the subject lease which would entitle the applicant to conduct operations thereon.

CONDITIONS OF APPROVAL, IF ANY:

APPROVED BY /s/ Yolanda Vega TITLE ASSISTANT AREA MANAGER DATE 7-3-95

*See Instructions On Reverse Side

Title 18 U.S.C. Section 1001, makes it a crime for any person knowingly and willfully to make to any department or agency of the United States any false,

DISTRICT I
P.O. Box 1980, Hobbs, NM 88240

State of New Mexico
Energy, Minerals and Natural Resources Department

Form C-102
Revised February 10, 1994
Instruction on back
Submit to Appropriate District Office
State Lease - 4 Copies
Fee Lease - 3 Copies

DISTRICT II
P.O. Drawer DD, Artesia, NM 88210

DISTRICT III
1000 Rio Brazos Rd., Aztec, NM 87410

OIL CONSERVATION DIVISION

P.O. Box 2088
Santa Fe, New Mexico 87504-2088

☐ AMENDED REPORT

WELL LOCATION AND ACREAGE DEDICATION PLAT

API Number 30-015-28578	Pool Code 15475	Pool Name S. Dagger Draw (Upper Penn, Assoc)
Property Code 6411	Property Name NORTH INDIAN BASIN UNIT	Well Number 23
OGRID No.	Operator Name VARATHON OIL COMPANY	Elevation 3741

Surface Location

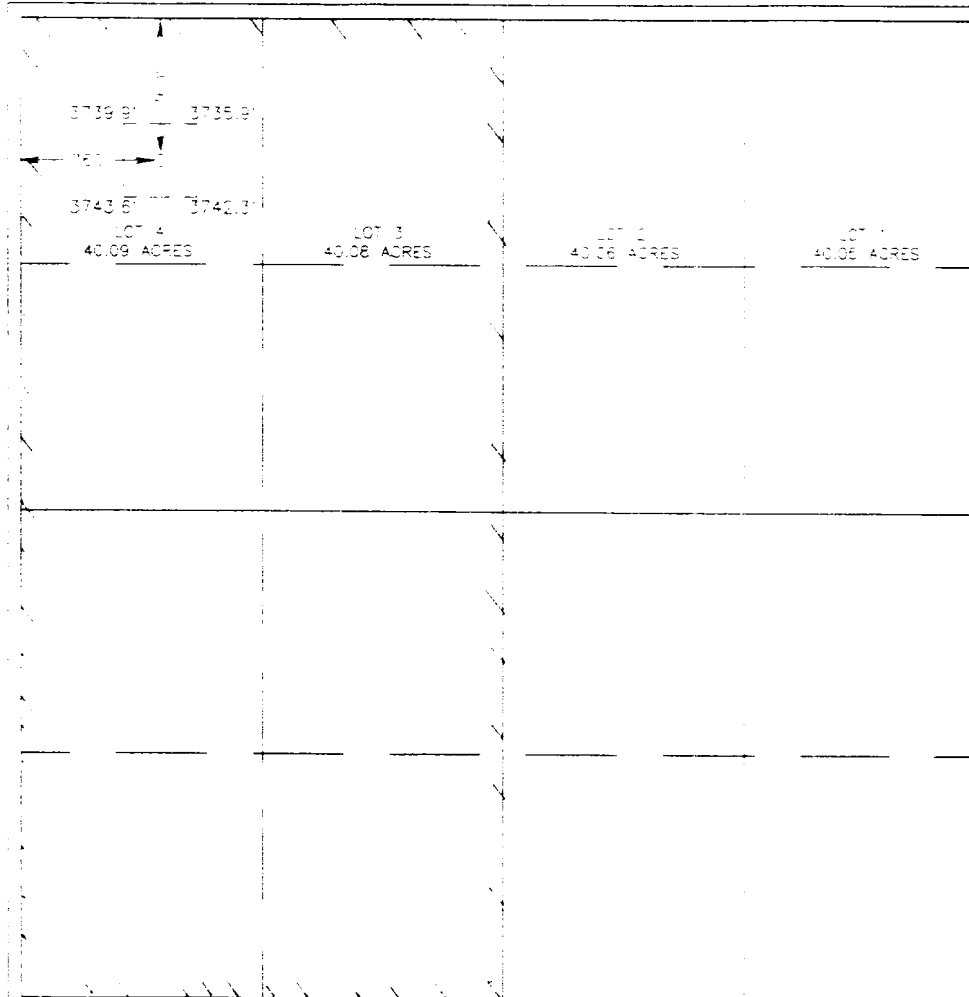
UL or lot No. LOT 4	Section 2	Township 21 S	Range 23 E	Lot Idn	Feet from the 760	North/South line NORTH	Feet from the 760	East/West line WEST	County EDD
-------------------------------	---------------------	-------------------------	----------------------	---------	-----------------------------	----------------------------------	-----------------------------	-------------------------------	----------------------

Bottom Hole Location if Different From Surface

UL or lot No.	Section	Township	Range	Lot Idn	Feet from the	North/South line	Feet from the	East/West line	County
---------------	---------	----------	-------	---------	---------------	------------------	---------------	----------------	--------

Dedicated Acres 320 - w/2	Joint or Infill	Consolidation Code	Order No.
-------------------------------------	-----------------	--------------------	-----------

NO ALLOWABLE WILL BE ASSIGNED TO THIS COMPLETION UNTIL ALL INTERESTS HAVE BEEN CONSOLIDATED
OR A NON-STANDARD UNIT HAS BEEN APPROVED BY THE DIVISION



OPERATOR CERTIFICATION

I hereby certify the the information
contained herein is true and complete to the
best of my knowledge and belief

D. P. Nordt
Signature
D. P. Nordt
Printed Name
Drilling Superintendent
Title
May 30, 1995
Date

SURVEYOR CERTIFICATION

I hereby certify that the well location shown
on this plat was plotted from field notes of
actual surveys made by me or under my
supervision and that the same is true and
correct to the best of my belief

JANUARY 18, 1995

Date Surveyed
Signature & Seal of
Professional Surveyor

Ronald J. Eidson
W.O. Num. 95-13-0585

Certificate No. JOHN W. WEST 679
RONALD J. EIDSON 1239
GARY EIDSON 1284

