

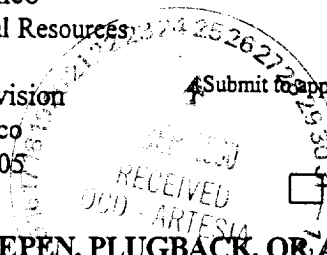
District I
1625 N. French Dr., Hobbs, NM 88240
District II
811 South First, Artesia, NM 88210
District III
1000 Rio Brazos Road, Aztec, NM 87410
District IV
2040 South Pacheco, Santa Fe, NM 87505

State of New Mexico
Energy Minerals and Natural Resources

Form C-101
Revised March 17, 1999

Oil Conservation Division
2040 South Pacheco
Santa Fe, NM 87505

Submit to appropriate District Office
State Lease - 6 Copies
Fee Lease - 5 Copies



AMENDED REPORT

*clerk
Bum
5/2
of*

APPLICATION FOR PERMIT TO DRILL, RE-ENTER, DEEPEN, PLUGBACK, OR ADD A ZONE

Operator Name and Address POGO PRODUCING COMPANY P.O. BOX 10340 MIDLAND, TEXAS 79702-7340		OGRIN Number 17891
Property Code 26401	Property Name LOST TANK "35" STATE	API Number 30-015-31361
		Well No. 1

Surface Location

UL or lot no.	Section	Township	Range	Lot Idn	Feet from the	North/South line	Feet from the	East/West line	County
P	35	21S	31E		660'	South	660'	East	EDDY

Proposed Bottom Hole Location If Different From Surface

UL or lot no.	Section	Township	Range	Lot Idn	Feet from the	North/South line	Feet from the	East/West line	County
Proposed Pool 1 LOST TANK-DELAWARE (40299)					Proposed Pool 2				

Work Type Code N	Well Type Code O	Cable/Rotary R	Lease Type Code S	Ground Level Elevation 3546'
Multiple NO	Proposed Depth 8500'	Formation DELAWARE	Contractor UNKNOWN	Spud Date WHEN APPROVED

Proposed Casing and Cement Program

Hole Size	Casing Size	Casing weight/foot	Setting Depth	Sacks of Cement	Estimated TOC
25"	20"	NA	40'	Redi-mix	Surface
17 1/2"	13 3/8"	54.5	800'	775 Sx	Surface
11"	8 5/8"	24 & 32	4200'	1400 Sx	Surface
7 7/8"	5 1/2"	15.5 & 17	8500'	1400 Sx.	Surface

²² Describe the proposed program. If this application is to DEEPEN or PLUG BACK, give the data on the present productive zone and proposed new productive zone. Describe the blowout prevention program, if any. Use additional sheets if necessary.

1. Drill 25" hole to 40'. Set 40' of 20" Conductor and cement to surface with Redi-mix.
2. Drill 17 1/2" hole to 800'. Run and set 800' of 13 3/8" 54.5# J-55 ST&C casing. Cement with 775 Sx of Class "C" cement + 2% CaCl, circulate cement to surface.
3. Drill 11" hole to 4200'. Run and set 4200' of 8 5/8" 32 & 24# J-55 ST&C casing. Cement with 1400 Sx. of Class "C" cement + additives, circulate to surface.
4. Drill 7 7/8" hole to 8500'. Run and set 8500' of 5 1/2" J-55 17 & 15.5# LT&C casing. Cement with 800 Sx. of Halco Light + additives, tail in with 600 Sx. of 50/50 POZ + additives, circulate cement to surface.

Minimum WOC time 24hrs.

Notify OCD at SPUD & TIME to witness cementing the 8 5/8" casing.

²³ I hereby certify that the information given above is true and complete to the best of my knowledge and belief.		OIL CONSERVATION DIVISION	
Signature: <i>Joe T. Janiga</i>		Approved by: ORIGINAL SIGNED BY TIM W. GUM	
Printed name: Joe T. Janiga		Title: DISTRICT II SUPERVISOR	
Title: Agent		Approval Date: SEP 29 2000	
Date: 09/22/00	Phone: 505-391-8503	Expiration Date: SEP 29 2001	
Conditions of Approval:		Attached <input type="checkbox"/>	

DISTRICT I
P.O. Box 1980, Hobbs, NM 88241-1980

State of New Mexico

Energy, Minerals and Natural Resources Department

Form C-102
Revised February 10, 1994
Submit to Appropriate District Office
State Lease - 4 Copies
Fee Lease - 3 Copies

DISTRICT II
P.O. Drawer DD, Artesia, NM 88211-0719

DISTRICT III
1000 Rio Brazos Rd., Aztec, NM 87410

DISTRICT IV
P.O. BOX 2088, SANTA FE, N.M. 87504-2088

OIL CONSERVATION DIVISION

P.O. Box 2088

Santa Fe, New Mexico 87504-2088

AMENDED REPORT

WELL LOCATION AND ACREAGE DEDICATION PLAT

API Number		Pool Code 40299	Pool Name LOST TANK - DELAWARE	
Property Code 26401	Property Name LOST TANK 35 STATE			Well Number 1
OGRID No. 17891	Operator Name POGO PRODUCING COMPANY			Elevation 3546

Surface Location

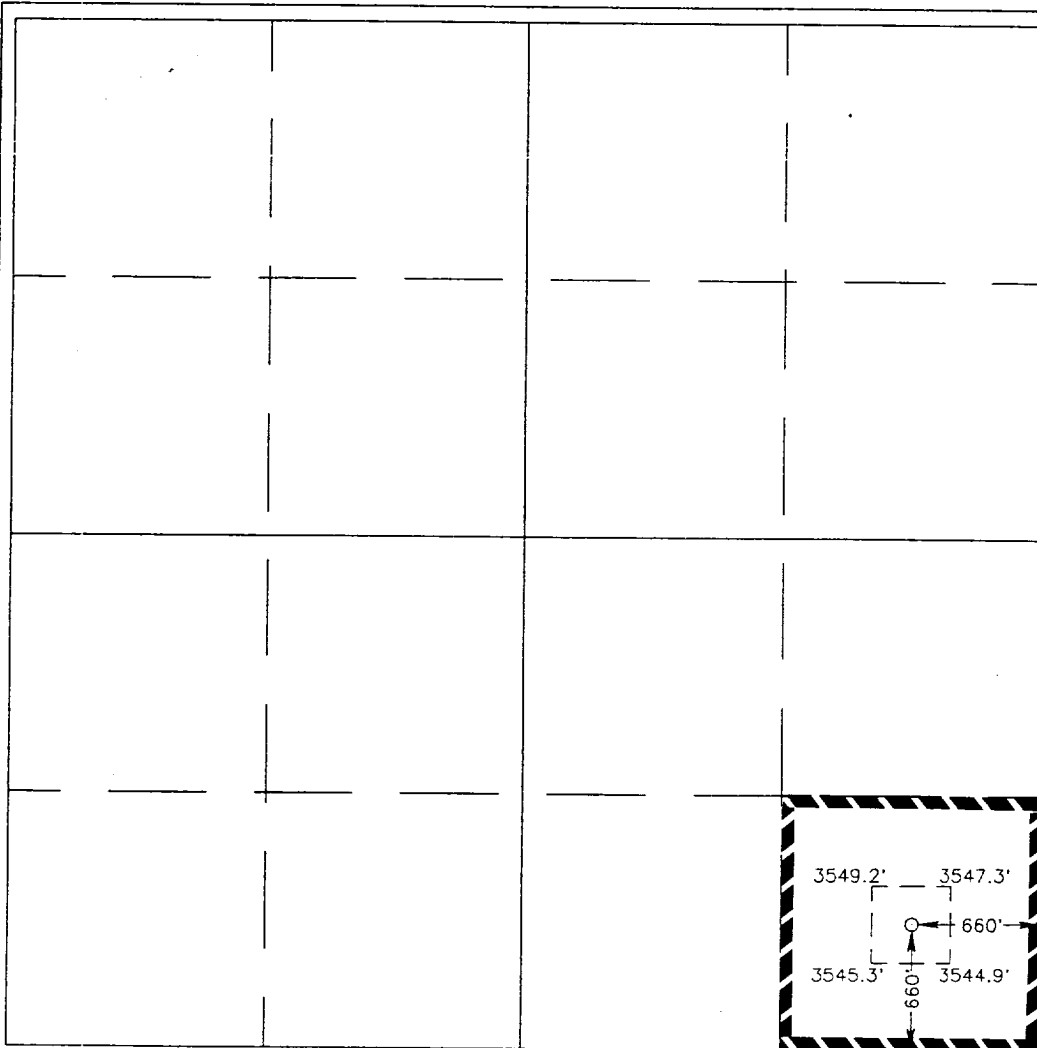
UL or lot No.	Section	Township	Range	Lot Idn	Feet from the	North/South line	Feet from the	East/West line	County
P	35	21 S	31 E		660	SOUTH	660	EAST	EDDY

Bottom Hole Location If Different From Surface

UL or lot No.	Section	Township	Range	Lot Idn	Feet from the	North/South line	Feet from the	East/West line	County

Dedicated Acres	Joint or Infill	Consolidation Code	Order No.
40			

NO ALLOWABLE WILL BE ASSIGNED TO THIS COMPLETION UNTIL ALL INTERESTS HAVE BEEN CONSOLIDATED OR A NON-STANDARD UNIT HAS BEEN APPROVED BY THE DIVISION



OPERATOR CERTIFICATION

I hereby certify the the information contained herein is true and complete to the best of my knowledge and belief.

Joe T. Janica
Signature

Joe T. Janica
Printed Name

Agent

Title

09/22/00
Date

SURVEYOR CERTIFICATION

I hereby certify that the well location shown on this plat was plotted from field notes of actual surveys made by me or under my supervision, and that the same is true and correct to the best of my belief.

MARCH 21, 1997
Date Surveyed

DMCC

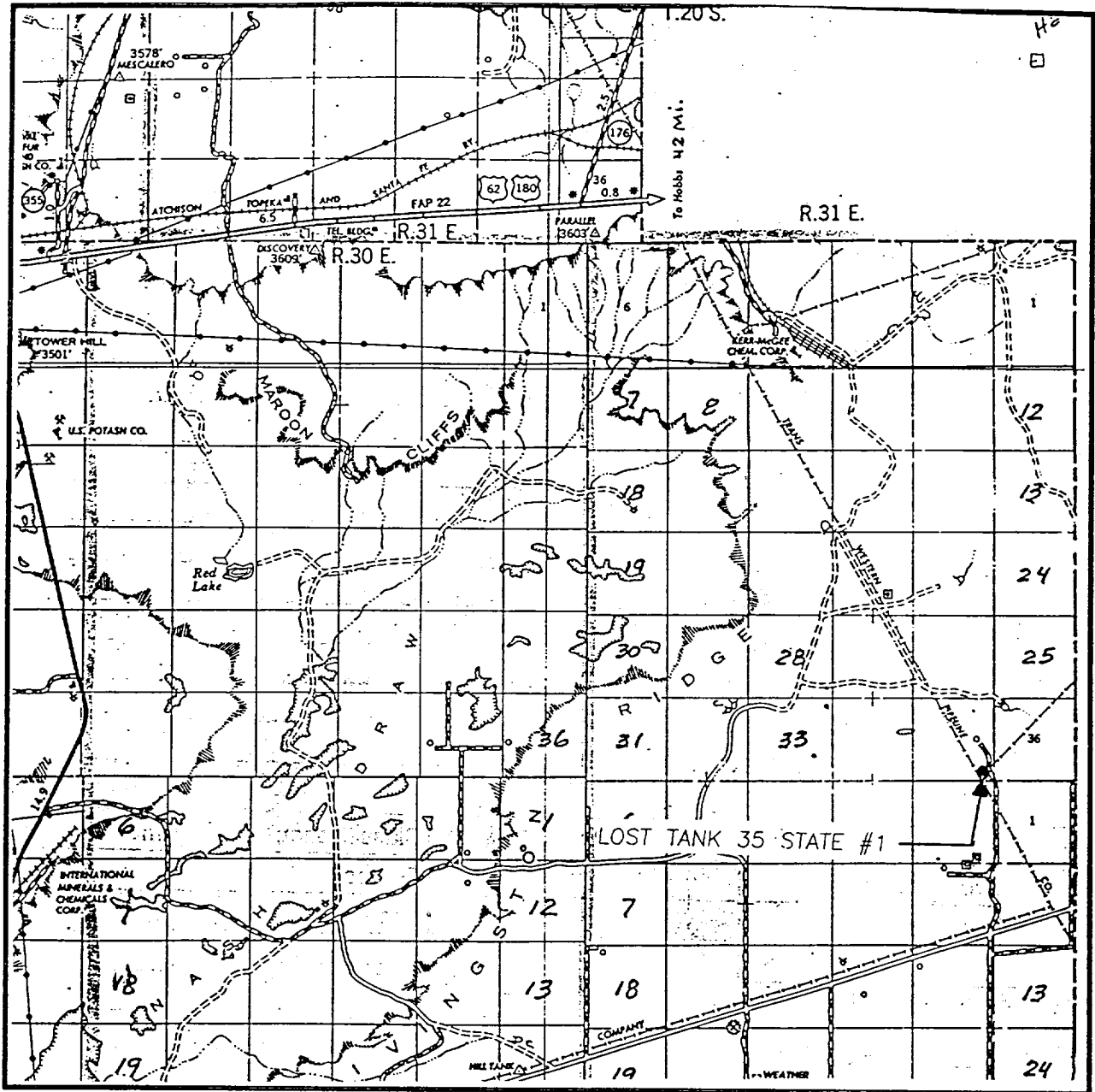
Signature & Seal of Professional Surveyor

Ronald J. Eidson
Professional Surveyor

3-24-97

Certificate No. JOHN W. WEST 676
RONALD J. EIDSON 3239
EIDSON 12641

VICINITY MAP



SCALE: 1" = 2 MILES

SEC. 35 TWP. 21-S RGE. 31-E

SURVEY _____ N.M.P.M.

COUNTY _____ EDDY

DESCRIPTION 660' FSL & 660' FEL

ELEVATION _____ 3546

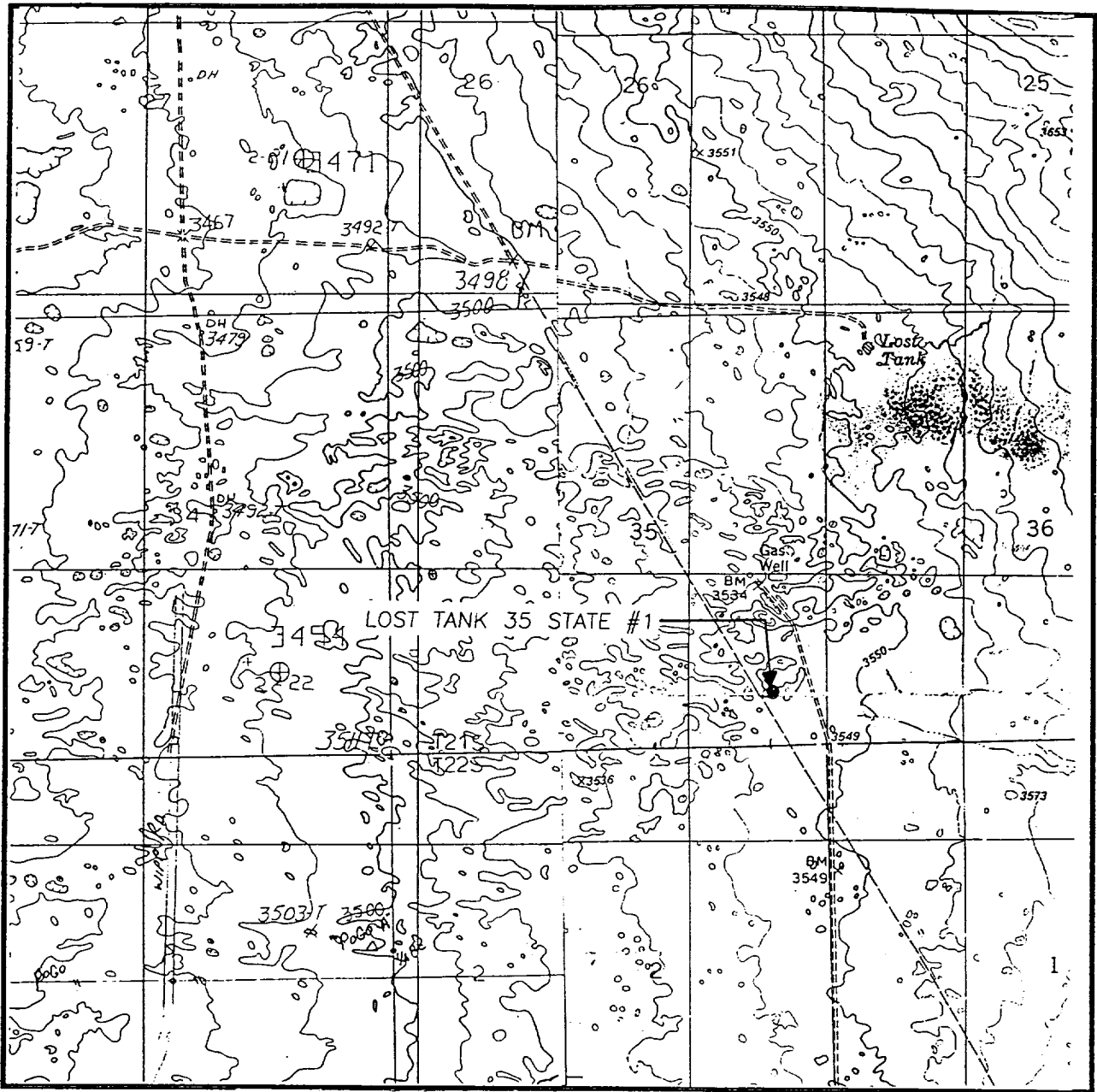
OPERATOR POGO PRODUCING COMPANY

LEASE _____ LOST TANK 35 STATE

**JOHN WEST ENGINEERING
HOBBS, NEW MEXICO**

(505) 393-3117

LOCATION VERIFICATION MAP



SCALE: 1" = 2000'

CONTOUR INTERVAL:
LIVINGSTON RIDGE - 10'
THE DIVIDE - 10'

SEC. 35 TWP. 21-S RGE. 31-E

SURVEY N.M.P.M.

COUNTY EDDY

DESCRIPTION 660' FSL & 660' FEL

ELEVATION 3546

OPERATOR POGO PRODUCING COMPANY

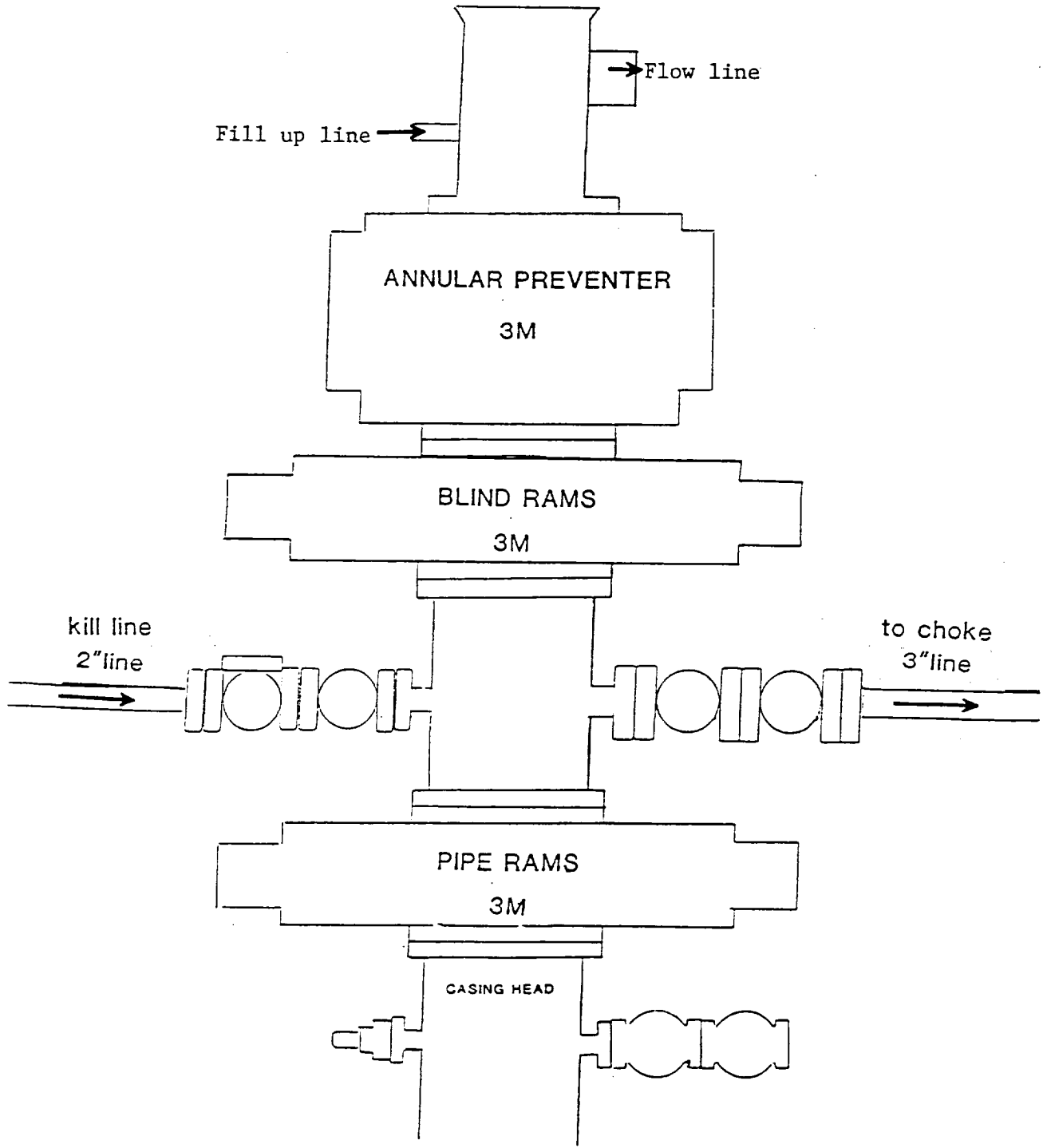
LEASE LOST TANK 35 STATE

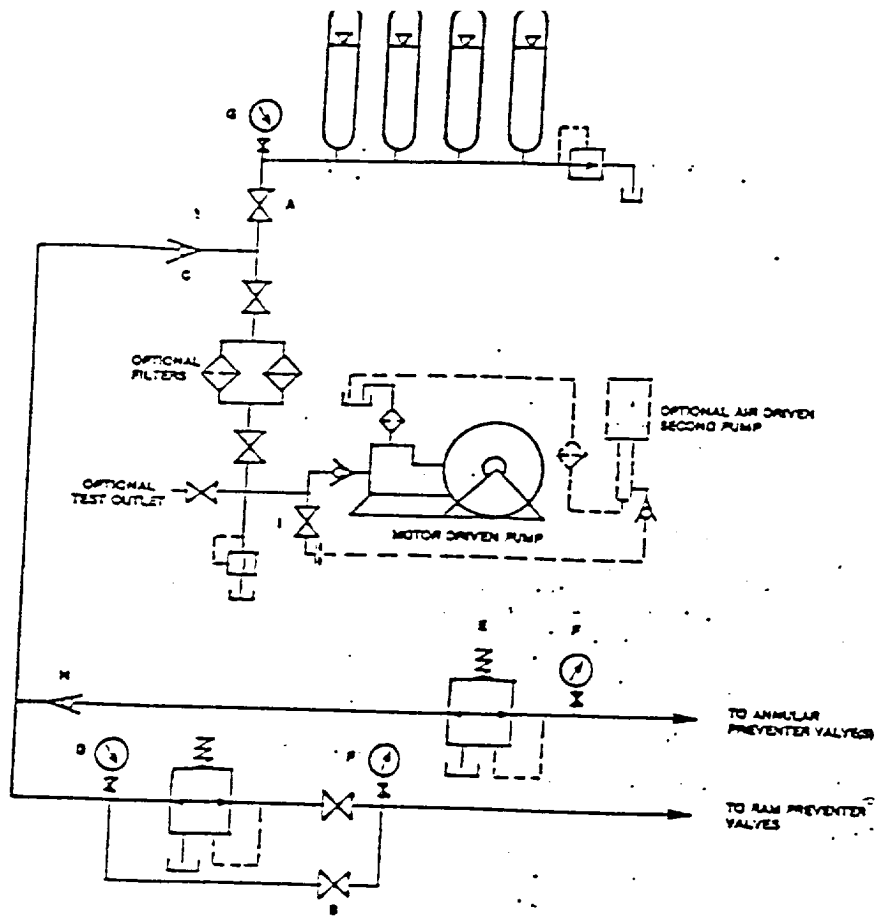
U.S.G.S. TOPOGRAPHIC MAP

LIVINGSTON RIDGE, THE DIVIDE, N.M.

**JOHN WEST ENGINEERING
HOBBS, NEW MEXICO**

(505) 393-3117





HAND ADJUSTABLE CHOKE

POGO PRODUCING CO
3M CHOKE MANIFOLD

