

1625 N. French Dr., Hobbs, NM 88240
District II
811 South First, Artesia, NM 88210
District III
1000 Rio Brazos Road, Aztec, NM 87410
District IV
2040 South Pacheco, Santa Fe, NM 87505

State of New Mexico
Energy Minerals and Natural Resources

Oil Conservation Division
2040 South Pacheco
Santa Fe, NM 87505

Form C-101
Revised March 17, 1999

Submit to appropriate District Office
State Lease - 6 Copies
Fee Lease - 5 Copies

☐ AMENDED REPORT

APPLICATION FOR PERMIT TO DRILL, RE-ENTER, DEEPEN, PLUGBACK, OR ADD A ZONE

Operator Name and Address CONCHO RESOURCES, INC. 110 WEST LOUISIANA SUITE 410 MIDLAND, TEXAS 79702		OGRID Number 166111
Property Code 28540	Property Name CANDLESTICK "15" STATE COM.	API Number 30-015-31924
		Well No. 1

Surface Location

UL or lot no.	Section	Township	Range	Lot Idn	Feet from the	North/South line	Feet from the	East/West line	County
P	15	22 S	26E		660'	SOUTH	660'	EAST	EDDY

Proposed Bottom Hole Location If Different From Surface

UL or lot no.	Section	Township	Range	Lot Idn	Feet from the	North/South line	Feet from the	East/West line	County

Proposed Pool 1
HAPPY VALLEY -MORROW (78060)

Proposed Pool 2

Work Type Code N	Well Type Code G	Cable/Rotary ROTARY	Lease Type Code S	Ground Level Elevation 3282'
Multipie NO	Proposed Depth 13,000'	Formation MORROW	Contractor Unknown	Spud Date When approved

Proposed Casing and Cement Program

Hole Size	Casing Size	Casing weight/foot	Setting Depth	Sacks of Cement	Estimated TOC
25"	20"	Conductor	40'	Redi-mix	Surface
17½"	13 3/8"	48	700'	700 Sx	Surface
12½"	9 5/8"	36 @ 2200	5100'	1400 Sx.	Surface
8 3/4"	5½"	17	13,000'	1050 Sx.	7000'

Describe the proposed program. If this application is to DEEPEN or PLUG BACK, give the data on the present productive zone and proposed new productive zone. Describe the blowout prevention program, if any. Use additional sheets if necessary.

1. Drill 25" hole to 40'. Set 40' of 29" conductor pipe and cement to surface with Redi-mix.
2. drill 17½" hole to 700'. Run and set 700' of 13 3/8" 48# H-40 ST&C casing. Cement with 700 Sx. of Class "C" cement + 2% CaCl + ½# Flocele/Sx. circulate cement to surface.
3. Drill 12½" hole to 5100'. Run and set 5100' of 9 5/8" 36# S-80 & J-55 ST&C casing. Cement with 1200 Sx. of Class "C" Light cement + additives, tail in with 200 Sx. of Class "C" + 2% CaCl, circulate cement to surface.
4. Drill 8 3/4" hole to 13,000'. Run and set 13,000' of 5½" 17# S-95 & N-80 LT&C casing. Cement with 550 Sx. of Class "H" Light cement + additives, tail in with 500 Sx. of Class "H" Premium Plus cement + additives, estimate top of cement 7000'.

I hereby certify that the information given above is true and complete to the best of my knowledge and belief.

Signature: *Joe T. Janica*
Printed name: Joe T. Janica
Title: Agent

Date: 07/05/01
Phone: 505-391-8503

OIL CONSERVATION DIVISION

Approved by:

ORIGINAL SIGNED BY TIM W. GUM
DISTRICT II SUPERVISOR

Title:

Approval Date:

JUL 27 2001

Expiration Date:

JUL 27 2002

Conditions of Approval:

DISTRICT I
P.O. Box 1980, Hobbs, NM 88241-1980

DISTRICT II
P.O. Drawer DD, Artesia, NM 88211-0719

DISTRICT III
1000 Rio Brazos Rd., Aztec, NM 87410

DISTRICT IV
P.O. BOX 2088, SANTA FE, N.M. 87504-2088

State of New Mexico
Energy, Minerals and Natural Resources Department

OIL CONSERVATION DIVISION

P.O. Box 2088
Santa Fe, New Mexico 87504-2088

Form C-102
Revised February 10, 1994
Submit to Appropriate District Office
State Lease - 4 Copies
Fee Lease - 3 Copies

WELL LOCATION AND ACREAGE DEDICATION PLAT

☐ AMENDED REPORT

API Number		Pool Code 78060	Pool Name HAPPY VALLEY -MORROW
Property Code	Property Name CANDLESTICK 15 STATE COM.		Well Number 1
GRID No. 166111	Operator Name CONCHO RESOURCES, INC.		Elevation 3282'

Surface Location

UL or lot No. P	Section 15	Township 22-S	Range 26-E	Lot Idn	Feet from the 660	North/South line SOUTH	Feet from the 660	East/West line EAST	County EDDY
--------------------	---------------	------------------	---------------	---------	----------------------	---------------------------	----------------------	------------------------	----------------

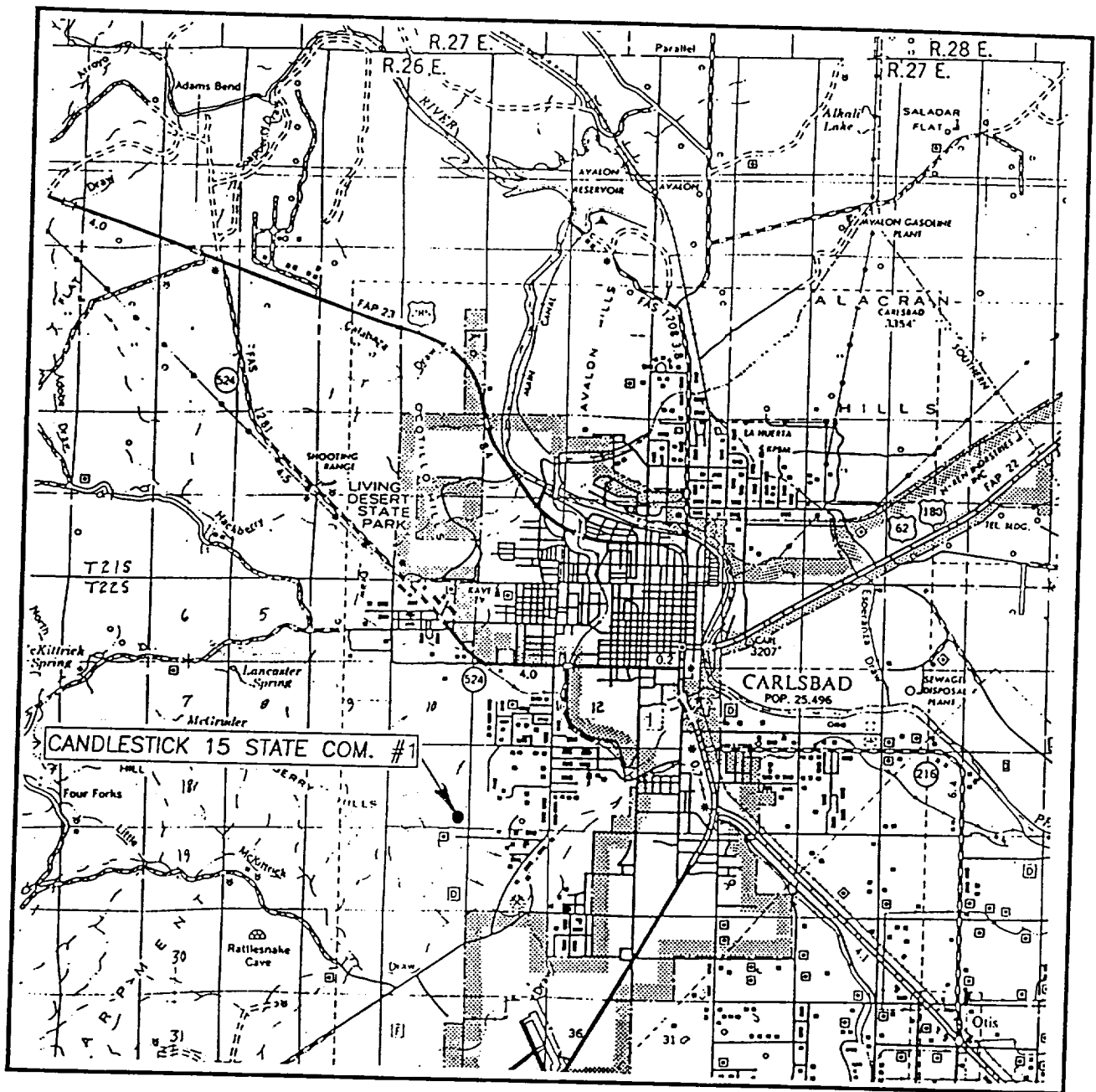
Bottom Hole Location If Different From Surface

UL or lot No.	Section	Township	Range	Lot Idn	Feet from the	North/South line	Feet from the	East/West line	County
Dedicated Acres 320	Joint or Infill	Consolidation Code	Order No.						

NO ALLOWABLE WILL BE ASSIGNED TO THIS COMPLETION UNTIL ALL INTERESTS HAVE BEEN CONSOLIDATED
OR A NON-STANDARD UNIT HAS BEEN APPROVED BY THE DIVISION

	OPERATOR CERTIFICATION I hereby certify the the information contained herein is true and complete to the best of my knowledge and belief. Signature Joe T. Janica Printed Name Agent Title 07/05/01 Date
	SURVEYOR CERTIFICATION I hereby certify that the well location shown on this plat was plotted from field notes of actual surveys made by me or under my supervision, and that the same is true and correct to the best of my belief. MAY 23, 2001 Date Surveyed Signature & Seal of Professional Surveyor 5/24/01 01-11-0636 Certificate No. RONALD J. EIDSON 3239 GARY EIDSON 12841

VICINITY MAP



SCALE: 1" = 2 MILES

SEC. 15 TWP. 22-S RGE. 26-E

SURVEY N.M.P.M.

COUNTY EDDY

DESCRIPTION 660' FSL & 660' FEL

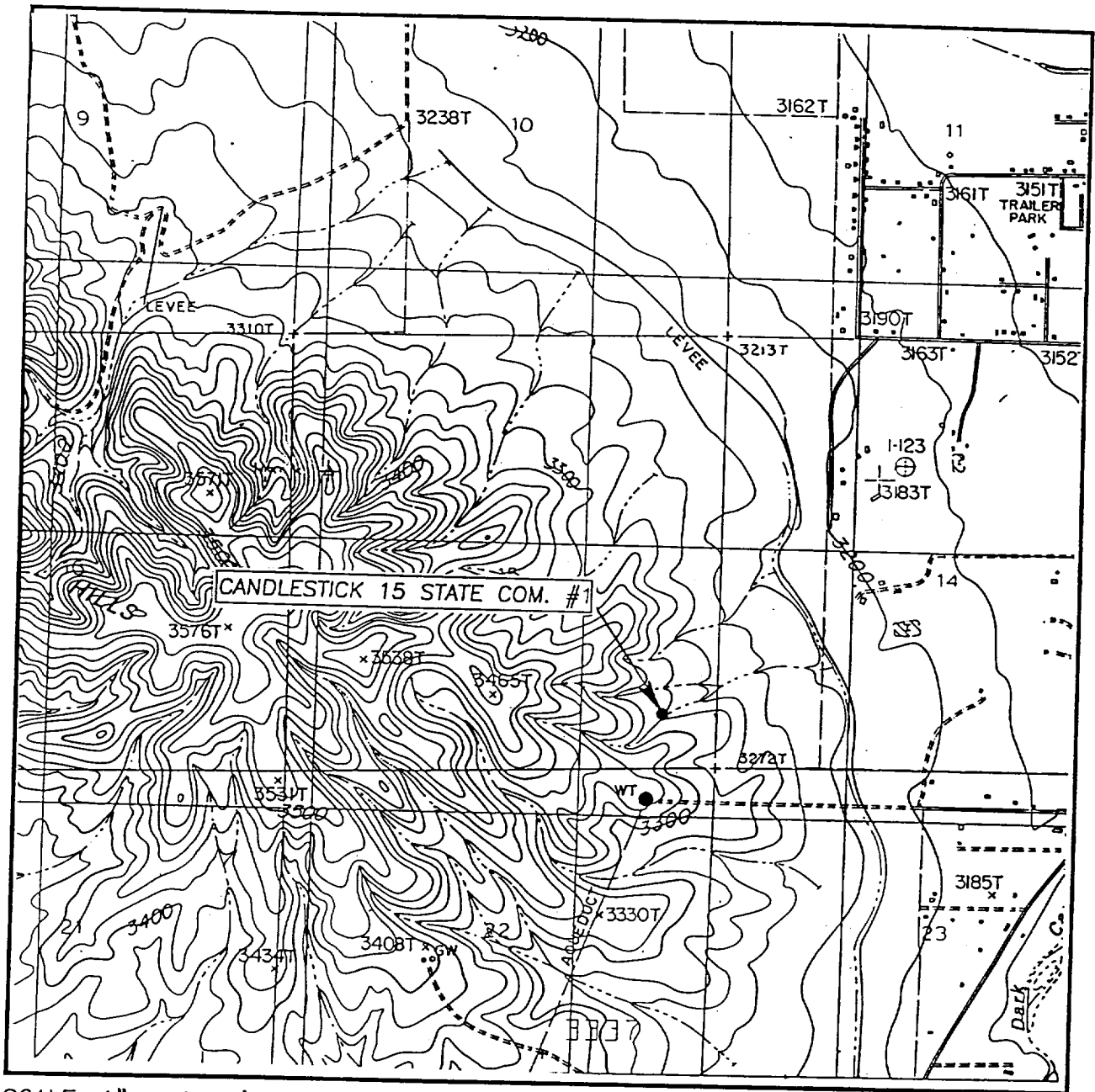
ELEVATION 3282'

OPERATOR CONCHO RESOURCES, INC.

LEASE CANDLESTICK 15 STATE COM.

JOHN WEST SURVEYING
HOBBS, NEW MEXICO
(505) 393-3117

LOCATION VERIFICATION MAP



SCALE: 1" = 2000'

CONTOUR INTERVAL: 20'

CARLSBAD WEST, N.M.

SEC. 15 TWP. 22-S RGE. 26-E

SURVEY N.M.P.M.

COUNTY EDDY

DESCRIPTION 660' FSL & 660' FEL

ELEVATION 3282'

OPERATOR CONCHO RESOURCES, INC.

LEASE CANDLESTICK 15 STATE COM.

U.S.G.S. TOPOGRAPHIC MAP

CARLSBAD WEST, N.M.

JOHN WEST SURVEYING
HOBBS, NEW MEXICO
(505) 393-3117

5000 PSI

Choke Manifold Assembly for 5M WP System

