

NEW MEXICO OIL CONSERVATION COMMISSION
WELL LOCATION AND ACREAGE DEDICATION PLAT

Form O-102
Supp. Order G-12B
Effective 1-1-65

All distances must be from the outer boundaries of the Section.

Operator Mobil Oil Corporation		Lease Federal NM Com		Well No. 1
Unit Letter F	Section 13	Township 23-S	Range 26-E	County Eddy
Actual Footage Location of Well: 1980' feet from the North line and 1980' feet from the West line				
Ground Level Elev. 3243.5	Producing Formation Atoka & Morrow	Pool Carlsbad, South	Dedicated Acreage 320 Acres	

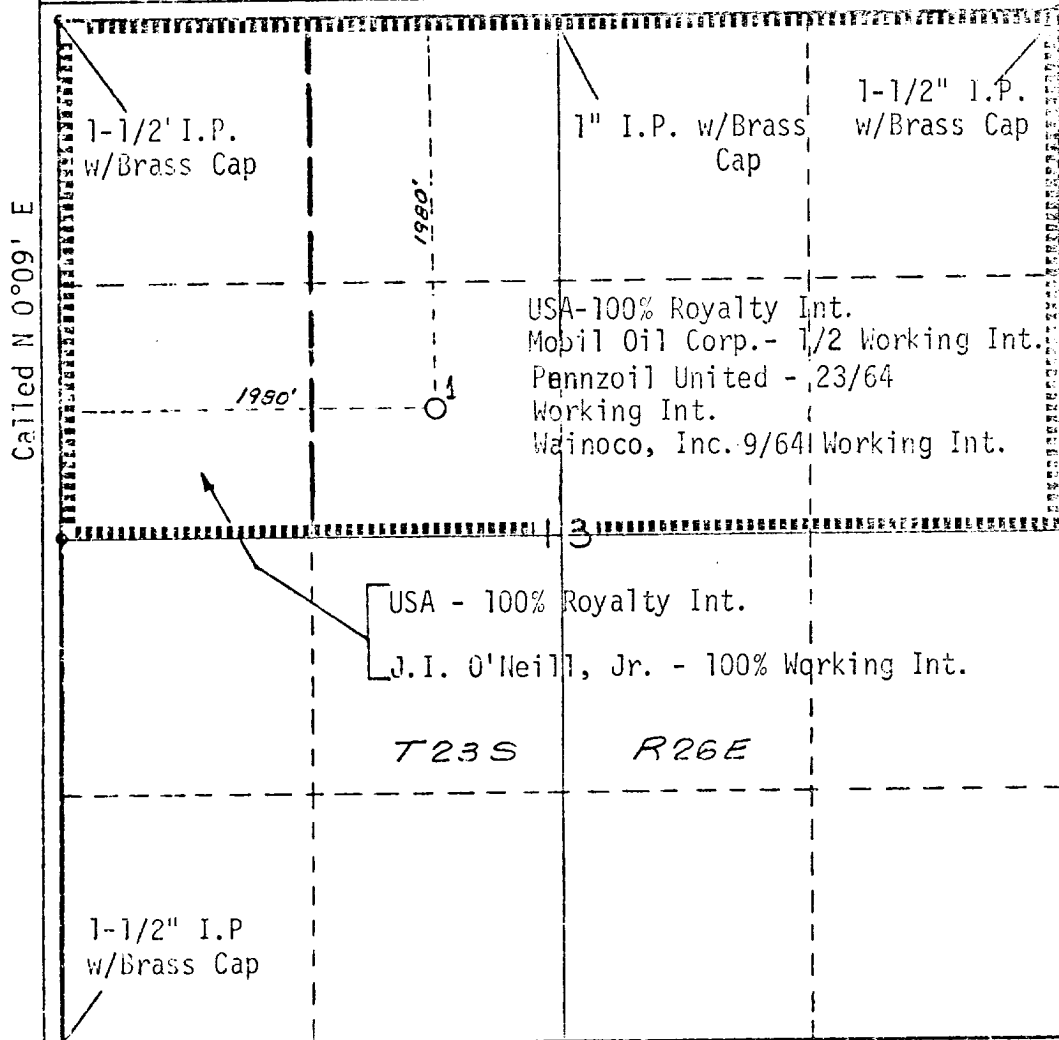
1. Outline the acreage dedicated to the subject well by colored pencil or hachure marks on the plat below.
2. If more than one lease is dedicated to the well, outline each and identify the ownership thereof (both as to working interest and royalty).
3. If more than one lease of different ownership is dedicated to the well, have the interests of all owners been consolidated by communitization, unitization, force-pooling, etc?

Yes No If answer is "yes," type of consolidation COMMUNITIZATION

If answer is "no," list the owners and tract descriptions which have actually been consolidated. (Use reverse side of this form if necessary.) _____

No allowable will be assigned to the well until all interests have been consolidated (by communitization, unitization, forced-pooling, or otherwise) or until a non-standard unit, eliminating such interests, has been approved by the Commission. 2659.7' Called N 89°12' W

RECEIVED
MAY 11 1973



CERTIFICATION

I hereby certify that the information contained herein is true and complete to the best of my knowledge and belief.

A. D. Bond
Name
A. D. Bond
Position
Proration Staff Assistant
Company
Mobil Oil Corporation
Date
May 9, 1973

I hereby certify that the well location shown on this plat was plotted from field notes of LAND SURVEYS made by me or under my supervision and that the same are true and correct to the best of my knowledge and belief.

WILSON D. WATSON, JR.
PROFESSIONAL ENGINEER AND LAND SURVEYOR
NEW MEXICO
No. 3958

Date Surveyed
May 4, 1973
Registered Professional Engineer and/or Land Surveyor
Wilson D. Watson, Jr.
Certificate No. 3050