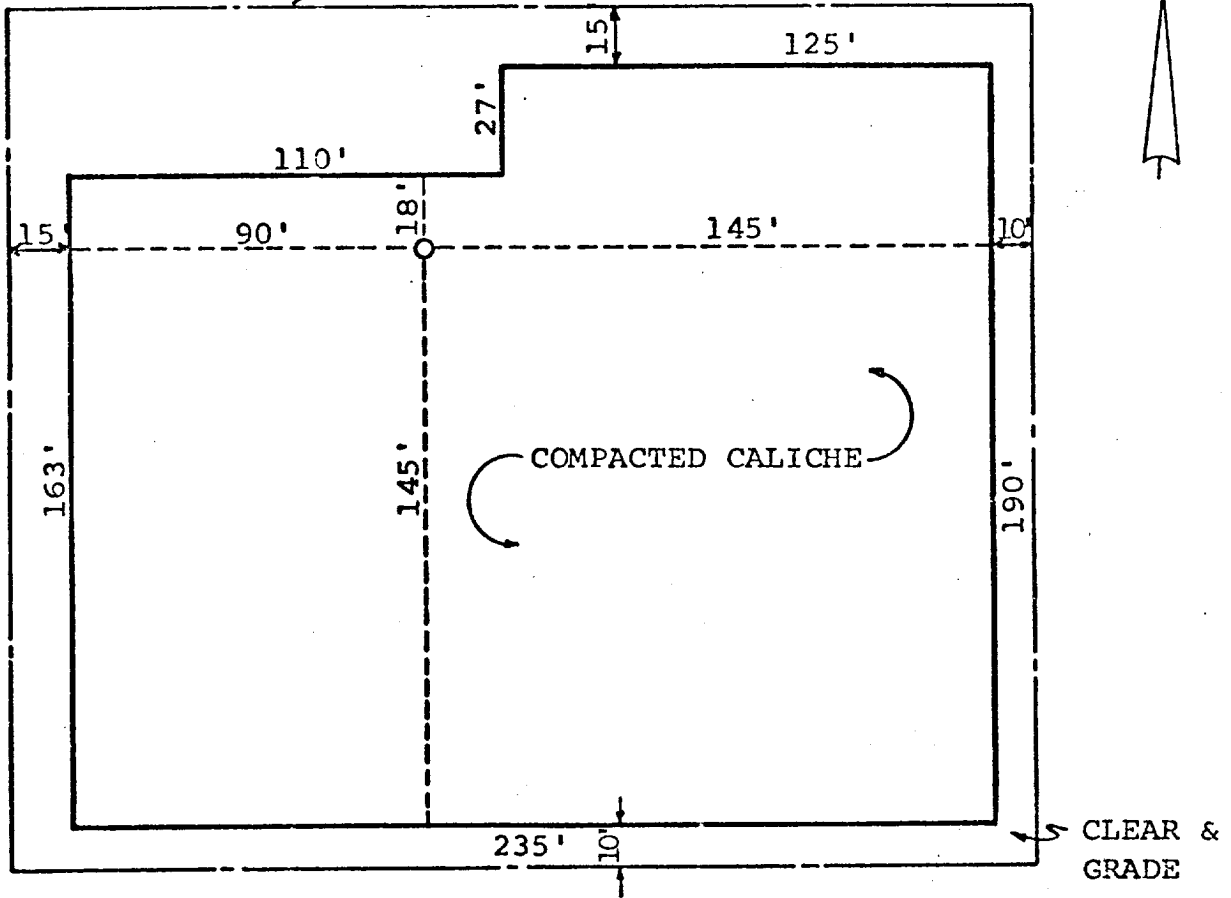


THIS DRAWING AND ALL INFORMATION THEREON IS THE PROPERTY OF SOCONY MOBIL OIL CO. INC., AND SHALL NOT BE COPIED OR USED EXCEPT FOR THE PURPOSE FOR WHICH

IT IS EXPRESSLY FURNISHED. THE DRAWING AND ANY COPIES THEREOF (PARTIAL OR COMPLETE) SHALL BE RETURNED TO THE OWNER ON DEMAND.

CO7227(111-61)

EDGE OF CLEARING →



APPROXIMATELY 1158 C.Y. CALICHE REQUIRED FOR 6" COMPACTED PAD.

RECEIVED

JUL 19 1973
U. S. GEOLOGICAL SURVEY
ARTESIA, NEW MEXICO

FEDERAL PP

NO.	DATE	BY	ALTERATION
STANDARD LOCATION PLAN 10,000'-15,000' DEEP WELLS ON STABLE SOIL			
MOBIL OIL CORPORATION Midland, Texas			