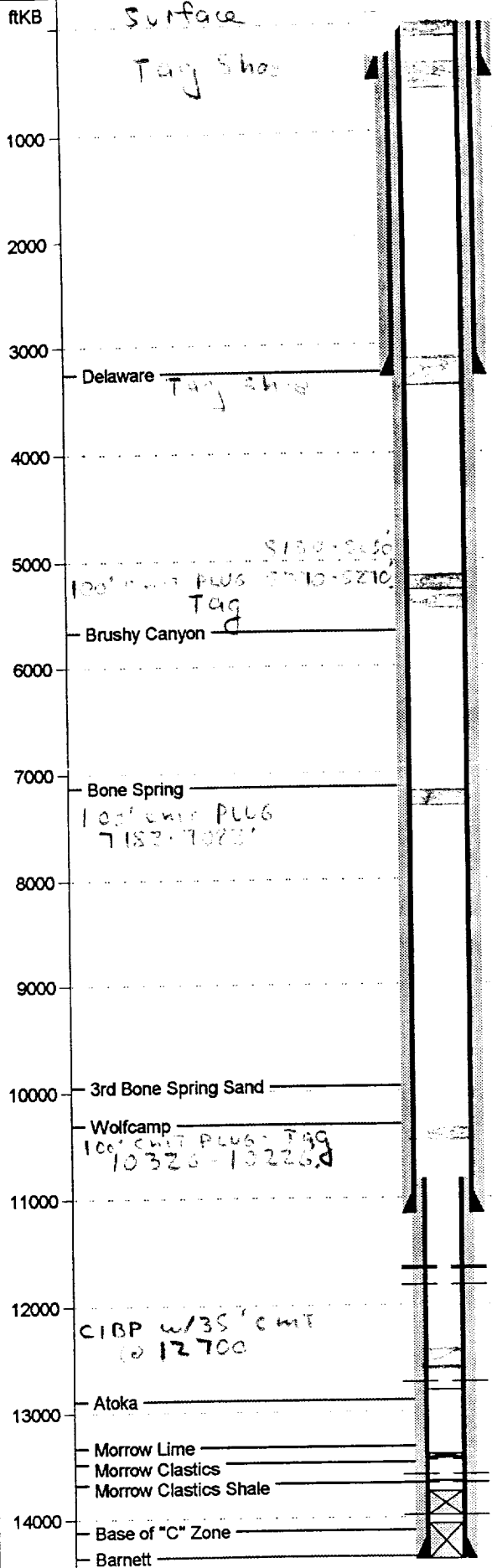


Oscar State No. 1
100.0% WI



Casing Strings	
518.0 - Surface - OD:13.375 in	Wt:48.00 lbs/ft Joints:12 Grade:H40
3292.0 - Intermediate 1 - OD:10.750 in	Wt:51.00 lbs/ft Joints:14 Grade:K55
	Wt:51.00 lbs/ft Joints:45 Grade:K55
	Wt:51.00 lbs/ft Joints:19 Grade:N80
554.0 - Stage collar	
11150.0 - Intermediate 2 - OD:7.625 in	Wt:33.70 lbs/ft Joints:10 Grade:N80
	Wt:26.40 lbs/ft Joints:144 Grade:S95
	Wt:29.70 lbs/ft Joints:80 Grade:S95
14396.0 - Production - OD:5.000 in	Wt:18.00 lbs/ft Joints:81 Grade:C95
	Wt:18.00 lbs/ft Joints:9 Grade:N80

TD:14396.0 ftKB PBTD:14062.0 ftKB

KB:3123.0 ft TH:3105.3 ft CF:3105.3 ft GRD:3102.0 ft

Formation Tops	
3252.0 - Delaware	
5671.0 - Brushy Canyon	
7132.0 - Bone Spring	
9955.0 - 3rd Bone Spring Sand	
10306.0 - Wolfcamp	
12892.0 - Atoka	
13332.0 - Morrow Lime	
13482.0 - Morrow Clastics	
13680.0 - Morrow Clastics Shale	
14124.0 - Base of "C" Zone	
14368.0 - Barnett	

General Well Info and Status

Field - Owen Mesa
 Pool - Wolfcamp / Atoka
 Spud Date - 10/19/79
 RR date - N/A
 On Prod. Date - N/A
 Status - 10/29/93
 Fluid - Gas Type - Cased
 Mode - Abandoned Structure - N/A

Other in Hole - 03/27/80

13460.0 - Packer - center

Perforations / Treatments	
13980.0 to 13983.0 - 02/15/80 - Jet perforation - 4 spft	
13979.0 to 13984.0 - 02/17/80 - Jet perforation - 4 spft	
13672.0 to 13675.0 - 03/09/80 - Jet perforation - 2 spft	
13677.0 to 13681.0 - 03/09/80 - Jet perforation - 2 spft	
13596.0 to 13600.0 - 03/29/80 - Jet perforation - 2 spft	
12730.0 to 12737.0 - 11/12/88 - Jet perforation - 4 spft	
12840.0 to 12840.0 - 01/27/89 - Cement squeeze	
12525.0 to 12527.0 - 02/01/89 - Cement squeeze	
12730.0 to 12737.0 - 02/11/89 - Jet perforation - 4 spft	
12770.0 to 12770.0 - 04/22/89 - Cement squeeze	
12730.0 to 12737.0 - 04/26/89 - Cement squeeze	
12731.0 to 12738.0 - 04/29/89 - Jet perforation - 4 spft	
12000.0 to 12000.0 - 07/01/89 - Cement squeeze	
11375.0 to 11375.0 - 07/01/89 - Cement squeeze	
11813.0 to 11819.0 - 07/12/89 - Jet perforation - 2 spft	
11664.0 to 11670.0 - 07/12/89 - Jet perforation - 2 spft	
11645.0 to 11656.0 - 07/12/89 - Jet perforation - 2 spft	
12729.0 to 12736.0 - 08/15/89 - Jet perforation - 4 spft	
12730.0 to 12737.0 - 10/21/89 - Jet perforation - 4 spft	

Plug Back / Abandonments	
14062.0 to 14396.0 - 01/20/80 - Cement.	
13761.0 to 13980.0 - 03/06/80 - Cement.	
13658.0 to 13662.0 - 03/27/80 - Bridge plug.	
13405.0 to 13440.0 - 11/04/88 - Cement on bridge plug.	
13440.0 to 13444.0 - 11/04/88 - Bridge plug.	
12806.0 to 12809.0 - 02/08/89 - Bridge plug pushed from squeeze	