

WELL: CASSIDY Com #1

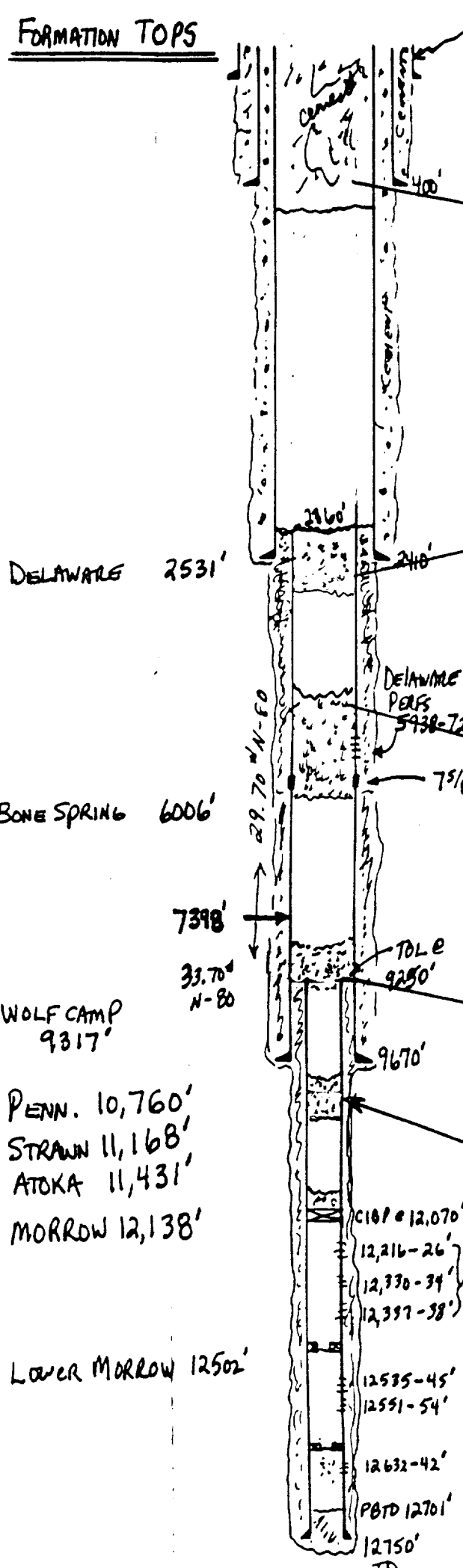
LOCATION: SW NW (1980' FNL x 660' FWL)

SEC. 29-T23S-R2BE, EDDY Co, NM

Hallwood Energy Companies

Well History Record

FORMATION TOPS



CONDUIT 36" AT 30'

Shallow Surface String
 16 : 65 x 84 #
 Gr K-55 @ 400'
 Cmt. wt. 750 Sxs.
 TOC @ SURFACE (50 SXS)
 Hole Size 20
 Max Mud Wt. 10.7

Deep Surface String
 10 3/4 : 40.5 #
 Gr K-55 @ 2410'
 1875 Sx LITE
 Cmt. wt. 300 Sx CLASS C Sxs.
 TOC @ SURFACE (CIRC. OUT) (125 SXS)
 Hole Size 14 3/4
 Max Mud Wt. 10.0

Intermediate
 7 5/8 : 29.7133.7 #
 Gr N-80 @ 9670
 Cmt. wt. (SEE 2 STAGE INFO) Sxs.
 TOC @ EST. 2400' FROM SURFACE
 Hole Size 9 7/8
 Max Mud Wt. 9.5

PRODUCTION LINER
 5 : 23.06 #
 Gr N-80 @ 12,750
 Cmt. wt. 500 Sxs.
 TOC @ 9250'
 Hole Size 6 1/2
 Max Mud Wt. 12.3

PROPOSED PLUGGED & ABANDONED WELLBORE

- ① 10 1/2 SURFACE PLUG, CAP AND D.H. MARKER.
- ② DUAL PURPOSE PLUG #2 AT TOP OF THE LINER AND TOP OF WOLF CAMP, FROM 9150' TO 9250'
- ③ PLUG #3 - AT THE TOP OF BONE SPRING AND ACROSS DELAWARE PERFS. PLUG SET FROM 5900 - 6125' TAG IT.
- ④ SINCE CEMENT ON OUTSIDE OF 7 5/8" CSB. IS AT 2400', THEN CUT 7 5/8" AS DEEP AS POSSIBLE (PROBABLY AT 2300-2350') SET A 100' "SHOE & CASING STUB" CEMENT PLUG #4 AT 2360-2460'
- ⑤ CEMENT FROM 350' TO 580' INSIDE OF 10 3/4" PIPE TO PROTECT SHALLOW ZONES, PLUG #5

NOTE:
9.0 PPG, 36 VIS (MINIMUM) PLUG MUD IN BETWEEN PLUGS.

* DRILLED 392' OF CEMENT ON TOP OF LINER FROM 8857 - 9249' ON 10/23/80.

X/S 1/20/93