

UNITED STATES  
DEPARTMENT OF THE INTERIOR  
GEOLOGICAL SURVEY

30-015-23854

5. LEASE DESIGNATION AND SERIAL NO.

131-10842-A

6. IF INDIAN, ALLOTTEE OR TRIBE NAME

7. UNIT AGREEMENT NAME

8. FARM OR LEASE NAME

9. WELL NO. Federal "A"

10. FIELD AND POOL, OR WILDCAT

Herradura Bend (Cherry Canyon)

11. SEC., T., R., M., OR BLK. AND SURVEY OR AREA  
Swc. 28, T-22-S, R-28-E,

12. COUNTY OR PARISH

New Mexico

1a. TYPE OF WORK

DRILL ☒DEEPEN ☐PLUG BACK ☐

b. TYPE OF WELL

OIL  
WELL ☒GAS  
WELL ☐

OTHER

SINGLE  
ZONE ☒MULTIPLE  
ZONE ☐

2. NAME OF OPERATOR

THE EASTLAND OIL COMPANY

RECEIVED

3. ADDRESS OF OPERATOR

P.O. DRAWER 3488, Midland, Texas 79702

JUL 2 1981

4. LOCATION OF WELL (Report location clearly and in accordance with any State requirements.)

At surface

1650' FSL and 1730' FEL

O. C. D.

ARTESIA, OFFICE

At proposed prod. zone

SAME

14. DISTANCE IN MILES AND DIRECTION FROM NEAREST TOWN OR POST OFFICE\*

7 miles SE direction from Carlsbad, New Mexico

16. DISTANCE FROM PROPOSED\* 910' from lease line

16. NO. OF ACRES IN LEASE

17. NO. OF ACRES ASSIGNED TO THIS WELL

(Also to nearest drlg. unit line, if any) 330' from unit line

320

40

18. DISTANCE FROM PROPOSED LOCATION\* TO NEAREST WELL, DRILLING, COMPLETED, OR APPLIED FOR, ON THIS LEASE, FT.

only well in this pool

19. PROPOSED DEPTH

4,000

20. ROTARY OR CABLE TOOLS

Rotary

21. ELEVATIONS (Show whether DF, RT, GR, etc.)

3062' GR, 3072 DF

22. APPROX. DATE WORK WILL START\*

As soon as possible

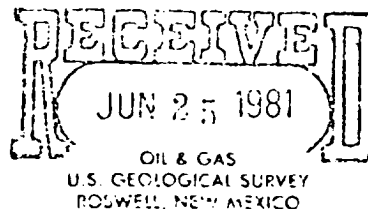
23. PROPOSED CASING AND CEMENTING PROGRAM

SIZE OF HOLE	SIZE OF CASING	WEIGHT PER FOOT	SETTING DEPTH	QUANTITY OF CEMENT
15"	10 3/4"	40.5#	3502	350 sx Class c w/2% CaCl2
7 7/8"	4 1/2"	9.5# J-55	4,000	250 sx 50-50 Pozmix 2% gel
				350 sx Lite (cement circulated)

Mud Program: Fresh water spud mud to set surface casing. Brine water to Delaware @2400'; Maintain 15-18 W.L. and 36 viscosity with salt gel and starch to total depth.

BOP Program: Hipple up with 8 5/8" head on surface casing. Use 8" series 900 API 3M double BOP. Test casing with 600 psi before drilling out.

Gas Not Dedicated.



IN ABOVE SPACE DESCRIBE PROPOSED PROGRAM: If proposal is to deepen or plug back, give data on present productive zone and proposed new productive zone. If proposal is to drill or deepen directionally, give pertinent data on subsurface locations and measured and true vertical depths. Give blowout preventer program, if any.

24.

SIGNED

GEORGE H. STEWART

TITLE Vice-President-Production DATE June 15, 1981

(This space for Federal or State office use)

(On: 8-1) GEORGE H. STEWART

PERMIT NO.

JUN 30 1981

APPROVAL DATE

APPROVED BY

CONDITIONS OF APPROVAL, IF ANY:

JAMES A. GILLHAM  
DISTRICT SUPERVISOR

TITLE

DATE

Supervisor's Office  
 1000 1st St.  
 San Francisco, CA 94103

All distances must be from the outer boundaries of the Section

1. Outline the acreage dedicated to the subject well by colored pencil or hatchure marks on the plat below.
2. If more than one lease is dedicated to the well, outline each and identify the ownership thereof (both as to working interest and royalty).
3. If more than one lease of different ownership is dedicated to the well, have the interests of all owners been consolidated by communitization, unitization, force-pooling, etc?

No allowable will be assigned to the well until all interests have been consolidated by communitization, unitization, forced-pooling, or otherwise or until a non-standard unit, eliminating such interests, has been approved by the Commission.

I hereby certify that the information contained herein is true and complete to the best of my knowledge and belief.

**June 22, 1981**

I hereby certify that the well location shown on this plat was plotted from field notes of actual surveys made by me or under my supervision and that the same is true and correct to the best of my knowledge and belief.

June 11, 1951

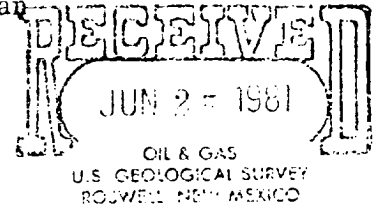
JOHN W WEST	878
PATRICK A ROMERO	8808
Ronald J Edison	3239

APPLICATION FOR DRILLING  
THE EASTLAND OIL COMPANY  
Federal A Well No. 1  
1650' FSL and 1730' FEL  
Sec. 28, T-22-S, R-28-E  
NMPM Eddy County, New Mexico

In conjunction with Form 9-331C, application for Permit to Drill subject well, The Eastland Oil Company submits the following items of pertinent information in accordance with USGS requirements:

1. The geologic surface formation is Quaternary.
2. The estimated tops of geologic marker are as follows:  
Anhydrite - 1,700'  
Delaware Lime - 2,385'  
Bell Canyon Sand - 2,469'  
Indian Draw Sand - 3,289'
3. The estimated depths at which anticipated water, oil or gas formations are expected:  
Water: Approximately 150'-200'  
Oil or Gas - Bell Canyon : 2469'-3289'  
Cherry Canyon : 3289'-4000'
4. Proposed Casing Program: See Form 9-331C
5. Pressure Control Equipment: See Form 9-331C
6. Mud Program: See Form 9-331C
7. Auxiliary Equipment: Challenger trailer mounted rotory rig with 65' derrick, complete with trailer mounted light plant, fuel tanks, water tank, and skid mounted mud pump.
8. Testing, Logging, and Coring Program:  
A. No drill stem test planned.  
B. Gamma Ray - B.C. Sonic Log, Dual Laterolog  
C. Side wall cores as indicated by shows.
9. No abnormal pressures or temperatures are anticipated.
10. Anticipated starting date: As Soon As Possible.

Multi-Point Surface Use and Operations Plan  
THE EASTLAND OIL COMPANY  
Federal A Well No. 1  
1650' FSL and 1730' FEL  
Sec. 28, T-22-S, R-28-E  
NMPM Eddy County, New Mexico



This plan is submitted with Form 9-331C, Application to Drill, covering the above described well. The purpose of this plan is to describe the location of the proposed well, the proposed construction activities and operation plan, the magnitude of necessary surface disturbance involved, and the procedures to be followed in rehabilitating the surface after completion of the operations, so that a complete appraisal can be made of the environmental effects associated with the operation.

1. Existing Roads:

- A. USGS topograph map marked Exhibit A - show existing roads with exit from paved road know as Refinery Road to location. The proposed location is approximately 7 miles SE direction from Carlsbad, New Mexico.

2. Planned Access Road:

- A. The proposed new access road will be approximately 75 feet in length from Refinery Road to the north east corner of the drilling pad. The road will lie in a north east to southwest direction.
- B. The new road will be 12 feet in width allowing additional width at point of origion to allow trucks to exit from Refinery Road.
- C. The new road will be caliched to a compacted depth of 6". No turnouts will be necessary and the road will follow the contour of the drainage at the point of exit.
- D. The center line of the new road has been staked and flagged.

3. Location of Existing Wells:

- A. The well locations in the vicinity of the proposed well are shown in Exhibit B.

4. Location of Existing and/or Proposed Facilities:

- A. There is no producing well on this lease at the present time from the depth or pool shown in application.
- B. In the event the well is productive, the necessary production facilities will be installed on the drilling pad. Power will be provided, if needed, by a gas or propane powered unit.

5. Location and type of Water Supply;

- A. It is planned to drill the proposed well with fresh water and brine obtained from commercial sources and trucked to the location using existing roads.

6. Sources of Construction Materials:
  - A. Any caliche required for construction of the drilling pad and new road will be obtained from an existing pit on federal surface shown in Exhibit A.
7. Methods of Handling Waste Disposal:
  - A. Drill cuttings will be disposed of in the reserve pit.
  - B. Drilling fluids will be allowed to evaporate in the reserve pits until the pits are dry.
  - C. Water produced during operations will be collected in tanks and hauled to an approved disposal system.
  - D. Oil produced during operations will be stored in tanks and sold.
  - E. Current laws and regulations pertaining to the disposal of human waste will be complied with.
  - F. Trash, waste paper, garbage, and junk will be burned in a separate trash pit and covered with a minimum of 24 inches of dirt. All waste material will be contained to prevent scattering by the wind.
  - G. All trash and debris will be burned or removed from the wellsite within 30 days after finishing drilling and/or completion operations.
8. Ancillary Facilities:
  - A. None required.
9. Wellsite Layout:
  - A. Exhibit C shows the dimensions of the well pad and reserve pits and location of major rig components.
  - B. The ground surface at the drilling location is sloping from the south. Slight leveling will be required for the pad area which will be covered with at least 6 inches of compacted caliche. No leveling will be required in the pit area.
  - C. The working pit and reserve pit will be plastic lined.
  - D. The pad and pit area have been staked and flagged.
10. Plans for Restoration of the Surface:
  - A. After drilling and completion operation have been finished, all equipment and materials not needed for further operations will be removed. The location will be cleaned of all trash and junk to leave the well site in as near original conditions as possible. Work will be completed within 90 days after finishing the well.
  - B. Unguarded pits, if any, containing fluids will be fenced until they are filled.
  - C. If the proposed wellsite is non-productive, all rehabilitation and/or vegetation requirements of the BLM and USGS will be complied with as soon as possible. All pits will be filled and leveled within 90 days after abandonment.

11. Topography

- A. The wellsite and access road are located in relatively flat, sandy area. Grass cover is limited and caliche is near the surface.
- B. The area is used for cattle grazing and wildlife consist of rabbits, lizards, and rodents.
- C. There are no ponds, lakes, or streams near the wellsite. The Pecos River is about one mile south at its nearest point.
- D. The wellsite is located on federal surface.
- E. An archaeological examination has been made in the area of the wellsite and clearance has been suggested. A copy of this report has been forwarded to the BLM and USGS.

12. Operators Representatives:

- A. The field representatives responsible for assuring compliance with the approved surface use plan are:

Travis Reed - Production Foreman  
The Eastland Oil Company, Odessa, Texas  
Phone - 915-366-9612 Home  
915-337-5747 Mobile

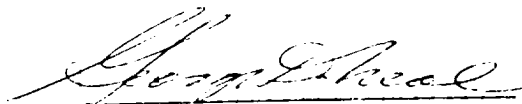
George D. Neal - Vice President Production  
The Eastland Oil Company, Midland, Texas  
Phone - 915-683-6293 Office  
915-367-8485 Home

The Eastland Oil Company office  
Midland, Texas 79702  
P.O. Drawer 3488  
Phone - 915-683-6293

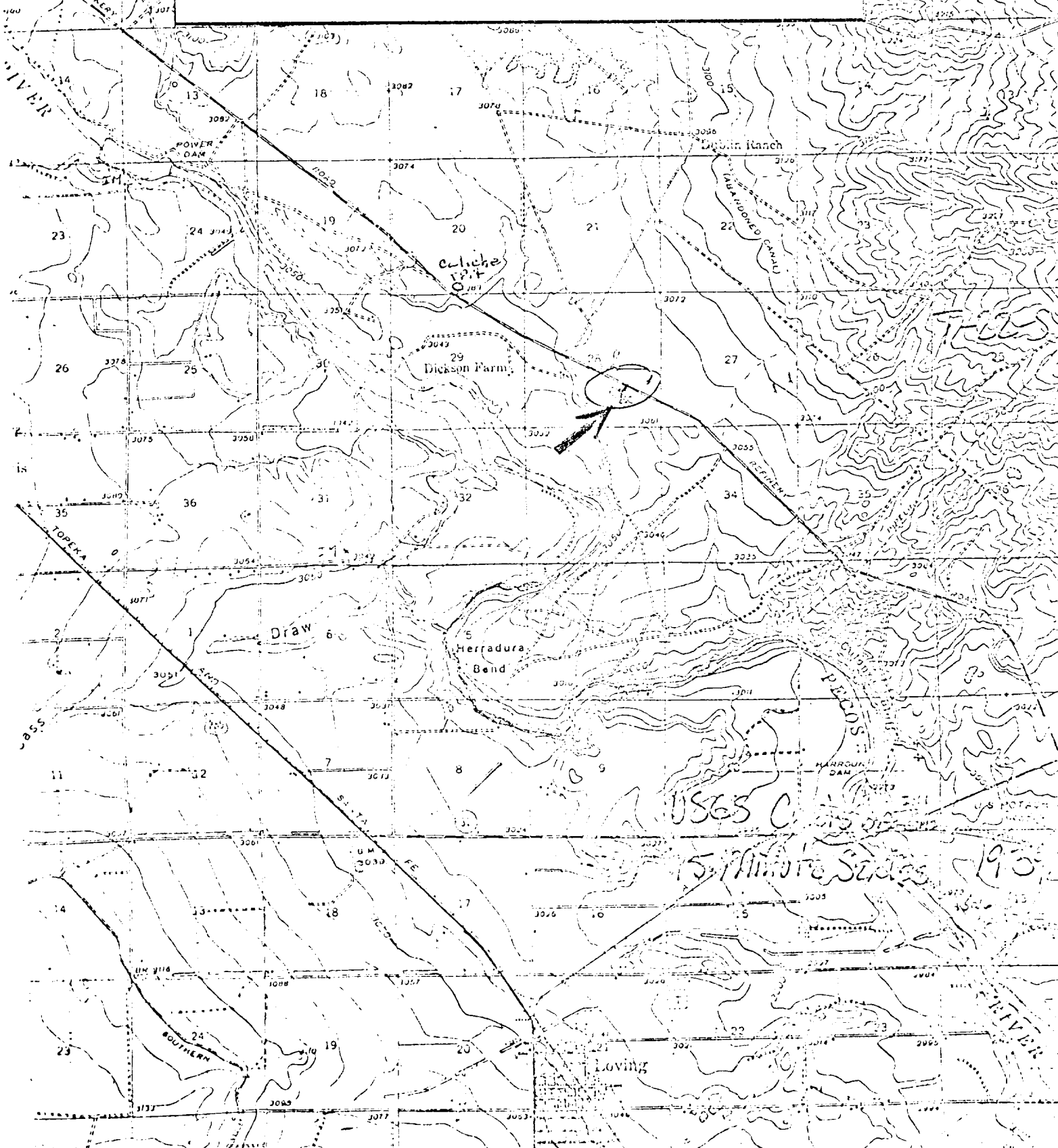
13. Certification:

I hereby certify that I, or persons under my direct supervision have inspected the proposed drillsite and access route; that I am familiar with the conditions which presently exist; that the statements made in this plan are to the best of my knowledge, true and correct; that the work associated with the operations proposed herein will be performed by the Eastland Oil Company and its contractors and subcontractors in conformity with this plan and the terms and conditions under which it is approved.

DATE: June 23, 1981

  
George D. Neal  
Vice President - Production  
The Eastland Oil Company

The Eastland Oil Company  
Federal A # 1  
Exhibit A



087106

4-1-82  
LG-10

2-15-82  
L-7018  
H-20

Exxon  
11-12-79

089182

Amoco  
9-1-75  
0415660

INDIAN DRAW  
UNIT  
AOCO (OPER.)

# The Eastland Oil Company Federal A #1 Exhibit B

Amoco  
5-15-82

W. Griffin  
Eastland Oil

U.S.

State

22 23

"Big Chief"

19105

Amoco  
10-1-73  
0415230

J.C. Barnes, et al 1/2  
Exxon  
7-12-79

(Union)  
HSC 1/2

Amoco  
3-29-79  
6-15-79

Rich-  
ardson

Suprem  
Pecos Irrig  
21-3087  
70-77-55  
Feb 23-80  
WA 8-23-81

J.C. Barnes,  
et al

J.C. Barnes,  
Big Chief  
Morrow Disc.

Amoco  
6-1-81  
009182

20

1-AE  
WC Disc.  
F00  
1.6 Mil.

J.C. Barnes, et al 1/3  
(Union)

3 Mil.

DUBIN RCH.

C.W. Wil-  
liams Jr.  
5-82  
11-20-81  
0-22-81

"Fed"  
U.S.

"Big Chief"  
Pecos Irrigation Co.

"Big Chief" 2.5 Mil  
Pecos Irrigation Co.

Hugh  
McMillan

Public  
Service  
Co.

Eastland Oil,  
et al

Coquina  
Carlsbad  
-Pecos  
1 Mil.

Eastland  
Oil et al  
HSC

Exxon  
2.0 Mil.  
26604

N/2  
HSC

"Gourley Fed"

Eastland  
Oil  
4-1-82  
19042

Union

Union

Union

Union

J.C. Barnes

J.C. Barnes

J.C. Barnes

J.C. Barnes

3-29-78

3-29-78

3-29-78

3-29-78

"City of Carlsbad"  
D.S. Harroun, Tr, M.I.  
Pecos Valley  
Land Co.

Eastland Oil, et al  
12-8-79  
5-2-78

(Eastland Oil)  
1-1-82  
19042

Eastland Oil  
1-1-82  
19042

D.S. Harroun, Tr, M.I.  
Pecos  
Valley Land Co.

Coquina  
HSC 9/2  
"Nathan-Fed."  
U.S.

Eastland Oil  
1-1-82  
19042

Eastland Oil, et al  
12-8-79  
5-2-78

Coquina  
HSC 9/2  
"Nathan-Fed."  
U.S.

Eastland Oil  
1-1-82  
19042

Eastland Oil, et al  
12-8-79  
5-2-78

Coquina  
HSC 9/2  
"Nathan-Fed."  
U.S.

Eastland Oil  
1-1-82  
19042

Eastland Oil, et al  
12-8-79  
5-2-78

Coquina  
HSC 9/2  
"Nathan-Fed."  
U.S.

Eastland Oil  
1-1-82  
19042

Eastland Oil, et al  
12-8-79  
5-2-78

Coquina  
HSC 9/2  
"Nathan-Fed."  
U.S.

Eastland Oil  
1-1-82  
19042

Eastland Oil, et al  
12-8-79  
5-2-78

Coquina  
HSC 9/2  
"Nathan-Fed."  
U.S.

Eastland Oil  
1-1-82  
19042

Eastland Oil, et al  
12-8-79  
5-2-78

Coquina  
HSC 9/2  
"Nathan-Fed."  
U.S.

Eastland Oil  
1-1-82  
19042

Eastland Oil, et al  
12-8-79  
5-2-78

Coquina  
HSC 9/2  
"Nathan-Fed."  
U.S.

Eastland Oil  
1-1-82  
19042

Eastland Oil, et al  
12-8-79  
5-2-78

Coquina  
HSC 9/2  
"Nathan-Fed."  
U.S.

Eastland Oil  
1-1-82  
19042

Eastland Oil, et al  
12-8-79  
5-2-78

Coquina  
HSC 9/2  
"Nathan-Fed."  
U.S.

Eastland Oil  
1-1-82  
19042

Eastland Oil, et al  
12-8-79  
5-2-78

Coquina  
HSC 9/2  
"Nathan-Fed."  
U.S.



The Eastland Oil Company  
Federal A #1  
Exhibit C



scale: 1" = 50'

