

**NEW MEXICO OIL CONSERVATION COMMISSION  
WELL LOCATION AND ACREAGE DEDICATION PLAT**

Form C-102  
Supersedes C-128  
Effective 1-1-65

All distances must be from the outer boundaries of the Section.

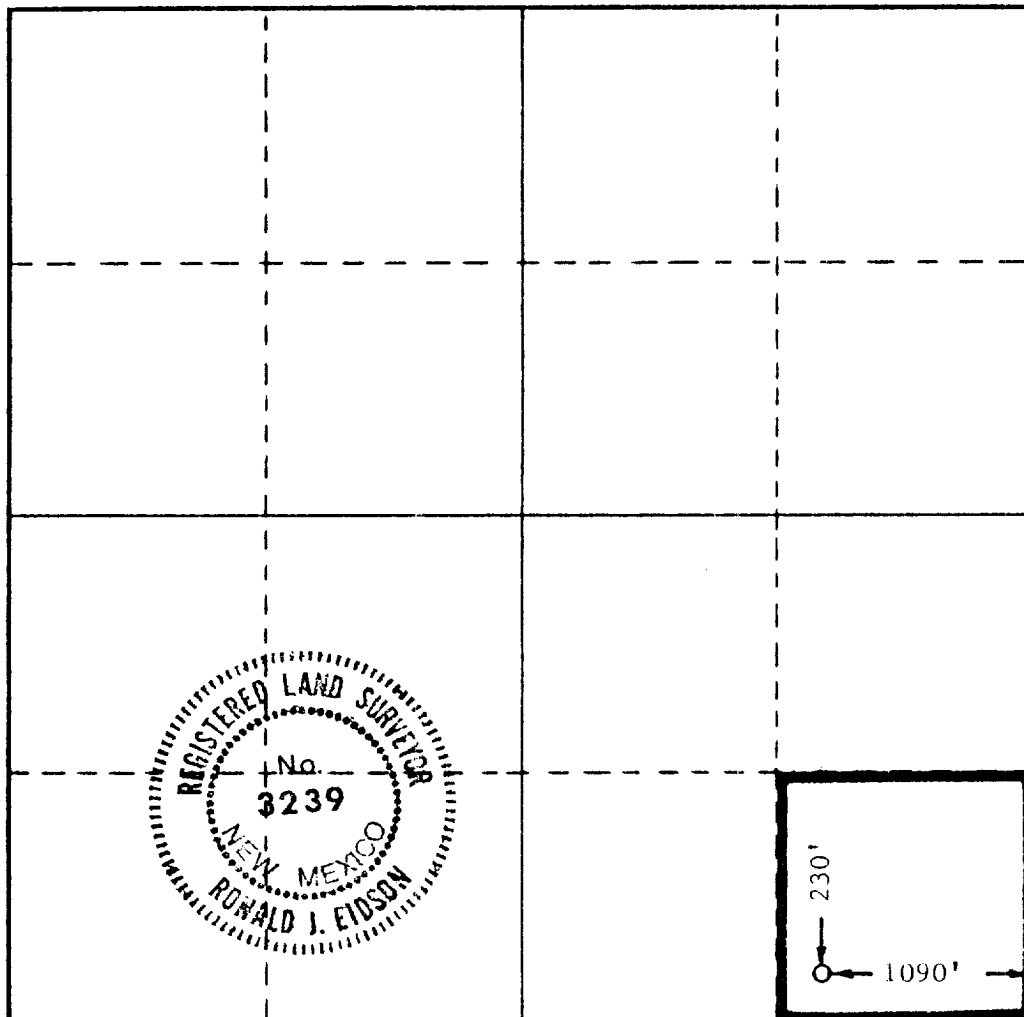
Operator <b>Perry R. Bass</b>			Lease <b>Bass 3 Federal</b>		Well No. <b>1</b>
Unit Letter <b>P</b>	Section <b>3</b>	Township <b>22-South</b>	Range <b>28-East</b>	County <b>Eddy</b>	
Actual Footage Location of Well: <b>230</b> feet from the <b>South</b> line and <b>1090</b> feet from the <b>East</b> line					
Ground Level Elev. <b>3142.7'</b>	Producing Formation <b>DELAWARE</b>		Pool <b>INDIAN DRAW, EAST</b>	Dedicated Acreage: <b>40</b> Acres	

1. Outline the acreage dedicated to the subject well by colored pencil or hachure marks on the plat below.
2. If more than one lease is dedicated to the well, outline each and identify the ownership thereof (both as to working interest and royalty).
3. If more than one lease of different ownership is dedicated to the well, have the interests of all owners been consolidated by communitization, unitization, force-pooling, etc?

☐ Yes ☐ No If answer is "yes," type of consolidation \_\_\_\_\_

If answer is "no," list the owners and tract descriptions which have actually been consolidated. (Use reverse side of this form if necessary.) \_\_\_\_\_

No allowable will be assigned to the well until all interests have been consolidated (by communitization, unitization, forced-pooling, or otherwise) or until a non-standard unit, eliminating such interests, has been approved by the Commission.



**CERTIFICATION**

I hereby certify that the information contained herein is true and complete to the best of my knowledge and belief.

*Stephen D. Smith*

Name

**Stephen D. Smith**

Position

**Asst. Drilling Engineer**

Company

**Perry R. Bass**

Date

**June 18, 1985**

I hereby certify that the well location shown on this plat was plotted from field notes of actual surveys made by me or under my supervision, and that the same is true and correct to the best of my knowledge and belief.

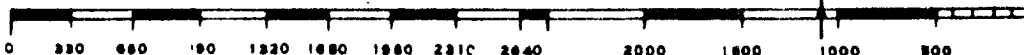
Date Surveyed

**6-18-85**

Registered Professional Engineer and/or Land Surveyor

*Ronald J. Eidson*

Certificate No. **JOHN WEST, 676**  
**RONALD J. EIDSON, 3239**



**N MEXICO OIL CONSERVATION COMMISSION  
WELL LOCATION AND ACREAGE DEDICATION PLAT**

Form C-102  
Supersedes C-128  
Effective 1-1-65

All distances must be from the outer boundaries of the Section

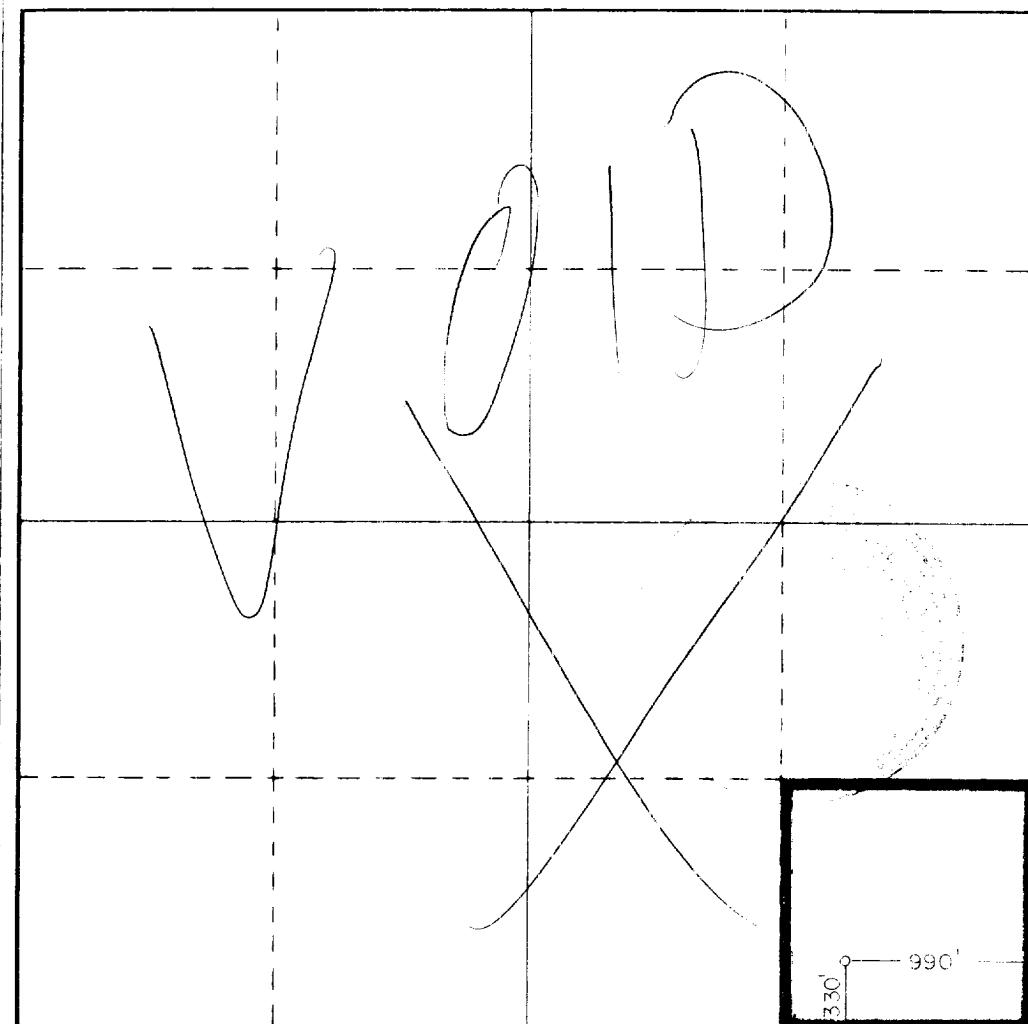
Operator <b>PERRY R. BASS</b>			Lease <b>BASS "B" FLD</b>		Well No. <b>1</b>
Tract Letter <b>P</b>	Section <b>3</b>	Township <b>22S</b>	Range <b>18E</b>	County <b>EDDY</b>	
Actual Entrance Location of Well:					
<b>330</b> feet from the <b>SOUTH</b> line and		<b>990</b> feet from the <b>EAST</b> line			
Ground Level Elev. <b>3139.7</b>	Producing Formation <b>Delaware</b>	Pool <b>Indian Draw, East</b>		Dedicated Acreage: <b>40</b> Acres	

1. Outline the acreage dedicated to the subject well by colored pencil or hachure marks on the plat below.
2. If more than one lease is dedicated to the well, outline each and identify the ownership thereof (both as to working interest and royalty).
3. If more than one lease of different ownership is dedicated to the well, have the interests of all owners been consolidated by communitization, unitization, force-pooling, etc?

☐ Yes    ☐ No    If answer is "yes," type of consolidation \_\_\_\_\_

If answer is "no," list the owners and tract descriptions which have actually been consolidated. (Use reverse side of this form if necessary.) \_\_\_\_\_

No allowable will be assigned to the well until all interests have been consolidated (by communitization, unitization, forced-pooling, or otherwise) or until a non-standard unit, eliminating such interests, has been approved by the Commission.



**CERTIFICATION**

I hereby certify that the information contained herein is true and complete to the best of my knowledge and belief.

*Stephen D. Smith*  
Name

**Stephen D. Smith**

Position  
**Asst. Drilling Engineer**

Company  
**Perry R. Bass**

Date  
**April 22, 1985**

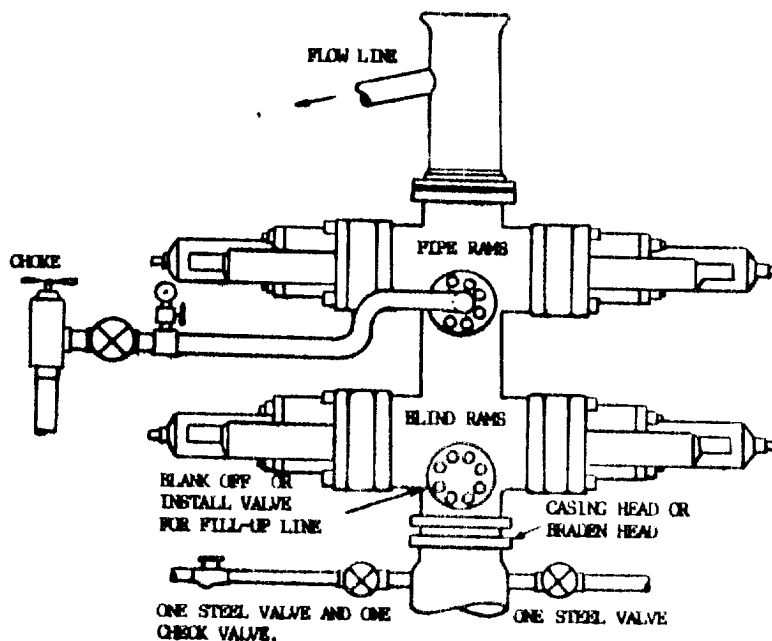
I hereby certify that the well location shown on this plat was plotted from field notes of actual surveys made by me or under my supervision, and that the same is true and correct to the best of my knowledge and belief.

Date Surveyed  
**4/18/85**

Registered Professional Engineer  
and/or Land Surveyor

*John W. West*

Certificate No. **JOHN W. WEST, 676**  
**RONALD J. EIDSON, 3239**



THE FOLLOWING CONSTITUTE MINIMUM BLOWOUT PREVENTER REQUIREMENTS

- A. One double gate blowout preventer with lower rams blind and upper rams for pipe, all hydraulically controlled.
- B. Opening on preventers between rams to be flanged, studded or clamped and at least two inches diameter.
- C. All connections from operating manifold to preventers to be all steel hose or tube a minimum of one inch in diameter.
- D. The available closing pressure shall be at least 15% in excess of that required with sufficient volume to operate (close, open, and re-close) the preventers.
- E. All connections to and from preventers to have a pressure rating equivalent to that of the BOP's.
- F. Manual controls to be installed before drilling cement plug.
- G. Valve to control flow through drill pipe to be located on rig floor.
- H. Choke may be either positive or adjustable. Choke spool may be used between rams.

HEP00 11

ONE HYDRAULIC DUAL BLOWOUT PREVENTER



STATE OF NEW MEXICO  
**ENERGY AND MINERALS DEPARTMENT**  
OIL CONSERVATION DIVISION

TONY ANAYA  
GOVERNOR

June 14, 1985

POST OFFICE BOX 2088  
STATE LAND OFFICE BUILDING  
SANTA FE, NEW MEXICO 87501  
(505) 827-5800

Mr. Daniel S. Nutter  
105 East Alicante  
Santa Fe, New Mexico 87501

**Administrative Order NSL-2063**

Dear Mr. Nutter:

Reference is made to your application on behalf of Perry R. Bass for a non-standard location for his Bass Federal 3 Well No. 1 to be located 230 feet from the South line and 1090 feet from the East line of Section 3, Township 22 South, Range 28 East, NMPM, Indian Draw Field, Eddy County, New Mexico. The SE/4 SE/4 of said Section 3 shall be dedicated to the well.

By authority granted me under the provisions of Rule 104 F(I), the above-described unorthodox location is hereby approved.

Sincerely,

R. L. STAMETS, DIRECTOR

RLS/DC/dr

cc: Oil Conservation Division - Artesia  
Bureau of Land Management - Artesia

EXHIBIT "A"