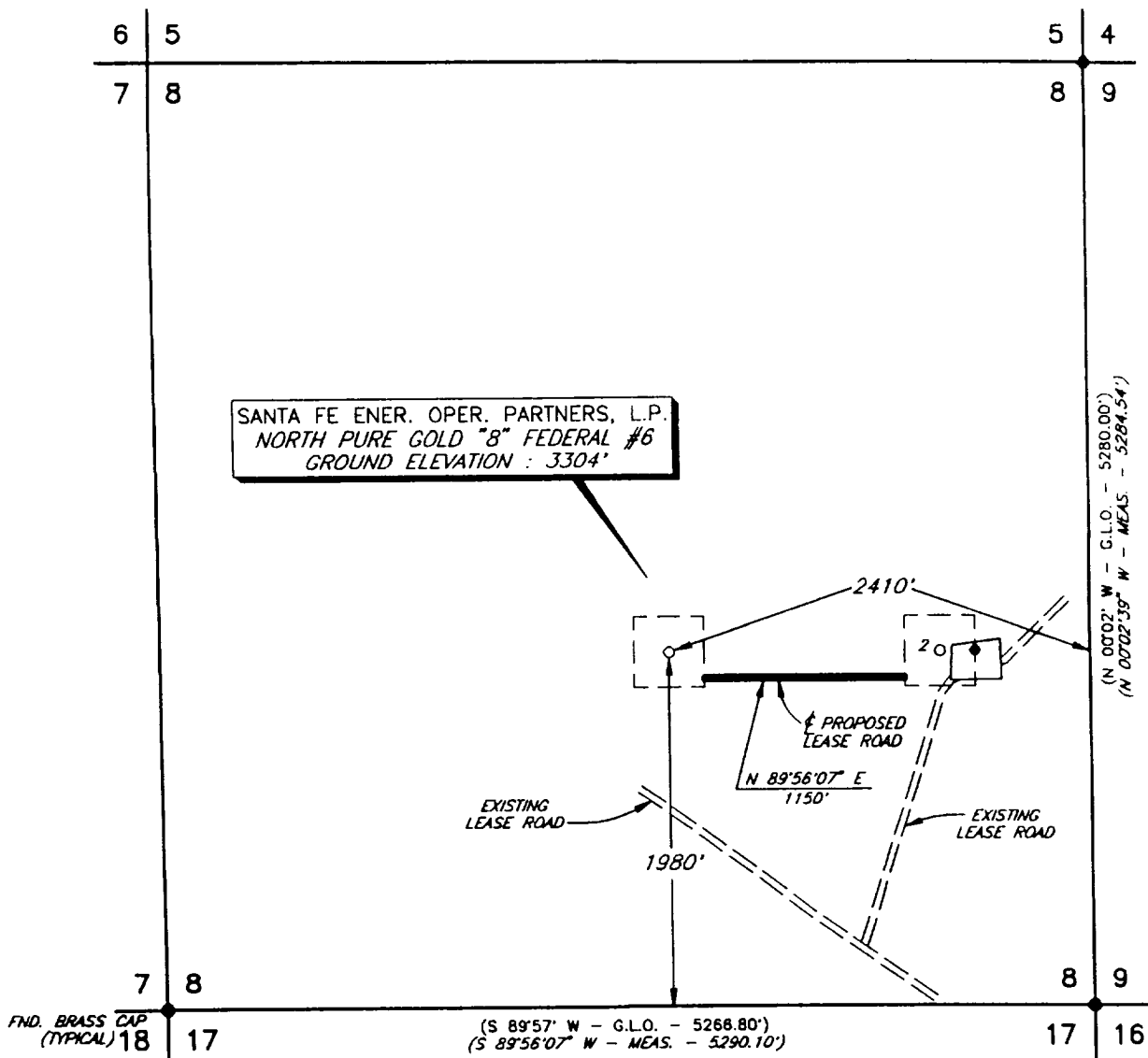
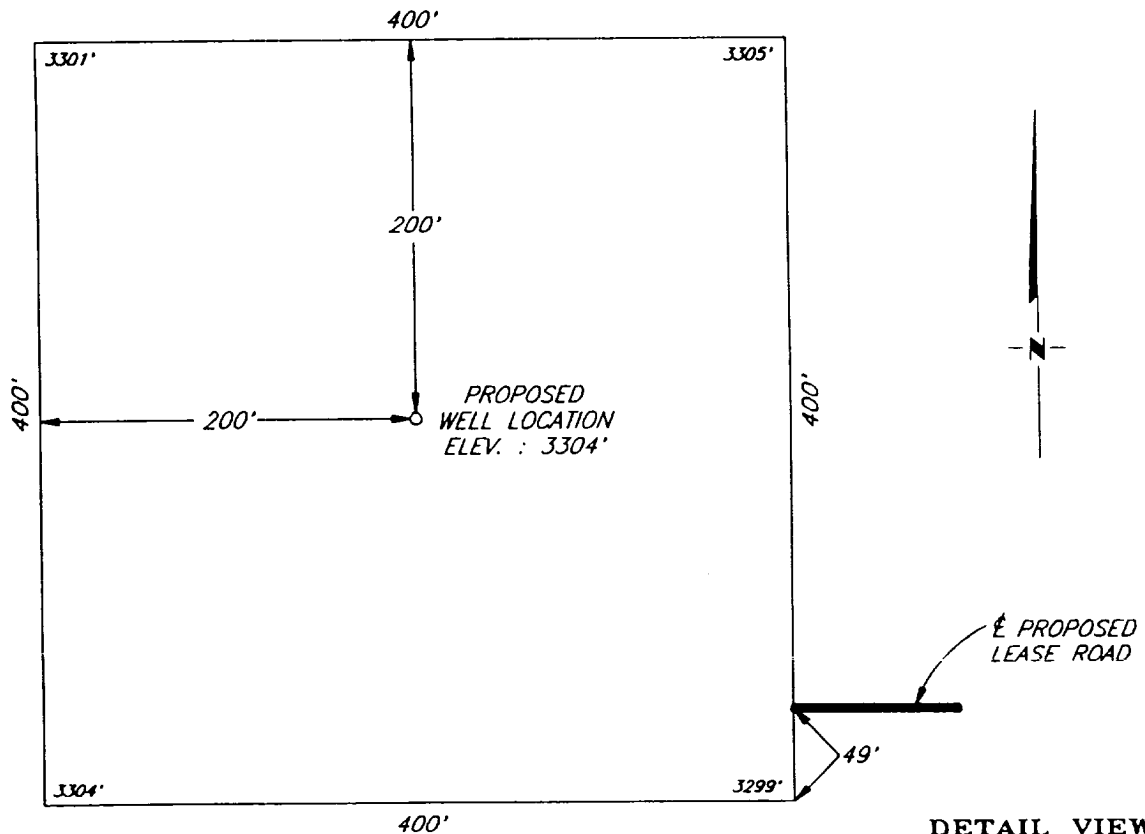


PLAT SHOWING PROPOSED
WELL LOCATION AND LEASE ROAD IN
SECTION 8, T-23-S, R-31-E, N.M.P.M.
EDDY COUNTY, NEW MEXICO



PLAN VIEW
1" = 1000'



DETAIL VIEW
1" = 100'

				SANTA FE ENER. OPER. PARTNERS, L.P. MIDLAND, TEXAS		SCALE: AS SHOWN	
						DATE: JUNE 25, 1993	
NO.	REVISION	DATE	BY	SURVEYING AND MAPPING BY TOPOGRAPHIC LAND SURVEYORS MIDLAND, TEXAS		JOB NO.: 97087	
SURVEYED BY: R.J.O.						48 SE	
DRAWN BY: V.H.B.						SHEET : 1 OF 1	
APPROVED BY: L.W.B.							