

District II
1301 W. Grand Avenue, Artesia, NM 88210
District III
1000 Rio Brazos Road, Aztec, NM 87410
District IV
1220-S. St. Francis Dr., Santa Fe, NM 87505

Oil Conservation Division
1220 South St. Francis Dr.
Santa Fe, NM 87505

015F
BHM
S+hd
OP

Submit to appropriate District Office
State Lease - 6 Copies
Fee Lease - 5 Copies

AMENDED REPORT

APPLICATION FOR PERMIT TO DRILL, RE-ENTER, DEEPEN, PLUGBACK, OR ADD A ZONE

¹ Operator Name and Address POGO PRODUCING COMPANY P.O. BOX 10340 MIDLAND, TEXAS 79702		² GRID Number 17891
³ Property Code 9347		³ Property Name STATE "V" 492
		⁴ API Number 30- 015-32466
		⁶ Well No. 2

⁷ Surface Location

UL or lot no.	Section	Township	Range	Lot Idn	Feet from the	North/South line	Feet from the	East/West line	County
C	27	24S	28E		800'	NORTH	2300'	WEST	EDDY

⁸ Proposed Bottom Hole Location If Different From Surface

UL or lot no.	Section	Township	Range	Lot Idn	Feet from the	North/South line	Feet from the	East/West line	County

⁹ Proposed Pool 1 UNDES. MALAGA-MORROW	¹⁰ Proposed Pool 2
--	-------------------------------

¹¹ Work Type Code N	¹² Well Type Code G	¹³ Cable/Rotary ROTARY	¹⁴ Lease Type Code S	¹⁵ Ground Level Elevation
¹⁶ Multiple NO	¹⁷ Proposed Depth 13,200'	¹⁸ Formation MORROW	¹⁹ Contractor UNKNOWN	²⁰ Spud Date WHEN APPROVED

²¹ Proposed Casing and Cement Program

Hole Size	Casing Size	Casing weight/foot	Setting Depth	Sacks of Cement	Estimated TCC
25"	20"	NA	40'	Redi-mix	surface
17½"	13 3/8"	54.5	600'	600 Sx.	Surface
12½"	9 5/8"	40.5	2600'	1000 Sx.	Surface
8½"	7"	26	9700'	1500 Sx	2000' from sur.
6 1/8"	5"	18	Liner 2500'	400 Sx.	9500' top of lin
4 1/8"	2 7/8" tub.	7.9	13,200'	150 Sx	12,000'

²² Describe the proposed program. If this application is to DEEPEN or PLUG BACK, give the data on the present productive zone and proposed new productive zone. Describe the blowout prevention program, if any. Use additional sheets if necessary.

SEE ATTACHED SHEET



NSL-4790

²² I hereby certify that the information given above is true and complete to the best of my knowledge and belief. Signature: <i>Joe T. Janica</i>	<i>B6A</i> OIL CONSERVATION DIVISION Approved by: ORIGINAL SIGNED BY TIM W. GUM DISTRICT II SUPERVISOR
Printed name: Joe T. Janica Title: Agent	Title: Approval Date: OCT 08 2002 Expiration Date: OCT 08 2003
Date: 09/18/02 Phone: 505-391-8503	Conditions of Approval:

POGO PRODUCING COMPANY
STATE "V" 492 # 2
800' FNL & 2300' FWL
SECTION 27 T24S-R28E
EDDY CO. NM

1. Drill 25" hole to 40'. Set 40' of 20" conductor pipe and cement to surface with Redi-mix.
2. Drill 17½" hole to 600'. Run and set 600' of 13 3/8" 54.5# J-55 ST&C casing. Cement 600 Sx. of Class "C" cement + 2% CaCl, ¼# Flocele/Sx. circulate cement to surface.
3. Drill 12¼" hole to 2600'. Run and set 2600' of 9 5/8" 40.5# N-80 ST&C casing. Cement 1000 Sx. of Class "C" cement + additives, circulate cement to surface.
4. Drill 8½" hole to 9700'. Run and set 9700' of 7" 26# P-110 ST&C casing. Cement in two stages (DV tool at 5800'±). Cement with 1500 Sx. of Class "H" cement + additives top of cement estimate at 2000'± from surface.
5. Drill 6 1/8" hole to 12,000'. Run and set a 2500'± 5" 18# S-95ST&C liner from 12,000' back to 9500'±. Cement with 400 Sx. of Class "H" Low water loss cement + additives.
6. Drill 4 1/8" hole to 13,200'. Run and set 13,200' of 2 7/8" 7.9# P-110 tubing. Cement with 150 Sx. of Class "H" Premium Plus low water loss cement, estimate top or cement 12,000'.

B.O.P. from surface to 9700'. 5000 PSI with 3" 5000PSI choke manifold

B.O.P. from 9700' to TD will be 10,000 PSI with a 3" 10,000 PSI choke manifold

DISTRICT I
P.O. Box 1880, Hobbs, NM 88241-1880

State of New Mexico
Energy, Minerals and Natural Resources Department

Form C-102
Revised February 10, 1994
Submit to Appropriate District Office
State Lease - 4 Copies
Fee Lease - 3 Copies

DISTRICT II
P.O. Drawer DD, Artesia, NM 88211-0719

OIL CONSERVATION DIVISION
P.O. Box 2088
Santa Fe, New Mexico 87504-2088

DISTRICT III
1000 Rio Brazos Rd., Aztec, NM 87410

DISTRICT IV
P.O. BOX 2088, SANTA FE, N.M. 87504-2088

WELL LOCATION AND ACREAGE DEDICATION PLAT

AMENDED REPORT

API Number	Pool Code	Pool Name
		UNDES. MALAGA-MORROW
Property Code	Property Name	Well Number
	STATE "V" 492	2
OGRID No.	Operator Name	2987'
17891	POGO PRODUCING COMPANY	2986'

Surface Location

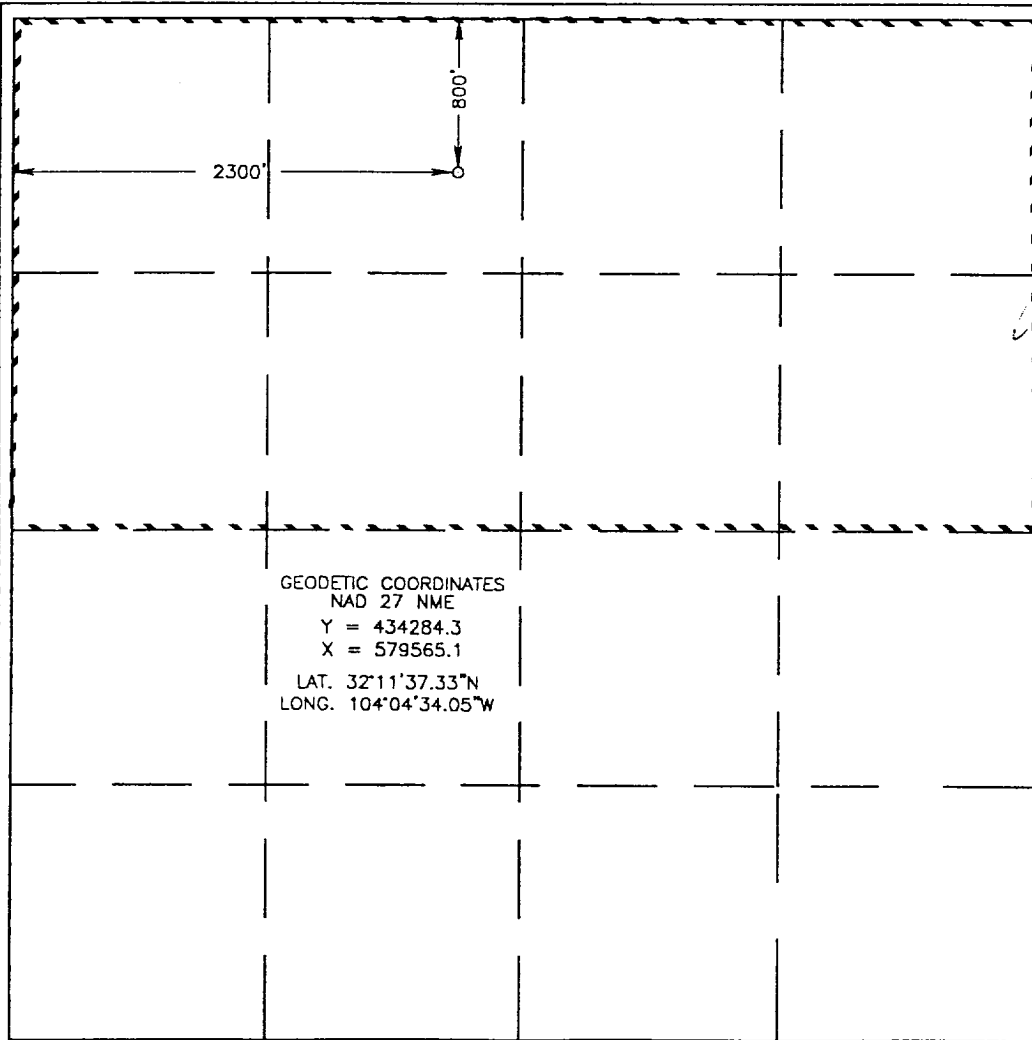
UL or lot No.	Section	Township	Range	Lot Idn	Feet from the	North/South line	Feet from the	East/West line	County
C	27	24-S	28-E		800'	NORTH	2300'	WEST	EDDY

Bottom Hole Location If Different From Surface

UL or lot No.	Section	Township	Range	Lot Idn	Feet from the	North/South line	Feet from the	East/West line	County

Dedicated Acres	Joint or Infill	Consolidation Code	Order No.
320			

NO ALLOWABLE WILL BE ASSIGNED TO THIS COMPLETION UNTIL ALL INTERESTS HAVE BEEN CONSOLIDATED OR A NON-STANDARD UNIT HAS BEEN APPROVED BY THE DIVISION



OPERATOR CERTIFICATION

I hereby certify that the information contained herein is true and complete to the best of my knowledge and belief.

Joe T. Janica
Signature
Joe T. Janica
Printed Name
Agent
Title
09/18/02
Date

SURVEYOR CERTIFICATION

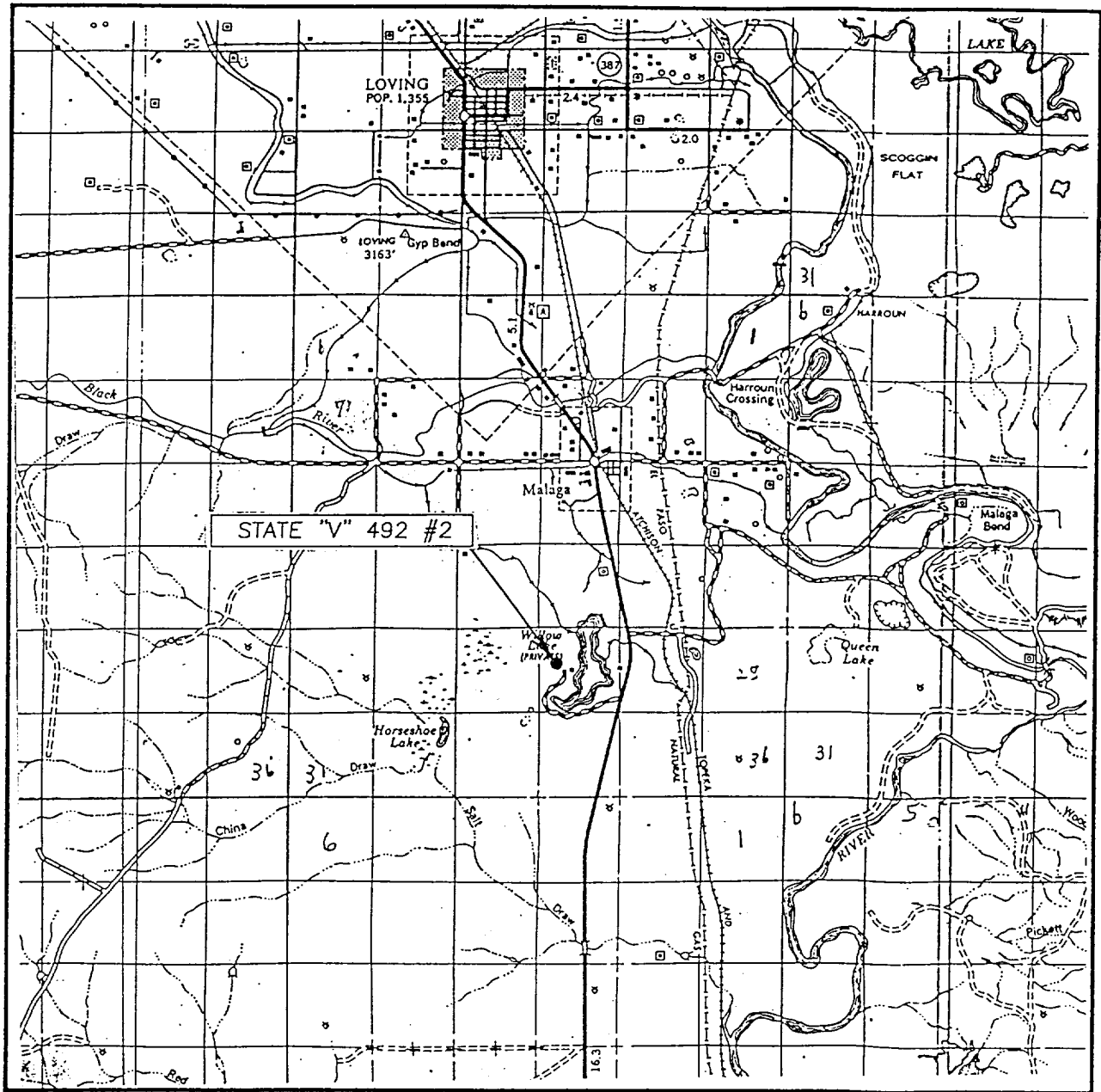
I hereby certify that the well location shown on this plat was plotted from field notes of actual surveys made by me or under my supervision, and that the same is true and correct to the best of my belief.

SEPTEMBER 10, 2002

Date Surveyed
Signature & Seal of Professional Surveyor
Ronald J. Ebdson
09/12/02
06211.0675

Certificate No. RONALD J. EBDSON 3239
GARY EBDSON 12641

VICINITY MAP



SCALE: 1" = 2 MILES

SEC. 27 TWP. 24-S RGE. 28-E

SURVEY N.M.P.M.

COUNTY EDDY

DESCRIPTION 800' FNL & 2300' FWL

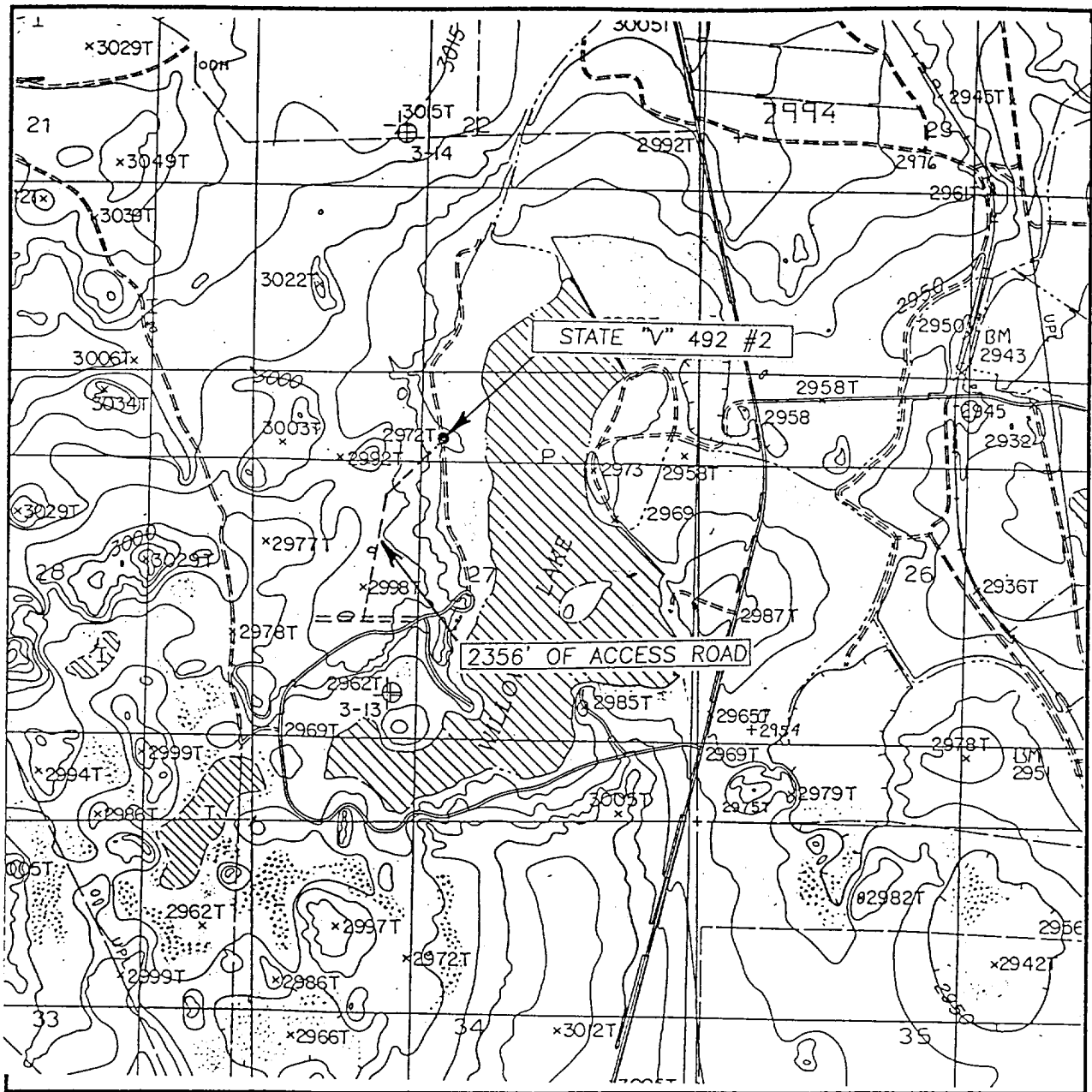
ELEVATION 2986'

OPERATOR POGO PRODUCING COMPANY

LEASE STATE "V" 492

JOHN WEST SURVEYING
HOBBS, NEW MEXICO
(505) 393-3117

LOCATION VERIFICATION MAP



SCALE: 1" = 2000'

CONTOUR INTERVAL: 10'
MALAGA, N.M.

SEC. 27 TWP. 24-S RGE. 28-E

SURVEY _____ N.M.P.M.

COUNTY _____ EDDY

DESCRIPTION 800' FNL & 2300' FWL

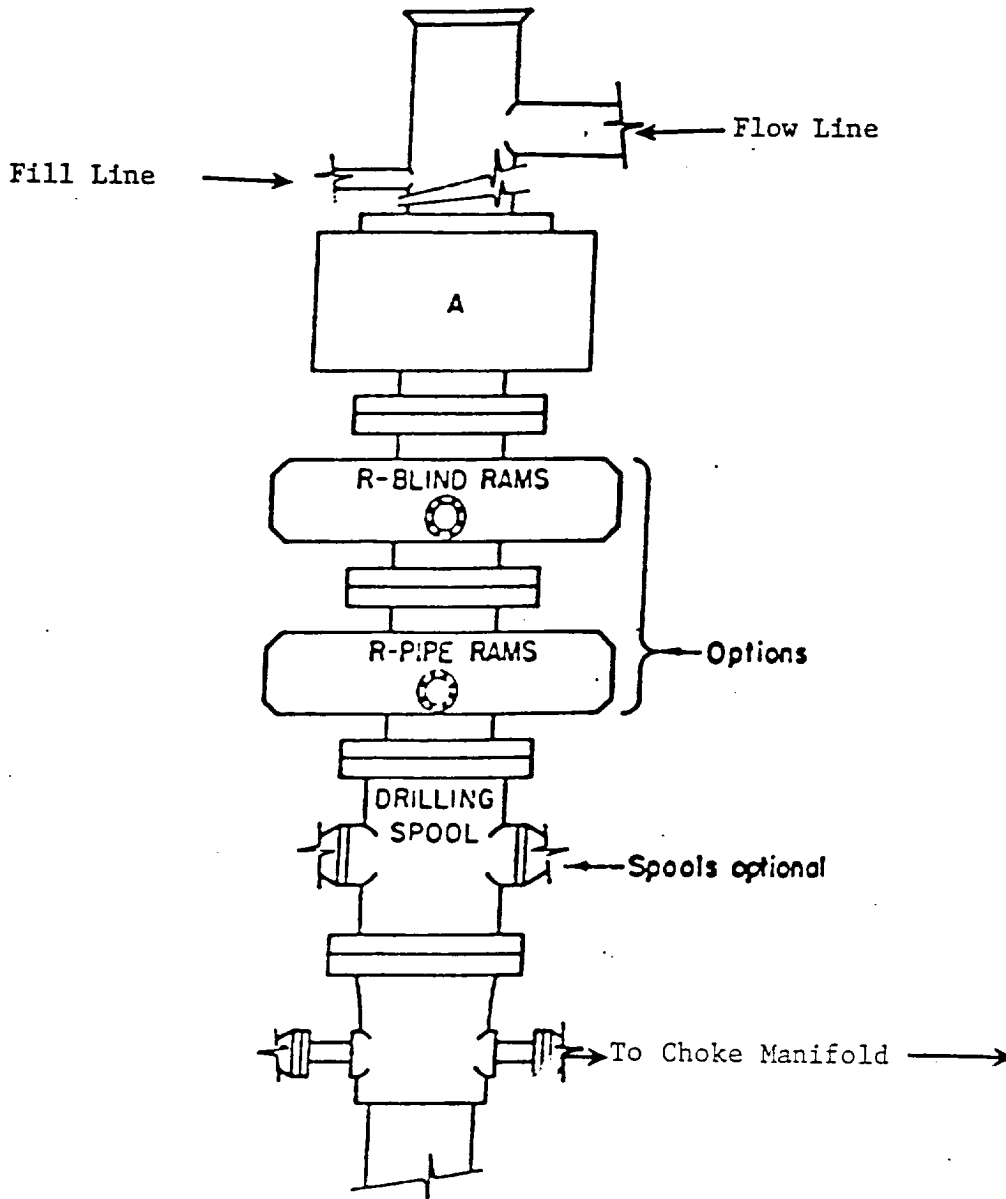
ELEVATION 2986'

OPERATOR POGO PRODUCING COMPANY

LEASE _____ STATE "V" 492

U.S.G.S. TOPOGRAPHIC MAP
MALAGA, N.M.

JOHN WEST SURVEYING
HOBBS, NEW MEXICO
(505) 393-3117



ARRANGEMENT SRRA

1500 Series
 5000# Working Pressure

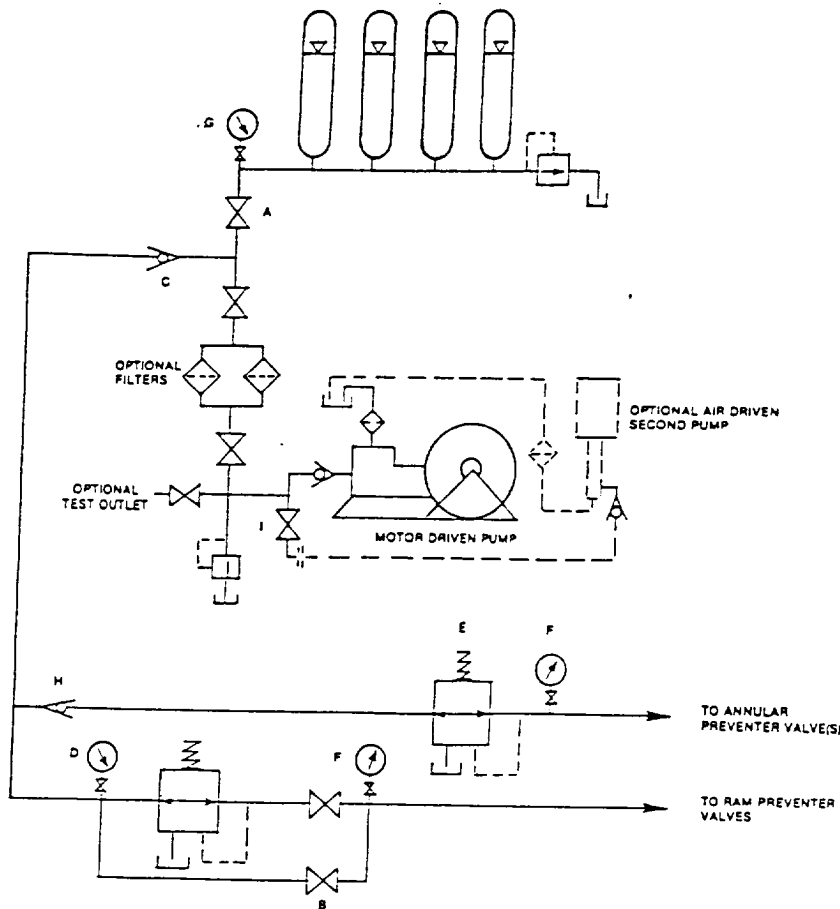


FIGURE K6-1. The schematic sketch of an accumulator system shows required and optional components.

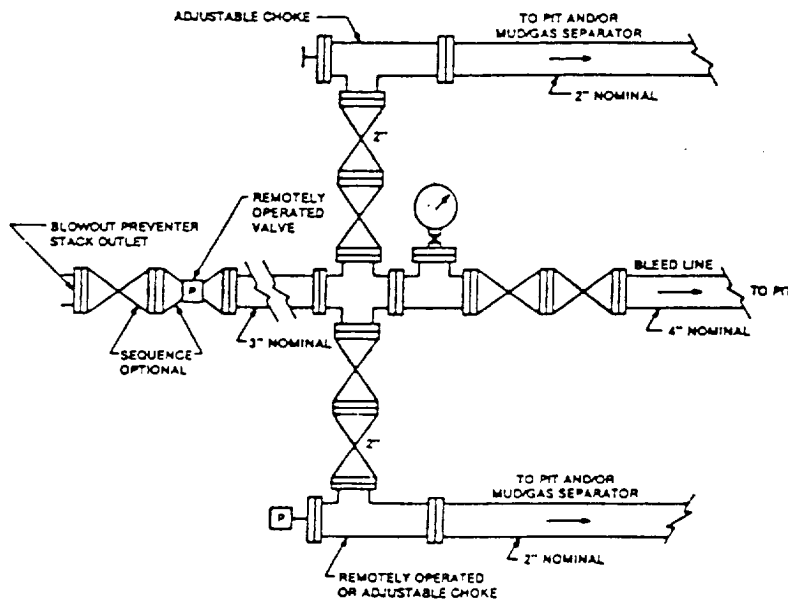


FIGURE K4-2. Typical choke manifold assembly for 5M rated working pressure service — surface installation.

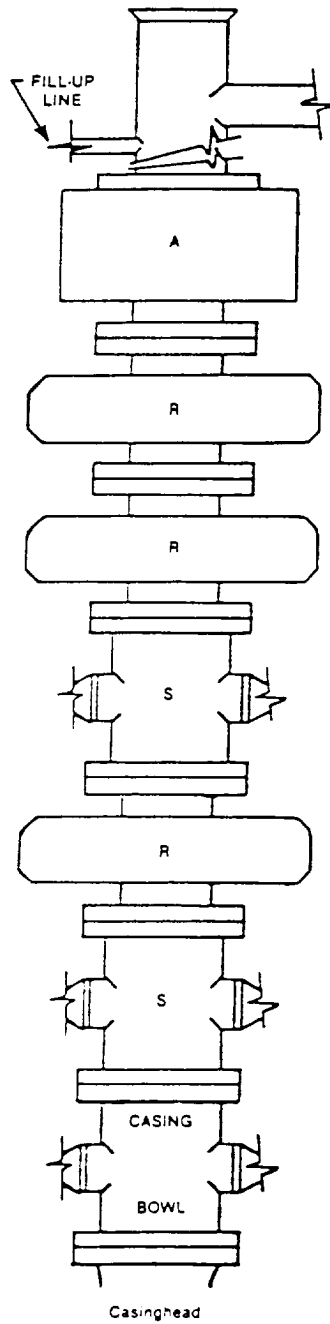


FIGURE K1-3. Recommended IADC Class 10 BOP stack arrangement SRSRRA, 10,000 psi WP. Lower drilling spool is optional with outlets on lower ram. Annular preventers 10,000 psi.

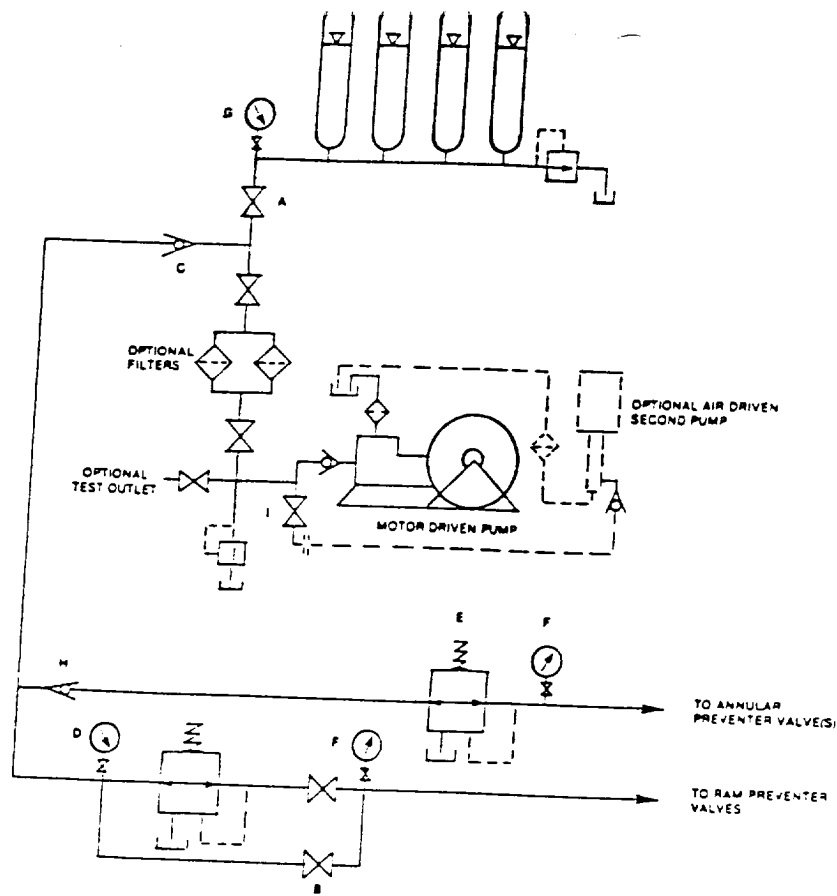


FIGURE K6-1. The schematic sketch of an accumulator system shows required and optional components.

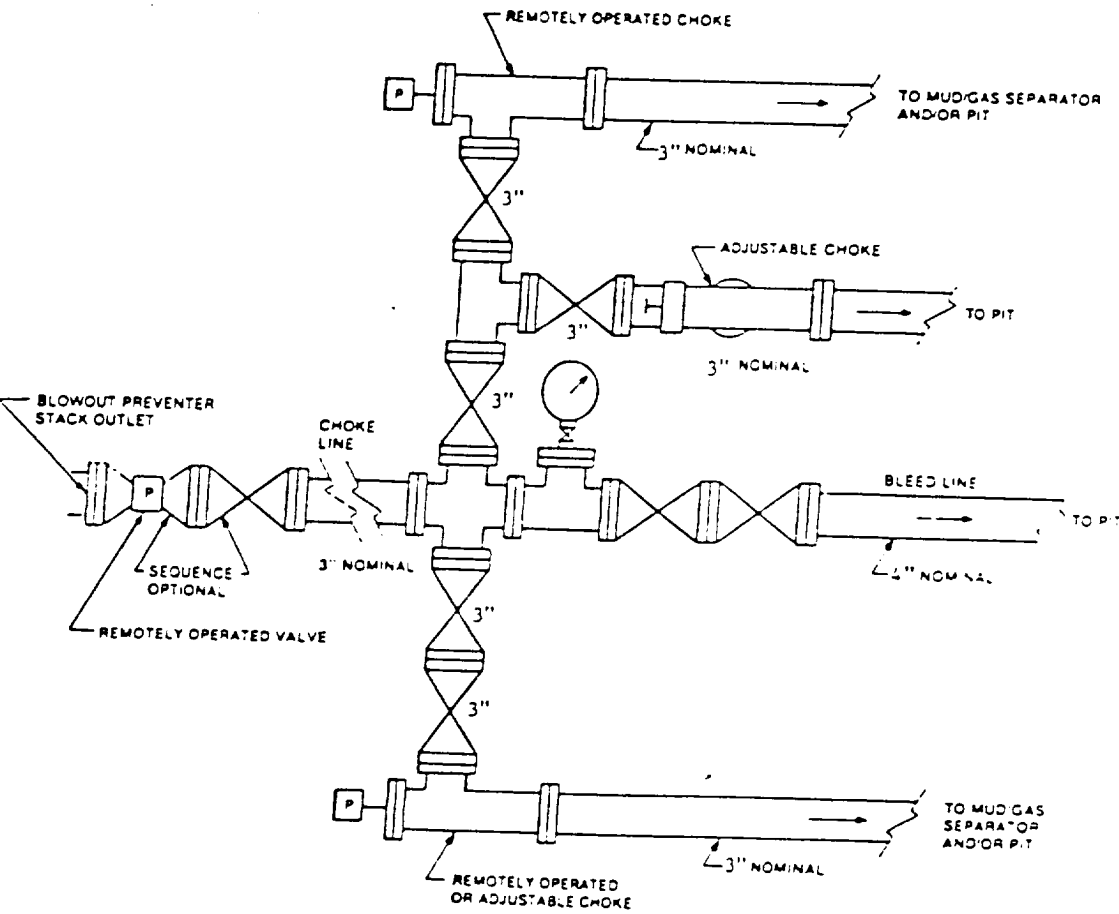


FIGURE K4-3. Typical choke manifold assembly for 10M and 15M rated working pressure service — surface installation.