

UNITED STATES
DEPARTMENT OF THE INTERIOR
GEOLOGICAL SURVEY

APPLICATION FOR PERMIT TO DRILL, DEEPEN, OR PLUG BACK

1a. TYPE OF WORK
 DRILL DEEPEN PLUG BACK

b. TYPE OF WELL
 OIL WELL GAS WELL OTHER

2. NAME OF OPERATOR
 Samaria Oil Corporation

3. ADDRESS OF OPERATOR
 2207 Wilc Building, Midland, Texas 79701

4. LOCATION OF WELL (Report location clearly and in accordance with any State requirements.)
 At surface
 1900' F3L and 1675' F5L, Sec. 9, T-26-S, R-23-E

At proposed prod. zone
 SAME

14. DISTANCE IN MILES AND DIRECTION FROM NEAREST TOWN OR POST OFFICE*
 16 miles southwest of White Hill

15. DISTANCE FROM PROPOSED* LOCATION TO NEAREST PROPERTY OR LEASE LINE, FT. (Also to nearest drlg. line, if any)
 1675'

16. NO. OF ACRES IN LEASE
 540

17. NO. OF ACRES ASSIGNED TO THIS WELL
 320

18. DISTANCE FROM PROPOSED LOCATION* TO NEAREST WELL, DRILLING COMPLETED, OR APPLIED FOR, ON THIS LEASE, FT.
 --

19. PROPOSED DEPTH
 6200'

20. ROTARY OR CABLE TOOLS
 Rotary

21. ELEVATIONS (Show whether DF, RT, GR, etc.)
 5200' H.L.

22. APPROX. DATE WORK WILL START*
 Upon approval

5. LEASE DESIGNATION AND SERIAL NO.
 M 5476 L-806

6. IF INDIAN, ALLOTTEE OR TRIBE NAME

7. UNIT AGREEMENT NAME

8. FARM OR LEASE NAME
 Monsanto-Federal

9. WELL NO.
 No. 1

10. FIELD AND POOL, OR WILDCAT
 Wildcat

11. SEC., T., R., M., OR BLK. AND SURVEY OR AREA
 Sec. 9, T-26-S, R-23-E

12. COUNTY OR PARISH
 Eddy

13. STATE
 New Mexico

PROPOSED CASING AND CEMENTING PROGRAM

SIZE OF HOLE	SIZE OF CASING	WEIGHT PER FOOT	SETTING DEPTH	QUANTITY OF CEMENT
12 1/2"	12 1/8"	11.3	700'	100 BX.
7 7/8"	7 1/2"	11.3	6200'	175 BX.

Plan to drill 12 1/2" hole to 700', run 12 1/8" casing and cement to surface. Drill 7 7/8" hole to 6200', run 7 1/2" casing and cement with 175 sacks. Also 12 hrs. and test to 1000'. (Bore may be run on any formation indicating production during this stage of drilling.)

If production is indicated, will complete in production zone(s) according to Rules and Regulations of New Mexico Oil Conservation Commission.

All pipe-setting and cementing operations will be conducted according to requirements of the proper authorities.

IN ABOVE SPACE DESCRIBE PROPOSED PROGRAM: If proposal is to deepen or plug back, give data on present productive zone and proposed new productive zone. If proposal is to drill or deepen directionally, give pertinent data on subsurface locations and measured and true vertical depths. Give blowout preventer program, if any.

24. William S. Aguen
 SIGNED William S. Aguen TITLE Production Superintendent DATE 3-5-73

(This space for Federal or State office use)

PERMIT NO. _____ APPROVAL DATE Subject to Approval of Commission

APPROVED BY _____ TITLE _____ DATE _____

CONDITIONS OF APPROVAL, IF ANY:

APPROVED
 MARCH 1973
 L. BECKMAN
 ACTING DISTRICT ENGINEER
 THIS APPROVAL IS NOT COMPLETED UNTIL THE PERMIT IS CIRCULATED

SEE INSTRUCTIONS ON REVERSE SIDE
 JUN 18 1973
 BE CIRCULATED

Subject to Approval of Commission
 approval date
 DATE

Instructions

General: This form is designed for submitting proposals to perform certain well operations, as indicated, on all types of lands and leases for appropriate action by either a Federal or a State agency, or both, pursuant to applicable Federal and/or State laws and regulations. Any necessary special instructions concerning the use of this form and the number of copies to be submitted, particularly with regard to local, area, or regional procedures and practices, either are shown below or will be issued by, or may be obtained from, the local Federal and/or State office.

Item 1: If the proposal is to redrill to the same reservoir at a different subsurface location or to a new reservoir, use this form with appropriate notations. Consult applicable State or Federal regulations concerning subsequent work proposals or reports on the well.

Item 4: If there are no applicable State requirements, locations on Federal or Indian land should be described in accordance with Federal requirements. Consult local State or Federal office for specific instructions.

Item 14: Needed only when location of well cannot readily be found by road from the land or lease description. A plat, or plats, separate or on this reverse side, showing the roads to, and the surveyed location of, the well, and any other required information, should be furnished when required by Federal or State agency offices.

Items 15 and 18: If well is to be, or has been directionally drilled, give distances for subsurface location of hole in any present or objective production zone.

Item 22: Consult applicable Federal or State regulations, or appropriate officials, concerning approval of the proposal before operations are started.

NEW MEXICO OIL CONSERVATION COMMISSION
WELL LOCATION AND ACREAGE DEDICATION PLAT

Form C-102
Supersedes C-128
Effective 1-1-65

All distances must be from the outer boundaries of the Section

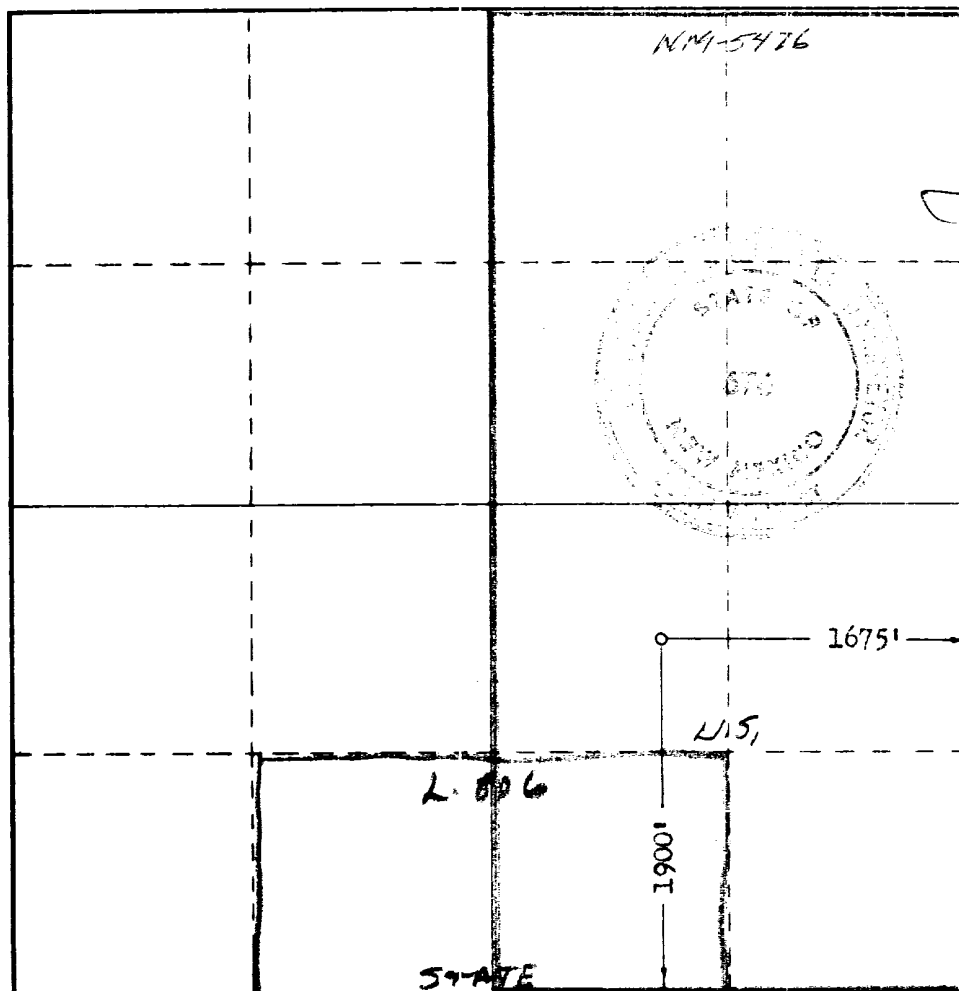
Operator SAMEDAN OIL CORP.		Lease Monsanta-Federal			Well No. 1
Unit Letter J	Section 9	Township 26 South	Range 23 East	County Eddy	
Actual Footage Location of Well: 1675 feet from the east line and 1900 feet from the south line					
Ground Level Elev. 4338	Producing Formation Morrow		Foot Wildcat	Dedicated Acreage: 320 Acres	

1. Outline the acreage dedicated to the subject well by colored pencil or hachure marks on the plat below.
2. If more than one lease is dedicated to the well, outline each and identify the ownership thereof (both as to working interest and royalty).
3. If more than one lease of different ownership is dedicated to the well, have the interests of all owners been consolidated by communitization, unitization, force-pooling, etc?

Yes No If answer is "yes," type of consolidation _____

If answer is "no," list the owners and tract descriptions which have actually been consolidated. (Use reverse side of this form if necessary.) Will be unitized if commercial production is established.

No allowable will be assigned to the well until all interests have been consolidated (by communitization, unitization, forced-pooling, or otherwise) or until a non-standard unit, eliminating such interests, has been approved by the Commission.



CERTIFICATION

I hereby certify that the information contained herein is true and complete to the best of my knowledge and belief.

William S. McCuen

Name
William S. McCuen
Position
Production Superintendent
Company
Samedan Oil Corporation
Date
March 6, 1973

RECEIVED location shown on this plat was plotted from field notes of August 1973 made by me or under my supervision, and that the same is true and correct to the best of my knowledge and belief.

Date Surveyed
Feb. 28, 1973
Registered Professional Engineer and/or Land Surveyor

John W. West
Certificate No. **676**



SAMEDAN OIL CORPORATION
DEVELOPMENT PLAN FOR SURFACE USE

Monsanto Federal No. 1
1900' FSL & 1675' TEL
Sec. 9, T-26-S, R-23-E
Eddy County, New Mexico

The following is a discussion of the pertinent information concerning any possible effect which Samedan's proposed drilling of the above well may have on the environment or surface condition of the southeast quarter (SE/4) of Section 9, T-26-S, R-23-E, and surrounding acreage.

Item 1: Attached as a portion of the "Development Plan" are plats, labeled Plat No. 1 and Plat No. 2, showing the existing ranch and county roads to be used in reaching the proposed location, the presence of all surface water supplies within one (1) mile, and the proposed layout of the drilling pad, rig, and mud pits to be used in drilling the above well. These items are discussed further below.

Item 2: Drilling Pad and Pit Location - The drilling pad and reserve pits will be constructed as shown on Plat No. 1. The location will be cleared and leveled and used in its natural condition without caliche. The reserve pit will be lined with a suitable plastic or rubber lining to prevent the loss of drilling fluids by seepage into the surface.

Item 3: Roads - Access to the proposed location will be gained by use of the existing county roads and unimproved ranch roads. The unimproved ranch roads will be graded and leveled sufficient to provide access to vehicular traffic, with minor improvement only as required.

Item 4: Producing Facilities and Flowlines - In the event that the proposed well is completed as a producer, necessary surface producing facilities will be installed on the drilling pad at the well. Only enough flowline would be required to connect the well to such facilities.

Item 5: Drilling Water Supply - Drilling water will be obtained through arrangements with the surface owner (or lessee on Federal land) and will be taken from the existing surface water supplies or wells within approximately one (1) mile of the proposed location.

Item 6: Waste Disposal - Wastes (such as drilling mud sacks, barrels, containers, scrap material, and junk) resulting from the drilling of this well will be disposed of by hauling to an approved dumping site.

Item 7: Disposal of Brine and Produced Salt Water - Waste brine and produced salt water will be collected in metal storage tanks and trucked to an approved disposal well.

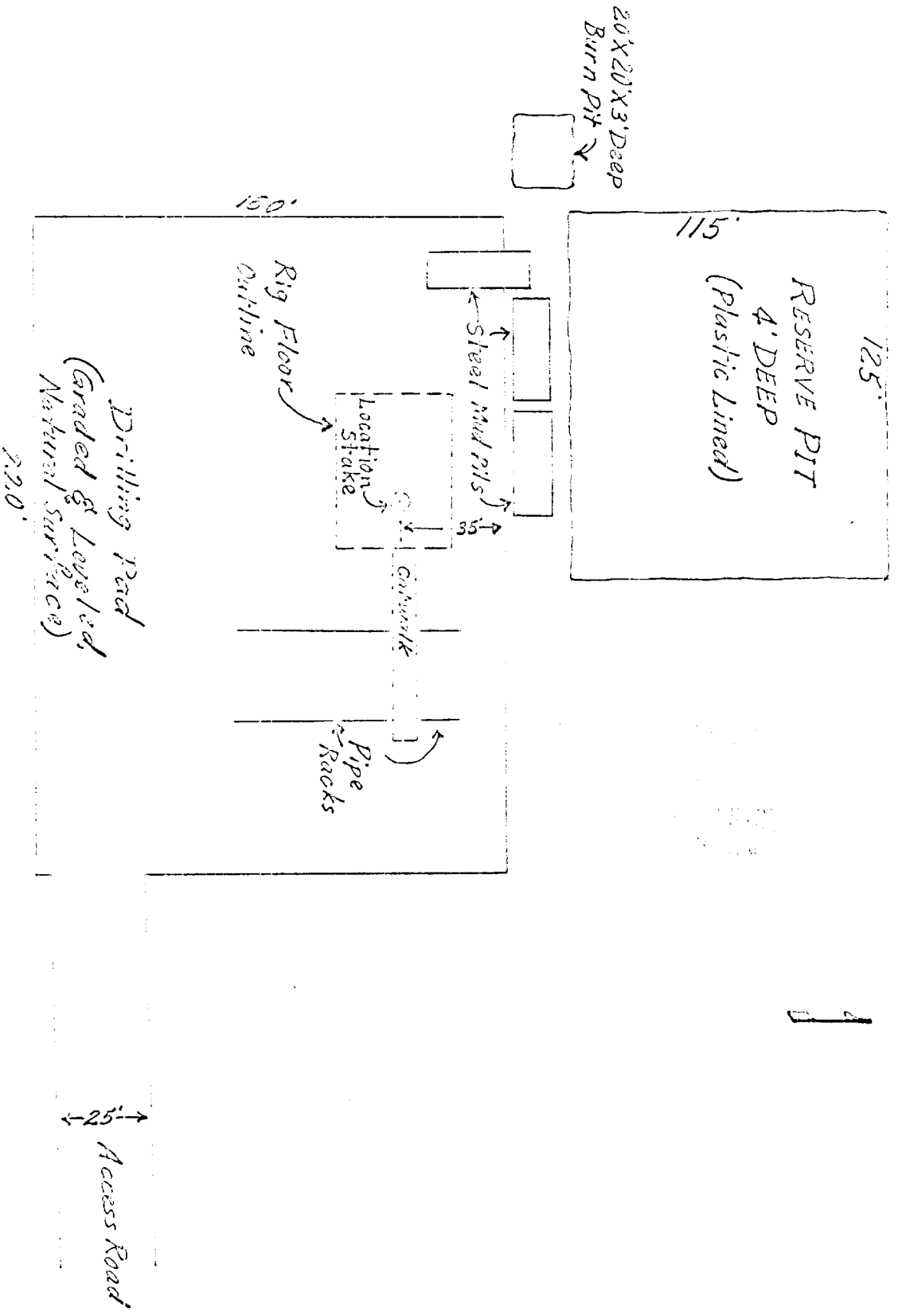
Item 8: Restoration of Surface - Following completion of the well, the mud pits will be filled and leveled consistent with the general terrain, and every effort will be made to leave the surface as undisturbed as possible.

Item 9: Blowout Prevention and Drilling Mud Program - See copy of attached proposed drilling program

RECEIVED

MAR - 3 1973

D. S. OIL COMPANY
ARTIST, NEW MEXICO



Suncoast Oil Corporation
 Permit No. 14-11991 No. 1
 Well No. 21983 R-234
 Field Control No. 1400
 Scale: 1" = 100'

PLAN NO. 1

SAMEDAN OIL CORPORATION
WELL PROGRAM SHEET

WELL: Monsanto-Federal No. 1

FIELD: Wildcat

OPERATOR: Samedan Oil Corporation

ESTIMATED

TOTAL DEPTH: 8200'

OBJECTIVE: Morrow (gas)

1. LOCATION: SE/4, Sec. 9, T-26-S, R-23-E, Eddy County, New Mexico

2. ELEVATION: To be furnished later

3. MEASUREMENTS:

All measurements will be taken from the Kelly Bushing. The permanent datum will be the bradenhead flange. The distance from the bradenhead flange will be recorded on the logs and drilling report. An instrument will be utilized to record drilling time.

4. HOLE SIZE: 12 1/4" - 0 to 750'
7 7/8" - 750 to 8200'

5. HOLE DEVIATION: Maximum hole deviation will be 5°, limited to 1/2° per 100' interval. Deviation surveys will be run at least once each 500'. The results of each survey will be recorded on the Daily Drilling Report.

6. ESTIMATED FORMATION TOPS:

Delaware 450'

Bone Springs 3700'

Wolfcamp 6000'

Strawn 6600'

Atoka 7100'

Morrow Lime 7400'

Lower Morrow Sand 7700'

RECEIVED

MAR 3 1973

OFFICE OF THE
SPECIAL AGENT IN CHARGE

7. DRILLING SAMPLES: Save One (1) set of drilling samples from 750' to T.D. Drilling time to be recorded by Geolograph. Manually recorded 10' drilling time to be recorded from 750' to 6000', and one (1) ft. drilling time to be recorded from 6000' to T.D. (original and one copy)

8. BLOWOUT PREVENTERS:

Dual Ram, 3000 psi W.P. hydraulically operated preventers to be installed on 8 5/8" casing prior to drilling plug, equipped to Samedan's specifications

ALYDIA OR OTHER TYPE AVAILABLE PREVENTERS

9. DRILLING MUD:

0 to 750' Fresh water and gel, with sufficient viscosity to clean hole. If lost circulation occurs, drill ahead without returns using water. It may be necessary to pump a 100 to 200 bbl. slug of high viscosity mud to clean hole prior to running 8 5/8" casing

750' to 6000' Fresh water and lime, circulating through the reserve pit. If water flows are encountered, raise weight to 8.7 to 8.8 ppg by adding brine.

6000' to T.D. At 6000', mud up using Milchem's XC polymer system having the following properties: Weight 8.7 to 8.8 ppg; Water Loss 10-15 cc; viscosity 31-33. Stay in steel pits after mudding up. It may be necessary to use a fine screen shale shaker or desilter to remove suspended drill solids in system. Prior to penetrating the Morrow Zone (at 7000'), add Avert-a-Bloc to system to prevent the Morrow Sands

10. CASING PROGRAM:
(NOTE: May be necessary to set 60' of 20" conductor pipe)

Surface
7500' 8 5/8" O.D. 24#/ft J-55 ST & C

Intermediate

NONE

Oil String

8000' 4 1/2" O.D. 11.6#, 10.5#, and 9.5# J-55 ST & C

11. CEMENTING:

Surface Casing

Run 8 5/8" csg. with Texas Pattern guide shoe, baffle plate, 3 centralizers. Use one top wooden plug. Cement with 300 sks. live-water type cement plus 100 sks. of Class "C" cement with 2% CaCl₂. NOTE: If loss circulation is present, cement baskets will be run on 8 5/8" csg. and it will be necessary to cement through 1" pipe down annulus.

Intermediate

NONE

Oil String

Oil string and cementing program will be developed depending on results of open-hole test and log evaluations.

12. LOGGING:

2 - open-hole logs will be run after reaching T.D.

1 - Gamma Ray BNC Acoustic Log

1 - Dual Induction Lateralog or Microlog

13. FORMATION TESTING:

Four possible DSTs, in following zones: Wolfcamp, Stawn, Atoka, and Lower Morrow

14. CORING:

NONE

15. SPECIAL SURVEYS:

Mid logging unit will be used from 5500' to T.D.

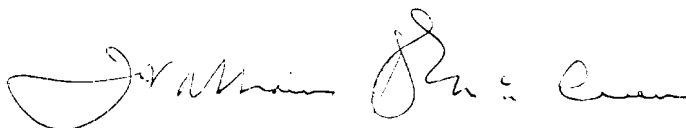
16. COMPLETION PROGRAM:

To be furnished as required

RECEIVED

MAR - 3 1973

U. S. GOVERNMENT PRINTING OFFICE



~~XXXXXXXXXXXX~~ William S. McCuen
Division Production Superintendent

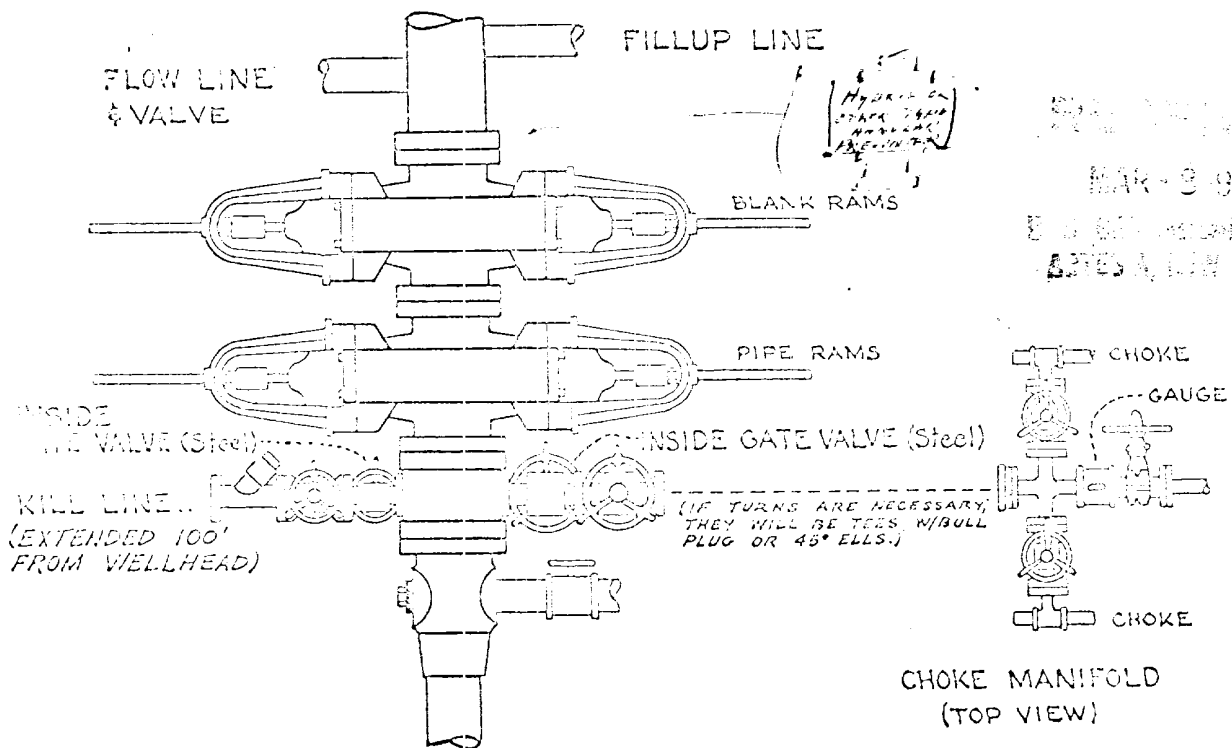
Bob D. Fritzell
60300, New Mexico
505-393-2512 (Office)
505-392-6880 (Home)
505-393-7266 (Mobil)

William S. McCuen
Midland, Texas
915-683-5536 (Office)
915-694-7342 (Home)

David E. Holley
Midland, Texas
915-683-5536 (Office)
915-684-6970 (Home)

Cliff W. Matthews
Midland, Texas
915-683-5536 (Off.)
915-682-0354 (Res.)

BLOWOUT PREVENTER
FOR
MEDIUM PRESSURE WELLS
(900 SERIES MIN.)



REVISIONS
MAR-9-1973
E. J. BRADEN, SUPERVISOR
ARTS & TECH. SERVICE

NOTE: Choke manifold to be either
3" or 4".
To be 900 Series, Minimum.

REQUIREMENTS

1. Kill Line and Choke Manifold maybe connected to Braden Head at Area Supervisor's discretion in event of low substructure.
2. Hydraulic closing unit required.
3. Steel lines from BOP to closing unit required.