

UNITED STATES
DEPARTMENT OF THE INTERIOR
GEOLOGICAL SURVEY

30-015-21014

5. LEASE DESIGNATION AND SERIAL NO.
0459053

6. IF INDIAN, ALLOTTEE OR TRIBE NAME

7. UNIT AGREEMENT NAME

8. FARM OR LEASE NAME
Red Bluff Federal

9. WELL NO.
#1

10. FIELD AND POOL, OR WILDCAT
Wildcat

11. SEC., T., R., M., OR BLK. AND SURVEY OR AREA
Sec. 27, T-26S, R-29E

12. COUNTY OR PARISH
Eddy

13. STATE
N.M.

APPLICATION FOR PERMIT TO DRILL, DEEPEN, OR PLUG BACK

1a. TYPE OF WORK
DRILL DEEPEN PLUG BACK

b. TYPE OF WELL
OIL WELL GAS WELL OTHER
SINGLE ZONE MULTIPLE ZONE

2. NAME OF OPERATOR
Hanson Oil Corporation

3. ADDRESS OF OPERATOR
P.O. Box 1515-Roswell, New Mexico 88201

4. LOCATION OF WELL (Report location clearly and in accordance with any State requirements.)
At surface SW/4 of NE/4 Sec. 27, T-26-S, R-29-E
1980' FEL & 1980' FNL
At proposed prod. zone

RECEIVED
NOV 12 1973

14. DISTANCE IN MILES AND DIRECTION FROM NEAREST TOWN OR POST OFFICE*
16 miles from Orla, Texas O.C.C.

15. DISTANCE FROM PROPOSED* LOCATION TO NEAREST PROPERTY OR LEASE LINE, FT. (Also to nearest drig. unit line, if any)
660'

16. NO. OF ACRES, OFFICE, OR P&A, OFFICE OF ACRES ASSIGNED TO THIS WELL
1328

40

18. DISTANCE FROM PROPOSED LOCATION* TO NEAREST WELL, DRILLING, COMPLETED, OR APPLIED FOR, ON THIS LEASE, FT.
None

19. PROPOSED DEPTH
3100'

20. ROTARY OR CABLE TOOLS
Cable Tools

21. ELEVATIONS (Show whether DF, RT, GR, etc.)
2876 G.L.

22. APPROX. DATE WORK WILL START*
Nov. 20, 1973

23. PROPOSED CASING AND CEMENTING PROGRAM

SIZE OF HOLE	SIZE OF CASING	WEIGHT PER FOOT	SETTING DEPTH	QUANTITY OF CEMENT
24"	20"	91#	350'	550 sx (circulate)
8"	5-1/2"	15.5#	3000'	250 sx

It is proposed to drill a 3100' Delaware test with cable tools following the above described casing program. Water needed for drilling and cementing operations would be hauled to well. Well control head would be used during drilling and completion of well. After completion of well or P&A, surface will be restored to its natural state. All cuttings, garbage trash, etc. from drilling of well will be hauled to Artesia yard. Location presently has rolling sandy hills with sagebrush.

IN ABOVE SPACE DESCRIBE PROPOSED PROGRAM: If proposal is to deepen or plug back, give data on present productive zone and proposed new productive zone. If proposal is to drill or deepen directionally, give pertinent data on subsurface locations and measured and true vertical depths. Give blowout preventer program, if any.

24. SIGNED Ray Mills TITLE Vice President-Prod. DATE 11-8-73

(This space for Federal or State office use)

PERMIT NO. _____ APPROVAL DATE NOV 9 1973

APPROVED BY [Signature] TITLE DISTRICT ENGINEER DATE _____

DECLARED WATER BASIN
CEMENT BEHIND 20"
CASING MUST BE CIRCULATED.

THIS APPROVAL IS RESCINDED IF OPERATIONS ARE NOT COMMENCED WITHIN 3 MONTHS.
6/12-1-73

*See Instructions On Reverse Side

MEXICO OIL CONSERVATION COMMISS
WELL LOCATION AND ACREAGE DEDICATION PLAT

Form C-152
Supersedes L-128
Effective 1/1/68

All distances must be from the outer boundaries of the Section.

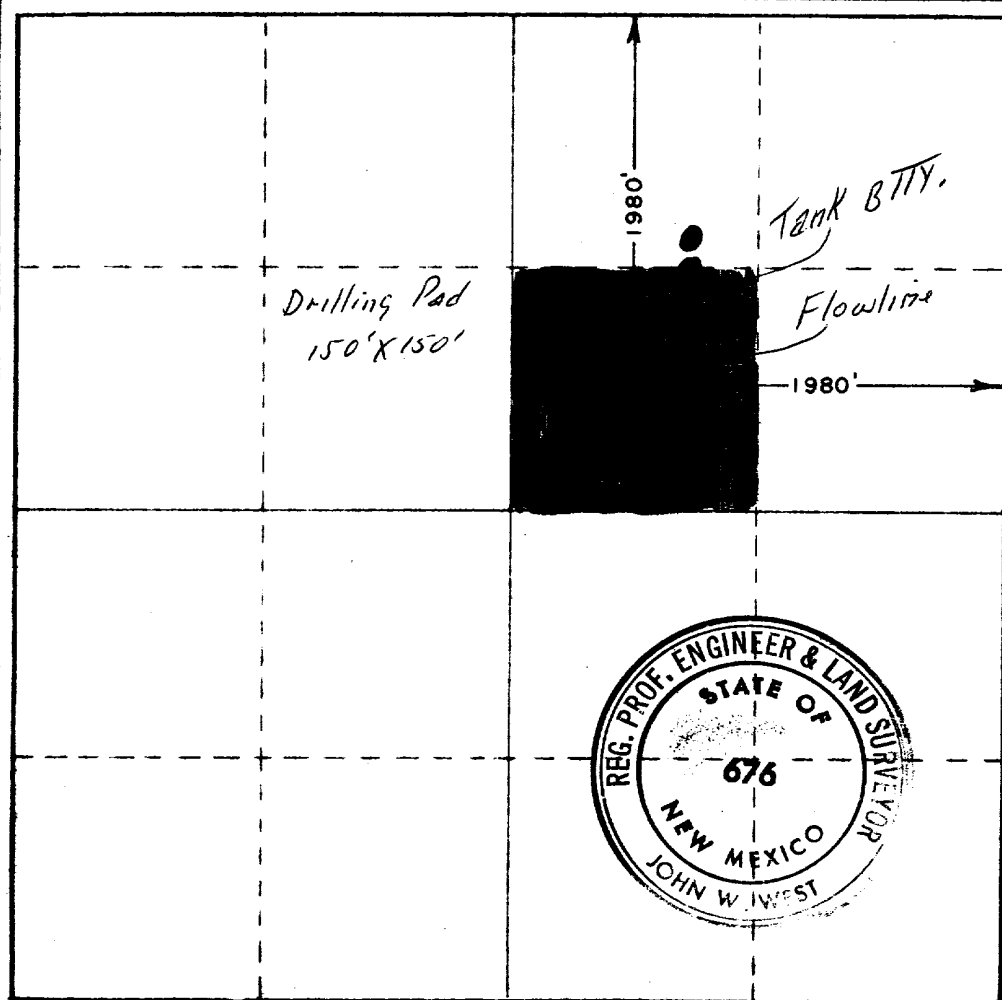
Operator HANSON OIL CORP.			Lease RED BLUFF FEDERAL			Well No. 1
Unit Letter G	Section 27	Township 26 SOUTH	Range 29 EAST	County EDDY		
Actual Footage Location of Well: 1980 feet from the NORTH line and 1980 feet from the EAST line						
Ground Level Elev. 2876.3	Producing Formation <i>Del</i>		Pool <i>McC and Pecos Del.</i>	Dedicated Acreage 40		

1. Outline the acreage dedicated to the subject well by colored pencil or hachure marks on the plat below.
2. If more than one lease is dedicated to the well, outline each and identify the ownership thereof (both as to working interest and royalty).
3. If more than one lease of different ownership is dedicated to the well, have the interests of all owners been consolidated by communitization, unitization, force-pooling, etc?

Yes No If answer is "yes," type of consolidation _____

If answer is "no," list the owners and tract descriptions which have actually been consolidated. (Use reverse side of this form if necessary.) _____

No allowable will be assigned to the well until all interests have been consolidated (by communitization, unitization, forced-pooling, or otherwise) or until a non-standard unit, eliminating such interests, has been approved by the Commission.



CERTIFICATION

I hereby certify that the information contained herein is true and complete to the best of my knowledge and belief

Ray Wilts

Name
Vice President - Production
Position
Hanson Oil Corporation
Company
November 8, 1973
Date

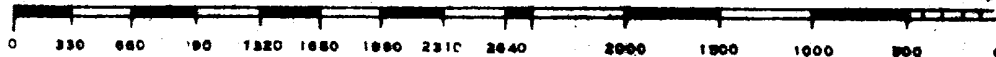
I hereby certify that the well location shown on this plat was plotted from field notes of actual surveys made by me or under my supervision, and that the same is true and correct to the best of my knowledge and belief.

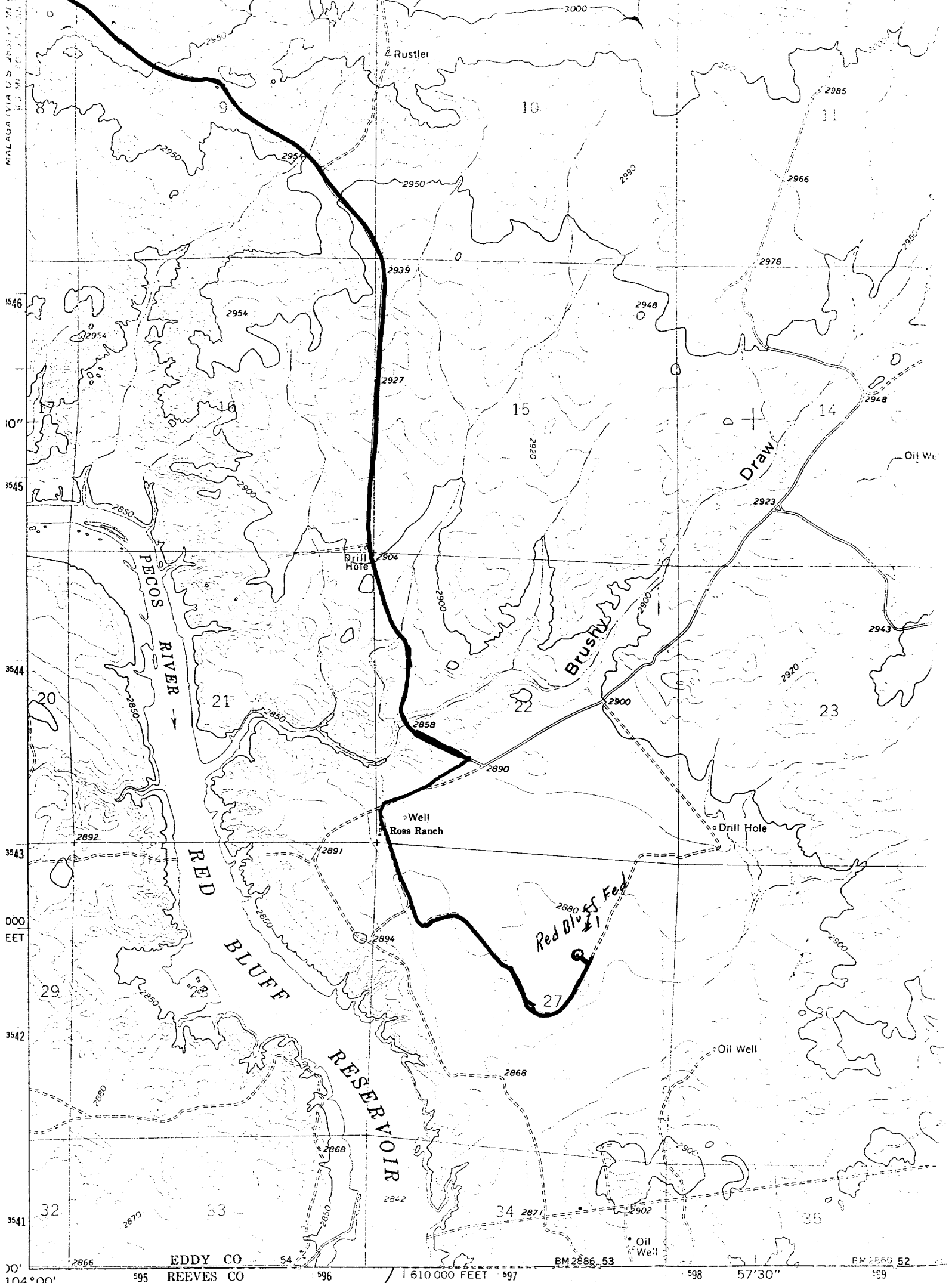
Date Surveyed
NOVEMBER 6, 1973

Registered Professional Engineer and/or Land Surveyor

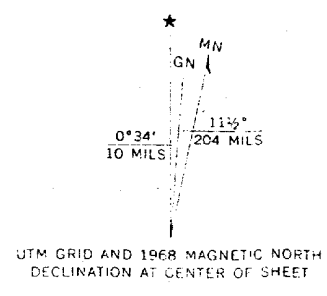
John W. West
Certificate No.

676

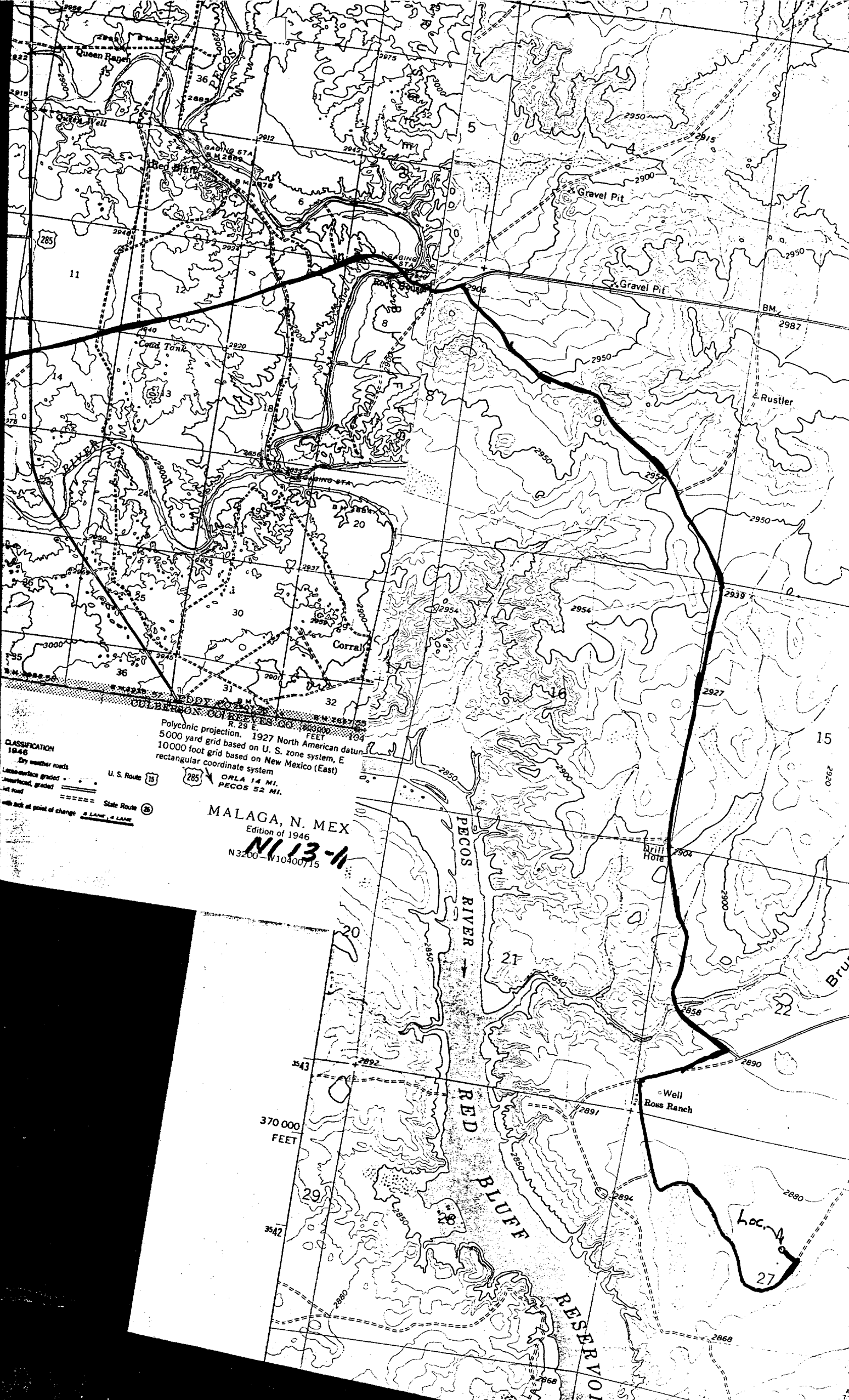




Mapped, edited, and published by the Geological Survey
 Control by USGS and USC&GS
 Topography by photogrammetric methods from aerial
 photographs taken 1967. Field checked 1968
 Polyconic projection. 1927 North American datum
 10,000-foot grid based on New Mexico coordinate system,
 east zone
 1000-meter Universal Transverse Mercator grid ticks,
 zone 13, shown in blue
 Fine red dashed lines indicate selected fence lines



FOR SALE BY U.S. GEOLOGICAL SURVEY



CLASSIFICATION
1946

Dry weather roads
Low-surface graded
Asphalt, graded
4th road
with tick at point of change

U.S. Route 15
State Route 2

with tick at point of change

Polyconic projection. 1927 North American datum.
5000 yard grid based on U. S. zone system, E
10000 foot grid based on New Mexico (East)
rectangular coordinate system

ORLA 14 MI.
PECOS 52 MI.

MALAGA, N. MEX
Edition of 1946
NI 13-1
N3200-W10300715

370 000
FEET

3542

RESERVOIR

PECOS RIVER

RED BLUFF

Loc. 27

Well
Rous Ranch

Brill
Hotel

Gravel Pit

Gravel Pit

BM.

2987

Rustler

2950

2939

2927

15

Bruc

3000

2858

2890

2860

2868

2968

2850

2850

2850

2850

2850

2850

2850

2850

2850

2850

2850

2850

2850

2850

2850

2850

2850

2850

2850

2850

2850

2850

2850

2850