

| | |
|-----------------|---|
| COPIES RECEIVED | 3 |
| DISTRIBUTION | |
| SANTA FE | 7 |
| FILE | 1 |
| U.S.G.S. | |
| LAND OFFICE | |
| OPERATOR | 1 |

NEW MEXICO OIL CONSERVATION COMMISSION

RECEIVED

Form O-101
Revised 1-1-82

JAN 27 1982

O. C. D.
ARTESIA, OFFICE

| | | |
|------------------------------|--------------------------------|---|
| 5A. Indicate Type of License | STATE <input type="checkbox"/> | FEE <input checked="" type="checkbox"/> |
|------------------------------|--------------------------------|---|

5. Line Oil & Gas Lease No.

APPLICATION FOR PERMIT TO DRILL, DEEPEN, OR PLUG BACK

1a. Type of Work

DRILL ☒

DEEPEN ☐

PLUG BACK ☐

b. Type of Well

OIL WELL ☐

GAS WELL ☐

Stratigraphic
Test Hole

SINGLE ZONE ☐

MULTIPLE ZONE ☐

2. Name of Operator

Cibola Energy Corporation

3. Address of Operator

P.O. Box 1668, Albuquerque, New Mexico 87103

4. Location of Well

UNIT LETTER M LOCATED 660 FEET FROM THE South LINE

AND 660 FEET FROM THE West LINE OF SEC. 27 TWP. 9S RGE. 27E NADP

7. Well Agreement Name

8. Farm or Lease Name

Cibola

9. Well No.

5-M

10. Field and Pool, or Acreage

N/A

12. County

Chaves

13. Proposed Depth

13A. Formation

13. Rotary or C.T.

Rotary

14. Elevations (Show whether D.H., A.H., etc.)

14A. Kind & Status Plug. Bond

Statewide

14B. Drilling Contractor

Harry Bevers

14. Approx. Date Work will start

1-27-82

23.

PROPOSED CASING AND CEMENT PROGRAM

| SIZE OF HOLE | SIZE OF CASING | WEIGHT PER FOOT | SETTING DEPTH | SACKS OF CEMENT | EST. TOP |
|--------------|----------------|-----------------|---------------|-----------------|----------|
| 4 1/2" | N/A | N/A | N/A | N/A | N/A |
| | | | | | |
| | | | | | |

We plan to drill a 4 1/2" hole 20' into Yates formation. A Gamma Ray log will be run to determine the top of the Yates. A suitable cement plug will be pumped into the hole to plug from TD to the top of the water zone. Location will be cleaned and marker set.

THIS WELL IS BEING DRILLED AS A STRATIGRAPHIC TEST-HOLE FOR GEOLOGICAL INFORMATION ONLY AND UNDER NO CIRCUMSTANCES WILL IT BE PRODUCED.

IN ABOVE SPACE DESCRIBE PROPOSED PROGRAM: IF PROPOSAL IS TO DEEPEN OR PLUG BACK, GIVE DATA ON PRESENT PRODUCTIVE ZONE AND PROPOSED NEW PRODUCTIVE ZONE. GIVE BLOWOUT PREVENTER PROGRAM, IF ANY.

I hereby certify that the information above is true and complete to the best of my knowledge and belief.

Signed Ernie Vigil Title Drilling Secretary Date 1-25-82

(This space for State Use)

APPROVED BY Mike Williams TITLE OIL AND GAS INSPECTOR DATE JAN 29 1982

CONDITIONS OF APPROVAL, IF ANY:

NEW MEXICO OIL CONSERVATION COMMISSION
WELL LOCATION AND ACREAGE DEDICATION PLAT

RECEIVED

Form C-102
Supersedes C-128
Effective 1-1-65

FEB 16 1982

All distances must be from the outer boundaries of the Section.

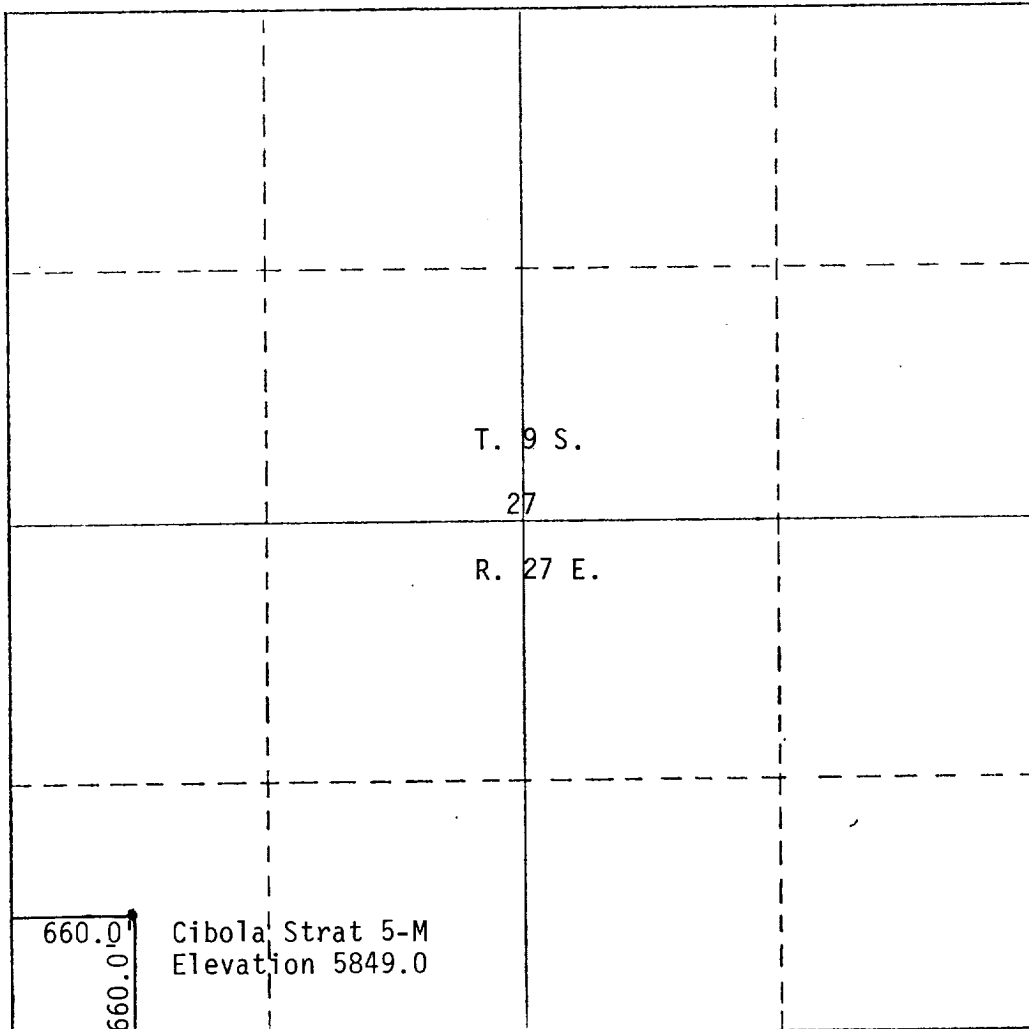
| | | | | | | |
|--|----------------------|----------------------------|--|----------------------------------|-------------------|----------------------------|
| Operator Cibola Energy | | | Lease Cibola Strat Test O. C. D. | | | Well No. Cibola 5-M |
| Unit Letter M | Section 27 | Township 9 South | Range 27 East | County ARTESIA, OFFICE | | |
| Actual Footage Location of Well: 660.0 feet from the south line and 660.0 feet from the west line | | | | | | |
| Ground Level Elev. 5849.0 | Producing Formation | | Pool | | Dedicated Acreage | |

1. Outline the acreage dedicated to the subject well by colored pencil or hatchure marks on the plat below.
2. If more than one lease is dedicated to the well, outline each and identify the ownership thereof (both as to working interest and royalty).
3. If more than one lease of different ownership is dedicated to the well, have the interests of all owners been consolidated by communitization, unitization, force-pooling, etc?

☐ Yes ☐ No If answer is "yes," type of consolidation _____

If answer is "no," list the owners and tract descriptions which have actually been consolidated. (Use reverse side of this form if necessary.) _____

No allowable will be assigned to the well until all interests have been consolidated (by communitization, unitization, forced-pooling, or otherwise) or until a non-standard unit, eliminating such interests, has been approved by the Commission.



CERTIFICATION

I hereby certify that the information contained herein is true and complete to the best of my knowledge and belief.

[Signature]

Name

R. B. Wright

Position

Agent

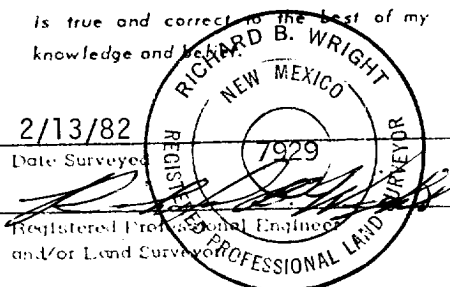
Company

Cibola Energy Corp.

Date

2/13/82

I hereby certify that the well location shown on this plat was plotted from field notes of actual surveys made by me or under my supervision, and that the same is true and correct to the best of my knowledge and belief.



2/13/82

Date Surveyed

Registered Professional Engineer and/or Land Surveyor

Richard B. Wright

Certificate No.

7929

0 330 660 990 1320 1650 1980 2310 2640 2970 3300 3630 3960 4290 4620 4950 5280 5610 5940 6270 6600

NEW MEXICO OIL CONSERVATION COMMISSION
WELL LOCATION AND ACREAGE DEDICATION PLAT

RECEIVED

Form C-127
Supersedes C-128
Effective 1-1-65

All distances must be from the outer boundaries of the Section.

FEB 16 1982

| | | | | |
|----------------------------------|----------------------------|-----------------------------------|-------------------------|-------------------------------|
| Operator Cibola Energy | | Lease Cibola Strat Test | | Well No. Cibola 5-M |
| Section 27 | Township 9 South | Range 27 East | County Chaves | |
| Well Letter M | O. C. D. ARTESIA OFFICE | | | |

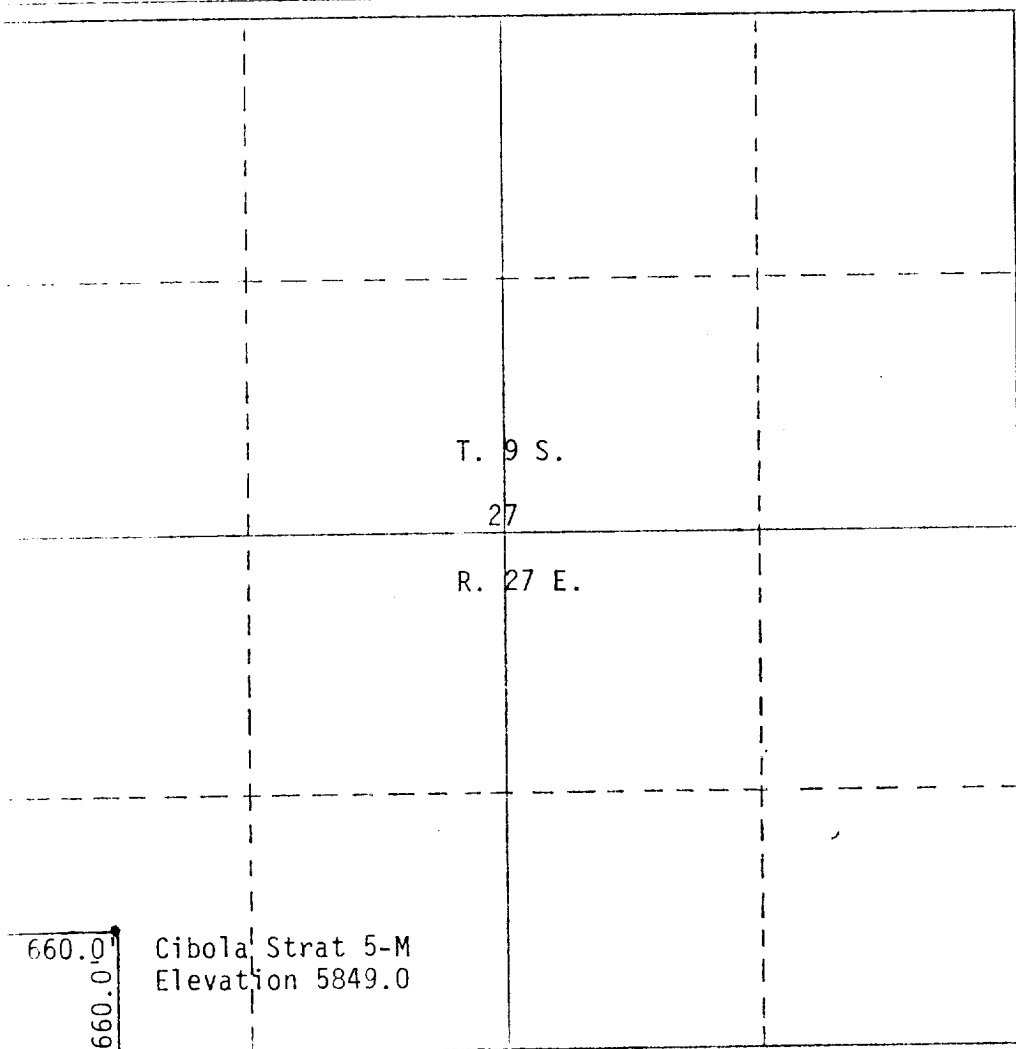
| | | | | |
|---|--|-----------------------|-------------------------------|------------------------------|
| Well Location of Wells: 660.0 feet from the south line and 660.0 feet from the west line | | Well Depth: 5849.0 | Producing Formation: _____ | Designated Acreage: _____ |
|---|--|-----------------------|-------------------------------|------------------------------|

1. Outline the acreage dedicated to the subject well by colored pencil or hatchure marks on the plat below.
2. If more than one lease is dedicated to the well, outline each and identify the ownership thereof (both as to working interest and royalty).
3. If more than one lease of different ownership is dedicated to the well, have the interests of all owners been consolidated by communitization, unitization, force-pooling, etc?

☐ Yes ☐ No If answer is "yes," type of consolidation _____

If answer is "no," list the owners and tract descriptions which have actually been consolidated. (Use reverse side of this form if necessary.) _____

No allowable will be assigned to the well until all interests have been consolidated (by communitization, unitization, forced-pooling, or otherwise) or until a non-standard unit, eliminating such interests, has been approved by the Commission.



CERTIFICATION

I hereby certify that the information contained herein is true and complete to the best of my knowledge and belief.

[Signature]

Name
R. B. Wright

Position
Agent

Company
Cibola Energy Corp.

Date
2/13/82

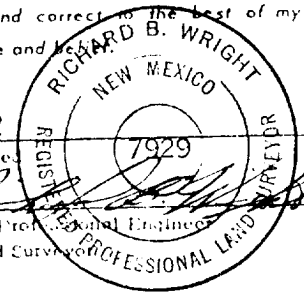
I hereby certify that the well location shown on this plat was plotted from field notes of actual surveys made by me or under my supervision, and that the same is true and correct to the best of my knowledge and belief.

Date Surveyed
2/13/82

[Signature]
Registered Professional Engineer
and/or Land Surveyor

Richard B. Wright

Certificate No.
7929



NEW MEXICO OIL CONSERVATION COMMISSION
WELL LOCATION AND ACREAGE DEDICATION PLAT

RECEIVED

Form C-122
Supersedes C-128
Effective 1-1-65

All distances must be from the outer boundaries of the Section.

FEB 16 1982

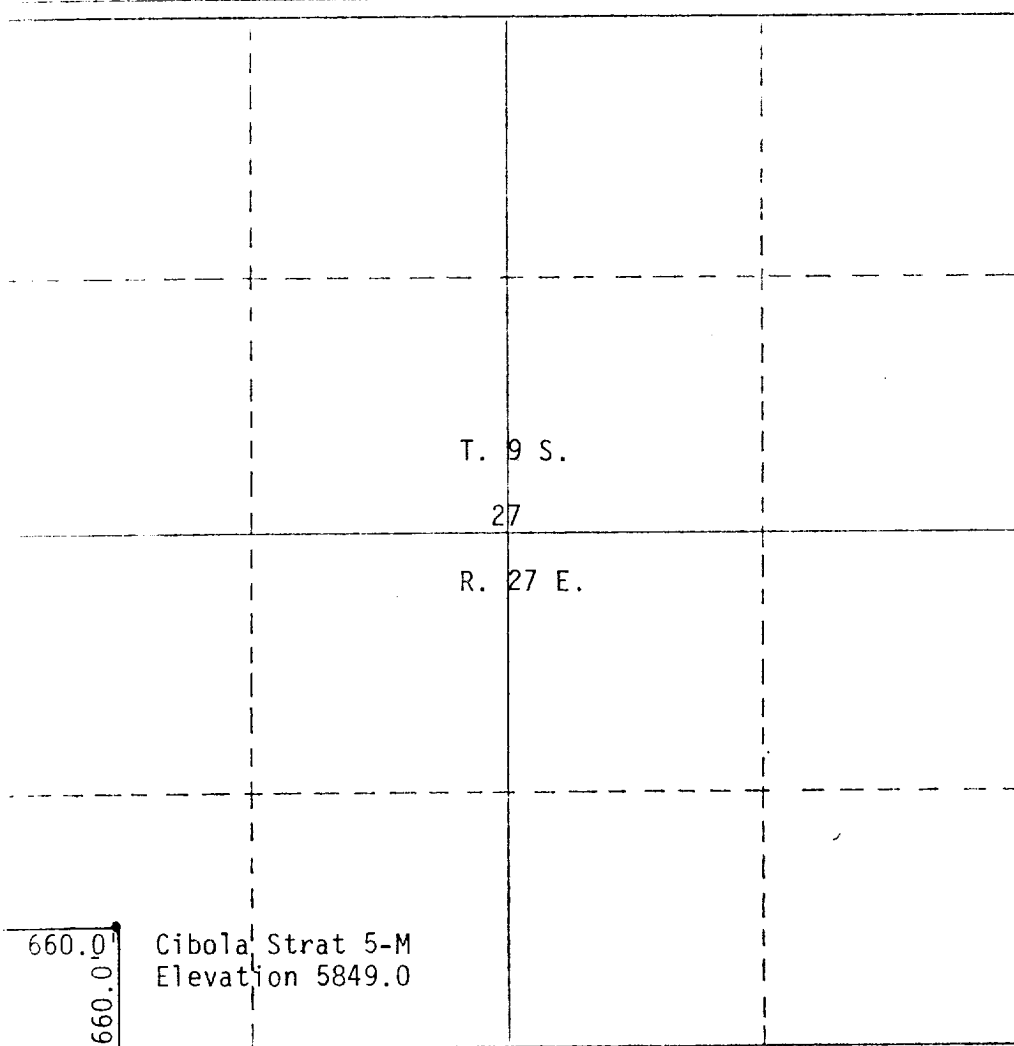
| | | | | | |
|------------------------------------|----------------------|-----------------------------------|-------------------------|----------------------------|--|
| Operator Cibola Energy | | Lease Cibola Strat Test | | Well No. Cibola 5-M | |
| Section M | Section 27 | Township 9 South | Range 27 East | County Chaves | |
| ARTESIA, OFFICE | | | | | |
| Total Footage Location of Well: | | | | | |
| 660.0 feet from the south | | Line and 660.0 | | feet from the west | |
| Surface Elevation 5849.0 | Producing Formation | | Pool | Dedicated Acreage | |

1. Outline the acreage dedicated to the subject well by colored pencil or hatchure marks on the plat below.
2. If more than one lease is dedicated to the well, outline each and identify the ownership thereof (both as to working interest and royalty).
3. If more than one lease of different ownership is dedicated to the well, have the interests of all owners been consolidated by communitization, unitization, force-pooling, etc?

☐ Yes ☐ No If answer is "yes," type of consolidation _____

If answer is "no," list the owners and tract descriptions which have actually been consolidated. (Use reverse side of this form if necessary.) _____

No allowable will be assigned to the well until all interests have been consolidated (by communitization, unitization, forced-pooling, or otherwise) or until a non-standard unit, eliminating such interests, has been approved by the Commission.



CERTIFICATION

I hereby certify that the information contained herein is true and complete to the best of my knowledge and belief.

Name *Richard B. Wright*

Position **R. B. Wright**

Agent

Company

Cibola Energy Corp.

Date

2/13/82

I hereby certify that the well location shown on this plat was plotted from field notes of actual surveys made by me or under my supervision, and that the same is true and correct to the best of my knowledge and belief.

2/13/82

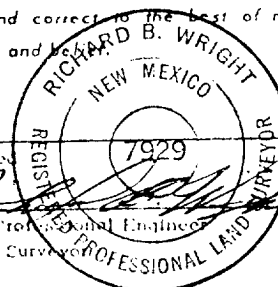
Date Surveyed

Registered Professional Engineer and/or Land Surveyor

Richard B. Wright

Certificate No.

7929



500 1000 1500 2000 2500 3000 3500 4000 4500 5000 5500 6000 6500 7000 7500 8000 8500 9000 9500 10000

NEW MEXICO OIL CONSERVATION COMMISSION
WELL LOCATION AND ACREAGE DEDICATION PLAT

RECEIVED

Form C-107
Supersedes C-128
Effective 1-1-65

All distances must be from the outer boundaries of the Section.

FEB 16 1982

| | | | | | | | | |
|---------------|----------|---------|---------|-----------------|-------------------|--|---------------------|--|
| Cibola Energy | | | Lease | | Cibola Strat Test | | Well No. Cibola 5-M | |
| Section | Township | Range | County | ARTESIA, OFFICE | | | | |
| M | 27 | 9 South | 27 East | Chaves | | | | |

Well Location of Well:

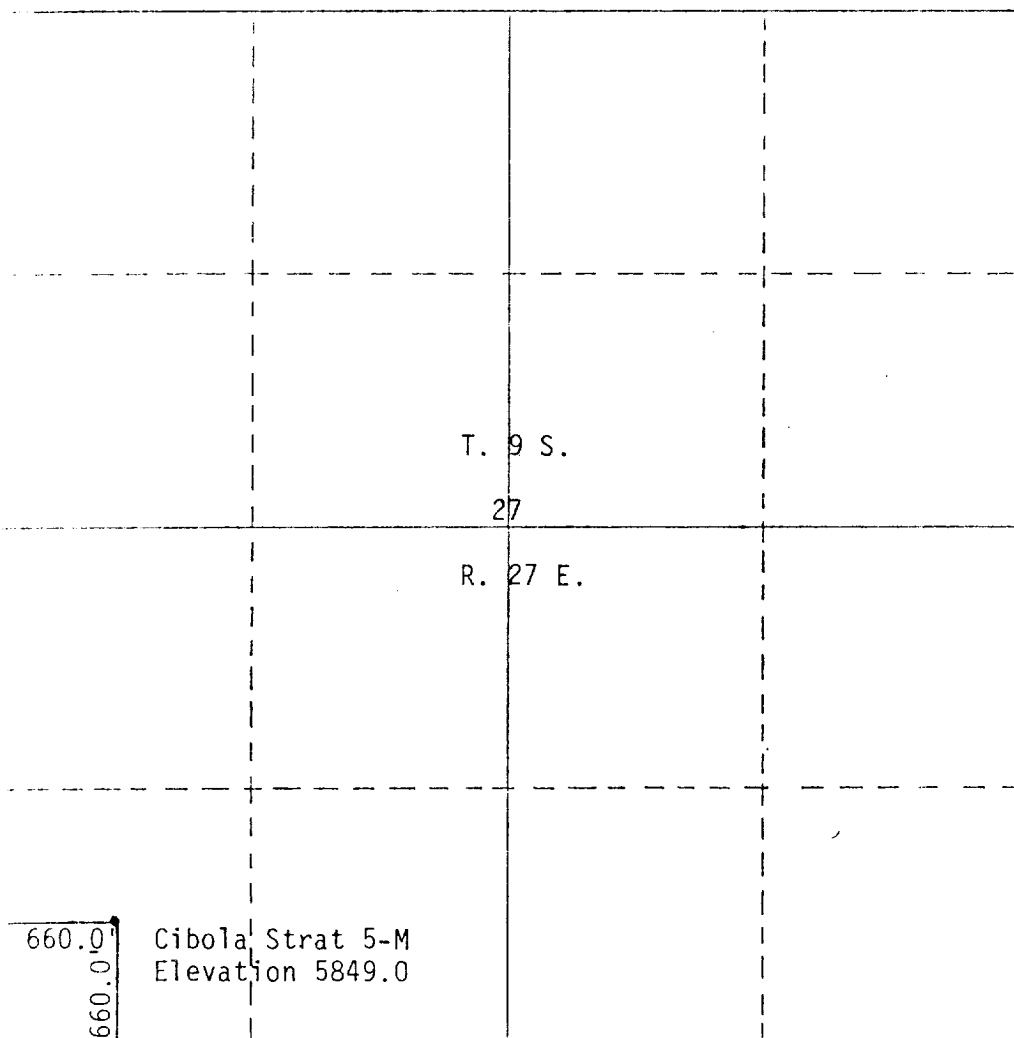
| | | | | | |
|--------|---------------------|----------|-------------------|--------------------|------|
| 660.0 | feet from the south | Line and | 660.0 | feet from the west | Line |
| 5849.0 | Producing Formation | Pool | Dedicated Acreage | | |

1. Outline the acreage dedicated to the subject well by colored pencil or hatchure marks on the plat below.
2. If more than one lease is dedicated to the well, outline each and identify the ownership thereof (both as to working interest and royalty).
3. If more than one lease of different ownership is dedicated to the well, have the interests of all owners been consolidated by communitization, unitization, force-pooling, etc?

☐ Yes ☐ No If answer is "yes," type of consolidation _____

If answer is "no," list the owners and tract descriptions which have actually been consolidated. (Use reverse side of this form if necessary.) _____

No allowable will be assigned to the well until all interests have been consolidated (by communitization, unitization, forced-pooling, or otherwise) or until a non-standard unit, eliminating such interests, has been approved by the Commission.



CERTIFICATION

I hereby certify that the information contained herein is true and complete to the best of my knowledge and belief.

[Signature]

Name

R. B. Wright

Position

Agent

Company

Cibola Energy Corp.

Date

2/13/82

I hereby certify that the well location shown on this plat was plotted from field notes of actual surveys made by me or under my supervision, and that the same is true and correct to the best of my knowledge and belief.

2/13/82

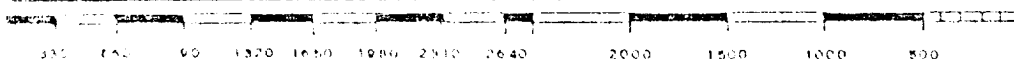
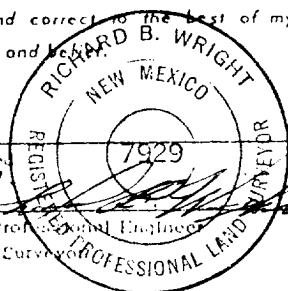
Date Surveyed

Registered Professional Engineer and/or Land Surveyor

Richard B. Wright

Certificate No.

7929



NEW MEXICO OIL CONSERVATION COMMISSION
WELL LOCATION AND ACREAGE DEDICATION PLAT

RECEIVED

Form C-112
Supersedes C-129
Effective 1-1-85

All distances must be from the outer boundaries of the Section

FEB 16 1982

| | | | | | | |
|-------------------------------|----------------------|----------------------------|-----------------------------------|-------------------------|----------|----------------------------|
| Owner Cibola Energy | | | Lease Cibola Strat Test | | O. C. D. | Well No. Cibola 5-M |
| Section M | Section 27 | Township 9 South | Range 27 East | County Chaves | | |

Well Location of Well:

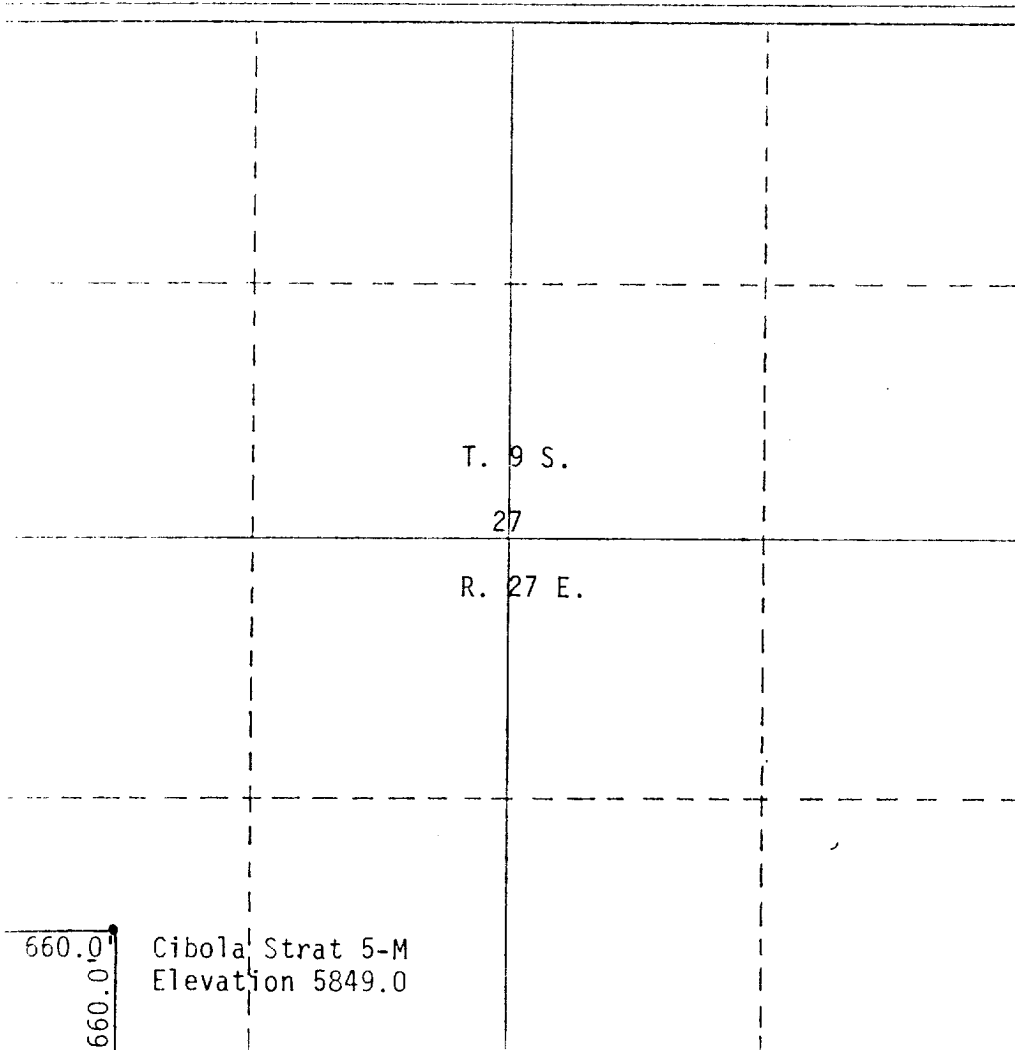
| | | | | | | | |
|--------|---------------------|-------|----------|-------|---------------|--------------------|------|
| 660.0 | feet from the | south | Line and | 660.0 | feet from the | west | Line |
| 5849.0 | Including Formation | | Pool | | | Dedicated Acreage: | |

1. Outline the acreage dedicated to the subject well by colored pencil or hatchure marks on the plat below.
2. If more than one lease is dedicated to the well, outline each and identify the ownership thereof (both as to working interest and royalty).
3. If more than one lease of different ownership is dedicated to the well, have the interests of all owners been consolidated by communitization, unitization, force-pooling, etc?

☐ Yes ☐ No If answer is "yes," type of consolidation _____

If answer is "no," list the owners and tract descriptions which have actually been consolidated. (Use reverse side of this form if necessary.) _____

No allowable will be assigned to the well until all interests have been consolidated (by communitization, unitization, forced-pooling, or otherwise) or until a non-standard unit, eliminating such interests, has been approved by the Commission.



CERTIFICATION

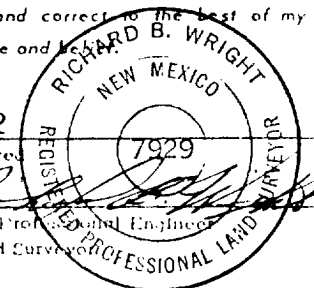
I hereby certify that the information contained herein is true and complete to the best of my knowledge and belief.

Richard B. Wright

| | |
|----------|----------------------------|
| Name | R. B. Wright |
| Position | Agent |
| Company | Cibola Energy Corp. |
| Date | 2/13/82 |

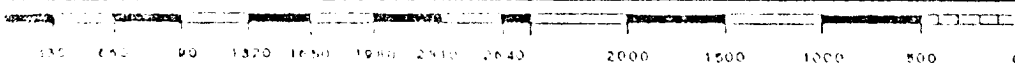
I hereby certify that the well location shown on this plat was plotted from field notes of actual surveys made by me or under my supervision, and that the same is true and correct to the best of my knowledge and belief.

| | |
|---|--------------------------|
| Date Surveyed | 2/13/82 |
| Registered Professional Engineer and/or Land Surveyor | <i>Richard B. Wright</i> |



Richard B. Wright

Certificate No.
7929



NEW MEXICO OIL CONSERVATION COMMISSION
WELL LOCATION AND ACREAGE DEDICATION PLAT **RECEIVED**

Form C-122
Supersedes C-122R
Effective 1-1-65

All distances must be from the outer boundaries of the Section.

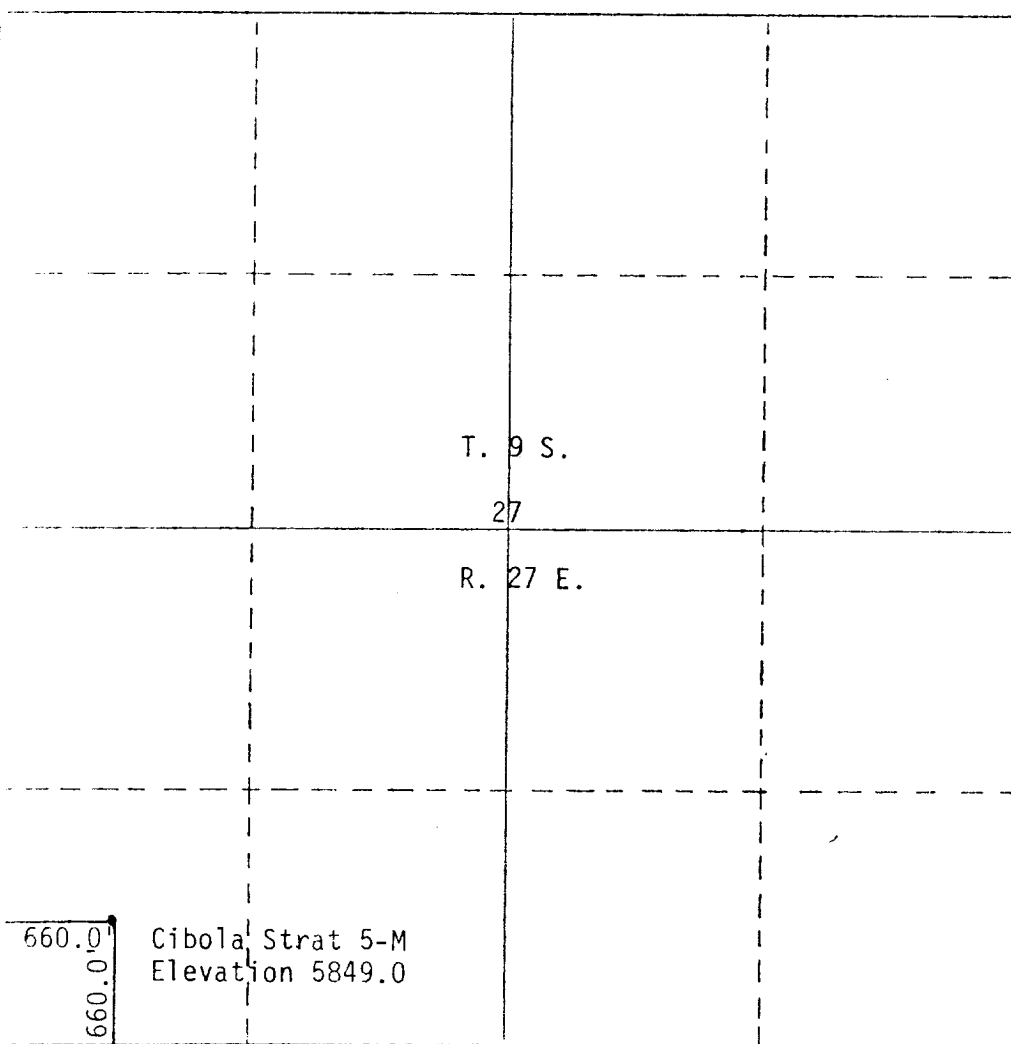
| | | | | | | |
|-------------------------------------|----------------------|-----------------------------------|-----------------------------------|-------------------------------|--------------------|-------------------------------|
| Operator Cibola Energy | | | Lease Cibola Strat Test | | FEB 16 1982 | Well No. Cibola 5-M |
| Well Letter M | Section 27 | Township 9 South | Range 27 East | County O. C. D. | | |
| Actual Well Location of Well: | | | | Chaves ARTESIA, OFFICE | | |
| 660.0 feet from the south | | line and 660.0 feet from the west | | Base | | |
| Ground Level Elev. 5849.0 | Producing Formation | | Pool | | Dedicated Acreage | |

1. Outline the acreage dedicated to the subject well by colored pencil or hatchure marks on the plat below.
2. If more than one lease is dedicated to the well, outline each and identify the ownership thereof (both as to working interest and royalty).
3. If more than one lease of different ownership is dedicated to the well, have the interests of all owners been consolidated by communitization, unitization, force-pooling, etc?

☐ Yes ☐ No If answer is "yes," type of consolidation _____

If answer is "no," list the owners and tract descriptions which have actually been consolidated. (Use reverse side of this form if necessary.) _____

No allowable will be assigned to the well until all interests have been consolidated (by communitization, unitization, forced-pooling, or otherwise) or until a non-standard unit, eliminating such interests, has been approved by the Commission.



CERTIFICATION

I hereby certify that the information contained herein is true and complete to the best of my knowledge and belief.

Name
R. B. Wright
Position
Agent
Company
Cibola Energy Corp.
Date
2/13/82

I hereby certify that the well location shown on this plat was plotted from field notes of actual surveys made by me or under my supervision, and that the same is true and correct to the best of my knowledge and belief.

2/13/82
Date Surveyed

Registered Professional Engineer
and/or Land Surveyor

Richard B. Wright

Certificate No.
7929

