

MEXICO OIL CONSERVATION COMMISS. 4
WELL LOCATION AND ACREAGE DEDICATION PLAT

Form C-102
 Supersedes C-128
 Effective 1-1-85

All distances must be from the outer boundaries of the Section

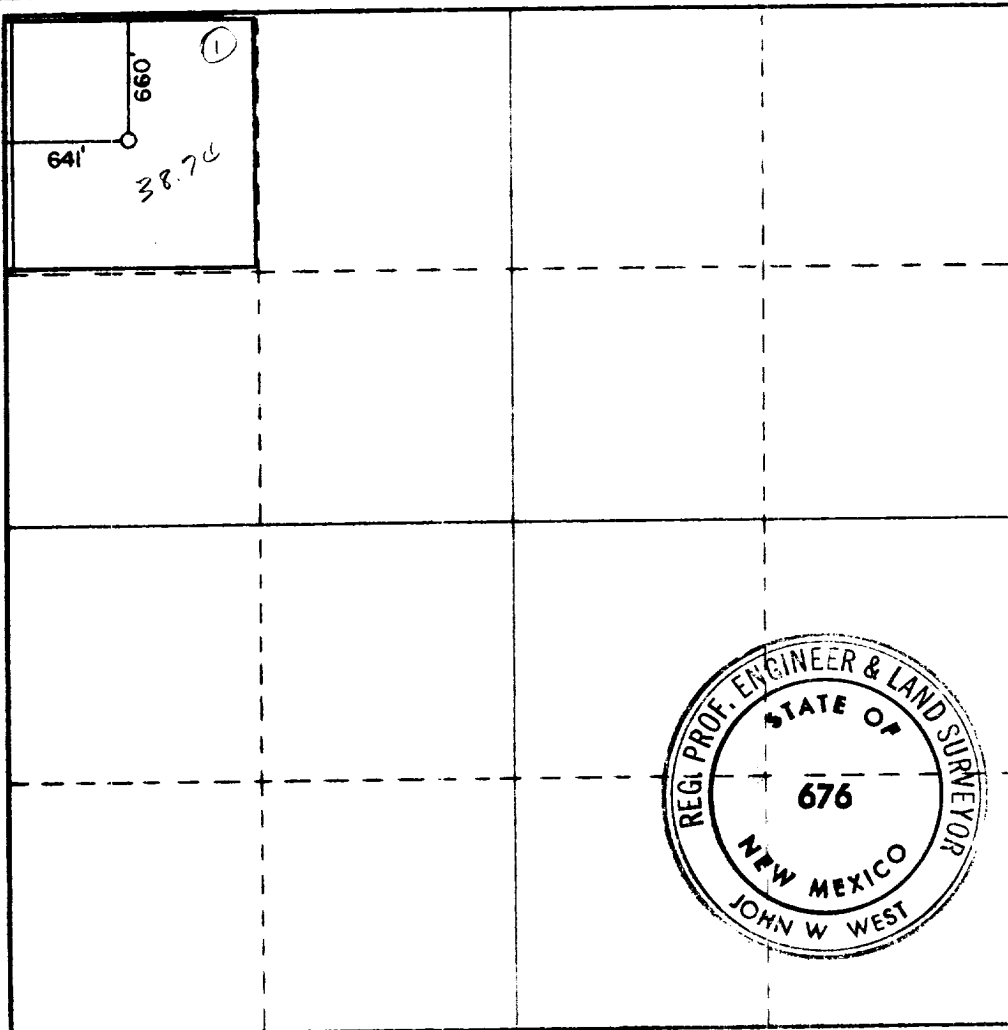
Operator The Harlow Corp..			Lease O'Brien Fee 19 A		Well No. 1
Unit Letter D	Section 19	Township 8 South	Range 29 East	County Chaves	
Actual Footage Location of Well: 660 feet from the North line and 641 feet from the West line					
Ground Level Elev. 3997.9	Producing Formation San Andres		Pool Termin LaFon Und. San Andres Assoc.	Dedicated Acreage: 38.74 40 Acres	

1. Outline the acreage dedicated to the subject well by colored pencil or hachure marks on the plat below.
2. If more than one lease is dedicated to the well, outline each and identify the ownership thereof (both as to working interest and royalty).
3. If more than one lease of different ownership is dedicated to the well, have the interests of all owners been consolidated by communitization, unitization, force-pooling, etc?

☒ Yes ☐ No If answer is "yes," type of consolidation Farmout

If answer is "no," list the owners and tract descriptions which have actually been consolidated. (Use reverse side of this form if necessary.) _____

No allowable will be assigned to the well until all interests have been consolidated (by communitization, unitization, forced-pooling, or otherwise) or until a non-standard unit, eliminating such interests, has been approved by the Commission.



CERTIFICATION

I hereby certify that the information contained herein is true and complete to the best of my knowledge and belief.

W.B. LaFon
 Name

W.B. LaFon

Position

Production Engineer

Company

The Harlow Corp.

Date

3/19/81

I hereby certify that the well location shown on this plat was plotted from field notes of actual surveys made by me or under my supervision, and that the same is true and correct to the best of my knowledge and belief.

Date Surveyed

3-16-81

Registered Professional Engineer and/or Land Surveyor

John W. West

State No. **JOHN W. WEST 676**
PATRICK A. ROMERO 686
Ronald J. Eidson 323