

STATE OF NEW MEXICO
ENERGY AND MINERALS DEPARTMENT

OIL CONSERVATION DIVISION
P. O. BOX 2088
SANTA FE, NEW MEXICO 87501

Form C-102
Revised 10-1-78

All distances must be from the outer boundaries of the Section.

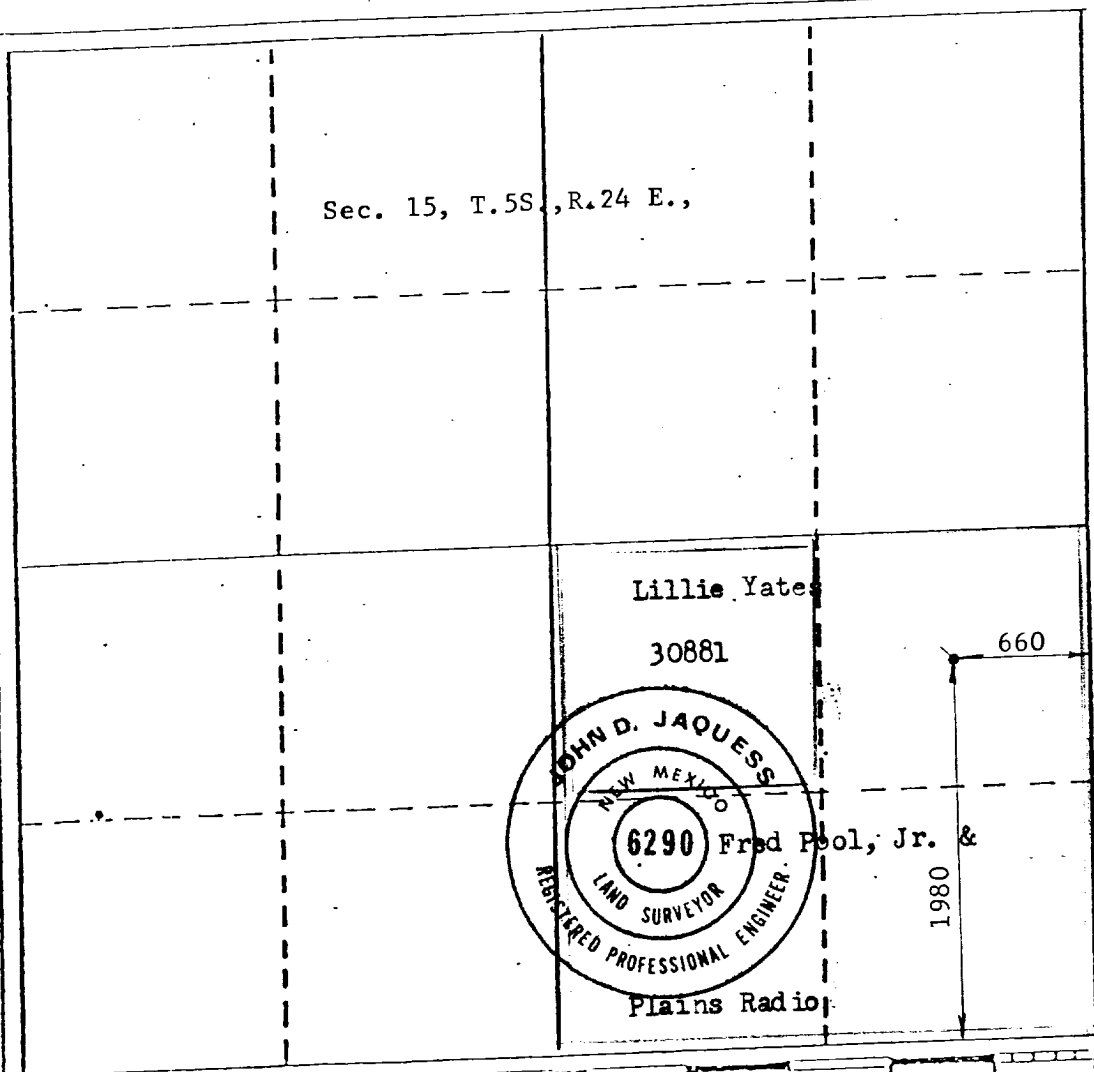
Operator Fred Pool Drlg. Co.		Lease Sagebrush		Well No. '1'
Unit Letter P I	Section 15	Township 5 South	Range 24 East	County Chaves
Actual Footage Location of Well:				
660 feet from the East		line and 1980		feet from the South line
Ground Level Elev. 3941	Producing Formation Abo	Pool Und. Abo - Wildcat		Dedicated Acreage: 160 Acres

1. Outline the acreage dedicated to the subject well by colored pencil or hatchure marks on the plat below.
2. If more than one lease is dedicated to the well, outline each and identify the ownership thereof (both as to working interest and royalty).
3. If more than one lease of different ownership is dedicated to the well, have the interests of all owners been consolidated by communitization, unitization, force-pooling, etc?

☐ Yes ☒ No If answer is "yes," type of consolidation _____

If answer is "no," list the owners and tract descriptions which have actually been consolidated. (Use reverse side of this form if necessary.) _____

No allowable will be assigned to the well until all interests have been consolidated (by communitization, unitization, forced-pooling, or otherwise) or until a non-standard unit, eliminating such interests, has been approved by the Division.



CERTIFICATION

I hereby certify that the information contained herein is true and complete to the best of my knowledge and belief.

Fred Pool Jr

Name

Fred Pool, Jr.

Position

President

Company

Fred Pool Drlg. Co. Inc.

Date

April 1-1981

I hereby certify that the well location shown on this plat was plotted from field notes of actual surveys made by me or under my supervision, and that the same is true and correct to the best of my knowledge and belief.

Date Surveyed

April 2, 1981

Registered Professional Engineer
and/or Land Surveyor

John D. Jaquess
John D. Jaquess, P.E. & L.S.
Certificate No.

6290