

NO. OF COPIES RECEIVED	
DISTRIBUTION	
SANTA FE	1
FILE	1
U.S.G.S.	2
LAND OFFICE	
OPERATOR	1

NEW MEXICO OIL CONSERVATION COMMISSION

RECEIVED

30-005-61052

Form C-101
Revised 14-65

JUL 28 1981

O. C. D.
ALBUQUERQUE OFFICE

5A. Indicate Type of Lease
STATE FEE

5. State Oil & Gas Lease No.

APPLICATION FOR PERMIT TO DRILL, DEEPEN, OR PLUG BACK

1a. Type of Work
 DRILL DEEPEN PLUG BACK
 b. Type of Well
 OIL WELL GAS WELL OTHER SINGLE ZONE MULTIPLE ZONE

2. Name of Operator
DEPCO, Inc.

3. Address of Operator
800 Central, Odessa, Texas 79761

4. Location of Well
 UNIT LETTER H LOCATED 1980 FEET FROM THE North LINE
 AND 660 FEET FROM THE East LINE OF SEC. 13 TWP. 12S RGE. 29E NMPM

7. Unit Agreement Name
White Ranch Unit

8. Farm or Lease Name
White Ranch Unit

9. Well No.
2

10. Field and Pool, or Wildcat
Wildcat Miss.

12. County
Chaves

19. Proposed Depth
9400'

19A. Formation
Mississippian

20. Rotary or C.T.
Rotary

21. Elevations (Show whether DF, RT, etc.)
3827.8 GR

21A. Kind & Status Plug. Bond
Blanket

21B. Drilling Contractor
WEK Drlg.

22. Approx. Date Work will start
On Approval

23.

PROPOSED CASING AND CEMENT PROGRAM

SIZE OF HOLE	SIZE OF CASING	WEIGHT PER FOOT	SETTING DEPTH	SACKS OF CEMENT	EST. TOP
17 1/2"	13 3/8"	48#	350'	350 sx.	Circ.
11"	8 5/8"	24 & 32#	2500'	500 sx.	Circ.
7 7/8"	4 1/2"	11.6#	9400'	500 sx.	7000'

See attached for B.O.P.'s & Rig Plat
Gas production not dedicated

*Positive
API & ML Bond
9-31-81*

APPROVAL VALID FOR 180 DAYS
 PERMIT EXPIRES 1-30-82
 UNLESS DRILLING UNDERWAY

IN ABOVE SPACE DESCRIBE PROPOSED PROGRAM: IF PROPOSAL IS TO DEEPEN OR PLUG BACK, GIVE DATA ON PRESENT PRODUCTIVE ZONE AND PROPOSED NEW PRODUCTIVE ZONE. GIVE BLOWOUT PREVENTER PROGRAM, IF ANY.

I hereby certify that the information above is true and complete to the best of my knowledge and belief.

Signed R.L. Denney R.L. Denney Title Chief Production Clerk Date 7-27-81

(This space for State Use)

APPROVED BY W.A. Gressett TITLE SUPERVISOR, DISTRICT II DATE JUL 30 1981

CONDITIONS OF APPROVAL, IF ANY:

NEW MEXICO OIL CONSERVATION COMMISSION
WELL LOCATION AND ACREAGE DEDICATION AT

1981

All distances must be from the outer boundary of the Section

DEPCO, Inc.,

White Ranch Unit

2

11 13 12 South 29 East Chavez

1000 north 000 east

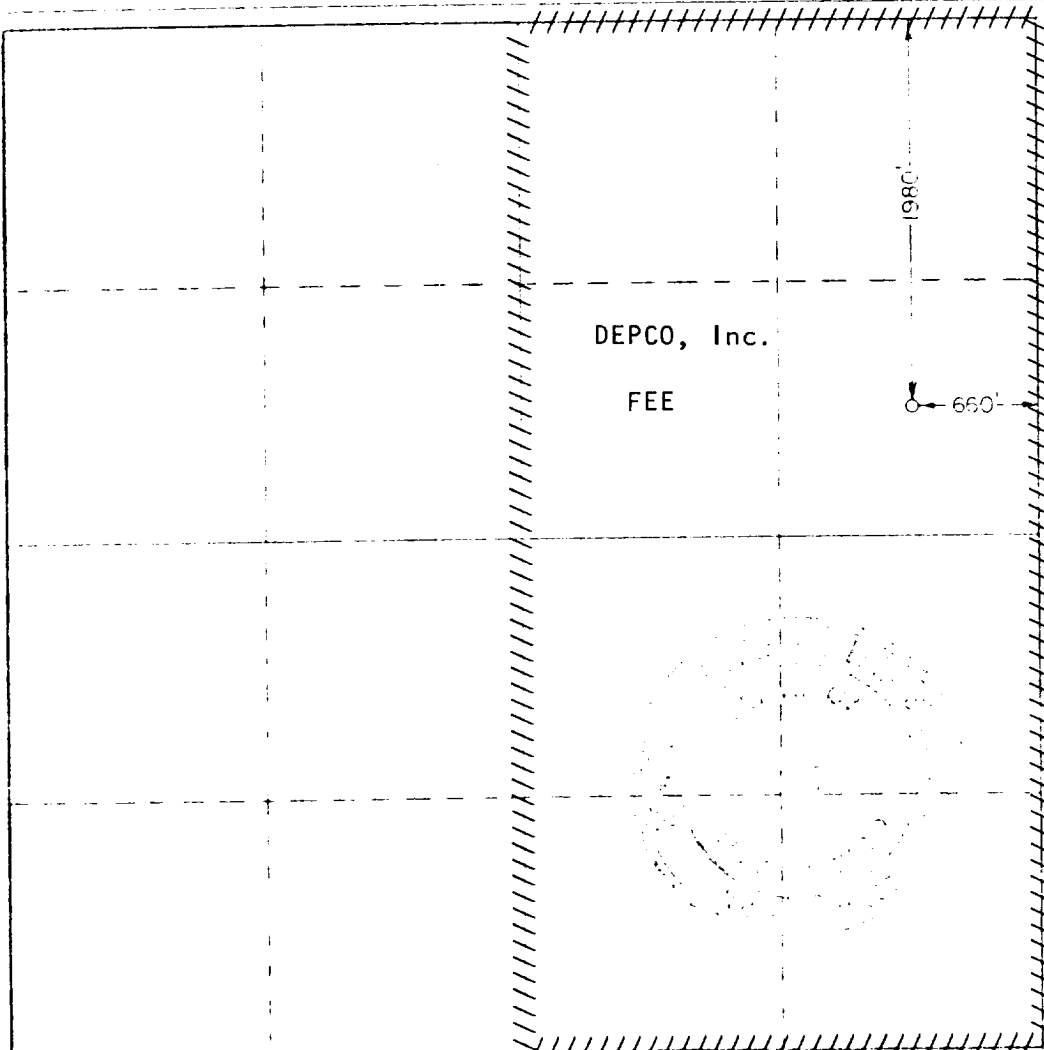
3527.5 Mississippian Wildcat Miss. 320

1. Outline the acreage dedicated to the subject well by colored pencil or hachure marks on the plat below.
2. If more than one lease is dedicated to the well, outline each and identify the ownership thereof (date, acreage, interest and royalty).
3. If more than one lease of different ownership is dedicated to the well, have the interests of all wells consolidated by communitization, unitization, force-pooling, etc?

X Yes No If answer is "yes," type of consolidation Unitization

If answer is "no," list the owners and tract descriptions which have actually been consolidated (use separate sheet if necessary)

No allowable will be assigned to the well until all interests have been consolidated. It is not acceptable to force pool for force-pooling, or otherwise, or utilize a non-standard unit, eliminating such interests, has been approved by the State.



I hereby certify that the information furnished here in is true and correct to the best of my knowledge and belief.

R.L. Denney R.L. Denney

Chief Production Clerk

DEPCO, Inc.

7-27-81

I hereby certify that the well location shown on this plat was plotted from field notes of actual surveys made by me or under my supervision and that the same is true and correct to the best of my knowledge and belief.

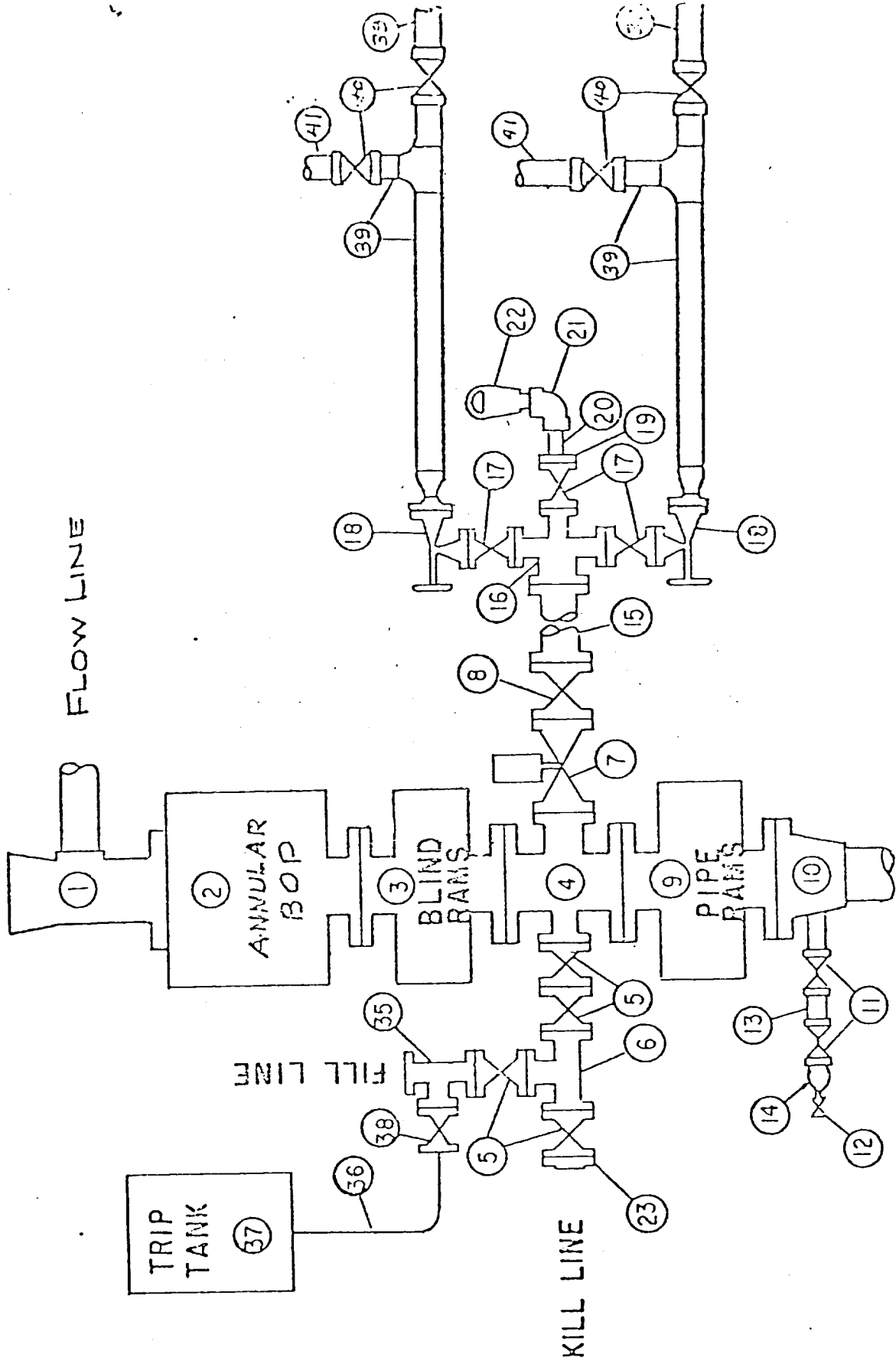
June 1, 1981

John W. Vest

Certified by: JOHN W. VEST
PATRICK A. ROBERTSON
Rt. 1, Edgemoor, N.M.

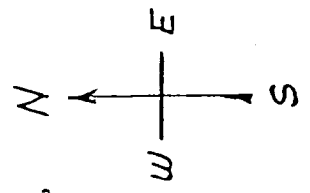
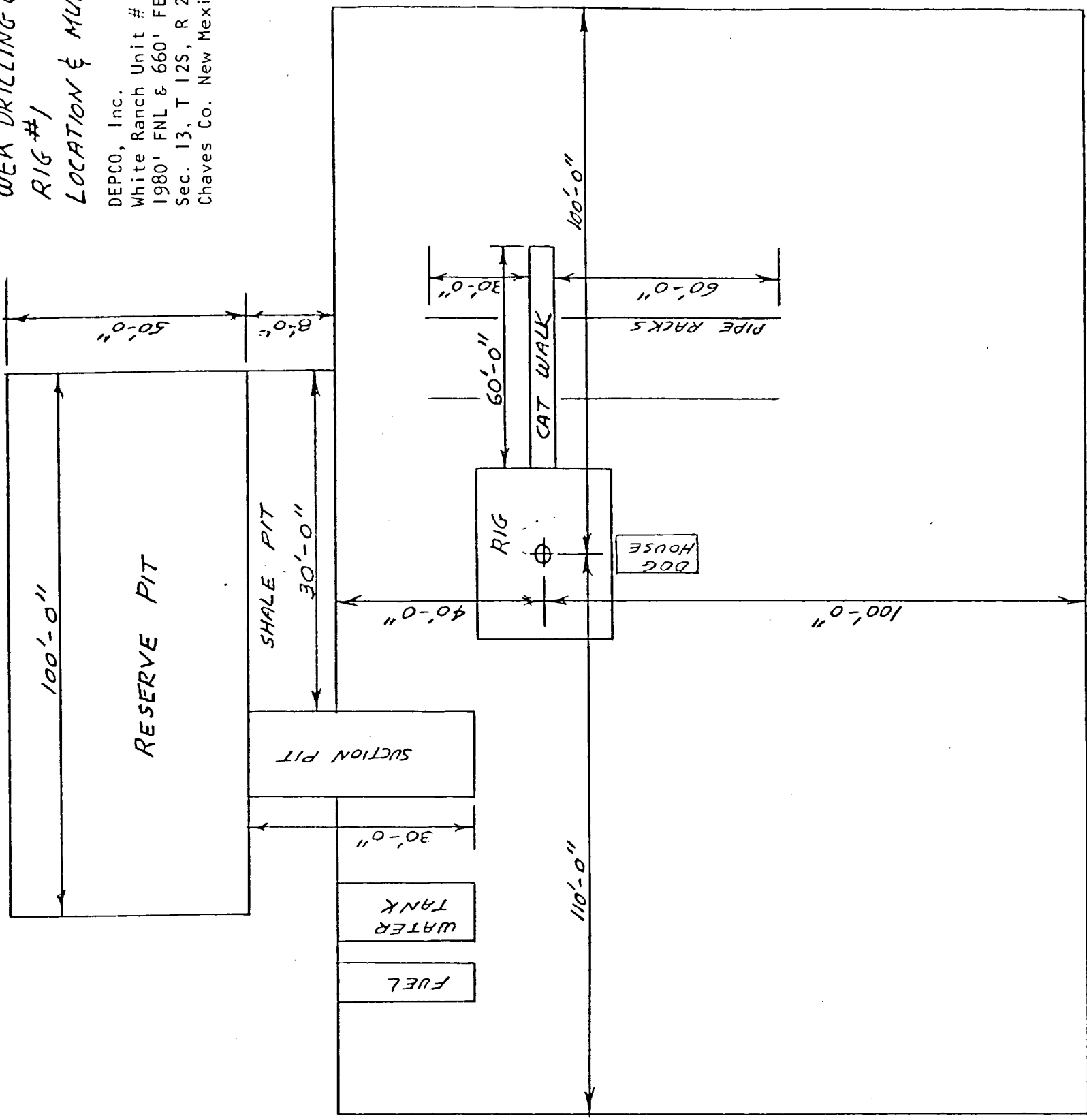
BLOWOUT PREVENTER SPECIFICATION

DEPCO, Inc.
White Ranch Unit # 2
1980' FNL & 660' FEL
Sec. 13, T 12S, R 29E
Chaves Co. New Mexico



WEK DRILLING Co., INC.
 RIG #1
 LOCATION & MUD PIT SP.

DEPCO, Inc.
 White Ranch Unit # 2
 1980' FNL & 660' FEL
 Sec. 13, T 12S, R 29E
 Chaves Co. New Mexico



RECEIVED

JUL 28 1981

O. C. D.
ARTESIA, OFFICE

Archaeological Clearance Report
for
DEPCO, INCORORATED

White Ranch Unit Well No. 2
Improvements to Existing Jeep Trail
and
Expansion of Existing Quarry,
Section 30, T12S, R29E, NMPM, Chaves County, New Mexico

Prepared

By

J. Loring Haskell

and

John C. Haight

Submitted

By

Dr. J. Loring Haskell
Principal Investigator
New Mexico Archaeological Services, Inc.
Carlsbad, New Mexico

26 June 1981

Permit No. 80-NM-193

ABSTRACT

New Mexico Archaeological Services, Inc., representing DEPCO, INCORPORATED, Odessa, undertook an archaeological reconnaissance of Bureau of Land Management lands scheduled to be impacted by the construction of a drill location, one of two possible access roads, improvements to an existing jeep trail, and expansion of an existing quarry. The investigated areas are situated in Sections 13 and 30, T12S, R29E, NMPM, Chaves County, New Mexico. No cultural resources were recorded during this reconnaissance, and hence NMAAS is *suggesting* clearance for DEPCO, INCORORATED's proposed work.

Introduction

On 24 June 1981, New Mexico Archaeological Services, Inc., (NMAS), Carlsbad, undertook for DEPCO, INCORPORATED, Odessa, an archaeological reconnaissance of federal lands administered by the Bureau of Land Management in Chaves County, New Mexico. Reconnoitered areas will be impacted by the construction of a drill location, one of two possible associated access roads, improvements of an existing jeep trail, and expansion of an existing quarry. This project was advanced by Mr. Bob Denney, Chief Production Clerk, DEPCO, INCORPORATED, and administered by Dr. J. Loring Haskell, Principal Investigator, NMAS, Inc. This reconnaissance was undertaken by Mr. John C. Haight, Research Assistant, and Ms. Kathryne A. Martin, Staff Archaeologist.

Survey Technique

For this investigation, DEPCO, INCORPORATED's proposed location was reconnoitered for evidence of man's past activities by walking it in a series of 25 ft wide, close interval (15° or less), zigzag transects. In addition an added zone embracing to 20 ft on each side of the staked 400 x 400 ft location, and hence lying outside the bounds of the proposed work area, was reconnoitered by a similar means. As for the access and ranch roads, they were walked in two 25 ft wide transects. Similarly, the quarry was reconnoitered by walking its perimeter in a series of 20 ft wide, close interval (15° or less), zigzag transects. This zone extends back from the edge of the quarry for a distance of 60 ft. Methodologically, this procedure served to promote optimal conditions for the visual examination of areas to be impacted by construction-related activities.

White Ranch Unit Well No. 2

Location

The proposed location will measure 400 X 400 ft on federal lands and will be situated 1980 ft from the north line and 660 ft from the east line of:

Section 13, T12S, R29E, NMPM, Chaves County, NM

For this project, two access roads (No. 1 and No. 2) were reconnoitered on federal lands. Access road No. 1 will measure 20 X 2400 ft and will be situated in the:

SE $\frac{1}{4}$ NE $\frac{1}{4}$, Section 13, T12S, R29E, NMPM, Chaves County, NM
 SW $\frac{1}{4}$ NE $\frac{1}{4}$, Section 13, T12S, R29E, NMPM, Chaves County, NM
 SE $\frac{1}{4}$ NW $\frac{1}{4}$, Section 13, T12S, R29E, NMPM, Chaves County, NM

Access road No. 2 will measure 20 X 400 ft and will be situated in the:

SE $\frac{1}{4}$ NE $\frac{1}{4}$, Section 13, T12S, R29E, NMPM, Chaves County, NM

Map Reference: USGS CULP RANCH QUADRANGLE, 7.5 Minute Series, 1973.

Terrain

DEPCO, INCORPORATED's proposed location will be situated on a flat portion of an otherwise duned landform. Prominent, stabilized, coppice-type, sand dunes lie to the north. Overall, this landform is coextensive with the Mescalero Sands. Areal drainage is of an internal nature owing to the high permeability of associated soils. Pedons, universally dominated by the sand separate, belong to the Typic Torripsamment subgroup and its intergrades. Inclusions are infrequent.

Floristics

Locally, soil individuals host a low overstory of *Quercus havardii*, *Yucca glauca*, and *Chrysothamnus pulchellus*. Of these, *Quercus* is dominant. Attendant forbs include *Euphorbia* sp., *Gutierrezia sarothrae*,

and *Phacelia* sp. The Gramineae is represented by *Aristida* sp., *Andropogon glomeratus*, and *Sporobolus flexuosus*.

Cultural Resources

No cultural resources were recorded during the course of this reconnaissance. Their overall absence is due chiefly to the nature of the attendant landform and its concomitant lack of lithic material needed for flaked-tool manufacture. Added problems in the immediate vicinity are the absence of suitable shelter and potable water. Localities better suited to meeting minimal needs lie to the north, i.e., the stabilized dune field.

Recommendations

NMAS recommends clearance for DEPCO, INCORPORATED's proposed White Ranch Unit Well No. 2 and its associated access roads and *suggests* that work-related activities proceed in accordance with company plans. Clearance, of course, is granted by the Bureau of Land Management. If cultural resources are encountered during construction, the BLM and NMAS should be notified immediately. Dune settings are notorious for covering and uncovering cultural properties.

Modifications to Existing Jeep Trail

Location

As proposed, DEPCO, INCORPORATED's easement will measure 20 X 3960 ft on federal lands and will be situated in the:

SE $\frac{1}{4}$ NE $\frac{1}{4}$, Section 13, T12S, R29E, NMPM, Chaves County, NM
 NE $\frac{1}{4}$ SE $\frac{1}{4}$, Section 13, T12S, R29E, NMPM, Chaves County, NM
 SE $\frac{1}{4}$ SE $\frac{1}{4}$, Section 13, T12S, R29E, NMPM, Chaves County, NM
 SW $\frac{1}{4}$ SW $\frac{1}{4}$, Section 13, T12S, R29E, NMPM, Chaves County, NM

Map Reference: USGS CULP RANCH QUADRANGLE, 7.5 Minute Series, 1973.

Terrain

The investigated road crosses an undulating landform overlain by generally stabilized aeolian deposits. Drainage is of the internal type. Soil individuals are composed of loose, non-calcareous, sandy loams and loamy sands with occasional gravel-sized caliche inclusions. Peds belong to the Typic Torripsamment subgroup and its intergrades.

Floristics

This landform hosts a dominant floral overstory of *Quercus havardii* with less frequent occurrences of *Yucca glauca*, *Artemisia filifolia*, *Chrysothamnus pulchellus*, and *Opuntia macrocentra*. Attendant forbs include *Gutierrezia sarothrae*, *Phacelia* sp., and an unidentified Compositae. The Gramineae is represented by *Aristida* sp., *Sporobolus flexuosus*, and *Andropogon glomeratus*.

Cultural Resources

No cultural resources were recorded during the course of this reconnaissance. Reasons cited for their absence include a paucity of potable water, a lack of shelter, and a dearth of potentially knappable material needed for stone-tool manufacture. Prehistoric land usage centered on hunting- and gathering activities. Most usage occurred during the Late Achaic (A.D. 750-950) and Jornada Mogollon (A.D. 950-1350) times.

Recommendations

NMAS recommends clearance for DEPCO, INCORPORATED's proposed road project and *suggests* that work-related activities proceed in accordance with company plans. Clearance, of course, is granted by the Bureau of Land Management. If cultural resources are encountered during construction, the BLM and NMAS should be notified immediately. Duned

settings are notorious for covering and uncovering cultural properties.

Quarry, Section 30, T12S, R29E

Location

The existing quarry, measuring 2800 ft in circumference, is situated in the:

NE $\frac{1}{4}$ NE $\frac{1}{4}$, Section 30, T12S, R29E, NMPM, Chaves County, NM

Map Reference: USGS CULP RANCH QUADRANGLE, 7.5 Minute Series, 1973.

Terrain

The investigated quarry is situated on an undulating landform overlain by generally stabilized aeolian deposits. Deflation basins are closed with hummocks to 1 m in height. Drainage is of the internal type. Pedons belong to the Typic Torripsamment subgroup which are composed of sandy loams and loamy sands. Caliche lag deposits are rare.

Floristics

Areal soils host a dominant overstory of *Prosopis juliflora* with less frequent occurrences of *Quercus havardii*, *Yucca glauca*, and *Artemisia filifolia*. Associated forbs include *Gutierrezia sarothrae*, *Perezia nana*, and *Croton* sp. The Gramineae is represented by *Sporobolus flexuosus*, *Andropogon glomeratus*, and *Aristida* sp.

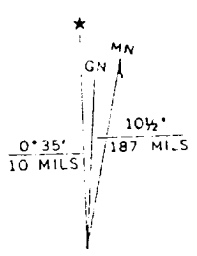
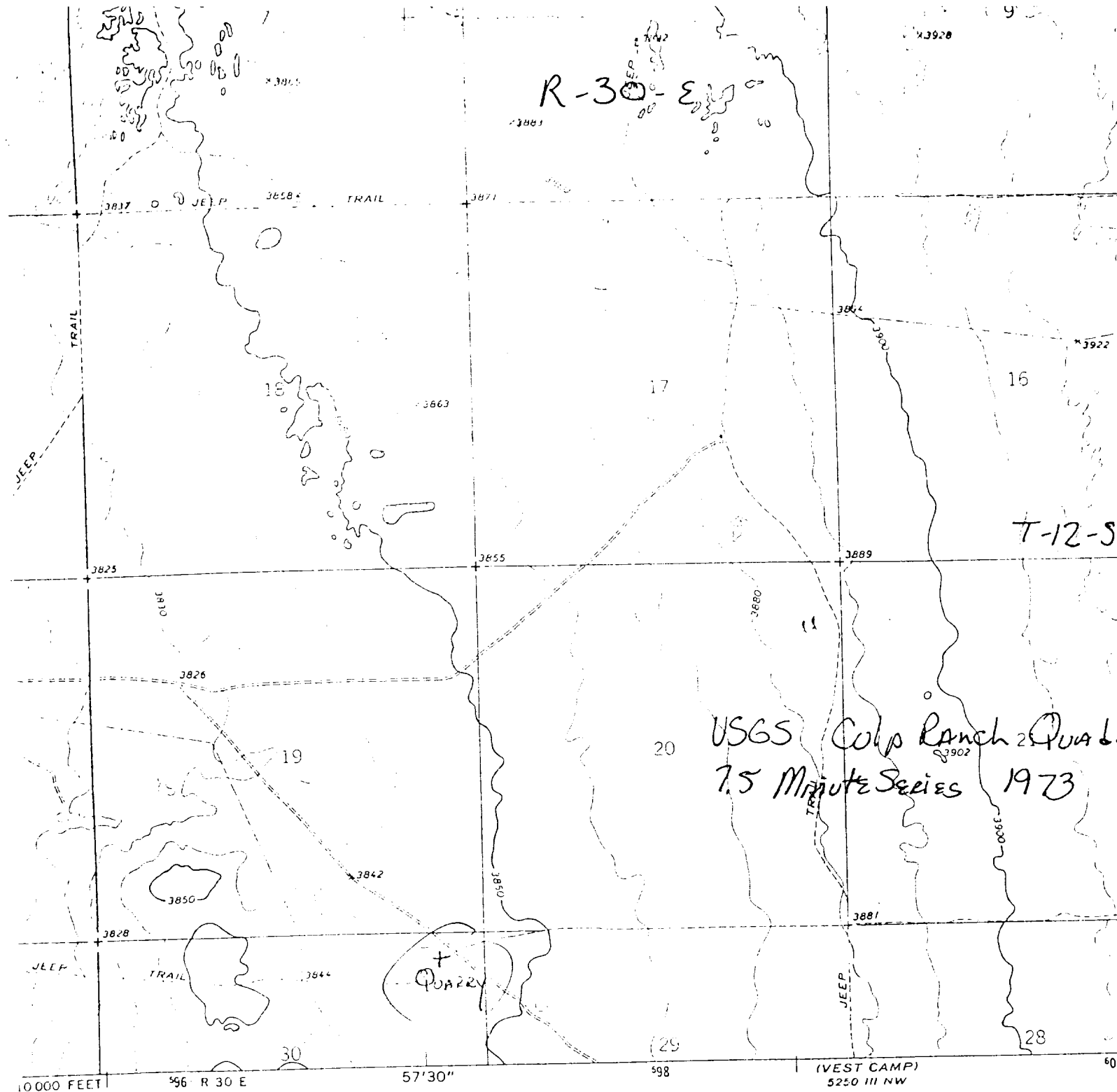
Cultural Resources

No cultural resources were recorded during the course of this reconnaissance. Prehistorically, this landform was used on a seasonal basis for hunting *Artilocapra*, *Lepus*, and *Sylvilagus*. Most usage occurred during Jornada Mogollon (A.D. 950 to 1350) times.

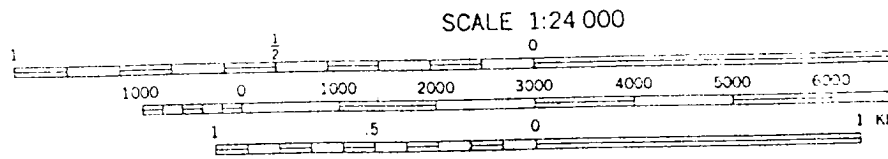
Recommendations

NMAS recommends clearance for the proposed expansion of the quarry and *suggests* that DEPCO, INCORPORATED proceed with its existing plans.

Clearance, of course, is granted by the Bureau of Land Management. If cultural resources are encountered during construction, the BLM and NMAS should be notified immediately. Duned settings are notorious for covering and uncovering cultural properties.



UTM GRID AND 1973 MAGNETIC NORTH DECLINATION AT CENTER OF SHEET



CONTOUR INTERVAL 10 FEET
 50-FOOT CONTOURS SHOWN IN SHIFTING SAND AREAS,
 NATIONAL GEODEIC VERTICAL DATUM OF 1929

THIS MAP COMPLIES WITH NATIONAL MAP ACCURACY STANDARDS FOR SALE BY U.S. GEOLOGICAL SURVEY, DENVER, COLORADO 80225, OR RESTON, VA. A FOLDER DESCRIBING TOPOGRAPHIC MAPS AND SYMBOLS IS AVAILABLE ON REQUEST.