

NEW MEXICO OIL CONSERVATION COMMISSION

RECEIVED

Form C-101
Revised 12-85

30-005-61254

DEC - 1 1981

O. C. D.

ARTESIA OFFICE

APPLICATION FOR PERMIT TO DRILL, DEEPEN, OR PLUG BACK

5A. Indicate Type of Lease

STATE ☐FEE ☒

5. State Oil & Gas Lease No.

7. Unit Agreement Name

8. Farm or Lease Name

J. P. White

9. Well No.

7

10. Field and Pool, or Wildcat

Race Track SA

12. County

Chaves

18. Proposed Depth

2250'

19A. Formation

San Andres

20. Rotary or C.T.

CT

21. Elevations (Show whether DF, KT, etc.)

3775.1 Gr.

21A. Kind & Status Plug. Bond

Statewide

21B. Drilling Contractor

Comanche Drilling

22. Approx. Date Work will start

December 14, 1981

23.

PROPOSED CASING AND CEMENT PROGRAM

SIZE OF HOLE	SIZE OF CASING	WEIGHT PER FOOT	SETTING DEPTH	SACKS OF CEMENT	EST. TOP
10"	8 5/8"	20#	400'	85	circ.
8"	7"	20#	2250'	150	2000

WE PROPOSE TO:

Drill a 10" hole and set 8 5/8" casing to 350'. Circulate cement to surface, WOC 18 hours. Test hole for fluid entry. If bailed dry, will commence drilling an 8" hole to 2250'. Run DLL with Mirroloaterology, CNL-FDC-GR. We will set 7" casing to either TD or above P-1 zone depending on the outcome of the logs. In latter case, open hole completion will be attempted, in former case, casing will be perforated.

APPROVAL VALID FOR 180 DAYS
PERMIT EXPIRES 6-382
UNLESS DRILLING UNDERWAY

IN ABOVE SPACE DESCRIBE PROPOSED PROGRAM: IF PROPOSAL IS TO DEEPEN OR PLUG BACK, GIVE DATA ON PRESENT PRODUCTIVE ZONE AND PROPOSED NEW PRODUCTIVE ZONE. GIVE BLOWOUT PREVENTER PROGRAM, IF ANY.

I hereby certify that the information above is true and complete to the best of my knowledge and belief.

Signed Arleta Vigil Title Drilling Secretary Date 11-18-81

(This space for State Use)

APPROVED BY Mike Williams TITLE OIL AND GAS INSPECTOR DATE DEC 3 1981

CONDITIONS OF APPROVAL, IF ANY:

Cement must be circulated to
surface behind 8 5/8 casing

Posted ID-1
API + NLB
12-4-81

NEW MEXICO OIL CONSERVATION COMMISSION
WELL LOCATION AND ACREAGE DEDICATION PLAT

Form C-102
Supersedes C-128
Effective 1-1-65

All distances must be from the outer boundaries of the Section

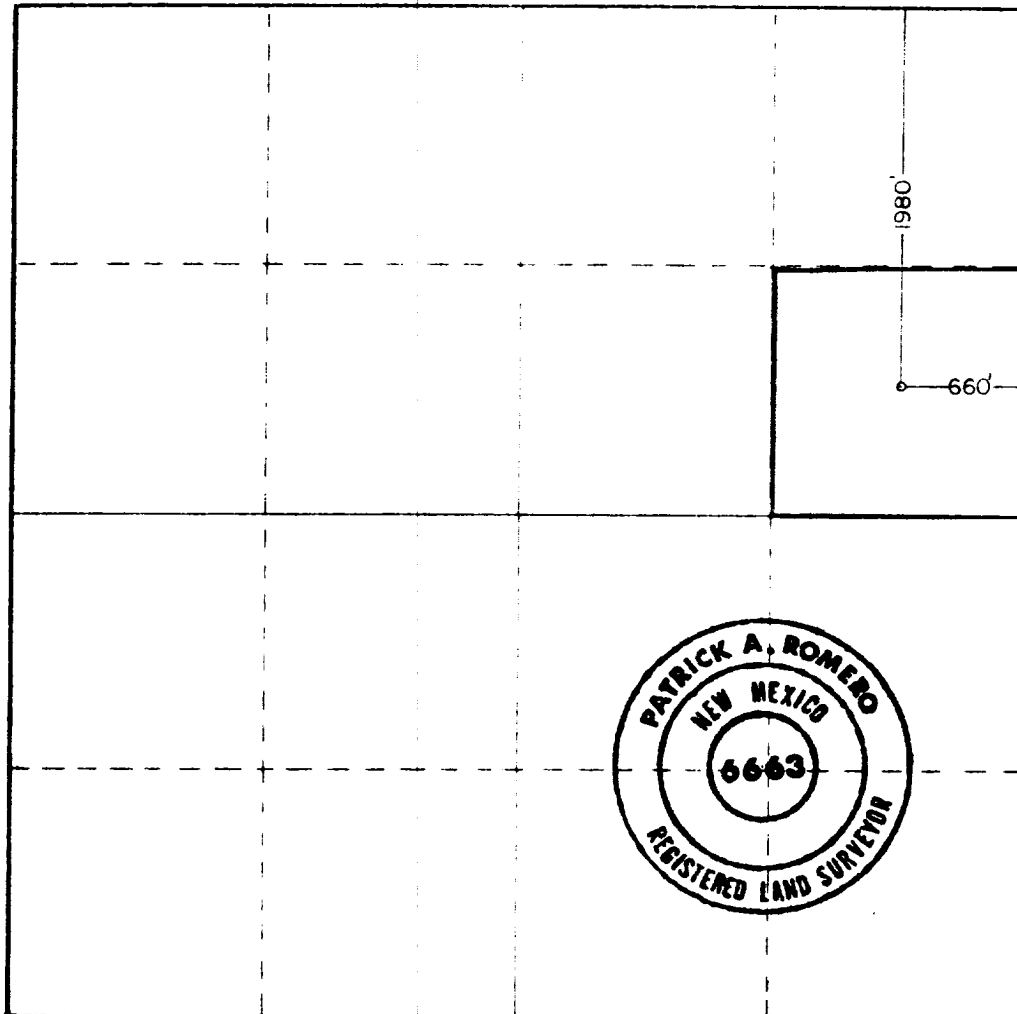
Operator CIBOLA ENERGY CORP.		Lease J.P. WHITE		Well No. 7
Unit Letter H	Section 18	Township 10 SOUTH	Range 28 EAST	County CHAVES
Actual Portage Location of Well: 660 feet from the EAST line and 1980 feet from the NORTH line				
Ground Level Elev. 3775.1	Producing Formation San Andres	Foot. <i>and</i> Race Track SA	Dedicated Acreage: 40	

1. Outline the acreage dedicated to the subject well by colored pencil or hatchure marks on the plat below.
2. If more than one lease is dedicated to the well, outline each and identify the ownership thereof (both as to working interest and royalty)
3. If more than one lease of different ownership is dedicated to the well, have the interests of all owners been consolidated by communitization, unitization, force-pooling, etc?

☐ Yes ☒ No If answer is "yes," type of consolidation _____

If answer is "no," list the owners and tract descriptions which have actually been consolidated. (Use reverse side of this form if necessary.) All leases are held by operator and participating parties.

No allowable will be assigned to the well until all interests have been consolidated (by communitization, unitization, forced-pooling, or otherwise) or until a non-standard unit, eliminating such interests, has been approved by the Commission.



CERTIFICATION

I hereby certify that the information contained herein is true and complete to the best of my knowledge and belief

Anita Vigil

Name

Anita Vigil

Position

Drilling Secretary

Company

Cibola Energy Corp.

Date

11-18-81

I hereby certify that the well location shown on this plat was plotted from field notes of actual surveys made by me or under my supervision, and that the same is true and correct to the best of my knowledge and belief.

Date Surveyed

11-10-81

Registered Professional Engineer and/or Land Surveyor

Patrick A. Romero

Certificate No. **JOHN W. WEST 678**
PATRICK A. ROMERO 6663
Ronald J. Eidson 3239

0 330 660 990 1320 1650 1980 2310 2640 2970 3300 3630 3960 4290 4620 4950 5280 5610 5940 6270 6600