

30-005-61798

STATE OF NEW MEXICO  
ENERGY AND MINERALS DEPARTMENT

## OIL CONSERVATION DIVISION

P. O. BOX 2088

SANTA FE, NEW MEXICO 87501

Form C-101  
Revised 10-1-78

NO. OF COPIES RECEIVED	
DISTRIBUTION	
SANTA FE	1
FILE	1
U.S.G.S.	2
LAND OFFICE	1
OPERATOR	1

OCT 13 1982

O. C. D.

5A. Indicate Type of Lease

STATE ☒ FEDERAL ☐

5. State Oil &amp; Gas Lease No.

9576

## APPLICATION FOR PERMIT TO DRILL, DEEPEN, OR PLUG BACK

1a. Type of Work

b. Type of Well

DRILL ☒DEEPEN ☐PLUG BACK ☐OIL WELL ☐GAS WELL ☒

OTHER

SINGLE ZONE ☒MULTIPLE ZONE ☐

2. Name of Operator

MEG Petroleum Corporation

3. Address of Operator

949 Turner Street San Angelo, Texas 76903

4. Location of Well

UNIT LETTER K LOCATED 1900 FEET FROM THE South LINE

AND 1900 FEET FROM THE West LINE OF SEC. 36 TWP. 8S RGE. 22E NMPM

7. Unit Agreement Name

8. Farm or Lease Name

Hub State

9. Well No.

#1

10. Field and Pool or Wildcat

X Wildcat

12. County

Chaves

19. Proposed Depth

4,000'

19A. Formation

Abo

20. Rotary or C.T.

Rotary

1. Elevations (Show whether DF, RT, etc.)

4179' GL

21A. Kind &amp; Status Plug. Bond

\$50,000 blanket-current Arroyo Drilling

21B. Drilling Contractor

22. Approx. Date Work will start

December 17, 1982

## PROPOSED CASING AND CEMENT PROGRAM

SIZE OF HOLE	SIZE OF CASING	WEIGHT PER FOOT	SETTING DEPTH	SACKS OF CEMENT	EST. TOP
12 1/4	8 5/8	24#	1,400'	1400	Surface
7 7/8	4 1/2	10.5#	3,400'	1000	2500'

Blowout Prevention: Arroyo Rig, Reagan Hydril 5,000# with Baker closing unit has choke and kill manifold with bleed off line. If necessary, we have Schaffer Type E 5,000# 11" 1500 series B.O.P. 2 stage (pipe and blind rams) with Payne 3-stage closing unit. Also kill and choke manifold.

Mud Program: 0-600', spud with fresh water. Allow native viscosity to build to 30-34. Use Visbestos for hole sweeps if needed for additional hole cleaning. Control seepage with paper. 600-3000', drill out from surface casing circulating reserve pit with fresh water. Add 300 to 500 bbls of brine water at 2000' to help prevent leaching of salt zones. Maintain 9.0-10.0 pH with lime. Maintain the volume low to allow native viscosity to build to 30-34. 3000'-TD, return to working pits with existing fluid. Mix caustic soda for a 10-10.5 pH, and starch to reduce filtrate to 10cc or less. Add 3-5% diesel. At 3,500', increase viscosity to 40-45 with salt gel. Increase viscosity to 100 or greater to log or test.

APPROVAL VALID FOR 180 DAYS  
PERMIT EXPIRES 4-15-83  
UNLESS DRILLING UNDERWAY

BOVE SPACE DESCRIBE PROPOSED PROGRAM: IF PROPOSAL IS TO DEEPEN OR PLUG BACK, GIVE DATA ON PRESENT PRODUCTIVE ZONE AND PROPOSED NEW PRODUCTIVE ZONE. GIVE BLOWOUT PREVENTER PROGRAM, IF ANY.

by certify that the information above is true and complete to the best of my knowledge and belief.

ed Tan Title Vice President Date October 12, 1982

(This space for State Use)

ROVED BY Mr. William OIL AND GAS INSPECTOR

DITIONS OF APPROVAL, IF ANY:

Notify N.M.O.C.C. in sufficient

time to witness cementing

DATE

OCT 15 1982

All distances must be from the outer boundaries of the Section.

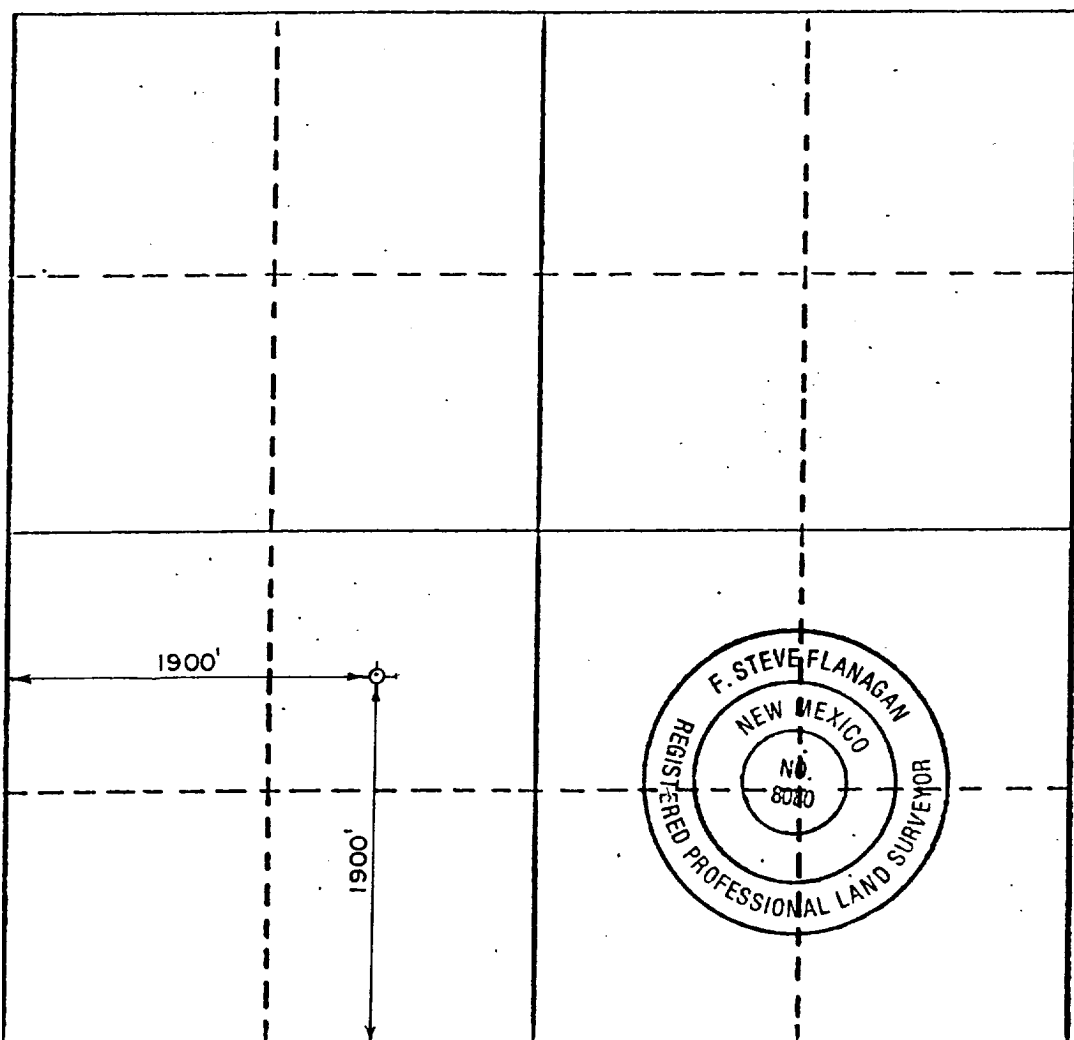
Operator <b>MEG PETROLEUM CO.</b>		Lease <b>HUB STATE</b>		Well No. <b>1</b>
Unit Letter <b>K</b>	Section <b>36</b>	Township <b>8S</b>	Range <b>22E</b>	County <b>CHAVES</b>
Actual Footage Location of Well: <b>1900</b> feet from the <b>South</b> line and <b>1900</b> feet from the <b>West</b> line				
Ground Level Elev. <b>4179'</b>	Producing Formation <b>Abo</b>	Pool <b>Pecos Slope West Field</b>		Dedicated Acreage: <b>160</b> Acres

1. Outline the acreage dedicated to the subject well by colored pencil or hachure marks on the plat below.
2. If more than one lease is dedicated to the well, outline each and identify the ownership thereof (both as to working interest and royalty).
3. If more than one lease of different ownership is dedicated to the well, have the interests of all owners been consolidated by communitization, unitization, force-pooling, etc?

☐ Yes ☐ No If answer is "yes," type of consolidation \_\_\_\_\_

If answer is "no," list the owners and tract descriptions which have actually been consolidated. (Use reverse side of this form if necessary.) \_\_\_\_\_

No allowable will be assigned to the well until all interests have been consolidated (by communitization, unitization, forced-pooling, or otherwise) or until a non-standard unit, eliminating such interests, has been approved by the Division.



CERTIFICATION

I hereby certify that the information contained herein is true and complete to the best of my knowledge and belief.

Name Theodore J. Swiderski  
Position Vice President  
Company MEG Petroleum Corporation  
Date October 12, 1982

I hereby certify that the well location shown on this plat was plotted from field notes of actual surveys made by me or under my supervision, and that the same is true and correct to the best of my knowledge and belief.

Date Surveyed October 4, 1982  
Registered Professional Engineer and/or Land Surveyor

F. Steve Flanagan  
Certificate No. 8080