

Form 3160-3
(November 1983)
(formerly 9-331C)

NM Oil Cons. Commission
Drawer DD

Artesia, NM 88210

UNITED STATES
DEPARTMENT OF THE INTERIOR
BUREAU OF LAND MANAGEMENT

RECEIVED
SUBMIT IN PLICATE
(Other instructions on reverse side)

30-005-63677
Form approved.
Budget Bureau No. 1004-0136
Expires August 31, 1985

FEB 28 '89

APPLICATION FOR PERMIT TO DRILL, DEEPEN, OR PLUG BACK

1a. TYPE OF WORK

DRILL ☒

DEEPEN ☐

PLUG BACK ☐

b. TYPE OF WELL

OIL WELL ☐

GAS WELL ☒

OTHER ☐

SINGLE ZONE ☐

2. NAME OF OPERATOR

McClellan Oil Corporation

3. ADDRESS OF OPERATOR

P. O. Drawer 730 Roswell, NM 88202

4. LOCATION OF WELL (Report location clearly and in accordance with any State requirements.)

At surface

1500' FSL & 660' FWL

At proposed prod. zone

same

14. DISTANCE IN MILES AND DIRECTION FROM NEAREST TOWN OR POST OFFICE*

18 miles northeast of Roswell, NM

10. DISTANCE FROM PROPOSED*

LOCATION TO NEAREST

PROPERTY OR LEASE LINE, FT.

(Also to nearest drlg. unit line, if any)

660'

16. NO. OF ACRES IN LEASE

1872.48

17. NO. OF ACRES ASSIGNED

TO THIS WELL

160

18. DISTANCE FROM PROPOSED LOCATION*

TO NEAREST WELL, DRILLING, COMPLETED,

OR APPLIED FOR, ON THIS LEASE, FT.

2054'

19. PROPOSED DEPTH

4600'

20. ROTARY OR CABLE TOOLS

Rotary

21. ELEVATIONS (Show whether DF, RT, GR, etc.)

3676' GL

22. APPROX. DATE WORK WILL START*

March 15, 1989

23.

PROPOSED CASING AND CEMENTING PROGRAM

SIZE OF HOLE	SIZE OF CASING	WEIGHT PER FOOT	SETTING DEPTH	QUANTITY OF CEMENT
12 1/4"	8 5/8"	23#	975'	450 sx class "C" circulated
7 7/8"	4 1/2"	10.5#	4600'	350 sx " "

Mud Program:

Drill to top of Abo with fresh water. Mud up 100' above Abo with 9.5 ppg wt.,
40 Vis. mud and 15 cc water loss.

BOP Specification:

Will install and test daily a 3000# wp Shaffer Type E double hydraulic BOP with 4"
pipe and blind rams with koomeg closing unit.

Gas is dedicated.

IN ABOVE SPACE DESCRIBE PROPOSED PROGRAM: If proposal is to deepen or plug back, give data on present productive zone and proposed new productive zone. If proposal is to drill or deepen directionally, give pertinent data on subsurface locations and measured and true vertical depths. Give blowout preventer program, if any.

24. Agent for:
McClellan Oil Corporation
SIGNED [Signature] TITLE Area Manager DATE February 7, 1989

(This space for Federal or State office use)

PERMIT NO.

APPROVAL DATE

S/Phil Kirk

Area Manager

FEB 23 1989

APPROVED BY

TITLE

DATE

CONDITIONS OF APPROVAL, IF ANY:

APPROVAL OF THIS APPLICATION DOES NOT WARRANT OR
CERTIFY THAT THE APPLICANT HOLDS LEGAL OR EQUITABLE
TITLE TO THOSE RIGHTS IN THE SUBJECT LEASE WHICH WOULD
ENTITLE THE APPLICANT TO CONDUCT OPERATIONS THEREON.

PLEASE BE ADVISED THAT THERE WILL BE NO EXCAVATION
OF FEDERALLY OWNED MINERAL MATERIAL FOR CONSTRUCTION
OF THE ACCESS ROAD OR PAD WITHOUT PAYMENT
IN ADVANCE.

18 U.S.C. Section 1001, makes it a crime for any person knowingly and willfully to make to any department or agency of the
United States any false, fictitious or fraudulent statements or representations as to any matter within its jurisdiction.

STATE OF NEW MEXICO
ENERGY AND MINERALS DEPARTMENT

OIL CONSERVATION DIVISION
P. O. BOX 2088
SANTA FE, NEW MEXICO 87501

Form C-102
Revised 10-1-70

All distances must be from the outer boundaries of the Section.

Operator McClellan Oil Corporation		Lease M M Federal		Well No. 11	
Unit Letter L	Section 30	Township 9 South	Range 26 East	County Chaves	
Actual Footage Location of Well: 1500 feet from the South line and 660 feet from the West line					
Ground Level Elev. 3676'	Producing Formation Abo		Pool S. Pecos Slope Abo	Dedicated Acreage 160 Acres	

1. Outline the acreage dedicated to the subject well by colored pencil or hatchure marks on the plat below.
2. If more than one lease is dedicated to the well, outline each and identify the ownership thereof (both as to working interest and royalty).
3. If more than one lease of different ownership is dedicated to the well, have the interests of all owners been consolidated by communitization, unitization, force-pooling, etc?

☐ Yes ☐ No If answer is "yes," type of consolidation _____

If answer is "no," list the owners and tract descriptions which have actually been consolidated. (Use reverse side of this form if necessary.) _____

No allowable will be assigned to the well until all interests have been consolidated (by communitization, unitization, forced-pooling, or otherwise) or until a non-standard unit, eliminating such interests, has been approved by the Division.

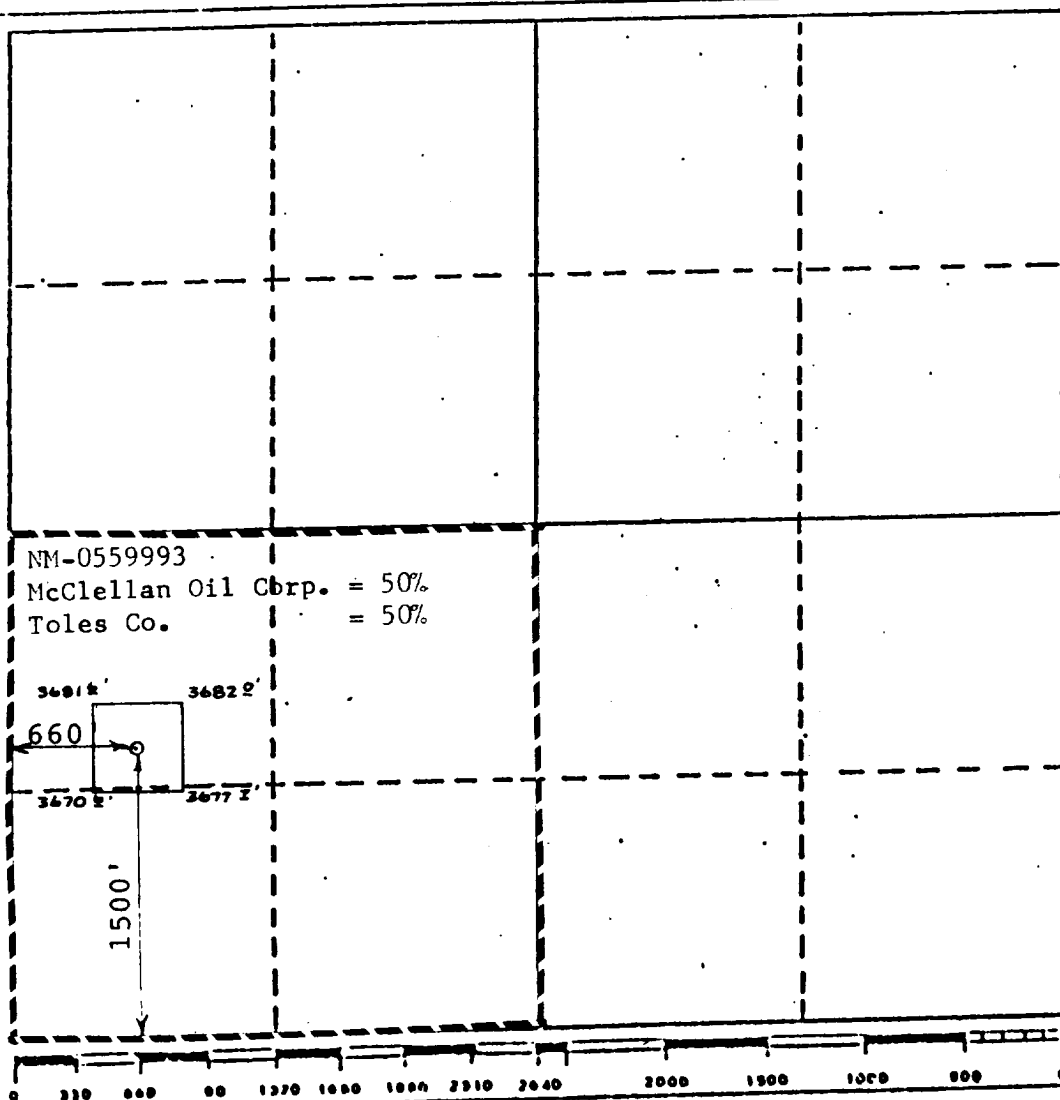
CERTIFICATION

I hereby certify that the information contained herein is true and complete to the best of my knowledge and belief.

Name
George R. Smith
Position
Agent for:
Company
McClellan Oil Corporation
Date
February 7, 1989

I hereby certify that the well location shown on this plat was plotted from field notes of actual surveys made by me or under my supervision, and that the same is true and correct to the best of my knowledge and belief.

January 17, 1989
Date Surveyed
P. R. Patton
Registered Professional Engineer and/or Land Surveyor
8112
Certificate No.





THE
LIBRARY
OF THE
MUSEUM
OF
COMPARATIVE ZOOLOGY
AND
ANATOMY
HARVARD UNIVERSITY
CAMBRIDGE, MASS.

1914
1915
1916
1917
1918
1919
1920
1921
1922
1923
1924
1925
1926
1927
1928
1929
1930
1931
1932
1933
1934
1935
1936
1937
1938
1939
1940
1941
1942
1943
1944
1945
1946
1947
1948
1949
1950
1951
1952
1953
1954
1955
1956
1957
1958
1959
1960
1961
1962
1963
1964
1965
1966
1967
1968
1969
1970
1971
1972
1973
1974
1975
1976
1977
1978
1979
1980
1981
1982
1983
1984
1985
1986
1987
1988
1989
1990
1991
1992
1993
1994
1995
1996
1997
1998
1999
2000
2001
2002
2003
2004
2005
2006
2007
2008
2009
2010
2011
2012
2013
2014
2015
2016
2017
2018
2019
2020
2021
2022
2023
2024
2025

APPLICATION FOR DRILLING

McCLELLAN OIL CORPORATION
MM Federal, Well No. 11
1500' FSL & 660' FWL, Sec. 30-T9S-R26E
Chaves County, New Mexico
Lease No.: NM-0559993
(Development Well)



In conjunction with Form 3160-3, Application for Permit to Drill subject well, McClellan Oil Corporation submits the following items of pertinent information in accordance with BLM requirements:

1. The geologic surface formation is recent Permian with quaternary alluvium and other surficial deposits.

2. The estimated tops of geologic markers are as follows:

San Andres	730'	Abo	4032'
Glorieta	1815'	T.D.	4600'
Tubb	3300'		

3. The estimated depths at which water, oil or gas formations are anticipated to encountered:

Water: Surface water between 100' to 300'.

Oil: None expected.

Gas: In the Abo below 4032'.

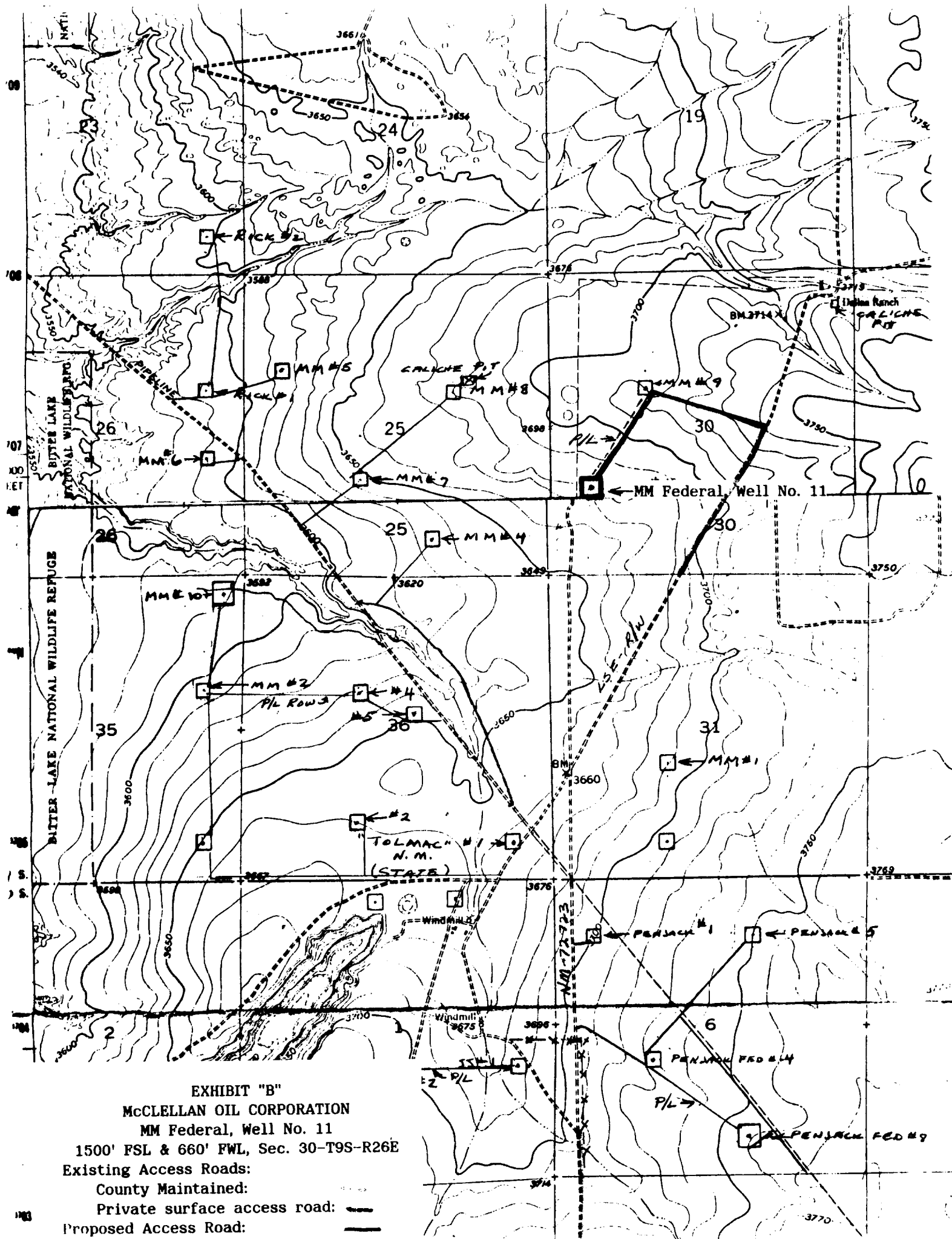
4. Proposed Casing Program: See Form 3160-3.
5. Pressure Control Equipment: See Form 3160-3 and Exhibit "E".
6. Mud Program: See Form 3160-3.
7. Auxiliary Equipment: Blowout preventer, gas detector, kelly cock, pit level monitor, flow sensors and stabbing valve.
8. Testing, Logging, and Coring Program:

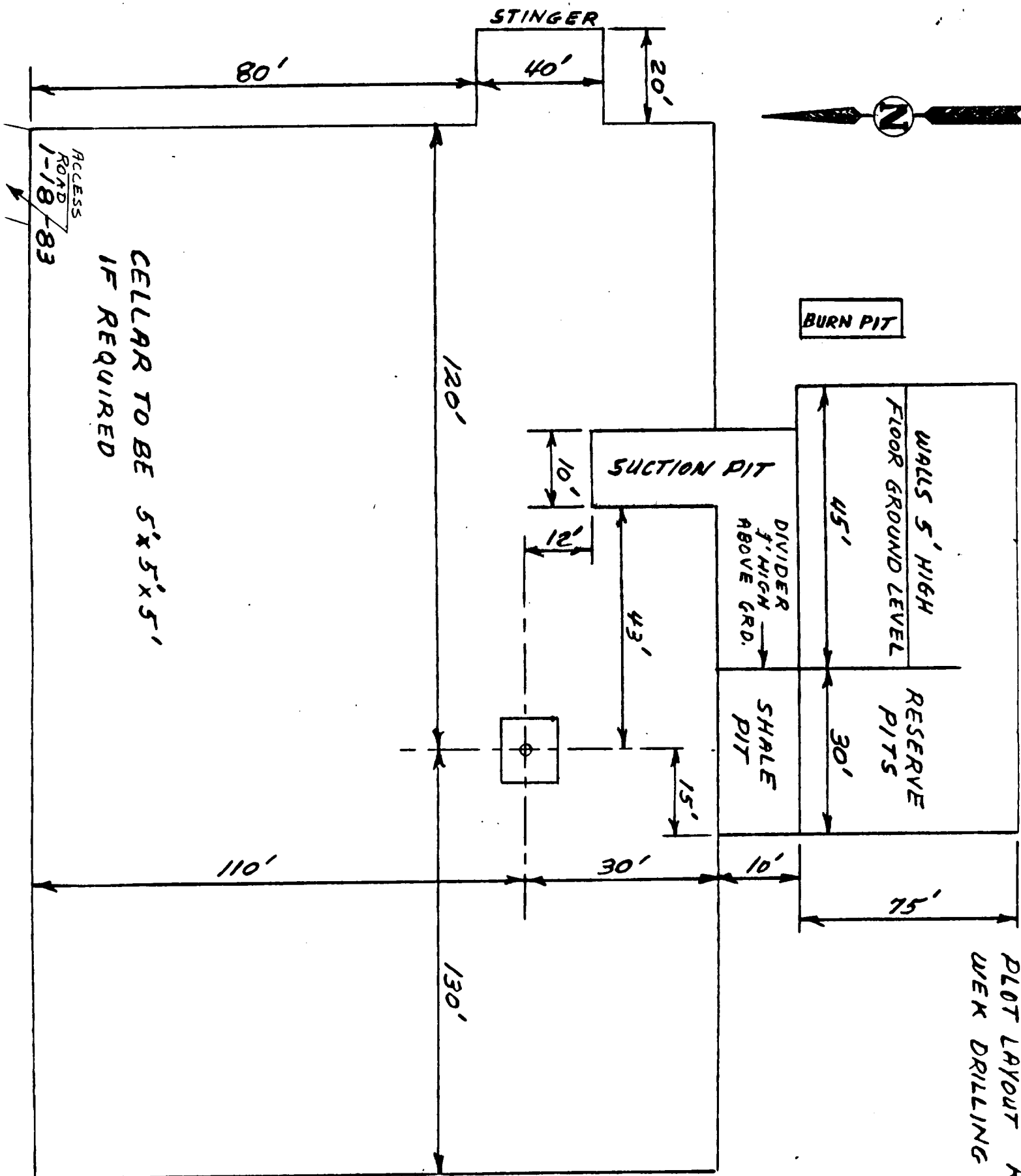
Drill Stem Tests: None planned.

Logging: From surface Casing to T.D.: G/R, CNL-LDT, DLL,

Coring: None planned.

9. No abnormal pressures or temperatures are anticipated. In the event abnormal pressures are encountered the proposed mud program will be modified.
10. Anticipated starting date: March 15, 1989.
Anticipated completion of drilling operations: Approximately 35 days.





PLOT LAYOUT RIG 3
WEEK DRILLING

EXHIBIT "D"
McCLELLAN OIL CORPORATION
MM Federal, Well No. 11
Rig Layout