

| | |
|------------------------|-----|
| NO. OF COPIES RECEIVED | 5 |
| DISTRIBUTION | |
| SANTA FE | 1 |
| FILE | 1 ✓ |
| U.S.G.S. | 2 |
| LAND OFFICE | |
| OPERATOR | 1 |

RECEIVED
NEW MEXICO OIL CONSERVATION COMMISSION

OCT 19 1977

O. C. C.
ARTESIA OFFICE

30-015-22325
Form C-101
Revised 1-1-65

| | |
|--------------------------------|---|
| 5A. Indicate Type of Lease | |
| STATE <input type="checkbox"/> | FEE <input checked="" type="checkbox"/> |

5. State Oil & Gas Lease No.

APPLICATION FOR PERMIT TO DRILL, DEEPEN, OR PLUG BACK

| | | | |
|---|--|--|---|
| 1a. Type of Work | | 7. Unit Agreement Name | |
| b. Type of Well OIL WELL <input checked="" type="checkbox"/> GAS WELL <input type="checkbox"/> OTHER <input type="checkbox"/> | | 8. Farm or Lease Name Roberson | |
| 2. Name of Operator ORLA PETCO, INC. | | 9. Well No. #1 | |
| 3. Address of Operator P.O. Box 953, Midland, Texas 79702 | | 10. Field and Pool, or Wildcat Undesignated (Delaware) | |
| 4. Location of Well UNIT LETTER F LOCATED 2310 FEET FROM THE North LINE AND 2310 FEET FROM THE West LINE OF SEC. 6 TWP. 23-S RGE. 28-E NMPM | | 12. County Eddy | |
| 19. Proposed Depth 2700' | | 19A. Formation Delaware | 20. Rotary or C.T. Cable Tool |
| 21. Elevations (Show whether DF, RT, etc.) | 21A. Kind & Status Plug, Bond one well plugging bond | 21B. Drilling Contractor Hopi Drilling Company | 22. Approx. Date Work will start October 20, 1977 |

PROPOSED CASING AND CEMENT PROGRAM

| SIZE OF HOLE | SIZE OF CASING | WEIGHT PER FOOT | SETTING DEPTH | SACKS OF CEMENT | EST. TOP |
|--------------|----------------|-----------------|---------------|-----------------|--------------|
| 10 3/4" | 8 5/8" | 24# | 375± | 250sx | (circulated) |
| 8" | 4 1/2" | 10.5# | 2700± | 250sx | |

Propose to drill to TD of 2700' to test the Delaware Sand, utilizing Cable Tool Rig. If production is indicated, will run 4 1/2" casing in attempt to complete.

Blow-out preventer: Blind Ram Cable Tool Control Head.

APPROVAL VALID
FOR 90 DAYS UNLESS
DRILLING COMMENCED,

EXPIRES 1-24-78

IN ABOVE SPACE DESCRIBE PROPOSED PROGRAM: IF PROPOSAL IS TO DEEPEN OR PLUG BACK, GIVE DATA ON PRESENT PRODUCTIVE ZONE AND PROPOSED NEW PRODUCTIVE ZONE. GIVE BLOWOUT PREVENTER PROGRAM, IF ANY.

I hereby certify that the information above is true and complete to the best of my knowledge and belief.

Signed Juanita M. C. Patcher Title Agent Date October 14, 1977

(This space for State Use)

APPROVED BY W. A. Gressett TITLE SUPERVISOR, DISTRICT II DATE OCT 24 1977

CONDITIONS OF APPROVAL, IF ANY:

Excluded to
surface behind 8 7/8" casing

RECEIVED
OCT 21 1977
O.C.C.
ARTESIA, OFFICE

NEW MEXICO OIL CONSERVATION COMMISSION
WELL LOCATION AND ACREAGE DEDICATION PLAT

Form C-102
Supersedes C-128
Effective 1-1-65

All distances must be from the outer boundaries of the Section.

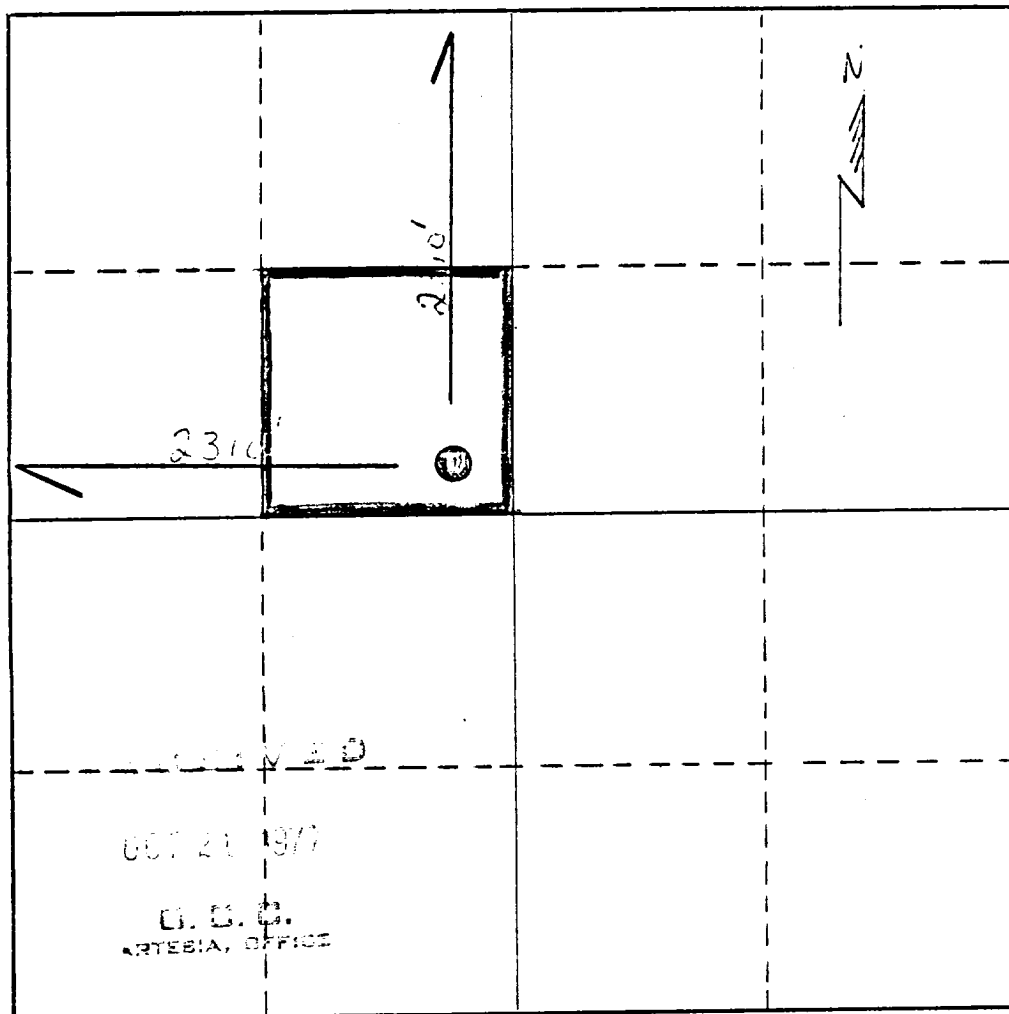
| | | | | |
|--|--|---|---|------------------------------|
| Operator Orla Petco, Inc | | Lease Roberson | | Well No. #1 |
| Unit Letter F | Section 6 | Township 23- S | Range 28-E | County Eddy County |
| Actual Footage Location of Well: 2310 feet from the North line and 2310 feet from the West line | | | | |
| Ground Level Elev. 3029 | Producing Formation Delaware | Pool Undesignated (Delaware) | Dedicated Acreage: 40 Acres Acres | |

1. Outline the acreage dedicated to the subject well by colored pencil or hachure marks on the plat below.
2. If more than one lease is dedicated to the well, outline each and identify the ownership thereof (both as to working interest and royalty).
3. If more than one lease of different ownership is dedicated to the well, have the interests of all owners been consolidated by communitization, unitization, force-pooling, etc?

☐ Yes ☐ No If answer is "yes," type of consolidation _____

If answer is "no," list the owners and tract descriptions which have actually been consolidated. (Use reverse side of this form if necessary.) _____

No allowable will be assigned to the well until all interests have been consolidated (by communitization, unitization, forced-pooling, or otherwise) or until a non-standard unit, eliminating such interests, has been approved by the Commission.



CERTIFICATION

I hereby certify that the information contained herein is true and complete to the best of my knowledge and belief.

Name
A.H. Hedden
Position
Vice-President
Company
Orla Petco, Inc.
Date
October 14, 1977

I hereby certify that the well location shown on this plat was plotted from field notes of actual surveys made by me or under my supervision, and that the same is true and correct to the best of my knowledge and belief.

October 14, 1977

Date Surveyed
October 14, 1977
Registered Professional Engineer
and/or Land Surveyor

N. M. 220.

Certificate No.

