

UNITED STATES
DEPARTMENT OF THE INTERIOR
BUREAU OF LAND MANAGEMENT

APPLICATION FOR PERMIT TO DRILL, DEEPEN, OR PLUG BACK

1a. TYPE OF WORK

DRILL ☒

PLUG BACK ☐

b. TYPE OF WELL

OIL
WELL ☒

GAS
WELL ☐

OTHER

O. C. D.

SINGLE
ZONE ☒

MULTIPLE
ZONE ☐

2. NAME OF OPERATOR

J. Ray Stewart

3. ADDRESS OF OPERATOR

P.O. Box 451, Midland, Texas 79702

4. LOCATION OF WELL (Report location clearly and in accordance with any State requirements*)

At surface

660' FNL & 660' FEL NE/4 NE/4 Unit letter A

At proposed prod. zone Same

14. DISTANCE IN MILES AND DIRECTION FROM NEAREST TOWN OR POST OFFICE*

9 1/2 air miles southeast of Malaga, N.M.

15. DISTANCE FROM PROPOSED*

LOCATION TO NEAREST
PROPERTY OR LEASE LINE, FT.
(Also to nearest drilg. unit line, if any)

660'

18. DISTANCE FROM PROPOSED LOCATION*
TO NEAREST WELL, DRILLING, COMPLETED,
OR APPLIED FOR, ON THIS LEASE, FT.

P/A well
330' NW

16. NO. OF ACRES IN LEASE

640

19. PROPOSED DEPTH

3800'

17. NO. OF ACRES ASSIGNED
TO THIS WELL

40

20. ROTARY OR CABLE TOOLS

Rotary

21. ELEVATIONS (Show whether DF, RT, GR, etc.)

3192.8' GR

22. APPROX. DATE WORK WILL START*

May 25, 1984

23. PROPOSED CASING AND CEMENTING PROGRAM

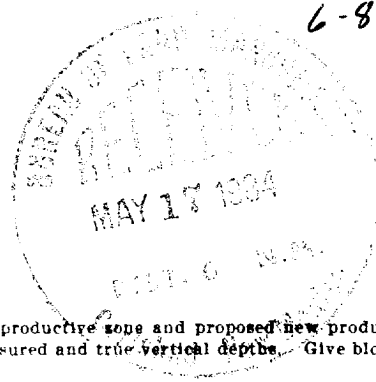
SIZE OF HOLE	SIZE OF CASING	WEIGHT PER FOOT	SETTING DEPTH	QUANTITY OF CEMENT
12 1/4"	8 5/8"	24.0#	750'±	520 sx(Circulate)
7 7/8"	4 1/2"	10.5#	3800'±	200 sx

Proposed plans are to drill through the Delaware formation and test for possible commercial production of oil and gas.

BOF sketch is attached.

ILLEGIBLE

Post-ADJ
ID-122/PBk
6-8-84



IN ABOVE SPACE DESCRIBE PROPOSED PROGRAM: If proposal is to deepen or plug back, give data on present productive zone and proposed new productive zone. If proposal is to drill or deepen directionally, give pertinent data on subsurface locations and measured and true vertical depths. Give blowout preventer program, if any.

24.

SIGNED

Jerry W. Franklin

TITLE

Agent

DATE

5/13/84

(This space for Federal or State office use)

PERMIT NO.

APPROVAL DATE

APPROVED BY

TITLE

AREA MANAGER

CARLSBAD RESOURCE AREA

CONDITIONS OF APPROVAL, IF ANY:

5-29-84
APPROVAL SUBJECT TO
GENERAL REQUIREMENTS AND
SPECIAL STIPULATIONS
ATTACHED

*See Instructions On Reverse Side

NEW MEXICO OIL CONSERVATION COMMISS. T 4
WELL LOCATION AND ACREAGE DEDICATION PLAT

Form C-102
Supersedes C-128
Effective 1-1-65

All distances must be from the outer boundaries of the Section

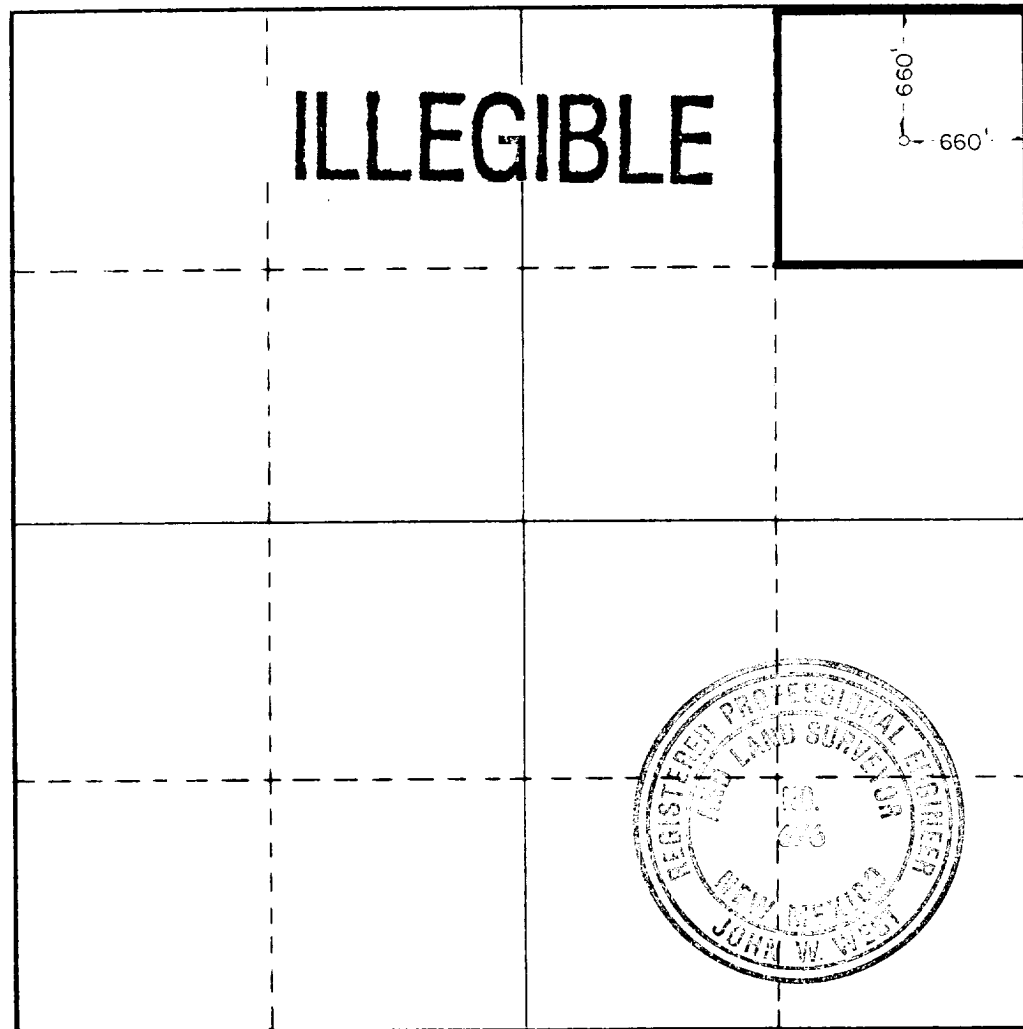
Operator J. RAY STEWART			Lease POKER LAKE UNIT		Well No. 65
Well Letter A	Section 19	Township 25 SOUTH	Range 30 EAST	County EDDY	
Actual Footage Location of Well: <div style="display: flex; justify-content: space-between;"> 660 feet from the NORTH line and 660 feet from the EAST line </div>					
Ground Level Elev. 3192.8	Producing Formation Delaware		Pool Corral Canyon		Dedicated Acreage: 40 Acres

1. Outline the acreage dedicated to the subject well by colored pencil or hachure marks on the plat below.
2. If more than one lease is dedicated to the well, outline each and identify the ownership thereof (both as to working interest and royalty).
3. If more than one lease of different ownership is dedicated to the well, have the interests of all owners been consolidated by communitization, unitization, force-pooling, etc?

☐ Yes ☐ No If answer is "yes," type of consolidation _____

If answer is "no," list the owners and tract descriptions which have actually been consolidated. (Use reverse side of this form if necessary.) _____

No allowable will be assigned to the well until all interests have been consolidated (by communitization, unitization, forced-pooling, or otherwise) or until a non-standard unit, eliminating such interests, has been approved by the Commission.



CERTIFICATION

I hereby certify that the information contained herein is true and complete to the best of my knowledge and belief.

Name
Terry W. Franklin

Position
Agent

Company
J. Ray Stewart

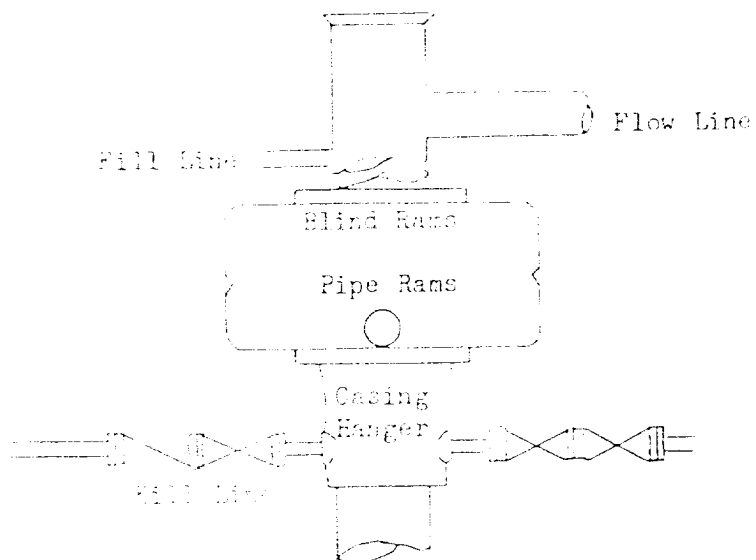
Date
5/14/84

I hereby certify that the well location shown on this plat was plotted from field notes of actual surveys made by me or under my supervision, and that the same is true and correct to the best of my knowledge and belief.

Date Surveyed
MAY 11, 1984

Registered Professional Engineer and/or Land Surveyor

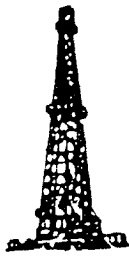
Certificate No. **JOHN W. WEST, 676**
RONALD J. EIDSON, 3239



ILLEGIBLE

BOP STACK

4000 psi working pressure



Oil & Gas Administrative Services

TERRY W. FRANKLIN

P.O. Box 2664
Roswell, NM 88201

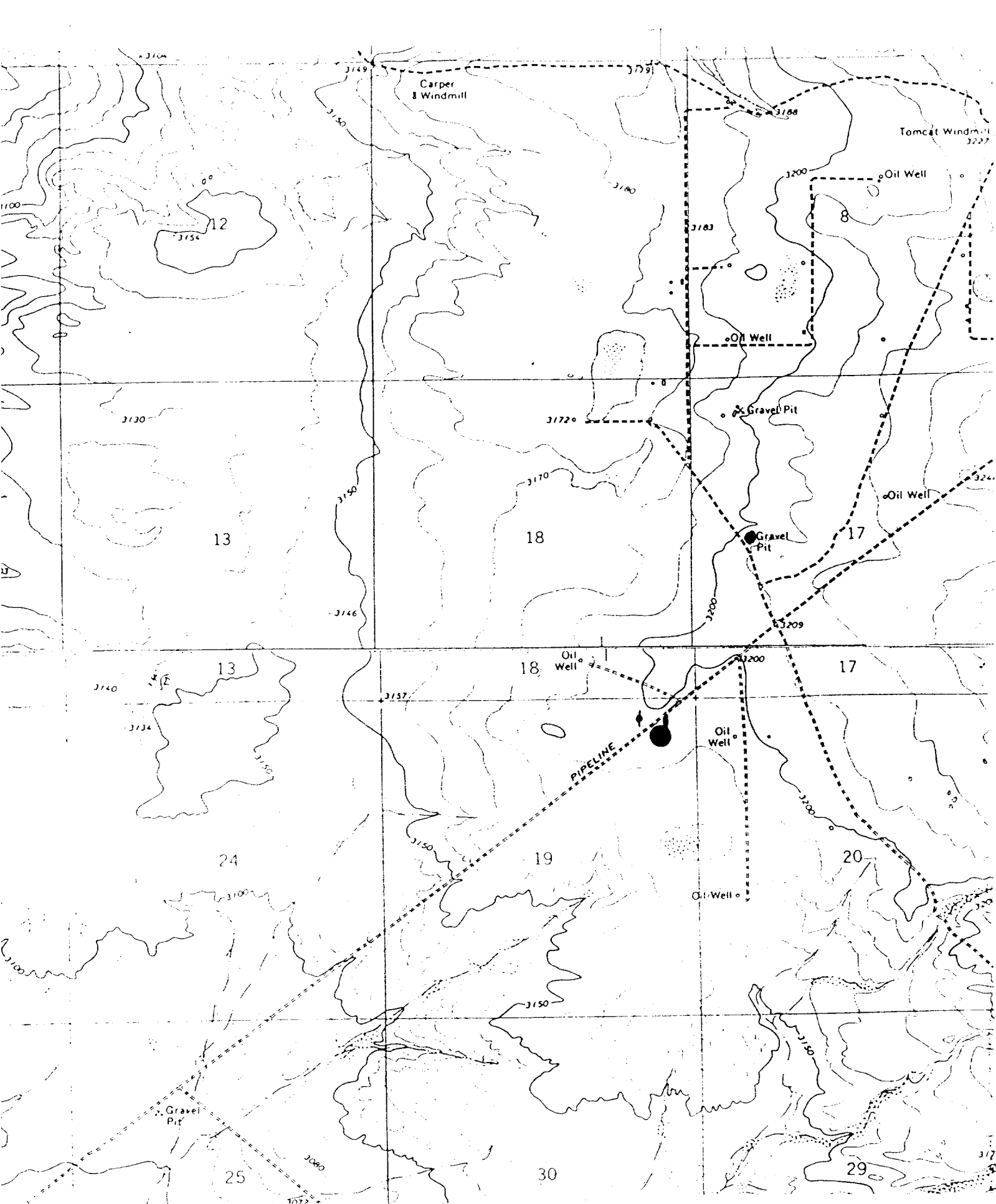
SUPPLEMENTAL DRILLING DATA

J. Ray Stewart
Poker Lake Unit No. 65
660' FNL & 660' FEL
Sec. 19, T25S, R30E
Eddy County, N.M.
Lease No. LC-070341

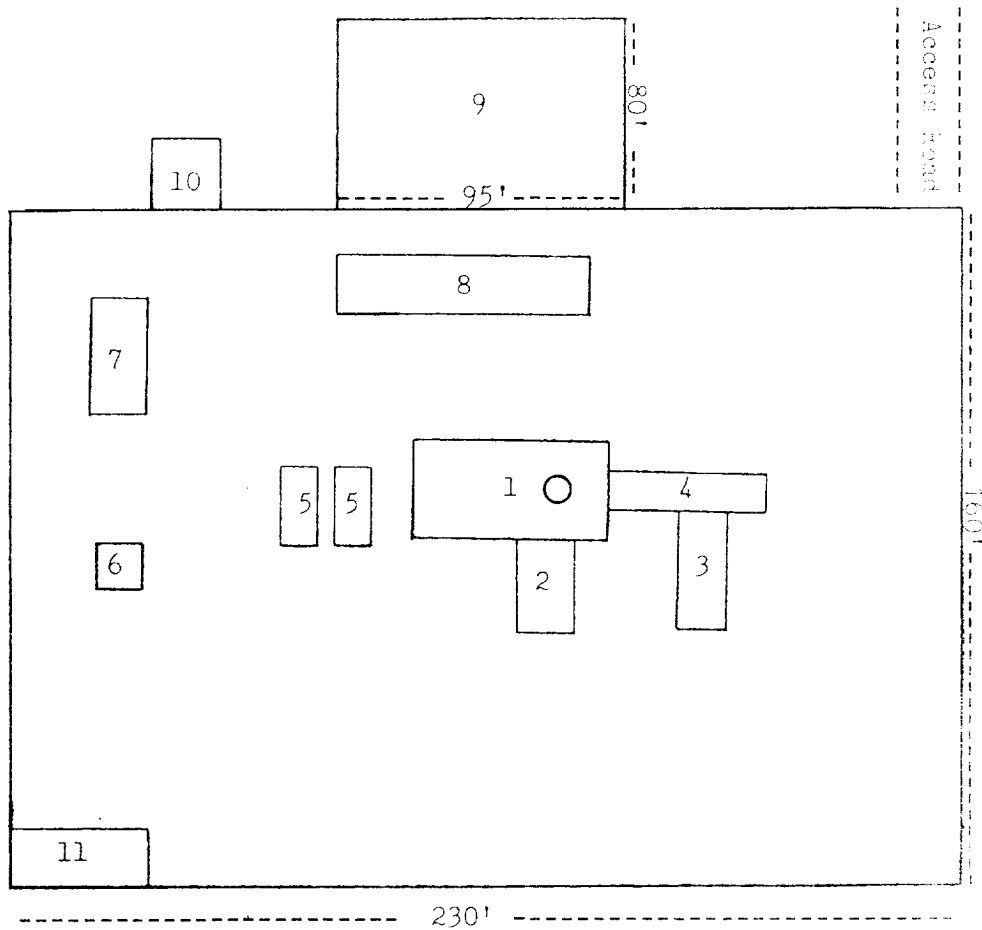
1. Surface Formation: Aeolian
2. Estimated Geological Marker Tops:

Rustler	670'	Lamar	3600'
Salado	2850'	Ramsey	3628'
3. Mineral Bearing Formation: Delaware-oil.
4. Proposed Casing and Cement Program:
 - 8 5/8" Casing - Set approximately 750', 24.0#, J-55, ST&C casing and cement with 520 sx cement to surface.
 - 4 1/2" Casing - Set 10.5#, K-55, ST&C casing to 3800' and cement with 200 sx cement to isolate all oil, gas, and water zones.
5. Pressure Control Equipment: A 3000 psi working pressure BOP will be installed after 8 5/8" casing is set and cemented.
6. Proposed Mud Program:

0-750'	Fresh water gel with lime.
750-3500'	Brine water.
3500-3800'	Brine water with starch to control water loss to less than 20 cc.
7. Auxiliary Equipment: A kelly cock will be installed on the rig floor while drilling operations are in progress.
8. Testing, Logging, and Coring Program:
 - Testing: None anticipated.
 - Logging: Gamma ray, Sonic log.
 - Coring : None anticipated.



1
N



- | | |
|-----------------|-------------------|
| 1. Substructure | 7. Water Tank |
| 2. Doghouse | 8. Working Pits |
| 3. Piperacks | 9. Reserve Pit |
| 4. Catwalk | 10. Trash Pit |
| 5. Mud Pumps | 11. Trailer House |
| 6. Light Plant | |

ILLEGIBLE