

RECEIVED BY

MAR 13 1985

## APPLICATION FOR PERMIT TO DRILL, DEEPEN, OR PLUG BACK

1a. TYPE OF WORK\*

ARTESIA, OFFICE DRILL ☒DEEPEN ☐PLUG BACK ☐

b. TYPE OF WELL

OIL WELL ☒GAS WELL ☐

OTHER

SINGLE ZONE ☒MULTIPLE ZONE ☐

2. NAME OF OPERATOR

Blazer Oil and Gas, Inc. ✓

3. ADDRESS OF OPERATOR

P.O. Box 692, Tatum, New Mexico 88267

4. LOCATION OF WELL (Report location clearly and in accordance with any State requirements.)\*

At surface

533' FNL &amp; 521' FWL of Section

At proposed prod. zone

14. DISTANCE IN MILES AND DIRECTION FROM NEAREST TOWN OR POST OFFICE\*

17 air miles east, northeast of Artesia, New Mexico

15. DISTANCE FROM PROPOSED\*

LOCATION TO NEAREST PROPERTY OR LEASE LINE, FT. (Also to nearest drlg. unit line, if any)

521'

(521')

18. DISTANCE FROM PROPOSED LOCATION\*

TO NEAREST WELL, DRILLING, COMPLETED, OR APPLIED FOR, ON THIS LEASE, FT.

4450'

16. NO. OF ACRES IN LEASE

80

19. PROPOSED DEPTH

3500'

17. NO. OF ACRES ASSIGNED TO THIS WELL

40

20. ROTARY OR CABLE TOOLS

rotary

21. ELEVATIONS (Show whether DF, RT, GR, etc.)

3638 GR

22. APPROX. DATE WORK WILL START\*

April 1, 1985

23.

## PROPOSED CASING AND CEMENTING PROGRAM

SIZE OF HOLE	SIZE OF CASING	WEIGHT PER FOOT	SETTING DEPTH	QUANTITY OF CEMENT
12 1/4"	8 5/8"	24#	250'	sufficient to circulate
7 7/8"	5 1/2"	14#	3500'	150 sacks

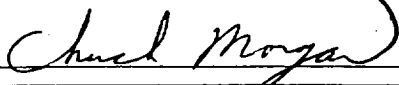
Pay zone will be perforated and stimulated as needed for optimum production.

Attached are: 1) Well Location & Acreage Dedication Plat  
 2) Supplemental Drilling Data  
 3) Surface Use Plan

IN ABOVE SPACE DESCRIBE PROPOSED PROGRAM: If proposal is to deepen or plug back, give data on present productive zone and proposed new productive zone. If proposal is to drill or deepen directionally, give pertinent data on subsurface locations and measured and true vertical depths. Give blowout preventer program, if any.

24.

SIGNED



TITLE

Consultant

DATE

2/26/85

(This space for Federal or State office use)

PERMIT NO.

APPROVAL DATE

APPROVED BY

TITLE

DATE

3-11-85

CONDITIONS OF APPROVAL, IF ANY:

APPROVAL SUBJECT TO  
 GENERAL REQUIREMENTS AND  
 SPECIAL STIPULATIONS

\*See Instructions On Reverse Side

Distances must be from the outer boundaries of Section.

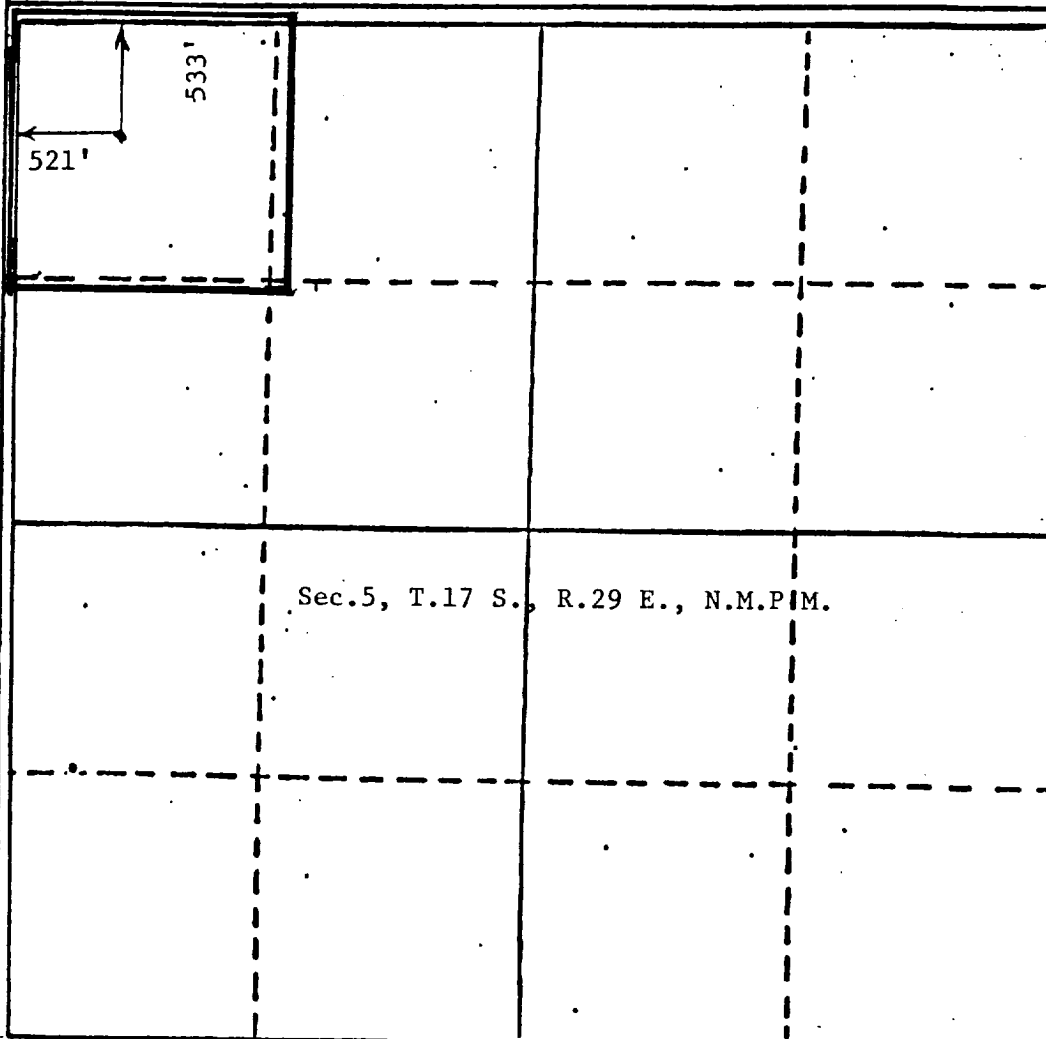
Operator Blazer Oil & Gas			Lease Hodges Federal			Well No. 142
Unit Letter D	Section 5	Township 17 South	Range 29 East	County Eddy		
Actual Footage Location of Well						
533 feet from the North		line and		521 feet from the West		line
Ground Level Elev. 3638	Producing Formation Q-Gb-SA		Pool Cave - G-S-A		Dedicated Acreage 40 Acres	

1. Outline the acreage dedicated to the subject well by colored pencil or hatchure marks on the plat below.
2. If more than one lease is dedicated to the well, outline each and identify the ownership thereof (both as to working interest and royalty).
3. If more than one lease of different ownership is dedicated to the well, have the interests of all owners been consolidated by communitization, unitization, force-pooling, etc?

☐ Yes ☐ No If answer is "yes," type of consolidation \_\_\_\_\_

If answer is "no," list the owners and tract descriptions which have actually been consolidated. (Use reverse side of this form if necessary.) \_\_\_\_\_

No allowable will be assigned to the well until all interests have been consolidated (by communitization, unitization, forced-pooling, or otherwise) or until a non-standard unit, eliminating such interests, has been approved by the Division



## CERTIFICATION

I hereby certify that the information contained herein is true and complete to the best of my knowledge and belief.

*Chuck Morgan*

Name

Chuck Morgan

Position

Consultant

Company

Blazer Oil and Gas, Inc.

Date

2/26/85

I hereby certify that the well location shown on this plat was plotted from field notes of actual surveys made by me or under my supervision, and that the same is true and correct to the best of my knowledge and belief.

Date Signed

February 27, 1985

Registered Professional Engineer  
and/or Land Surveyor

*John D. Jaques*, P.E. & L.S.

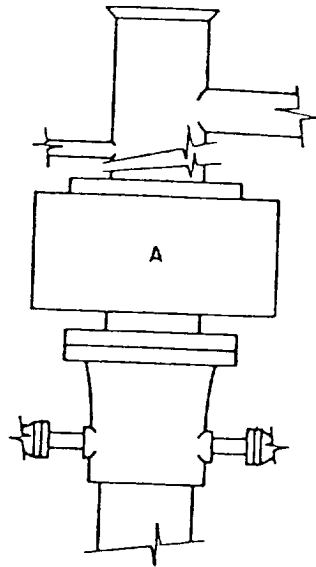
Certificate No. PROFESSIONAL

6290

5330/5210

BLOWOUT PREVENTER ARRANGEMENT

Blazer Oil and Gas, Inc.  
Well #4 Hodges Federal  
NW $\frac{1}{4}$ NW $\frac{1}{4}$  Sec. 5-17S-29E



ARRANGEMENT A

## SUPPLEMENTAL DRILLING DATA

BLAZER OIL AND GAS, INC.  
WELL #4 HODGES FEDERAL  
NW $\frac{1}{4}$ NW $\frac{1}{4}$  SEC. 5-17S-29E  
EDDY COUNTY, NEW MEXICO

1. SURFACE FORMATION: Recent.

2. ESTIMATED TOPS OF GEOLOGIC MARKERS:

Yates	850'	Grayburg	2050'
Seven Rivers	1120'	San Andres	2490'
Queen	1630'	Lovington Sand	2510'

3. ANTICIPATED POROSITY ZONES:

Water - Above 200'  
Oil - 1800' - 3500'

4. CASING DESIGN:

<u>Size</u>	<u>Interval</u>	<u>Weight</u>	<u>Grade</u>	<u>Joint</u>
8 5/8"	0 - 250'	24.0#	K-55	STC
5 1/2"	0 - 3500'	14.0#	K-55	STC

5. SURFACE CONTROL EQUIPMENT: A double ram-type or annular BOP will be used.

6. CIRCULATING MEDIUM: Brine water conditioned as necessary for control of viscosity and water loss. Fresh water will be used for surface hole.

7. AUXILIARY EQUIPMENT: None considered necessary.

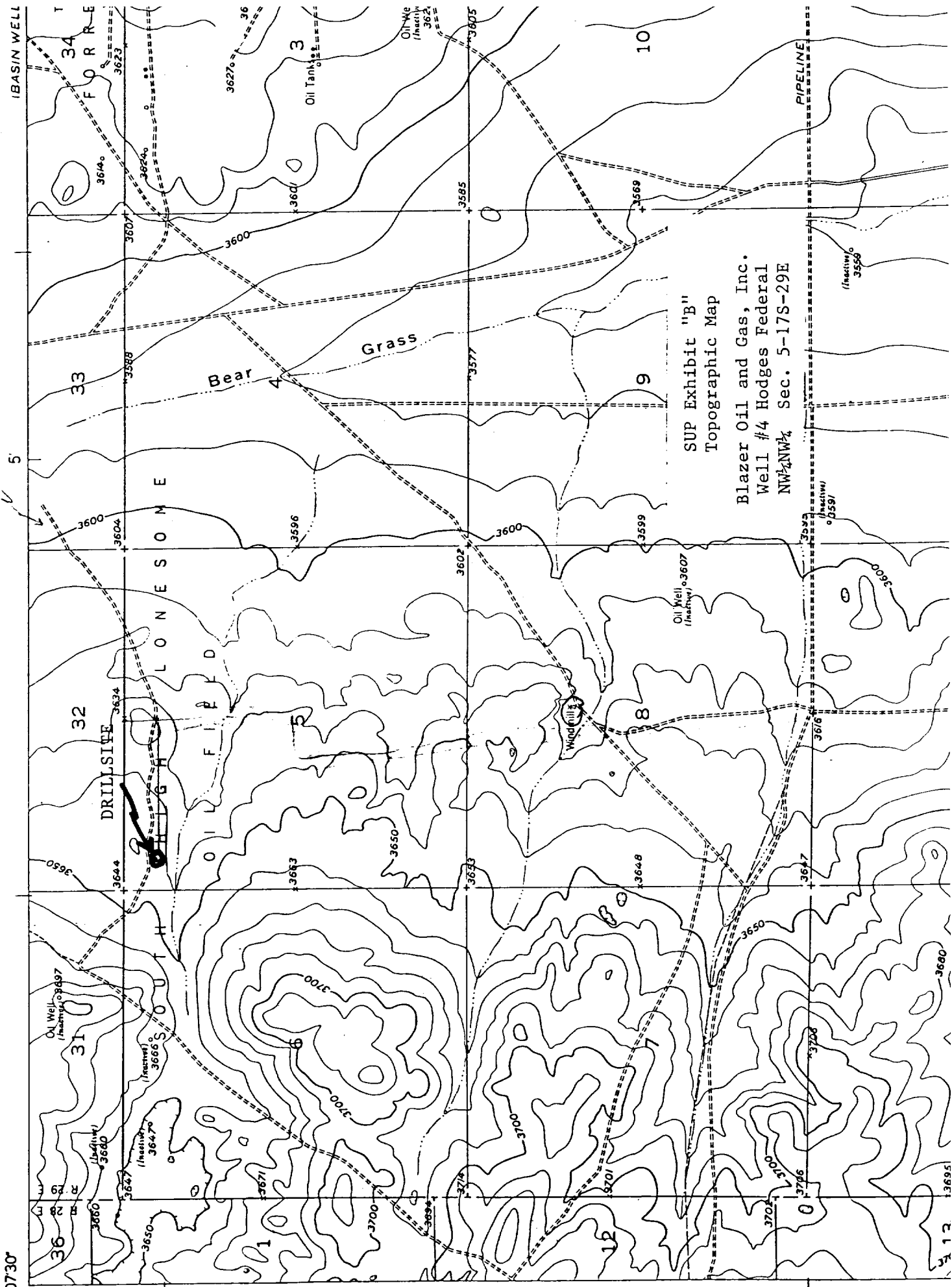
8. TESTING, LOGGING AND CORING PROGRAMS: No coring or DST's are planned. Logs will include a Gamma Ray Neutron log.

9. ABNORMAL PRESSURES, TEMPERATURES OR GASES: None anticipated.

10. ANTICIPATED STARTING DATE: It is planned that operations will commence about April 1, 1985. Drilling, completion, and testing should take two to four weeks.

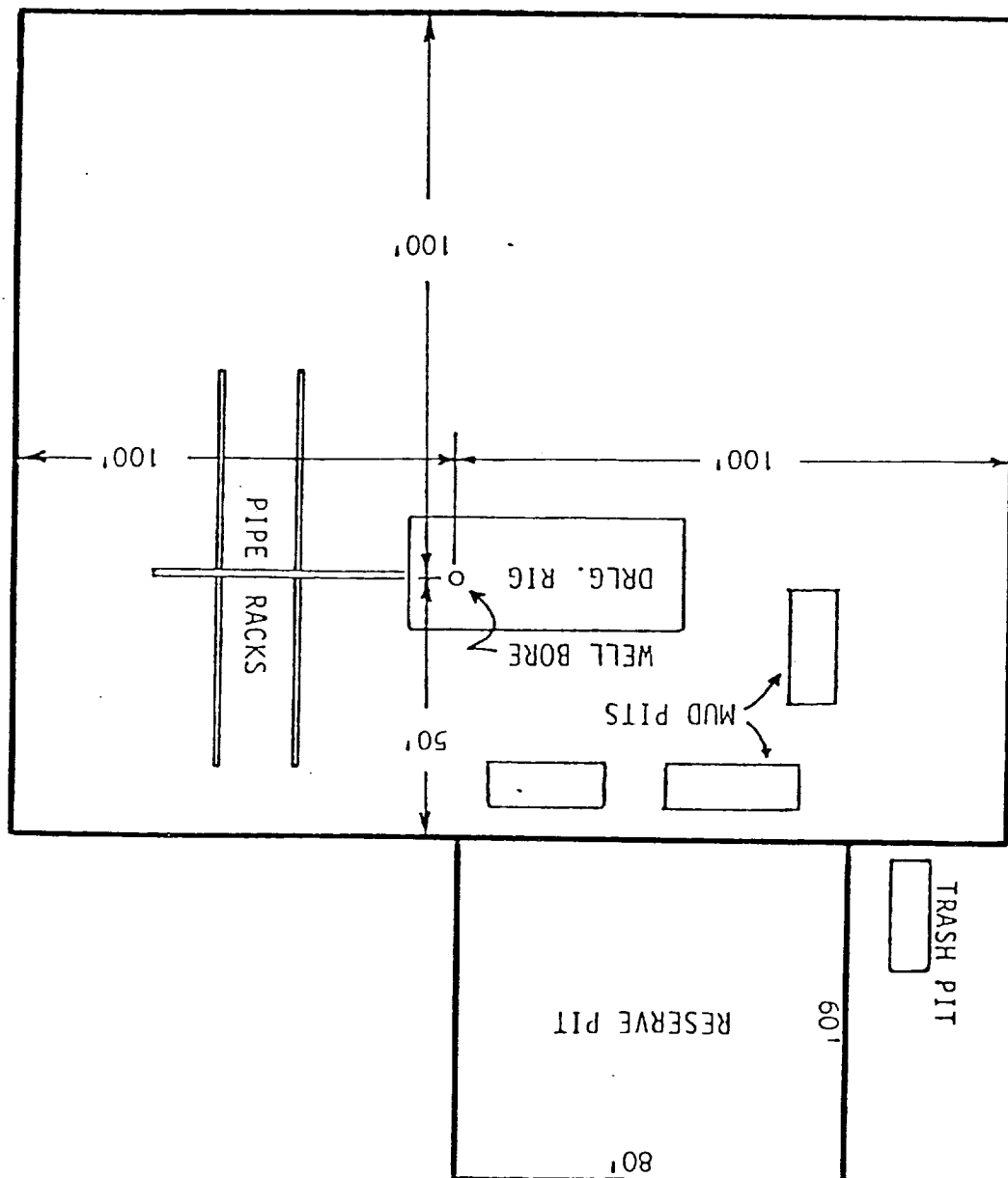
UNITED STATES  
DEPARTMENT OF THE INTERIOR  
GEOLOGICAL SURVEY

104°07'30"  
2°52'30"



SUP Exhibit "B"  
Topographic Map  
Blazer Oil and Gas, Inc.  
Well #4 Hodges Federal  
NW $\frac{1}{4}$  NW $\frac{1}{4}$  Sec. 5-17S-29E

1  
2



SUP Exhibit "D"  
Sketch of Well Pad  
Blazer Oil and Gas, Inc.  
Well #4 Hodges Federal  
NW $\frac{1}{4}$ NW $\frac{1}{4}$  Sec. 5-17S-29E