

Form 3160-3  
 (November 1983)  
 (formerly 9-331C)

SUBMIT IN DUPLICATE  
 (Other instructions on reverse side)

UNITED STATES  
 DEPARTMENT OF THE INTERIOR  
 BUREAU OF LAND MANAGEMENT

**RECEIVED BY**  
**MANAGEMENT**  
**ARTESIA OFFICE**

**APPLICATION FOR PERMIT TO DRILL, DEEPEN, OR PLUG BACK**

1a. TYPE OF WORK  
 O. C. D. DRILL  DEEPEN  PLUG BACK

b. TYPE OF WELL  
 WELL  OIL WELL  OTHER

2. NAME OF OPERATOR  
 Pool Oil Company

3. ADDRESS OF OPERATOR  
 P. O. Box 2837, Roswell, New Mexico, 88201

4. LOCATION OF WELL (Report location clearly and in accordance with any State requirements.)  
 At surface: 990' FWL & 2310' FSL  
 At proposed prod. zone: Same  
*M.L.-NWSW*

14. DISTANCE IN MILES AND DIRECTION FROM NEAREST TOWN OR POST OFFICE:  
 Approx. 8.85 Mi. NW of Maljamar, NM

15. DISTANCE FROM PROPOSED LOCATION TO NEAREST PROPERTY OR LEASE LINE, FT. (Also to nearest drlg. unit line, if any): 330'

18. DISTANCE FROM PROPOSED LOCATION TO NEAREST WELL, DRILLING, COMPLETED, OR APPLIED FOR, ON THIS LEASE, FT.: 1246'

21. ELEVATIONS (Show whether DF, RT, GR, etc.): 4079 GR

5. LEASE DESIGNATION AND SERIAL NO.  
 NM 54425

6. IF INDIAN, ALLOTTEE OR TRIBE NAME

7. UNIT AGREEMENT NAME

8. FARM OR LEASE NAME  
 Ronadero 9 USA

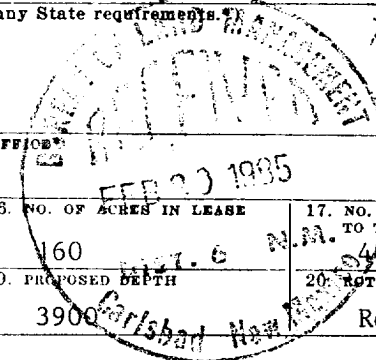
9. WELL NO.  
 #2

10. FIELD AND POOL, OR WILDCAT  
 N. Square Lake North, Grbg/S

11. SEC., T., R., M., OR BLK. AND SURVEY OR AREA  
 Sec. 9, T16S, R31E

12. COUNTY OR PARISH  
 Eddy

13. STATE  
 NM



16. NO. OF ACRES IN LEASE: 160

17. NO. OF ACRES ASSIGNED TO THIS WELL: 160

19. PROPOSED DEPTH: 3900

20. ROTARY OR CABLE TOOLS: Rotary

22. APPROX. DATE WORK WILL START:  
 March 1, 1985

23. PROPOSED CASING AND CEMENTING PROGRAM

SIZE OF HOLE	SIZE OF CASING	WEIGHT PER FOOT	SETTING DEPTH	QUANTITY OF CEMENT
12 1/4"	8 5/8"	24 #	350	350 sx <b>CIRCULATE</b>
7 7/8"	5 1/2"	15.5 #	3900	450 sx

Pool intends to drill this well to ± 3900' to evaluate the Queen, Grayburg, and San Andres formations.

Attachments: Survey Plat ( C-102 )  
 Supplemental Drilling Data  
 Surface Use Plan

Mud Program: See Exhibit D

BOP Program: A Shaffer 900 double ram 10" BOP will be used.

*Posted ID1  
 API # NL  
 3-22-85*

IN ABOVE SPACE DESCRIBE PROPOSED PROGRAM: If proposal is to deepen or plug back, give data on present productive zone and proposed new productive zone. If proposal is to drill or deepen directionally, give pertinent data on subsurface locations and measured and true vertical depths. Give blowout preventer program, if any.

24. SIGNED Fred F. Pollock TITLE Engineer DATE 2-15-85

(This space for Federal or State office use)

PERMIT NO. \_\_\_\_\_ APPROVAL DATE \_\_\_\_\_  
 APPROVED BY L. Mark Hollen TITLE \_\_\_\_\_ DATE 3-18-85  
 CONDITIONS OF APPROVAL, IF ANY: \_\_\_\_\_

APPROVAL SUBJECT TO  
 GENERAL REQUIREMENTS AND  
 SPECIAL STIPULATIONS

\*See Instructions On Reverse Side

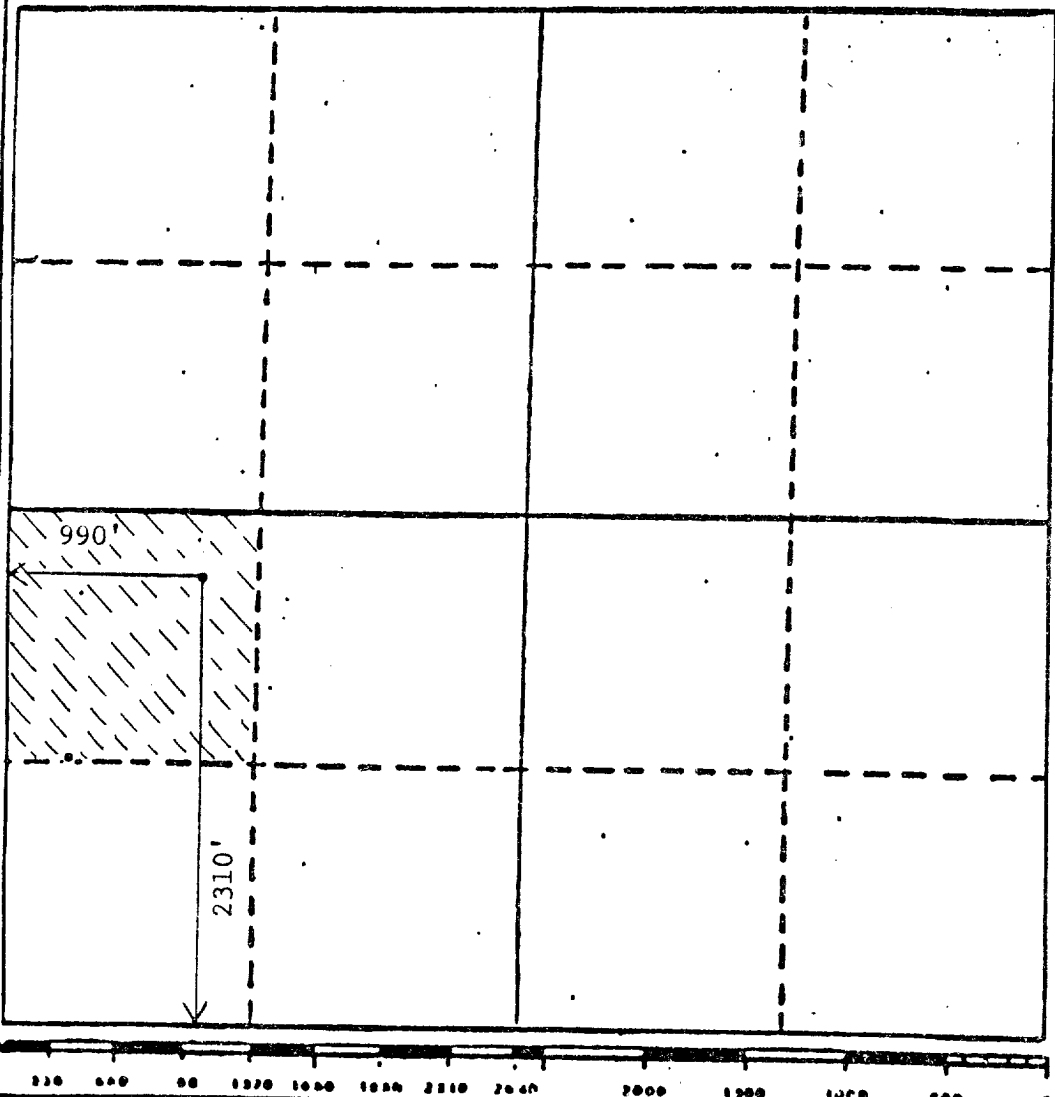
All distances must be from the outer boundaries of the Section.

Operator Pool Oil Company		Lease Ronadero 9 USA		Well No. #2
Unit Letter L	Section 9	Township 16 South	Range 31 East	County Eddy
Actual Wellbore Location of Well: 990 feet from the West line and 2310 feet from the South line				
Ground Level Elev. 4079	Producing Formation QN/GRBG/SA	Pool Square Lake North	Dedicated Acreage 40 Acres	

1. Outline the acreage dedicated to the subject well by colored pencil or hachure marks on the plat below.
2. If more than one lease is dedicated to the well, outline each and identify the ownership thereof (both as to working interest and royalty).
3. If more than one lease of different ownership is dedicated to the well, have the interests of all owners been consolidated by communitization, unitization, force-pooling, etc?  
 Yes     No    If answer is "yes," type of consolidation \_\_\_\_\_

If answer is "no," list the owners and tract descriptions which have actually been consolidated. (Use reverse side of this form if necessary.) \_\_\_\_\_

No allowable will be assigned to the well until all interests have been consolidated (by communitization, unitization, forced-pooling, or otherwise) or until a non-standard unit, eliminating such interests, has been approved by the Division



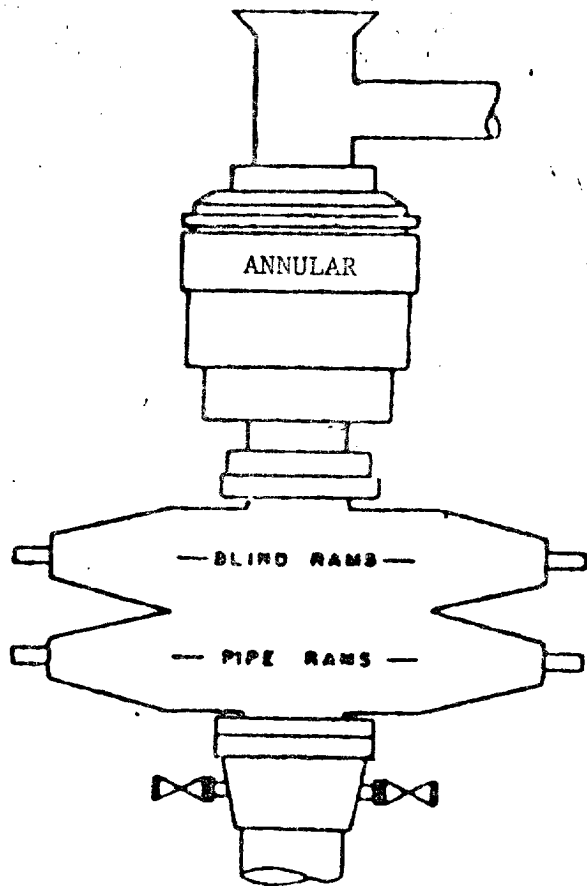
**CERTIFICATION**

*I hereby certify that the information contained herein is true and complete to the best of my knowledge and belief.*

Name: Fred F. Pool, III  
 Position: Engineer  
 Company: Pool Oil Company  
 Date: 2/11/85

*I hereby certify that the well location shown on this plat was plotted from field notes of actual surveys made by me or under my supervision, and that the same is true and correct to the best of my knowledge and belief.*

Date Employed: D. J. JAMES  
 February 12, 1985  
 Registered Professional Engineer and/or Land Surveyor  
 6290  
 John D. James, P.E. & L.S.  
 6290 PROFESSIONAL ENGINEER



REGAN TORUS ANNULAR TYPE

SHAFFER TYPE F.  
DOUBLE RAM  
SERIES 900

BLOWOUT PREVENTER STACK - 3000 psi W.P.

EXHIBIT E

SUPPLEMENTAL DRILLING DATA

POOL OIL COMPANY  
Ronadero USA 9-#2 Well  
990' FWL & 2310' FSL  
Section 9, T16S, R31E  
Eddy County, New Mexico

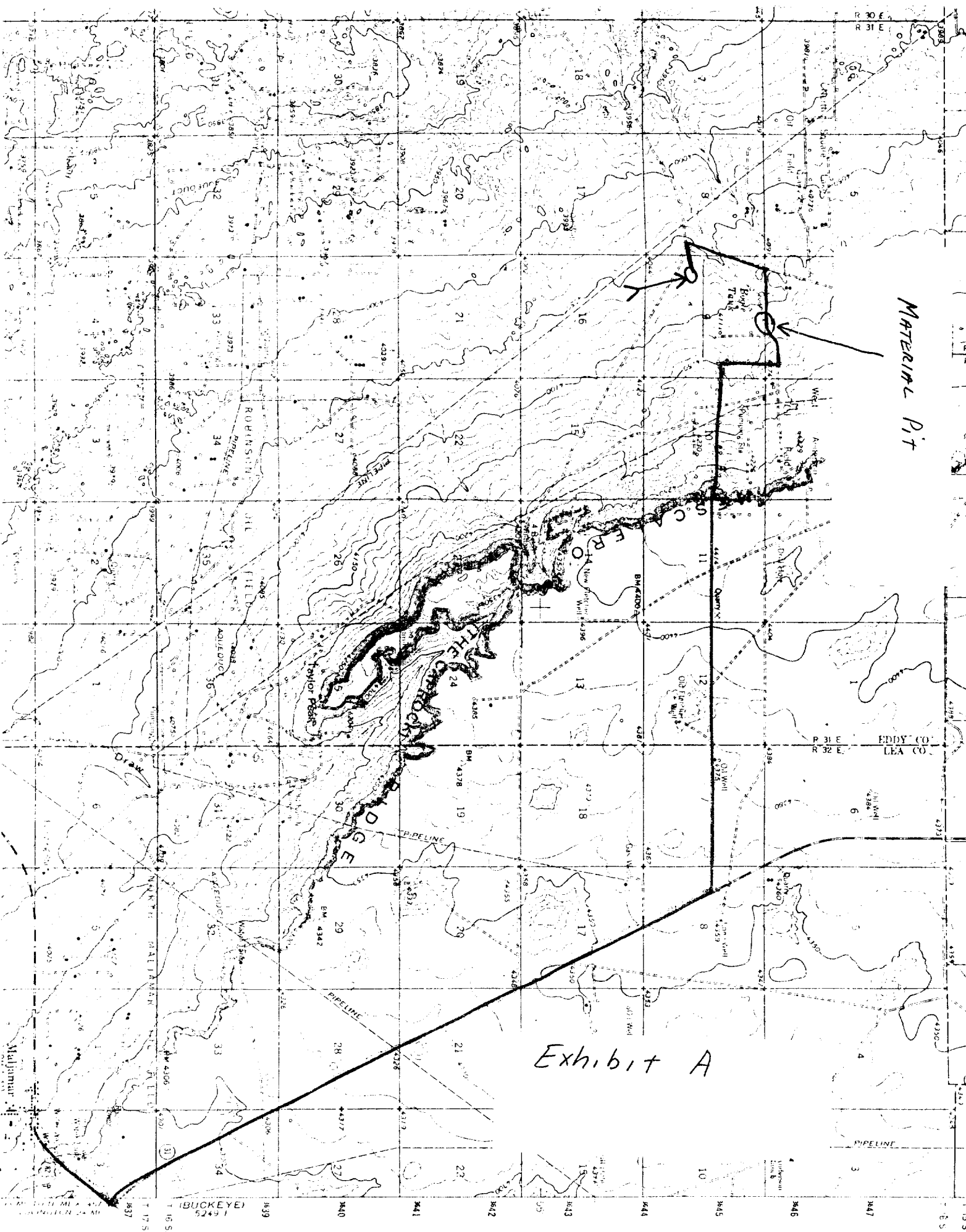
In conjunction with Form 3160-3 (formerly Form 9-331C), Application for Permit to Drill subject well, Pool Oil Company submits the following ten items of pertinent information in accordance with USGS requirements:

1. The geologic surface formation is quaternary.
2. The estimated tops of geologic markers are as follows:

Top Salt . . . . .	890
Base Salt . . . . .	1830
Yates . . . . .	2005
Seven Rivers . . . . .	2390
Queen . . . . .	2715
Penrose . . . . .	3000
Premier . . . . .	3440
Lovington Sand . . . . .	3550
3. The anticipated depths at which anticipated water, oil, or gas bearing formations are expected to be encountered:

Water:	approximately 265'
Oil or Gas:	Queen - approximately 2715
	Penrose - approximately 3000
	Premier - approximately 3440
	Lovington Sand - approximately 3550
4. Proposed Casing Program: see Form 3160-3
5. Pressure Control Equipment: see Exhibit E
6. Mud Program: see Exhibit D
7. Auxiliary Equipment: master valve on BOP
8. Testing, Logging, and Coring Programs:

No Drill Stem Tests are planned.
No Coring is planned.
Electric Log Program: Neutron Porosity Log
Dual Latero-log
9. No abnormal pressures or temperatures are anticipated.
10. Anticipated Starting Date: March 1, 1985.



MATERIAL PIT

Exhibit A

(BUCKEYE)  
5249 1

T 175 S  
T 185 S

T 185 S  
R 30 E  
R 31 E  
R 32 E

