

9/51

Form 9-221C  
(May 1983)  
RECEIVED BY  
NOV 20 1985

UNITED STATES  
DEPARTMENT OF THE INTERIOR  
GEOLOGICAL SURVEY

SUBMIT IN TRIPPLICATE  
NM Other instructions on reverse side  
Drawer DD  
Artesia, NM 88210

Form approved.  
Budget Bureau No. 42-R1425.

30-015-25491

APPLICATION FOR PERMIT TO DRILL, DEEPEN, OR PLUG BACK

TYPE OF WORK

DRILL ☒ DEEPEN ☐ PLUG BACK ☐

D. TYPE OF WELL

OIL WELL ☒ GAS WELL ☐ OTHER ☐

SINGLE ZONE ☒ MULTIPLE ZONE ☐

2. NAME OF OPERATOR

Marbob Energy Corporation

3. ADDRESS OF OPERATOR

P.O. Drawer 217, Artesia, NM 88210

4. LOCATION OF WELL (Report location clearly and in accordance with any State requirements.)

At surface 1195 FSL 1345 FEL

At proposed prod. zone Same

5. LEASE DESIGNATION AND SERIAL NO.  
LC-058362

6. IF INDIAN, ALLOTTEE OR TRIBE NAME

7. UNIT AGREEMENT NAME

8. FARM OR LEASE NAME  
Boyd Dodd

9. WELL NO.  
8

10. FIELD AND POOL, OR WILDCAT  
Grbg Jackson SR Q Gb SA

11. SEC., T., R., M., OR BLK. AND SURVEY OR AREA  
Sec. 11- T17S-R29E

12. COUNTY OR PARISH  
Eddy

13. STATE  
NM

14. DISTANCE IN MILES AND DIRECTION FROM NEAREST TOWN OR POST OFFICE

20 air miles east of Artesia, NM

15. DISTANCE FROM PROPOSED LOCATION TO NEAREST PROPERTY OR LEASE LINE, FT. (Also to nearest drig. unit line, if any)

1195'

16. NO. OF ACRES IN LEASE  
160

17. NO. OF ACRES ASSIGNED TO THIS WELL  
40

18. DISTANCE FROM PROPOSED LOCATION TO NEAREST WELL, DRILLING, COMPLETED, OR APPLIED FOR, ON THIS LEASE, FT.

600'

19. PROPOSED DEPTH  
4500'

20. ROTARY OR CABLE TOOLS  
Rotary

21. ELEVATIONS (Show whether DF, RT, GR, etc.)

3640.1 GR

22. APPROX. DATE WORK WILL START

11/25/85

23.

PROPOSED CASING AND CEMENTING PROGRAM

SIZE OF HOLE	SIZE OF CASING	WEIGHT PER FOOT	SETTING DEPTH	QUANTITY OF CEMENT
12 1/4"	8 5/8"	24.0#	350'	Sufficient to circulate
7 7/8"	5 1/2"	15.5#	4500'	1500 sax, to base of salt

Pay zone will be selectively perforated and stimulated as needed for optimum production.

- Attached are :
1. Location & acreage dedication plat
  2. Supplemental drilling data
  3. Surface use plan

Posted IDI,  
API, NL.  
11-22-85

IN ABOVE SPACE DESCRIBE PROPOSED PROGRAM: If proposal is to deepen or plug back, give data on present productive zone and proposed new productive zone. If proposal is to drill or deepen directionally, give pertinent data on subsurface locations and measured and true vertical depths. Give blowout preventer program, if any.

24.

SIGNED *R. J. Nettleton*

TITLE Production Clerk

DATE 11/7/85

(This space for Federal or State office use)

PERMIT NO.

APPROVAL DATE

APPROVED BY

TITLE

DATE 11-18-85

CONDITIONS OF APPROVAL, IF ANY:

Subject to  
Like Approval  
by State  
NSL-2184  
Appv. 11-12-85

\*See Instructions On Reverse Side

APPROVAL SUBJECT TO  
GENERAL REQUIREMENTS AND  
SPECIAL STIPULATIONS  
ATTACHED

NEW MEXICO OIL CONSERVATION COMMISSION  
WELL LOCATION AND ACREAGE DEDICATION PLAT

Form C-102  
Supersedes C-128  
Effective 1-1-65

All distances must be from the outer boundaries of the Section

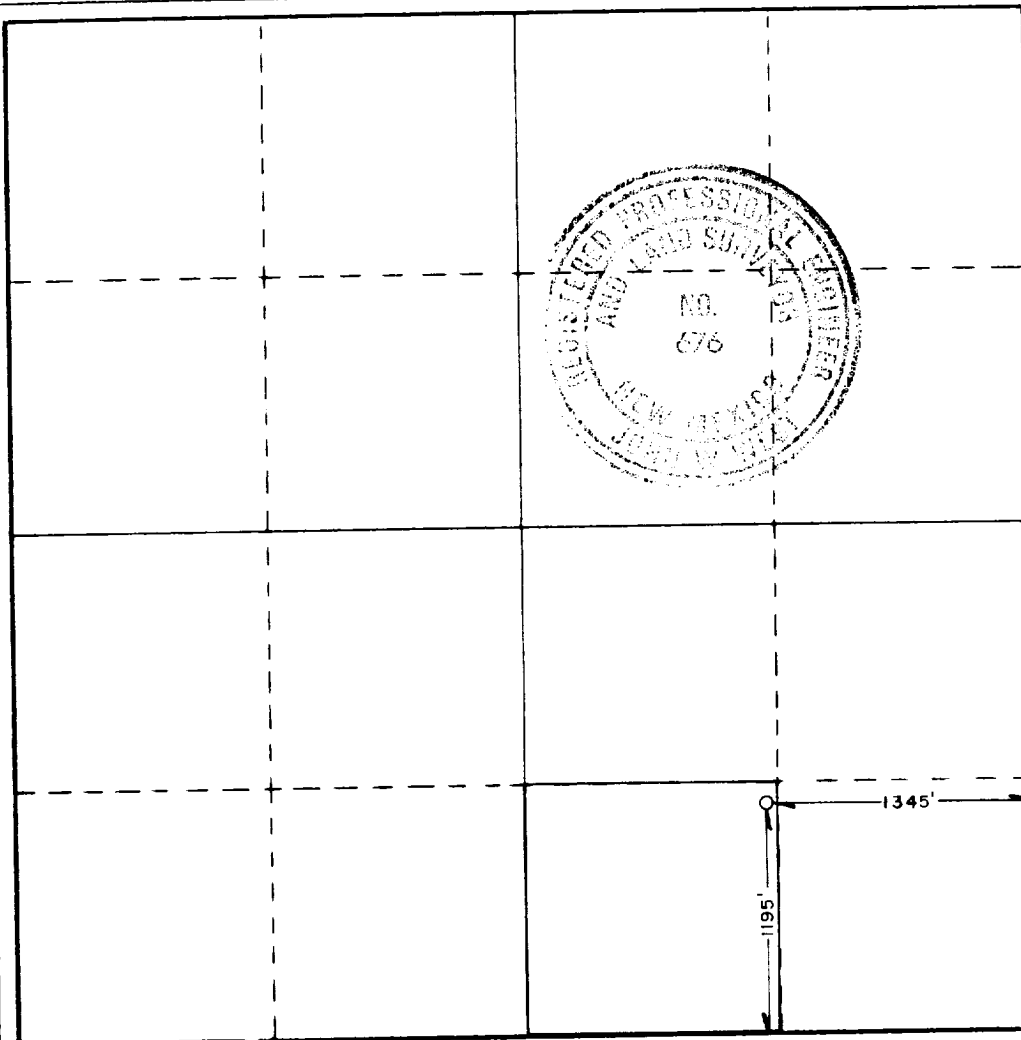
Operator MARBOB ENERGY CORP.		Lease BOYD DODD		Well No. 8
Tract Letter 0	Section 11	Township 17 SOUTH	Range 29 EAST	County EDDY
Actual Footage Location of Well: 1195 feet from the SOUTH line and 1345 feet from the EAST line				
Ground Level Elev. 3640.1'	Producing Formation San Andres	Pool Grbg Jackson SR Q Gb SA	Dedicated Acreage: 40 Acres	

1. Outline the acreage dedicated to the subject well by colored pencil or hachure marks on the plat below.
2. If more than one lease is dedicated to the well, outline each and identify the ownership thereof (both as to working interest and royalty).
3. If more than one lease of different ownership is dedicated to the well, have the interests of all owners been consolidated by communitization, unitization, force-pooling, etc?

☐ Yes ☐ No If answer is "yes," type of consolidation \_\_\_\_\_

If answer is "no," list the owners and tract descriptions which have actually been consolidated. (Use reverse side of this form if necessary.) \_\_\_\_\_

No allowable will be assigned to the well until all interests have been consolidated (by communitization, unitization, forced-pooling, or otherwise) or until a non-standard unit, eliminating such interests, has been approved by the Commission.



CERTIFICATION

I hereby certify that the information contained herein is true and complete to the best of my knowledge and belief.

*DeNette Morriss*

Name

DeNette Morriss

Position

Production Clerk

Company

Marbob Energy Corporation

Date

11/7/85

I hereby certify that the well location shown on this plat was plotted from field notes of actual surveys made by me or under my supervision, and that the same is true and correct to the best of my knowledge and belief.

Date Surveyed

NOVEMBER 4, 1985

Registered Professional Engineer and/or Land Surveyor

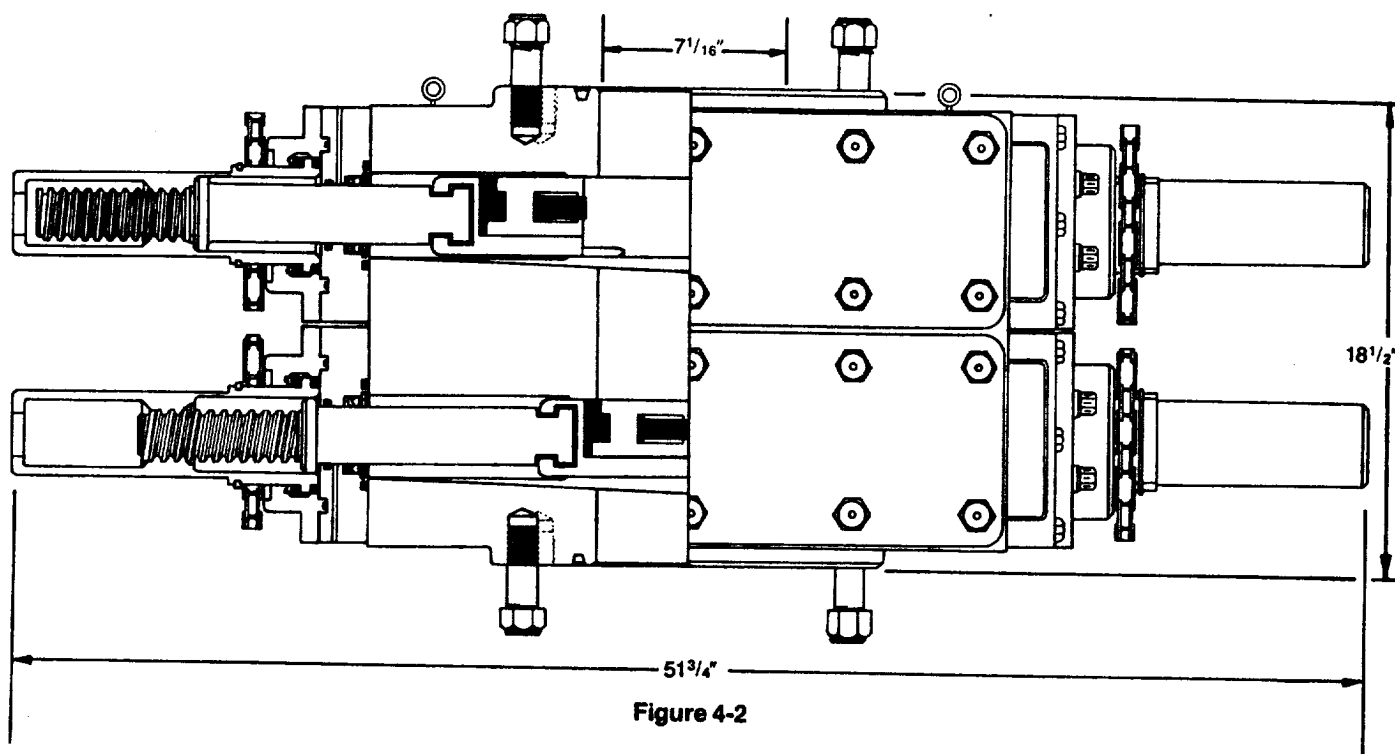
*John W. West*

Certificate No. JOHN W. WEST,

676

RONALD J. EIDSON,

3239



## DIMENSIONS AND WEIGHTS

		Manual
Weight	Single (pounds)	1,272
	Double (pounds)	2,335
Overall height, less studs	Single (inches)	10
	Double (inches)	18 1/2
Overall length (inches)		51 3/4
Overall width, less handwheel (inches)		20 1/4
Opening through preventer (inches)		7 1/16
Working pressure (psi)		3,000
Test pressure (psi)		6,000
Handwheel diameter (inches)		20
Ring joint gasket API number		R-45

SUP Exhibit "E"  
 Marbob Energy Corporation  
 Boyd Dodd Federal Well #8  
 SW1/4SE1/4 Sec. 11-17S-29E

SUPPLEMENTAL DRILLING DATA

MARBOB ENERGY CORPORATION  
WELL #8 BOYD DODD FEDERAL  
SW1/4SE1/4 SEC. 11-17S-29E  
EDDY COUNTY, NEW MEXICO  
(DEVELOPMENT WELL)

1. SURFACE FORMATION: Quaternary.

2. ESTIMATED TOPS OF GEOLOGIC MARKERS:

Salt	360'	Queen	1815'
Base Salt	780'	Grayburg	2140'
Yates	930'	San Andres	2510'
Seven Rivers	1145'	Glorietta	3900'

3. ANTICIPATED POROSITY ZONES:

Water	Above 180'
Oil	2350 - 4500'

4. CASING DESIGN:

SIZE	INTERVAL	WEIGHT	GRADE	JOINT	CONDITION
8 5/8"	0-350'	24.0#	K-55	STC	New
5 1/2"	0-4500'	15.5#	K-55	STC	New

5. SURFACE CONTROL EQUIPMENT: A double ram-type BOP will be used.  
(See diagram attached as Exhibit "E")

6. CIRCULATING MEDIUM:

0 - 350' Fresh water mud with gel or lime as needed  
for viscosity control.

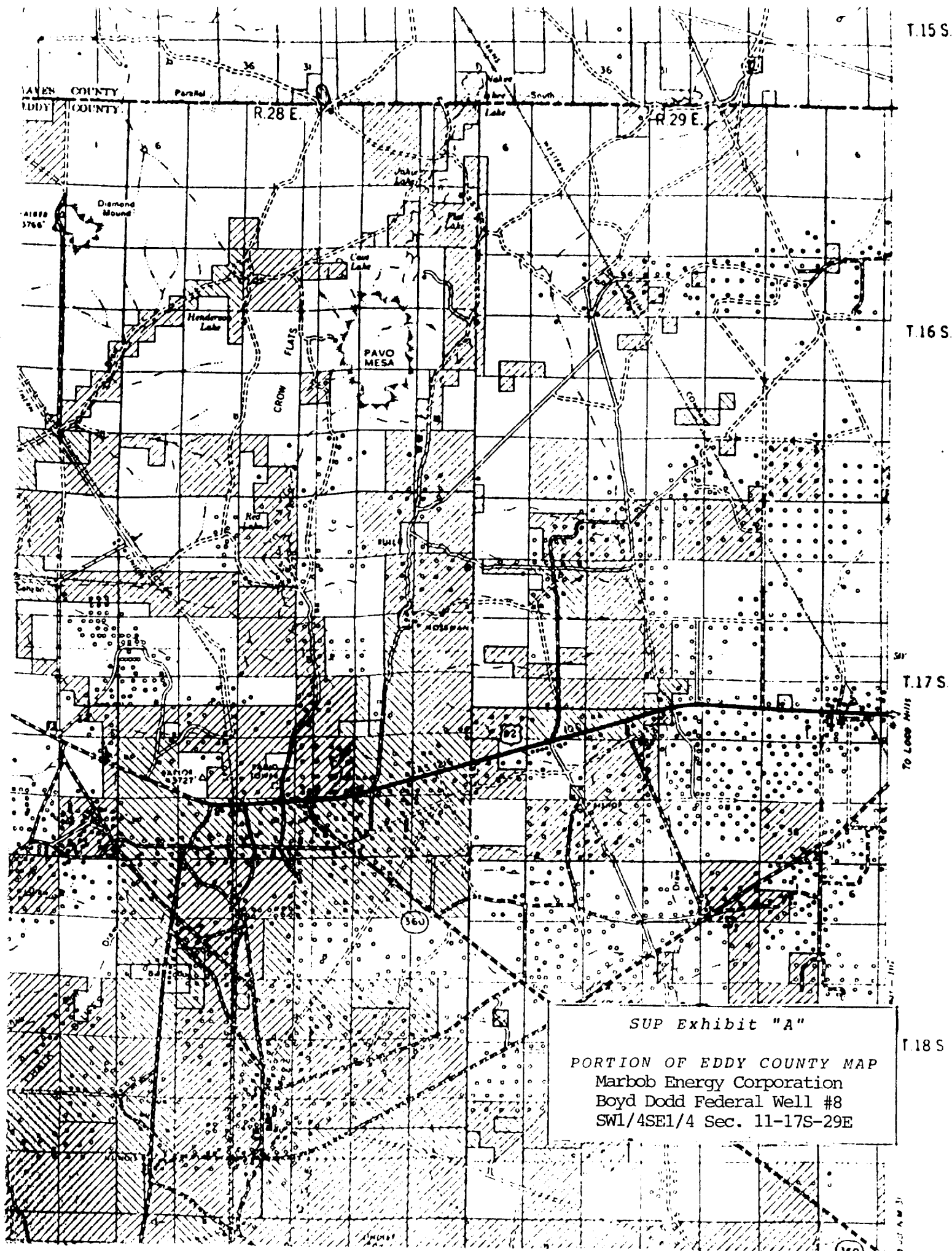
350'-4500' Salt water mud, conditioned as necessary for  
control of viscosity and water loss or gain.

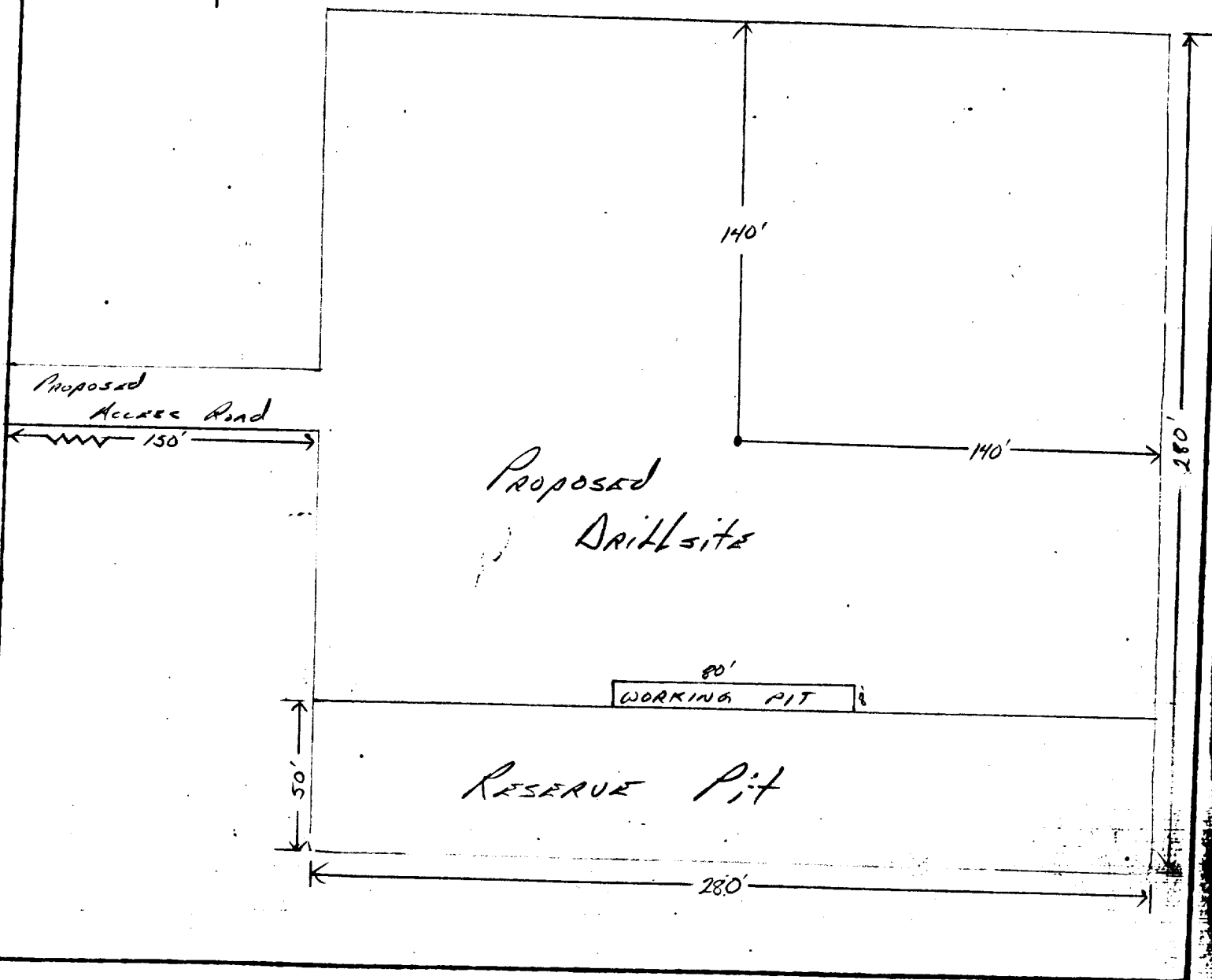
7. AUXILIARY EQUIPMENT: Drill string safety valve.

8. LOGGING PROGRAM: CNL-FDC W/GR Log will be run to TD.

9. ABNORMAL PRESSURES, TEMPERATURES OR GASES: A water flow may  
be encountered in the salt section.

10. ANTICIPATED STARTING DATE: It is planned that operations  
will commence about November 25, 1985. Duration of drilling,  
testing and completion operations should be one to four  
weeks.





LEGEND

1 cm = 20 ft.

SUP Exhibit "D"

SKETCH OF PROPOSED WELL PAD

Marbob Energy Corporation

Boyd Dodd Well #8

SW1/4SE1/4, Sec. 11-17S-29E