

Submit to Appropriate  
District Office  
State Lease - 6 copies  
Fee Lease - 5 copies

State of New Mexico  
Energy, Minerals and Natural Resources Department

Form C-101  
Revised 1-1-89

OIL CONSERVATION DIVISION

P.O. Box 2088  
Santa Fe, New Mexico 87504-2088

DISTRICT I  
P.O. Box 1980, Hobbs, NM 88240

DISTRICT II  
P.O. Drawer DD, Artesia, NM 88210

DISTRICT III  
1000 Rio Brazos Rd., Aztec, NM 87410

OCT 30 '89

API NO. (assigned by OCD on New Wells)
30-015-25653 26224
5. Indicate Type of Lease STATE <input type="checkbox"/> FEE <input checked="" type="checkbox"/>
6. State Oil & Gas Lease No.

APPLICATION FOR PERMIT TO DRILL, DEEPEN, OR PLUG BACK					
1a. Type of Work: ARTESIA, OFFICE					
b. Type of Well: DRILL <input checked="" type="checkbox"/> RE-ENTER <input type="checkbox"/> DEEPEN <input type="checkbox"/> PLUG BACK <input type="checkbox"/>					
OIL WELL <input type="checkbox"/> GAS WELL <input checked="" type="checkbox"/> OTHER <input type="checkbox"/> SINGLE ZONE <input type="checkbox"/> MULTIPLE ZONE <input type="checkbox"/>					
2. Name of Operator Santa Fe Energy Operating Partners, L.P. ✓					
3. Address of Operator 500 W. Illinois, Suite 500, Midland, TX 79701 X					
4. Well Location Unit Letter C : 1980 Feet From The West Line and 660 Feet From The North Line Section 32 Township 23S Range 29E NMPM Eddy County					
10. Proposed Depth 13,900'		11. Formation Morrow		12. Rotary or C.T. Rotary	
13. Elevations (Show whether DF, RT, GR, etc.) 2989.4' GL		14. Kind & Status Plug Bond Blanket-current		15. Drilling Contractor To be determined	
16. Approx. Date Work will start Rotary					
17. PROPOSED CASING AND CEMENT PROGRAM					
SIZE OF HOLE	SIZE OF CASING	WEIGHT PER FOOT	SETTING DEPTH	SACKS OF CEMENT	EST. TOP
17 1/2	13 3/8	48.0	400'	316	Surface
12 1/4	9 5/8	40.0	2700'	695	Surface
8 1/2	7	29.0	10700'	410	7500'
6 1/2	4 1/2	13.5	10200-13900'	315	10200'

Move in & rig up rotary tools. Drill 17 1/2" hole to 400'. Run 13 3/8" casing & cement with 416 cu.ft. Class C Neat containing 2% CaCl<sub>2</sub>. Wait on cement till 500 psi compressive strength is obtained. Nipple up diverter system consisting of 1 bag type preventer. Test casing to 600 psi. Drill 12 1/4" hole to 2700'. Run 9 5/8" casing. Cement with 837 cu.ft. Class C cement containing 4% gel and 0.25% floccle per sack, followed by 330 cu.ft. Class C Neat containing 2% CaCl<sub>2</sub>. Wait on cement till 500 psi compressive strength obtained. Nipple up triple ram BOP with hydrill. Pressure test casing to 1500 psi. Pressure test BOP to 1500 psi. Drill 8 1/2" hole to 10,700'. Log. Run 7" casing. Cement with 525 cu.ft. 50/50 poz mix A containing 2% gel, 6# salt per sack & 0.3% friction reducer. Test BOP stack to 10,000 psi. Test casing to 3000 psi. Drill shoe & 10' of formation. Test formation to 13.0 ppg mud weight equivalent. Drill 6" hole to 13,900'. Log. Either P&A or run 4 1/2" casing & cement with 340 cu.ft. Class H containing 0.6% friction reducer, 0.4% fluid loss additive, 5# KCl per sack.

IN ABOVE SPACE DESCRIBE PROPOSED PROGRAM: IF PROPOSAL IS TO DEEPEN OR PLUG BACK, GIVE DATA ON PRESENT PRODUCTIVE ZONE AND PROPOSED NEW PRODUCTIVE ZONE. GIVE BLOWOUT PREVENTER PROGRAM, IF ANY.

I hereby certify that the information above is true and complete to the best of my knowledge and belief.

SIGNATURE Michael R. Burton TITLE District Drilling Engineer DATE 10-26-89  
TYPE OR PRINT NAME Michael R. Burton TELEPHONE NO. 915/ 687-3551

(This space for State Use)

ORIGINAL SIGNED BY  
MIKE WILLIAMS  
SUPERVISOR, DISTRICT II

APPROVED BY \_\_\_\_\_ TITLE \_\_\_\_\_ DATE \_\_\_\_\_

CONDITIONS OF APPROVAL, IF ANY:

OCT 30 1989

APPROVAL VALID FOR 180 DAYS  
PERMIT EXPIRES 4-30-90  
UNLESS DRILLING UNDERWAY

Submit to Appropriate  
District Office  
State Lease - 4 copies  
Fee Lease - 3 copies

State of New Mexico  
Energy, Minerals and Natural Resources Department

Form C-102  
Revised 1-1-89

OIL CONSERVATION DIVISION  
P.O. Box 2088  
Santa Fe, New Mexico 87504-2088

DISTRICT I  
P.O. Box 1980, Hobbs, NM 88240

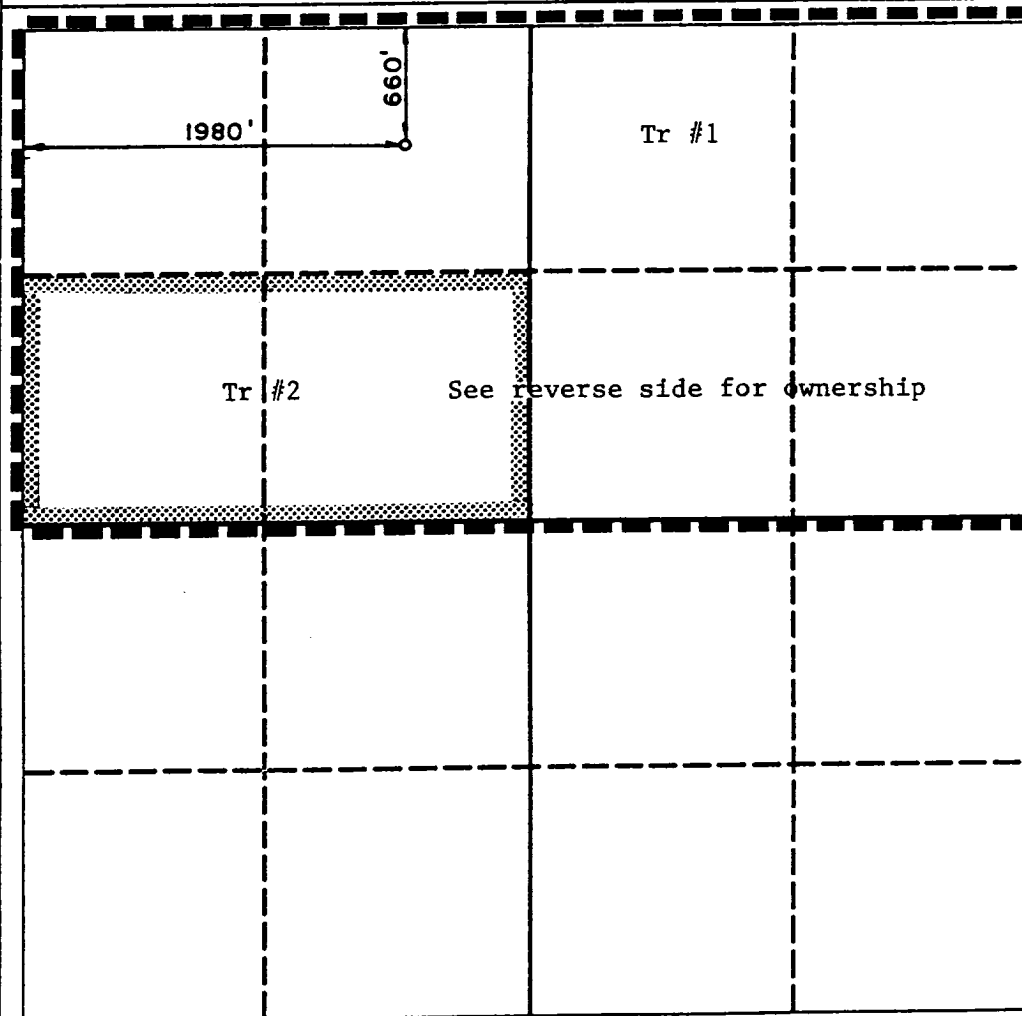
DISTRICT II  
P.O. Drawer DD, Artesia, NM 88210

DISTRICT III  
1000 Rio Brazos Rd., Aztec, NM 87410

WELL LOCATION AND ACREAGE DEDICATION PLAT  
All Distances must be from the outer boundaries of the section

Operator Santa Fe Energy Operating Partners LP			Lease Harroun Trust "32"		Well No. 1
Unit Letter C	Section 32	Township 23 South	Range 29 East	County NMPM	Eddy
Actual Footage Location of Well: 1980 feet from the West line and 600 feet from the North line					
Ground level Elev. 2989.4	Producing Formation Morrow	Pool Und. Cedar Canyon Morrow		Dedicated Acreage: 320 Acres	

- Outline the acreage dedicated to the subject well by colored pencil or hatchure marks on the plat below.
- If more than one lease is dedicated to the well, outline each and identify the ownership thereof (both as to working interest and royalty).
- If more than one lease of different ownership is dedicated to the well, have the interest of all owners been consolidated by communitization, unitization, force-pooling, etc.?  
☒ Yes ☐ No If answer is "yes" type of consolidation Communitization  
If answer is "no" list the owners and tract descriptions which have actually been consolidated. (Use reverse side of this form if necessary).  
No allowable will be assigned to the well until all interests have been consolidated (by communitization, unitization, forced-pooling, or otherwise) or until a non-standard unit, eliminating such interest, has been approved by the Division.



OPERATOR CERTIFICATION

I hereby certify that the information contained herein is true and complete to the best of my knowledge and belief.

Signature

*Michael R. Burton*

Printed Name

Michael R. Burton

Position

District Drilling Engineer  
Company Santa Fe Energy  
Operating Partners, L.P.

Date

10-26-89

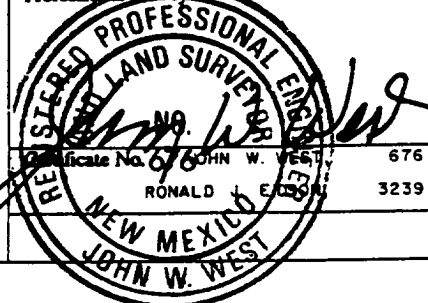
SURVEYOR CERTIFICATION

I hereby certify that the well location shown on this plat was plotted from field notes of actual surveys made by me or under my supervision, and that the same is true and correct to the best of my knowledge and belief.

Date Surveyed

October 18, 1989

Signature & Seal of  
Professional Surveyor



Tr #1 - State of New Mexico Lease V-1286

NE/4, N/2NW/4 Section 32, T-23-S, R-29-E, Eddy County, New Mexico

WI Ownership

Santa Fe Energy Operating Partners, L.P. - 100%

Royalty Ownership

State of New Mexico - 16.667%

Tr #2 - Harroun Fee Lease

S/2NW/4 Section 32, T-23-S, R-29-E, Eddy County, New Mexico

WI Ownership

Texaco Producing Company - 100%

Royalty Ownership

Harroun Trust et al - 18.75%