

UNITED STATES  
DEPARTMENT OF THE INTERIOR  
BUREAU OF LAND MANAGEMENT

APPLICATION FOR PERMIT TO DRILL OR DEEPEN

1a. TYPE OF WORK

DRILL ☒

DEEPEN ☐

b. TYPE OF WELL

OIL  
WELL ☐

GAS  
WELL ☒

OTHER

SINGLE  
ZONE ☒

RECEIVED  
MULTIPLE  
ZONE ☐

2. NAME OF OPERATOR

BTA Oil Producers

JUN 22 1992

3. ADDRESS AND TELEPHONE NO.

104 S. Pecos, Midland, TX 79701

O. C. D.  
915-682-5953 OFFICE

4. LOCATION OF WELL (Report location clearly and in accordance with any State requirements.)

At surface

1830' FSL & 1980' FEL

At proposed prod. zone

14. DISTANCE IN MILES AND DIRECTION FROM NEAREST TOWN OR POST OFFICE\*

34 miles west from Carlsbad

15. DISTANCE FROM PROPOSED\*

1830' lse line

16. NO. OF ACRES IN LEASE

640

17. NO. OF ACRES ASSIGNED

TO THIS WELL  
320

18. DISTANCE FROM PROPOSED LOCATION\*

TO NEAREST WELL, DRILLING COMPLETED,  
OR APPLIED FOR, ON THIS LEASE, FT.

None

19. PROPOSED DEPTH

9600

20. ROTARY OR CABLE TOOLS

Rotary

21. ELEVATIONS (Show whether DF, RT, GR, etc.)

4132' GR 4143' RT 4134' GR

22. APPROX. DATE WORK WILL START\*

Upon Approval

PROPOSED CASING AND CEMENTING PROGRAM

SIZE OF HOLE	GRADE/NO OF CASING	WEIGHT PER FOOT	SETTING DEPTH	QUANTITY OF CEMENT
17-1/2	J55STC 13-3/8	54.5	300	350 sx - Circ to surface
12-1/4	J55STC 9-5/8	36	2100	1000 sx - Circ to surface
8-3/4	N80 LTC 7	23 & 26	8000	1600 sx - Tie into 9-5/8" csg TOC + 1800'
6-1/8	N80FL4S 5" Liner	18	7600-9600	250 sx - cmt entire liner

Exp Int  
1-30-69  
30-015-27037

Post ID-1  
6-26-92  
New Doc + API

IN ABOVE SPACE DESCRIBE PROPOSED PROGRAM: If proposal is to deepen, give data on present productive zone and proposed new productive zone. If proposal is to drill or deepen directionally, give pertinent data on subsurface locations and measured and true vertical depths. Give blowout preventer program, if any.

24.

SIGNED

*Dorothy Haughton*

TITLE Regulatory Administrator

DATE 6-4-92

(This space for Federal or State office use)

PERMIT NO.

APPROVAL DATE

Application approval does not warrant or certify that the applicant holds legal or equitable title to those rights in the subject lease which would entitle the applicant to conduct operations thereon.  
CONDITIONS OF APPROVAL, IF ANY:

APPROVED BY

TITLE

DATE

6-14-92

Submit to Appropriate  
District Office  
State Lease - 4 copies  
Fee Lease - 3 copies

State of New Mexico  
Energy, Minerals and Natural Resources Department

Form C-102  
Revised 1-1-89

**OIL CONSERVATION DIVISION**

P.O. Box 2088  
Santa Fe, New Mexico 87504-2088

**DISTRICT I**  
P.O. Box 1980, Hobbs, NM 88240

**DISTRICT II**  
P.O. Drawer DD, Artesia, NM 88210

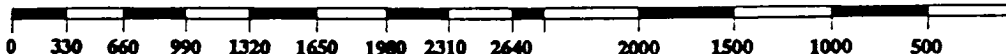
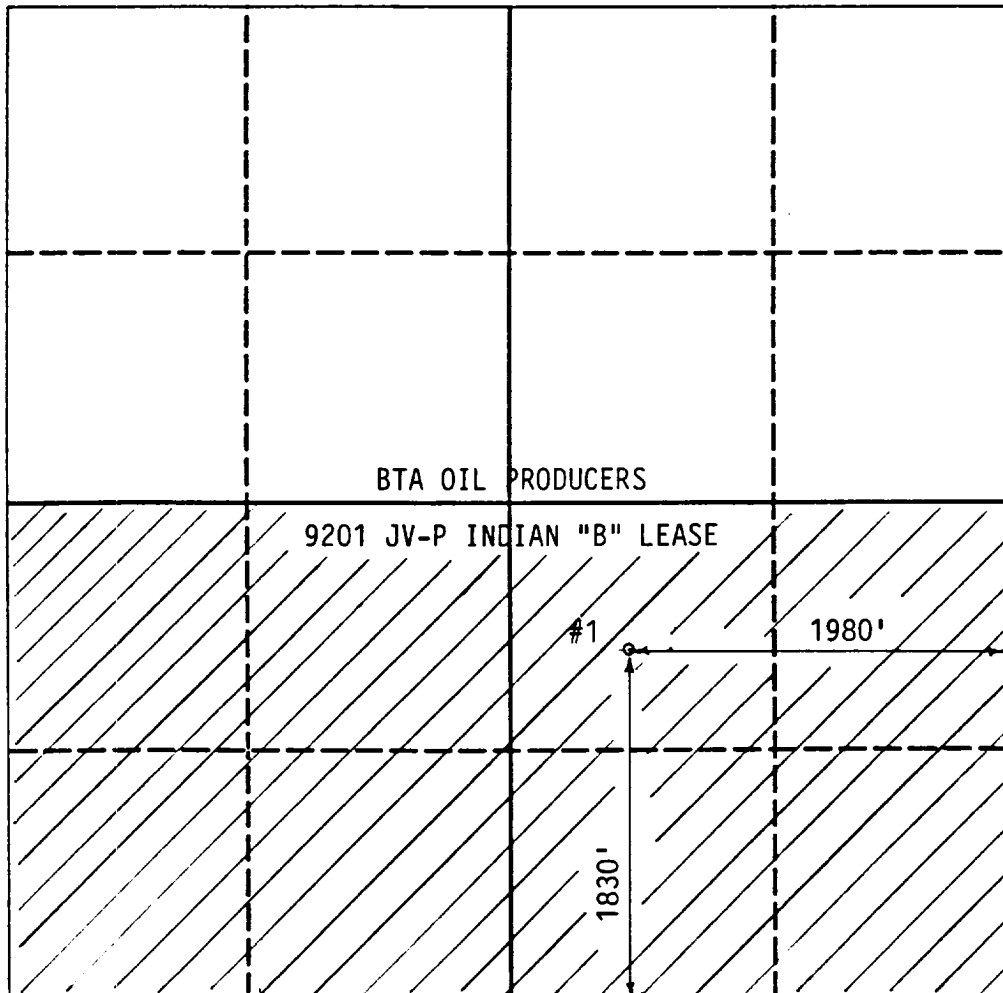
**DISTRICT III**  
1000 Rio Brazos Rd., Aztec, NM 87410

**WELL LOCATION AND ACREAGE DEDICATION PLAT**

All Distances must be from the outer boundaries of the section

Operator <b>BTA OIL PRODUCERS</b>			Lease <b>9201 JV-P INDIAN "B"</b>		Well No. <b>1</b>
Unit Letter <b>"J"</b>	Section <b>5</b>	Township <b>-22-S</b>	Range <b>-23-E</b>	County <b>EDDY</b>	<b>NMPM</b>
Actual Footage Location of Well: <b>1830</b> feet from the <b>SOUTH</b> line and <b>1980</b> feet from the <b>EAST</b> line					
Ground level Elev. <b>4134</b>	Producing Formation <b>WILDCAT</b>		Pool <b>MORROW</b>		Dedicated Acreage: <b>320</b> Acres

1. Outline the acreage dedicated to the subject well by colored pencil or hatchure marks on the plat below.
2. If more than one lease is dedicated to the well, outline each and identify the ownership thereof (both as to working interest and royalty).
3. If more than one lease of different ownership is dedicated to the well, have the interest of all owners been consolidated by communitization, unitization, force-pooling, etc?  
☐ Yes ☐ No If answer is "yes" type of consolidation \_\_\_\_\_  
If answer is "no" list the owners and tract descriptions which have actually been consolidated. (Use reverse side of this form if necessary.)  
No allowable will be assigned to the well until all interests have been consolidated (by communitization, unitization, forced-pooling, or otherwise) or until a non-standard unit, eliminating such interest, has been approved by the Division.



**OPERATOR CERTIFICATION**

I hereby certify that the information contained herein is true and complete to the best of my knowledge and belief.

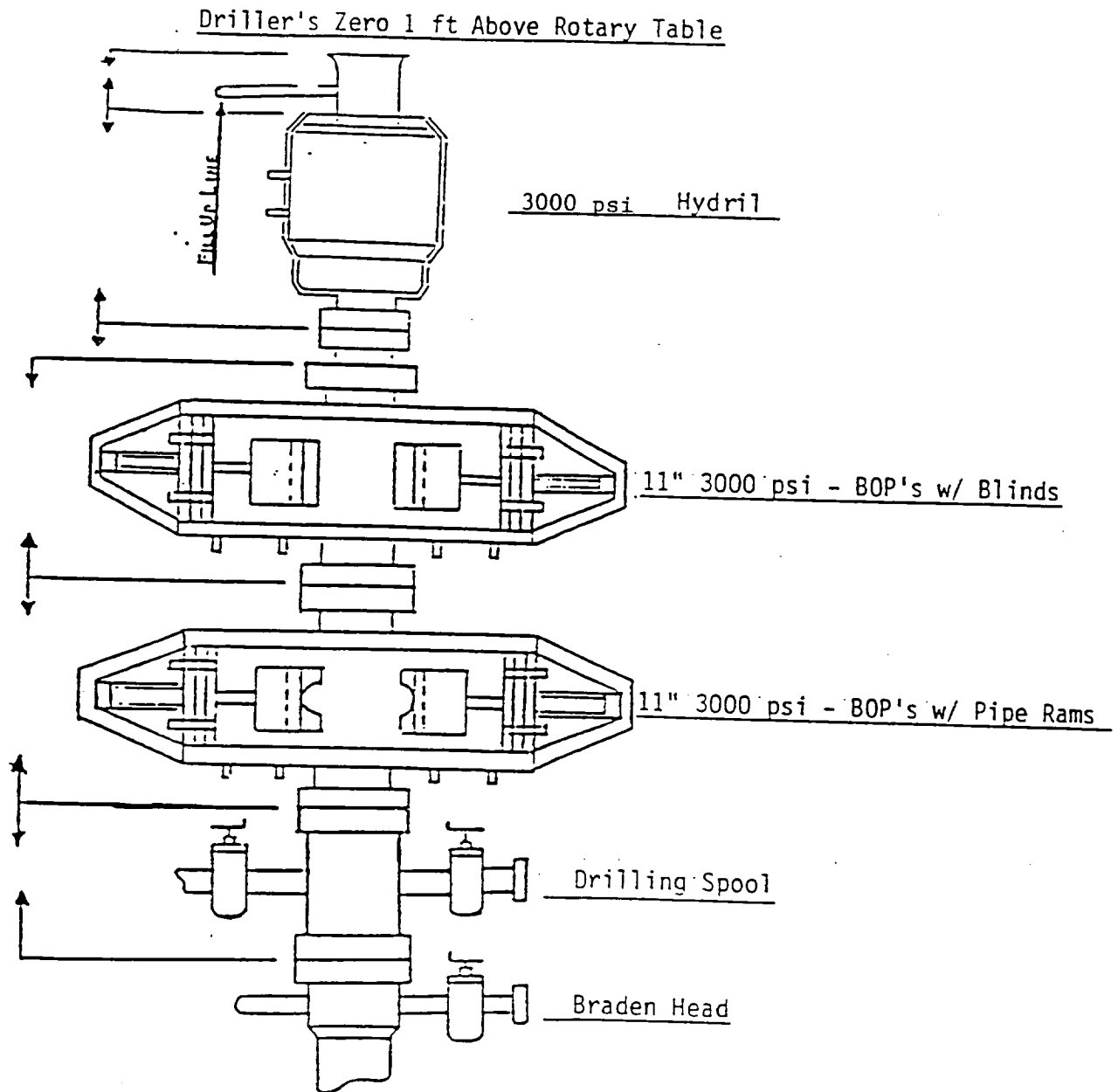
Signature  
*Dorothy Houghton*  
Printed Name  
**Dorothy Houghton**  
Position  
**Regulatory Administrator**  
Company  
**BTA Oil Producers**  
Date  
**6-4-92**

**SURVEYOR CERTIFICATION**

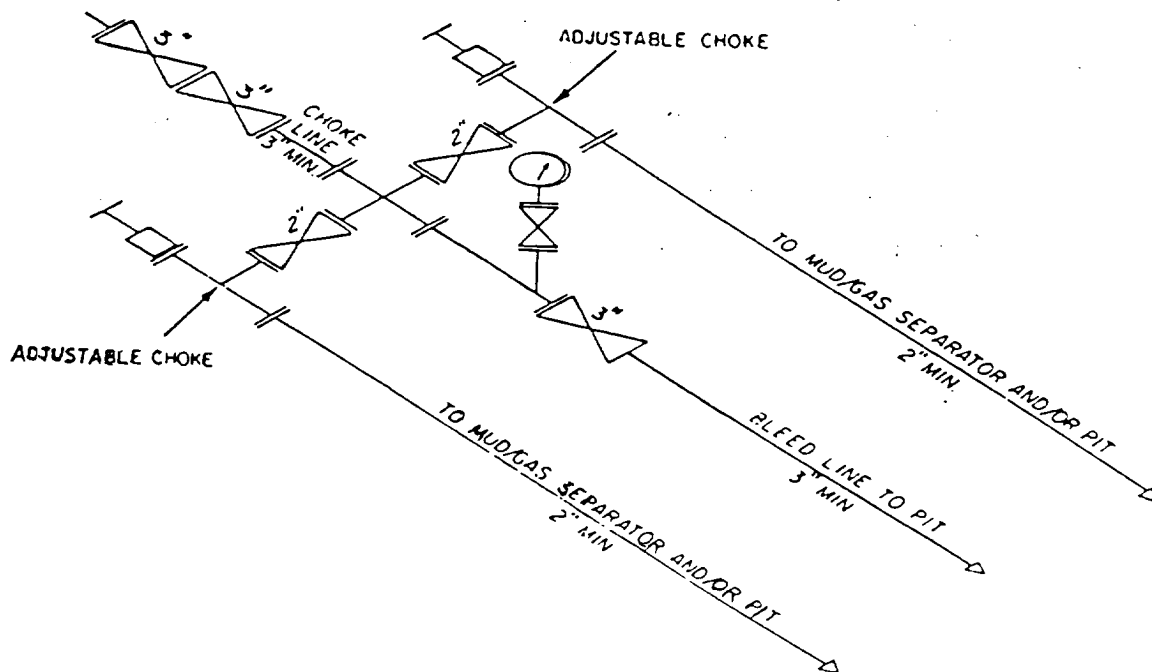
I hereby certify that the well location shown on this plat was plotted from field notes of actual surveys made by me or under my supervision, and that the same is true and correct to the best of my knowledge and belief.

Date Surveyed  
**JUNE 3, 1992**  
Signature & Seal of Professional Surveyor  
*Max A. Schumann, Jr.*  
**MAX A. SCHUMANN, JR.**  
Certificate No.  
**1510**

B T A O I L P R O D U C E R S



BTA Oil Producers  
9201 JV-P Indian "B"  
Well #1  
1830' FSL & 1980' FEL  
Section 5, T-22-S, R-23-E  
Eddy County, New Mexico  
Wildcat



3M CHOKE MANIFOLD EQUIPMENT — CONFIGURATION MAY VARY

BTA Oil Producers  
 9201 JV-P Indian "B"  
 Well #1  
 1830' FSL & 1980' FEL  
 Section 5, T-22-S, R-23-E  
 Eddy County, New Mexico  
 Wildcat

## DRILLING PROGRAM

BTA OIL PRODUCERS  
Indian -B-, 9201 JV-P, Well No. 1  
1830' FSL and 1980' FEL  
Sec. 5, T-22-S, R-23-E  
Eddy County, New Mexico

In conjunction with Form 3160-3, Application for Permit to Drill, BTA Oil Producers submits the following 10 items for pertinent information in accordance with BLM requirements:

1. The geologic surface formation is Quaternary.
2. The estimated top of geologic marker are as follows:

San Andres	430'
Glorietta	1,920'
Wolfcamp	6,180'
Morrow	8,450'

3. The estimated depth at which anticipated water, oil or gas formations are expected to be encountered:

Morrow	8,450'
--------	--------

All shows of fresh water and minerals will be reported and protected. A sample will be taken of any water flows and furnished to the BLM, Division of Minerals. All oil and gas shows will be adequately tested for commercial possibilities reported and protected.

4. Proposed Casing and Cementing program:

<u>Casing Size</u>	<u>Setting From</u>	<u>Depth to</u>	<u>Weight</u>	<u>Grade</u>	<u>Joint</u>
13-3/8"	0	300'	54.5#	J-55	STC
9-5/8"	0	2,100'	36.0#	J-55	STC
7"	0	6,000'	23.0#	N-80	LTC
7"	6,000'	8,000'	26.0#	N-80	LTC
5"	7,600'	9,600'	18.0#	N-80	FL4S

Equivalent ~~or adequate~~ grades and weights of casing may be substituted at the time casing is run, depending upon availability.

13-3/8" casing will be cemented with approximately 350 sacks of Class "C" cement with 2% CaCl to circulate to surface.

9-5/8" casing will be cemented with sufficient light cement, tailed-in with 200 sacks of Class "C" cement, to circulate to surface.

7" casing will be cemented with sufficient light cement, tailed-in with 400 sacks of Class "H" cement, to tie back into the 9-5/8" casing.

5" liner will be cemented with 250 sx Class "H".

Note: All casing strings will be pressure tested to 0.22 psi/ft. of setting depth or 1500 psi (whichever is greater) after cementing and prior to drillout.

5. Pressure Control Equipment:

Blowout prevention equipment will consist of dual 3,000 psi working pressure, ram type preventers. A BOP sketch is attached.

6. Circulating Medium:

Surface to 2,100': Fresh water with lime or gel as needed for viscosity control.

2,100' to TD: Water base drilling fluid conditioned as necessary for control of viscosity, pH, and water-loss. Weighted as necessary for well control.

7. Auxiliary Equipment:

- a. Upper kelly cock valve with handle available
- b. Lower kelly cock valve with handle available
- c. Safety valves and subs to fit all drill strings

8. Testing, Logging and Coring Program:

- a. Drill Stem Tests will be made when samples, drilling time and other data indicate a test is warranted.
- b. It is planned that electric logs will include Gamma Ray-CNL and FDC logs and dual laterologs.
- c. No coring is planned.

9. Abnormal Pressures and Temperatures:

No abnormal pressures or temperatures are anticipated.

10. Anticipated Starting Date:

- a. Work will commence after approval of this application.
- b. Drilling and completion operations will take approximately 60 days.

SURFACE USE PLAN

FOR

BTA OIL PRODUCERS  
INDIAN -B-, 9201 JV-P, Well No. 1  
1830' FSL & 1980' FEL  
SEC. 5, T-22-S, R-23-E  
EDDY COUNTY, NEW MEXICO

LOCATED: 34 miles West from Carlsbad

FEDERAL LEASE NUMBER: NM 068721

SURFACE OWNERSHIP: Federal

GRAZING LEASEE: Wayne Boles  
P. O. Box 40  
Welch, Texas 79377  
(806) 489-7415

POOL: Wildcat (Morrow)

POOL RULES: 320 acre spacing

EXHIBITS:

- A. Topographic Map
- B. Road Map
- C. County Map
- D. Location Access Plat
- E. Drilling Rig Layout

## MULTI-POINT SURFACE USE & OPERATIONS PLAN

BTA Oil Producers

Indian -B-, 9201 JV-P, Well No. 1  
1830' FSL & 1980' FEL  
Sec. 5, T22S, R23E  
Eddy County, New Mexico

This plan is submitted with Form 3160-3, Application for Permit to Drill, covering the referenced well. The plan describes the location of the proposed well, the proposed construction activities and operations plan, the magnitude of necessary surface disturbance, and the procedures to be followed in rehabilitating the surface after completion of the operation so that complete appraisal can be made concerning the environmental effects associated with the operations.

### 1. Existing Roads

- A. Exhibit -A- is a topographic map showing the location of the proposed well as staked with existing roads and conditions within the one mile area. The proposed location is approximately 34 miles west from Carlsbad, New Mexico as shown on Exhibit -B-.
- B. From Carlsbad go northwest on Hwy 285 for 12 miles to State Hwy 137. Turn left and go south for 18 miles to a sign on the right, Queens Road and H-Y Ranch. Go right through the cattle guard and go for two and one-half miles to the west on caliche road. Continue on north 4.5 miles then west on flagged access road to the drillsite as shown on Exhibits -B- and -D-.

### 2. Access Road

- A. Our proposed access road will be 636 feet west from the existing Boles Ranch road.
- B. Caliche will be used for the access road; watered, compacted and graded.
- C. The access road will be crowned for drainage and maintained during drilling operations and, if productive, as long as producing.

### 3. Location of Existing Wells

- A. All existing wells within a one mile radius of our proposed well are shown on Exhibit -C-.

## MULTI-POINT SURFACE USE AND OPERATION PLAN

Indian -B-, 9201 JV-P, Well No. 1

Page 2

### 4. Location of Existing and/or Proposed Facilities if Well is Productive

- A. If well is productive, we will use the existing well pad for all necessary production facilities.
- B. New facilities will be applied for via Sundry notice with schematic diagram prior to installation.
- C. Should the well be successfully completed for production, the BLM will be notified within five days when the well is placed in producing status.
- D. All facilities will be painted a flat, non-reflective, earthtone color to match the standard environmental colors within six months of installation.

### 5. Location and Type of Water Supply

- A. Water for drilling and completion operations will either be purchased and trucked to the well site, or transported by a plastic temporary "fas-line" laid on the surface alongside existing roads.
- B. There may be enough water to be purchased from the Boles Ranch per Wayne Boles.

### 6. Source of Construction Materials

- A. Caliche used for construction of the drilling pad and access road will be obtained from the existing caliche pit located in the SW4/SW4 of Section 28.

### 7. Methods of Handling Waste Disposal

- A. Drill cuttings will be disposed of in the reserve pits located on the north side of the rig.
- B. Drilling fluids will be allowed to evaporate in the reserve pits until the pits are dry enough for backfilling.
- C. Water produced during operations will be collected in tanks until hauled to an approved disposal system or a separate disposal application will be submitted to the BLM for appropriate approval.
- D. Oil produced during test will be stored in test tanks until sold.
- E. Trash, waste paper and garbage will be disposed of by hauling to an available disposal. All waste material will be contained in a totally enclosed trash basket with a fine wire mesh, to prevent wind scattering during collection. The road and pad will be kept litter free.

## MULTI-POINT SURFACE USE AND OPERATION PLAN

Indian -B-, 9201 JV-P, Well No. 1

Page 3

### 8. Ancillary Facilities

- A. It is possible that a mobile home will be used at the well site during drilling operations.

### 9. Wellsite Layout

- A. Exhibit -E- shows the rig layout and reserve pit. The pits will be located to the west to avoid the deep drainage draw on the north.
- B. No cut and fill will be required at the well site, however, it will require clearing and levelling as shown on well pad detail on Exhibit -D-.
- C. The reserve pits will be fenced.

### 10. Plans for Restoration of Surface

- A. Following drilling and/or completion operations, all equipment and material not needed for further operations will be removed. The location will be cleaned of all trash and junk to leave the well site as clean as possible.
- B. Any unguarded pits containing fluids will be fenced until they are filled. Oil in the mud pit will necessitate either removal or installation of overhead flagging. The pit will be allowed to dry prior to the commencement of backfilling operations. Fill material will be pushed back into the cuts and up over the backslope, recontouring the area so that there are no large depressions that will trap water or form ponds. Topsoil will be evenly distributed over the entire location. The seedbed will be prepared by disking to a depth of four to six inches following the contour.
- C. If the proposed well is non-productive, all rehabilitation and/or vegetation requirements of the BLM will be complied with and will be accomplished as expeditiously as possible.
- D. All disturbed areas will be seeded on the contour at a depth of one-half inch using the seed mixture required by the BLM.
- E. Seeding will be completed after September 15 and prior to November 15th before freeze up or as early as possible the following spring to take advantage of available ground moisture.
- F. Newly constructed access road will be recontoured, disked, and seeded as specified above. All rehabilitation work, including seeding, will be completed as specified by the BLM, or sooner if conditions permit.

MULTI-POINT SURFACE : AND OPERATION PLAN

Indian -B-, 9201 JV-P, Well No. 1

Page 4

11. Surface Topography

- A. The surface ownership is Federal and falls in a fairly flat valley used mainly for grazing.
- B. The grazing leasee is Wayne Boles of Boles Ranch. The ranch foreman is Joe Cox.
- C. Signs identifying and locating our well will be maintained at the drillsite and principle entrance, commencing with the spudding of the well.
- D. An Archaeological Survey is being prepared and will be mailed directly to the Carlsbad office.

12. Operator's Representative

- A. The field representatives that is responsible for assuring compliance with the approved surface use plan is:

Drilling Superintendent:

Mr. L. G. Johnson

Phone: 915/682-3753 (Office)

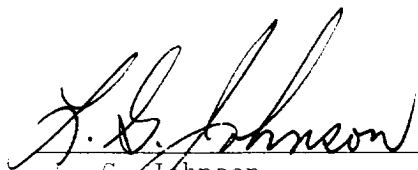
915/682-5149 (Home)

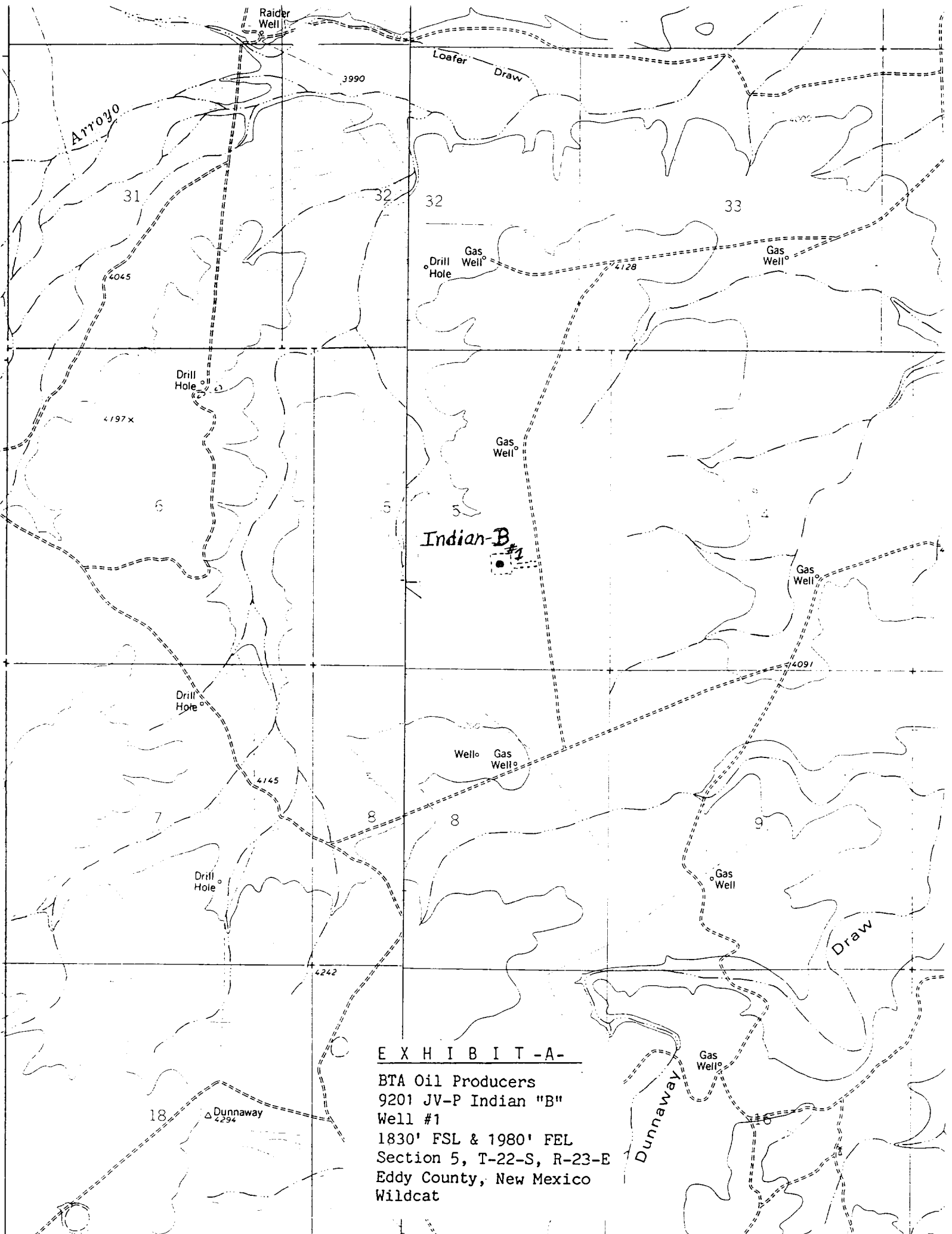
915/683-4090 (Mobile)

13. Certification:

I hereby certify that I, or persons under my direct supervision, have inspected the proposed drill site and access route; that I am familiar with the conditions which presently exist; that the statements made in this plan are, to the best of my knowledge, true and correct; and that the work associated with the operations proposed herein will be performed by BTA Oil Producers and its contractors and sub-contractors in conformity with this plan and the terms and conditions under which it is approved. This statement is subject to the provisions of 18 U.S.C. 1001 for the filing of a false statement.

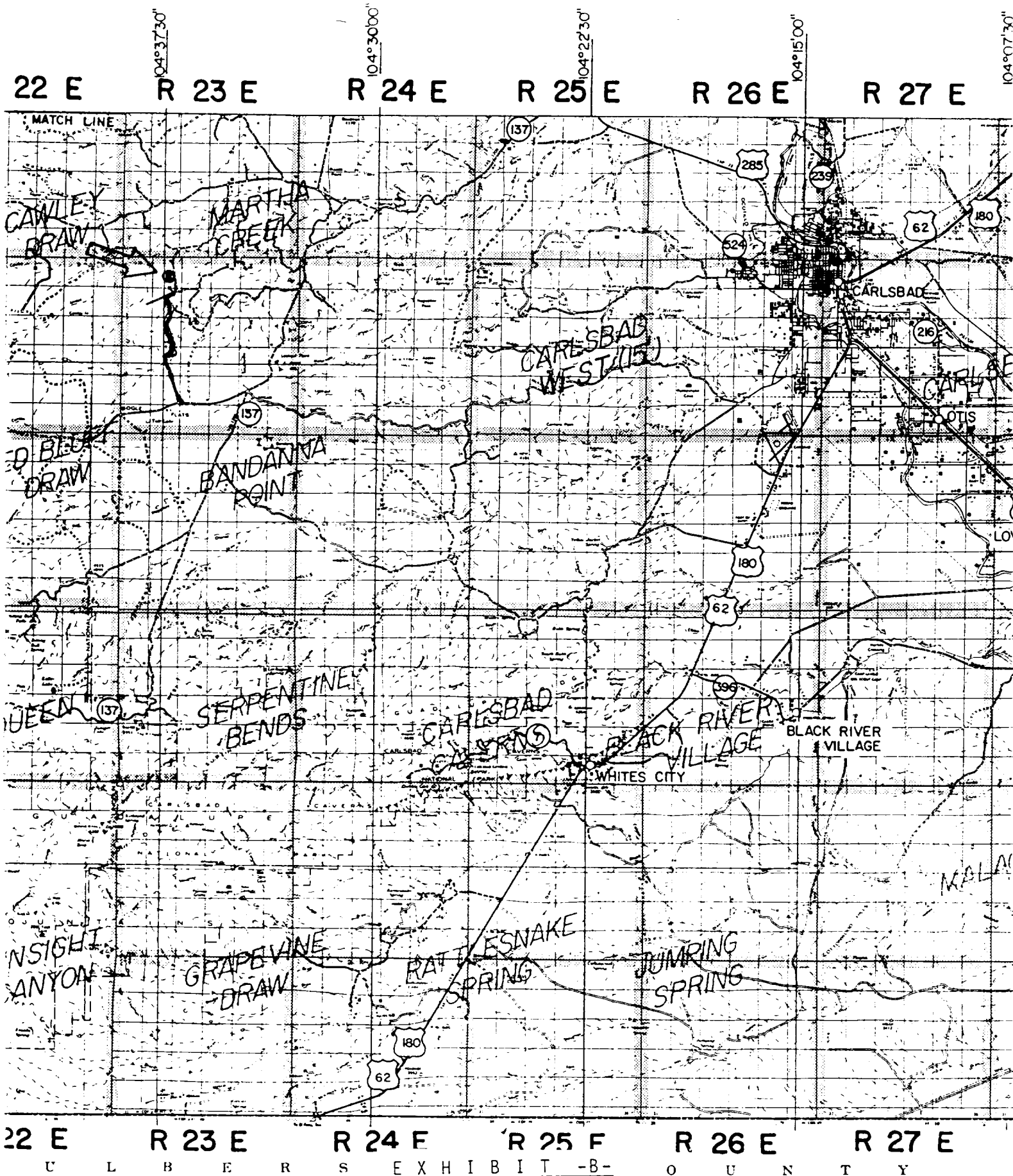
Dated this 4th day of June, 1992.

  
\_\_\_\_\_  
L. G. Johnson  
Drilling Superintendent  
For BTA Oil Producers



E X H I B I T - A -

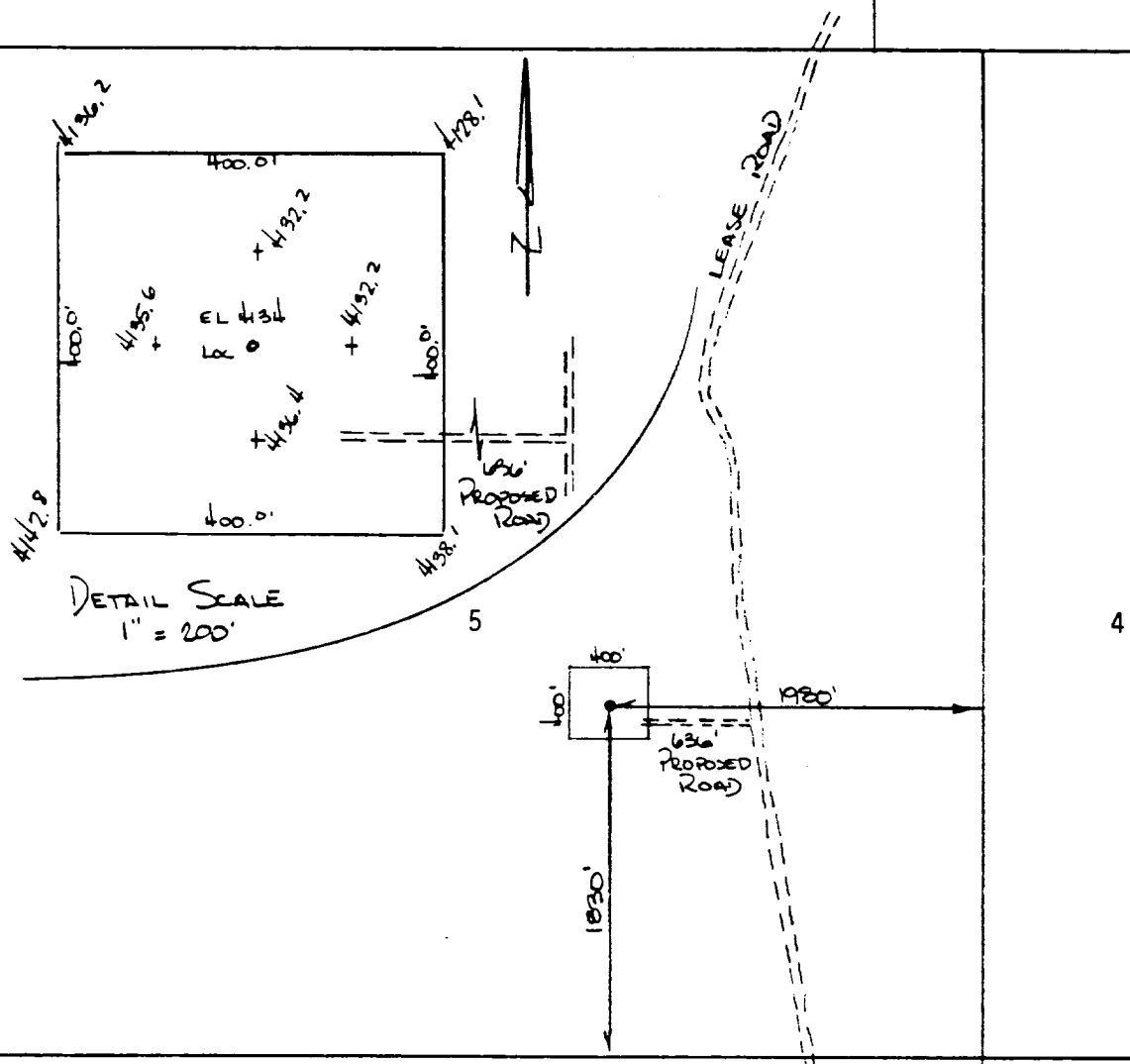
BTA Oil Producers  
9201 JV-P Indian "B"  
Well #1  
1830' FSL & 1980' FEL  
Section 5, T-22-S, R-23-E  
Eddy County, New Mexico  
Wildcat



BTA Oil Producers  
 9201 JV-P Indian "B"  
 Well #1  
 1830' FSL & 1980' FEL  
 Section 5, T-22-S, R-23-E  
 Eddy County, New Mexico  
 Wildcat



33



E X H I B <sup>8</sup> I T -D-  
BTA OIL PRODUCERS

400 FOOT PAD AND ROADWAY SURVEYED FOR  
9201 JV-P INDIAN "B" LEASE, WELL NO. 1  
1830 FEET FROM SOUTH; 1980 FEET FROM EAST LINES

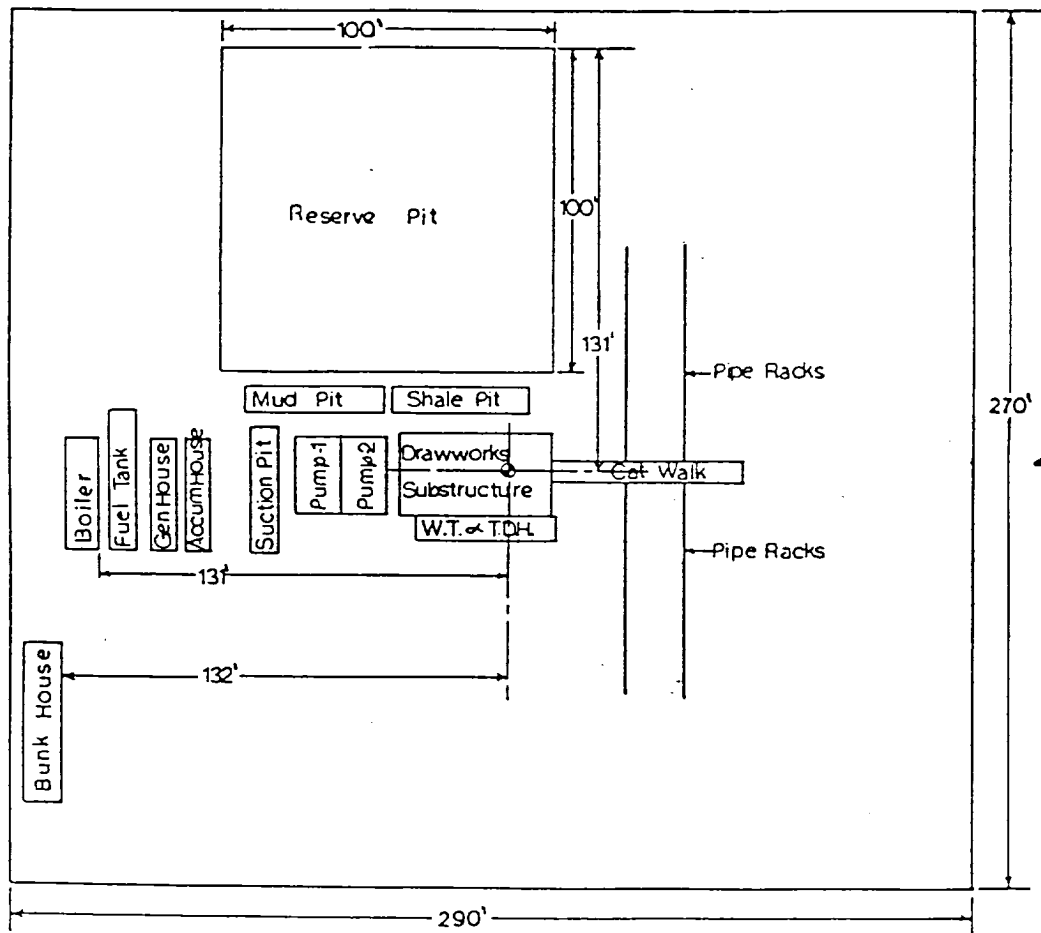
SECTION 5, T-22-S, R-23-E,  
EDDY COUNTY, NEW MEXICO

SCALE: 1" = 1000'

SCHUMANN ENGINEERING CO., INC.  
P. O. BOX 504 - 408 N. PECOS STREET  
MIDLAND, TEXAS 79702-0504  
(915) 684-5548 OFFICE  
(915) 684-6973 FAX

JOB NO. 58,107  
JUNE 3, 1992





E X H I B I T - E -

BTA Oil Producers  
 9201 JV-P Indian "B"  
 Well #1  
 1830' FSL & 1980' FEL  
 Section 5, T-22-S, R-23-E  
 Eddy County, New Mexico  
 Wildcat