

UNITED STATES
DEPARTMENT OF THE INTERIOR
BUREAU OF LAND MANAGEMENT

APPLICATION FOR PERMIT TO DRILL OR DEEPEN

1a. TYPE OF WORK

DRILL



DEEPEEN



b. TYPE OF WELL

OIL



GAS



OTHER

SINGLE

ZONE



MULTIPLE

ZONE



2. NAME OF OPERATOR

RB OPERATING COMPANY

3. ADDRESS AND TELEPHONE NO.

601 N. MARIENFELD, SUITE 102, MIDLAND, TEXAS 79701 (915) 682-0095

4. LOCATION OF WELL (REPORT LOCATION CLEARLY AND IN ACCORDANCE WITH ANY STATE REQUIREMENTS.)*

AT SURFACE

800 FEL, 545 FNL, SEC. 11, T23S, R28E, EDDY CO., NEW MEXICO

AT PROPOSED PROD ZONE

SAME

14. DISTANCE IN MILES AND DIRECTION FROM NEAREST TOWN OR POST OFFICE*

2 MILES NORTHEAST OF LOVING NEW MEXICO

15. DISTANCE FROM PROPOSED *

LOCATION TO NEAREST 545' N. LINE OF E/2

PROPERTY OR LEASE LINE, FT.

(ALSO TO NEAREST DRILG. UNIT LINE, IF ANY)

18. DISTANCE FROM PROPOSED LOCATION*

TO NEAREST WELL, DRILLING, COMPLETED, 1500'

OR APPLIED FOR, ON THIS LEASE, FT.

21. ELEVATIONS (SHOW WHETHER DF, RT, GR, ETC.)

3040' G.L.

16. NO. OF ACRES IN LEASE

320 ACRES

17. NO. OF ACRES ASSIGNED

TO THIS WELL

40 ACRES

20. ROTARY OR CABLE TOOLS

ROTARY

22. APPROX. DATE WORK WILL START*

7-1-95

5. LEASE DESIGNATION AND SERIAL NO.

NM32636

6. IF INDIAN, ALLOTTEE OR TRIBE NAME

N/A

7. UNIT AGREEMENT NAME

N/A

8. FARM OR LEASE NAME, WELL NO.

AMOCO "11" FEDERAL NO. 8

9. API WELL NO.

30-015-27367

10. FIELD AND POOL, OR WILDCAT

EAST LOVING DELAWARE

11. SEC. T.R.M. OR BLK AND SVY OR AREA

SEC. 11, T23S, R28E

12. COUNTY OR PARISH

EDDY

13. STATE

NM

23.

PROPOSED CASING AND CEMENTING PROGRAM

SIZE OF HOLE	GRADE, SIZE OF CASING	WEIGHT PER FOOT	SETTING DEPTH	QUANTITY OF CEMENT
12-1/4"	8-5/8"	24#	570'	350 SACKS
7-7/8"	5-1/2"	15.5 & 17#	6350'	1670 SACKS, DV TOOL @ 3350'

1. DRILL 12-1/4" HOLE TO 570', RUN 8-5/8" CASING AND CEMENT WITH 350 SACKS.
2. TEST CASING TO 1500#, IF SUCCESSFUL DRILL OUT CEMENT AND TEST TO 22 PPG EQUIVALENT.
3. DRILL 7-7/8" HOLE TO T.D.
4. MUD LOG FROM 3600' TO T.D.
5. ELECTRIC LOG AT T.D. TO SURFACE CASING
6. IF COMMERCIAL, SET 5-1/2" CASING TO T.D. CEMENT TO SURFACE WITH 1670 SACKS.
7. COMPLETION PROGRAM WILL BE SUBMITTED UNDER SUNDRY NOTICE.
8. IF NON-COMMERCIAL, PLUG AS PER BLM AND NEW MEXICO OIL & GAS COMMISSION SPECIFICATIONS

REC-115

MAR - 9 1995

OIL CO. IN
DIST. 2

APPLICATION EXPIRED

ANOTHER APPLICATION
SUBMITTED - SAME
OP-LOCATION-STR
API # 30-015-28482

IN ABOVE SPACE DESCRIBE PROPOSED PROGRAM: If proposal is to deepen, give data on present productive zone and proposed new productive zone. If proposal is to drill or deepen directionally, give pertinent data on subsurface locations and measured and true vertical depths. Give blowout preventer program, if any.

24.

SIGNED

TITLE Operations Manager

DATE 03/07/95

(THIS SPACE FOR FEDERAL OR STATE OFFICE USE)

PERMIT NO.

APPROVAL DATE

APPLICATION APPROVAL DOES NOT WARRANT OR CERTIFY THAT THE APPLICANT HOLDS LEGAL OR EQUITABLE TITLE TO THOSE RIGHTS IN THE SUBJECT LEASE WHICH WOULD ENTITLE THE APPLICANT TO CONDUCT OPERATIONS THEREON.
CONDITIONS OF APPROVAL, IF ANY:

APPROVED BY

TITLE

DATE

* SEE INSTRUCTIONS ON REVERSE SIDE

Title 18 U.S.C. Section 1001, makes it a crime for any person knowingly and willfully to make to any department or agency of the United States any false, fictitious or fraudulent statements or representations as to any matter within its jurisdiction.

UNITED STATES
DEPARTMENT OF THE INTERIOR
GEOLOGICAL SURVEY

APPLICATION FOR PERMIT TO DRILL, DEEPEN, OR PLUG BACK

1a. TYPE OF WORK

DRILL ☐DEEPEN ☐PLUG BACK ☐

b. TYPE OF WELL

OIL
WELL ☒GAS
WELL ☐OTHER ☐SINGLE
ZONE ☐MULTIPLE
ZONE ☒

2. NAME OF OPERATOR

RB Operating Company ✓

3. ADDRESS OF OPERATOR

601 N. Marienfeld, Suite 102, Midland, Tx. 79701 D.C.D.

4. LOCATION OF WELL (Report location clearly and in accordance with any State requirements.)

At surface

800 FEL, 545 FNL, Sec. 11, T23S, R28E, Eddy Co., New Mexico

At proposed prod. zone

Same

14. DISTANCE IN MILES AND DIRECTION FROM NEAREST TOWN OR POST OFFICE*

2 miles northeast of Loving, New Mexico

10. DISTANCE FROM PROPOSED*

LOCATION TO NEAREST
PROPERTY OR LEASE LINE, FT. 545' N. Line of E/2

16. NO. OF ACRES IN LEASE

320

17. NO. OF ACRES ASSIGNED

TO THIS WELL
40

18. DISTANCE FROM PROPOSED LOCATION*

TO NEAREST WELL, DRILLING, COMPLETED,
OR APPLIED FOR, ON THIS LEASE, FT.

1500'

19. PROPOSED DEPTH

6500'

20. ROTARY OR CABLE TOOLS

Rotary

21. ELEVATIONS (Show whether DF, RT, GR, etc.)

3040' G.L.

22. APPROX. DATE WORK WILL START*

4/1/93

23.

PROPOSED CASING AND CEMENTING PROGRAM

SIZE OF HOLE	SIZE OF CASING	WEIGHT PER FOOT	SETTING DEPTH	QUANTITY OF CEMENT
12-1/4"	8-5/8"	24#	570'	350 sacks CIRCULATE
7-7/8"	5-1/2"	15.5 & 17#	6350'	1670 sacks, DV tool @ 3350'
				(tie back)

1. Drill 12-1/4" hole to 570', run 8-5/8" casing and cement with 350 sacks.
2. Test casing to 1500#, if successful drill out cement and test to 11 ppg equivalent.
3. Drill 7-7/8" hole to T.D.
4. Mud log from 2600' to T.D.
5. Electric log at T.D. to surface casing.
6. If commercial set 5-1/2" casing to T.D. Cement to surface with 1670 sacks.
7. Completion program will be submitted under Sundry Notice.
8. If non-commercial, plug as per BLM and New Mexico Oil & Gas Commission specifications.

IN ABOVE SPACE DESCRIBE PROPOSED PROGRAM: If proposal is to deepen or plug back, give data on present productive zone and proposed new productive zone. If proposal is to drill or deepen directionally, give pertinent data on subsurface locations and measured and true vertical depths. Give blowout preventer program, if any.

24.

SIGNED

TITLE Operations Manager

DATE 2/2/93

(This space for Federal or State office use)

PERMIT NO.

APPROVAL DATE

APPROVED BY
CONDITIONS OF APPROVAL, IF ANY:

TITLE

DATE

APPROVAL SUBJECT TO
GENERAL REQUIREMENTS AND
SPECIAL STIPULATIONS
ATTACHED

*See Instructions On Reverse Side

30-015-27367

5. LEASE DESIGNATION AND SERIAL NO.	
NM32636	
6. IF INDIAN, ALLOTTEE OR TRIBE NAME	
N/A	
7. UNIT AGREEMENT NAME	
N/A	
8. FARM OR LEASE NAME	
Amoco "11" Federal	
9. WELL NO.	
8	
10. FIELD AND POOL, OR WILDCAT	
East Loving Delaware	
11. SEC., T., R., M., OR BLK. AND SURVEY OR AREA	
411T A Sec. 11, T23S, R28E	
12. COUNTY OR PARISH	13. STATE
Eddy	NM

POST 10-1

3-26-93

NEWLOG AP

RECEIVED
FEB 11 11 02 AM '93
GEOLOGICAL SURVEY

**NEW MEXICO OIL CONSERVATION COMMISSION
WELL LOCATION AND ACREAGE DEDICATION PLAT**

Form C-102
Supersedes C-128
Effective 1-1-65

All distances must be from the outer boundaries of the Section

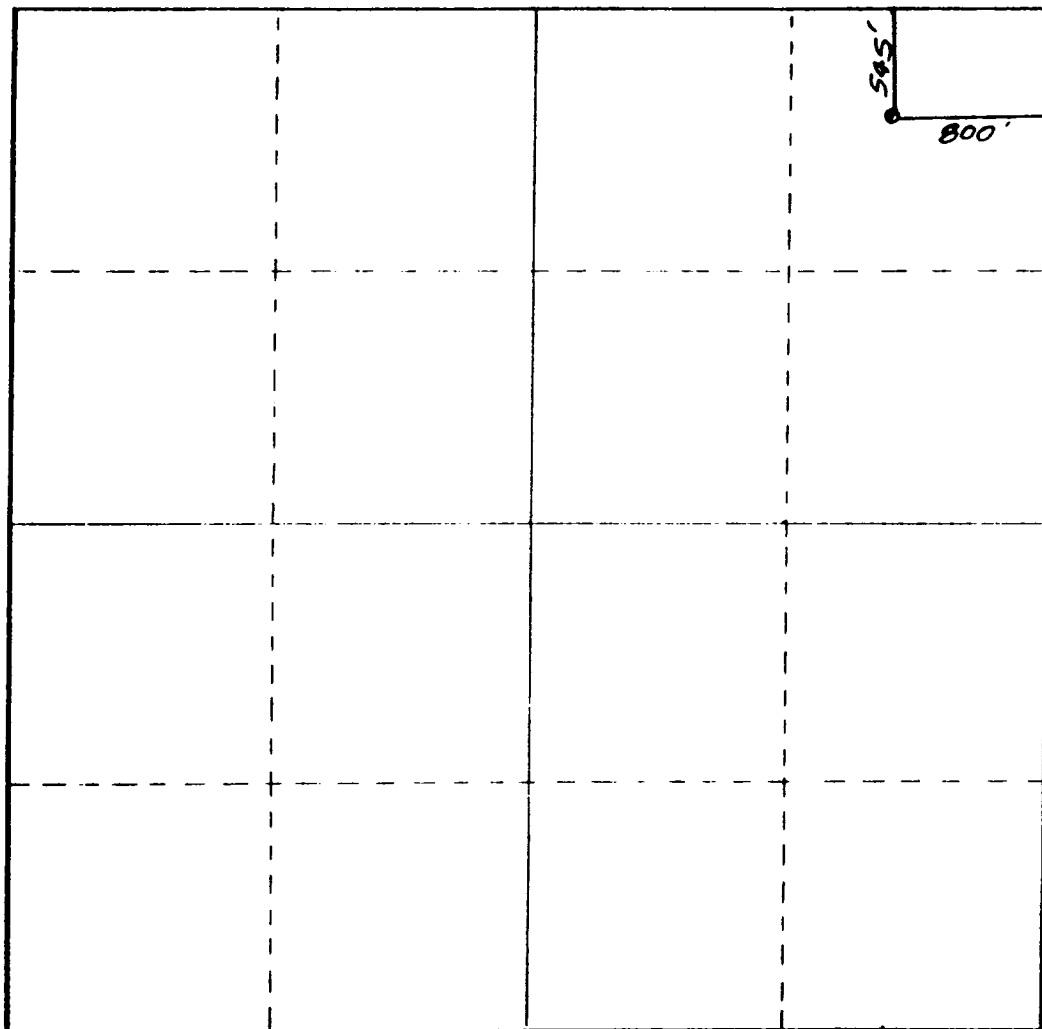
Operator R B OPERATING CO.			Lease NMCO FEDERAL		Well No. 11-8
Unit Letter A	Section 11	Township 23 South	Range 28 East	County Eddy County, N.M.	
Actual Footage Location of Well:					
800 feet from the East line and		545 feet from the North line			
Ground Level Elev. 3040.	Underlying Formation Delaware	Pool E. Loving (Delaware)	Dedicated Acreage: 40 Acres		

1. Outline the acreage dedicated to the subject well by colored pencil or hachure marks on the plat below.
2. If more than one lease is dedicated to the well, outline each and identify the ownership thereof (both as to working interest and royalty).
3. If more than one lease of different ownership is dedicated to the well, have the interests of all owners been consolidated by communitization, unitization, force-pooling, etc?

☐ Yes ☐ No If answer is "yes," type of consolidation _____

If answer is "no," list the owners and tract descriptions which have actually been consolidated. (Use reverse side of this form if necessary.) _____

No allowable will be assigned to the well until all interests have been consolidated (by communitization, unitization, forced-pooling, or otherwise) or until a non-standard unit, eliminating such interests, has been approved by the Commission.



CERTIFICATION

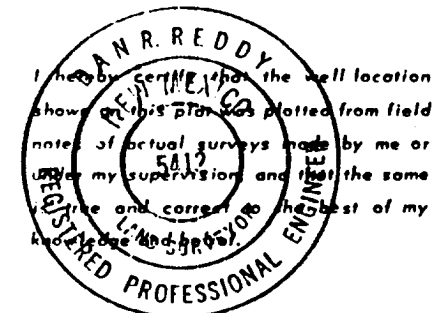
I hereby certify that the information contained herein is true and complete to the best of my knowledge and belief.

Name
Tim Goudeau

Position
Operations Manager

Company
RB Operating Company

Date
2/3/93



Date Surveyed
June 25, 1990

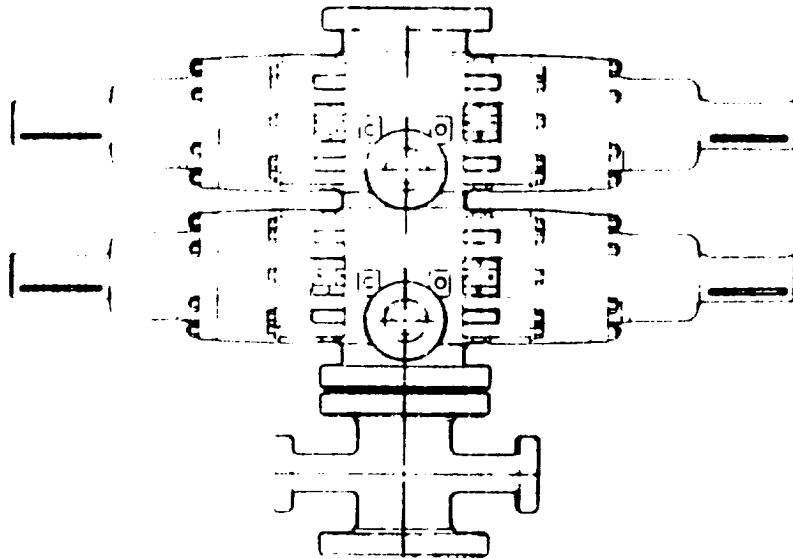
Registered Professional Engineer
and/or Land Surveyor

Dan R. Reddy
Certificate No.

NM PE&PS NO. 5412



BLOW OUT PREVENTION EQUIPMENT



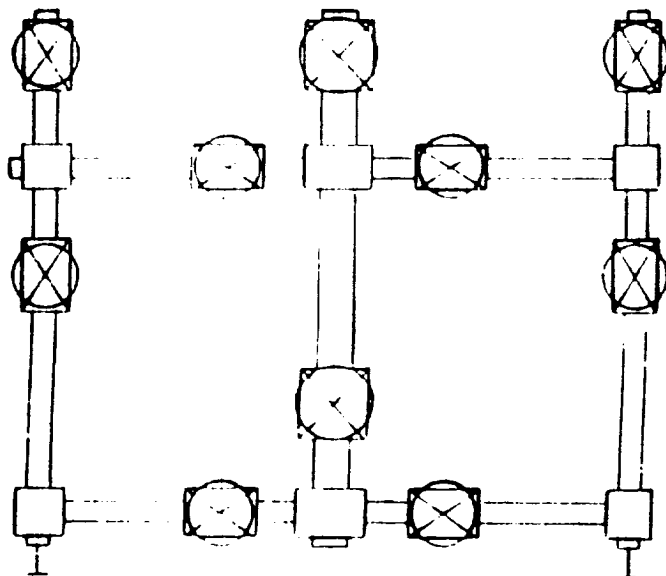
BOP Stack

- 1 Rucker Shaffer "B" double ram
10" - 3000 psi WP

Closing Unit

- Hydril model 80 three station accumulator
- Controls located in accumulator house and on rig floor

CHOKE MANIFOLD



900 Series, 3000 psi WP

PLAT #2