

DISTRICT I
P. O. Box 1980
Hobbs, NM 88240

OIL CONSERVATION DIVISION
P. O. Box 2088
Santa Fe, New Mexico 87504-2088

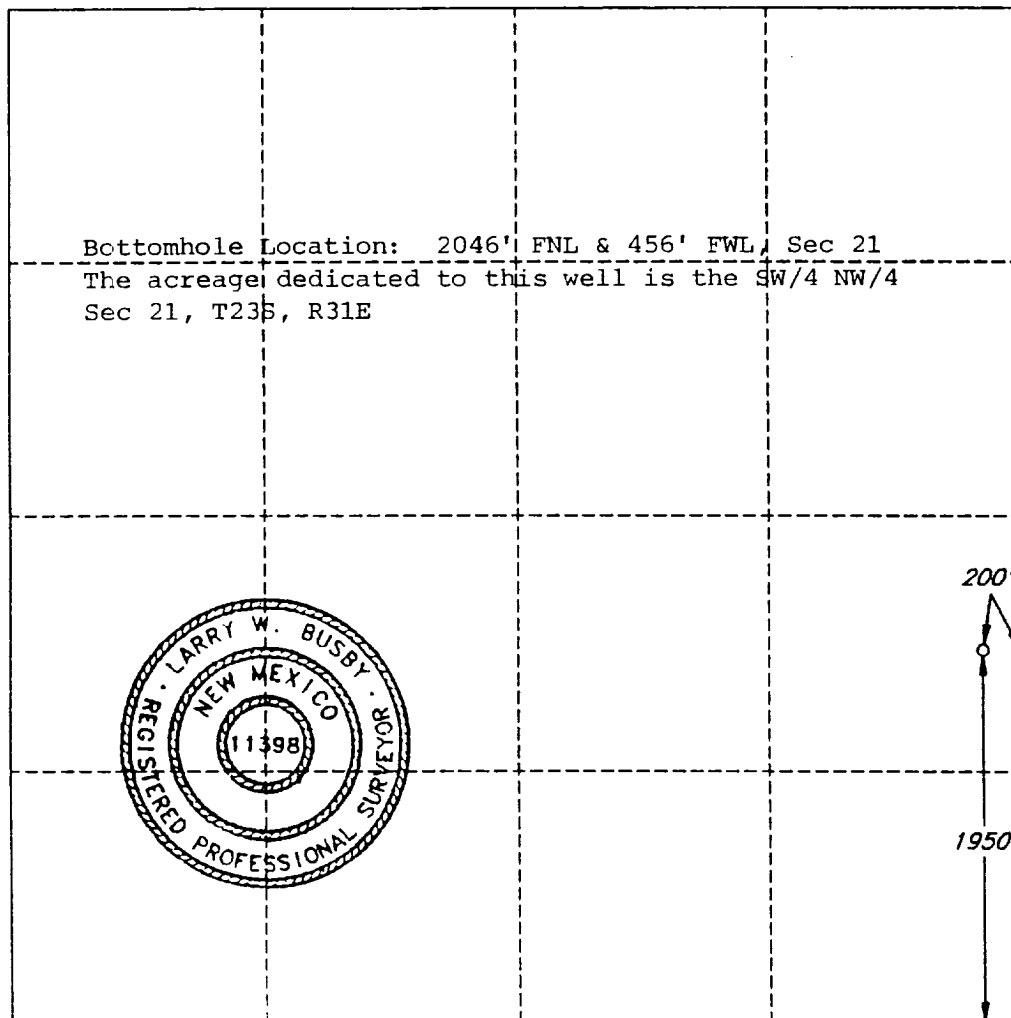
DISTRICT II
P. O. Drawer DD
Artesia, NM 88210

DISTRICT III
1000 Rio Brazos Rd
Aztec, NM 87410

WELL LOCATION AND ACREAGE DEDICATION PLAT
All distances must be from the outer boundaries of the section.

Operator KAISER - FRANCIS OIL COMPANY			Lease PURE GOLD FEDERAL 'A'		Well No. 7
Unit Letter I	Section 20	Township 23 SOUTH	Range 31 EAST, N.M.P.M.	County EDDY	
Actual Footage Location of Well					
1950 feet from the SOUTH line and		200 feet from the EAST line			
Ground Level Elev. 3348'	Producing Formation Delaware		Pool West Sand Dunes	40 Acres	

1. Outline the acreage dedicated to the subject well by colored pencil or hachure marks on the plat below.
2. If more than one lease is dedicated to the well, outline each and identify the ownership thereof (both as to working interest and royalty).
3. If more than one lease of different ownership is dedicated to the well, have the interest of all the owners been consolidated by communitization, unitization, forced-pooling, etc.?
☐ Yes ☐ No If answer is "yes", type of consolidation _____
If the answer is "no", list the owners and tract descriptions which have actually been consolidated. (Use the reverse side of this form if necessary.) _____
No allowable will be assigned to the well until all interests have been consolidated (by communitization, unitization, forced-pooling, or otherwise) or until a non-standard unit, eliminating such interest, has been approved by the division.



OPERATOR CERTIFICATION

I hereby certify that the information herein is true and complete to the best of my knowledge and belief.

Signature
Milton Griffin
Printed Name
Milton Griffin
Position
Operations Engineer
Company
Kaiser-Francis Oil Co.
Date
October 29, 1993

SURVEYOR CERTIFICATION

I hereby certify that the well location shown on this plat was plotted from field notes of actual surveys made by me or under my supervision, and that the same is true and correct to the best of my knowledge and belief.

Date Surveyed
SEPTEMBER 2, 1993
Signature and Seal of Professional Surveyor
Larry W. Busby
Certificate No.
LARRY W. BUSBY R.P.S. #11398
JOB #97700 / 48 SE V.H.B.