

Submit to Appropriate  
District Office  
State Lease - 4 copies  
Fee Lease - 3 copies

State of New Mexico  
Energy, Minerals and Natural Resources Department

Exhibit #2  
Apache "25" Federal No. 3  
Eddy County, New Mexico  
Form E-102  
Revised 1-1-89

OIL CONSERVATION DIVISION

P.O. Box 2088  
Santa Fe, New Mexico 87504-2088

DISTRICT I  
P.O. Box 1980, Hobbs, NM 88240

DISTRICT II  
P.O. Drawer DD, Artesia, NM 88210

DISTRICT III  
1000 Rio Brazos Rd., Aztec, NM 87410

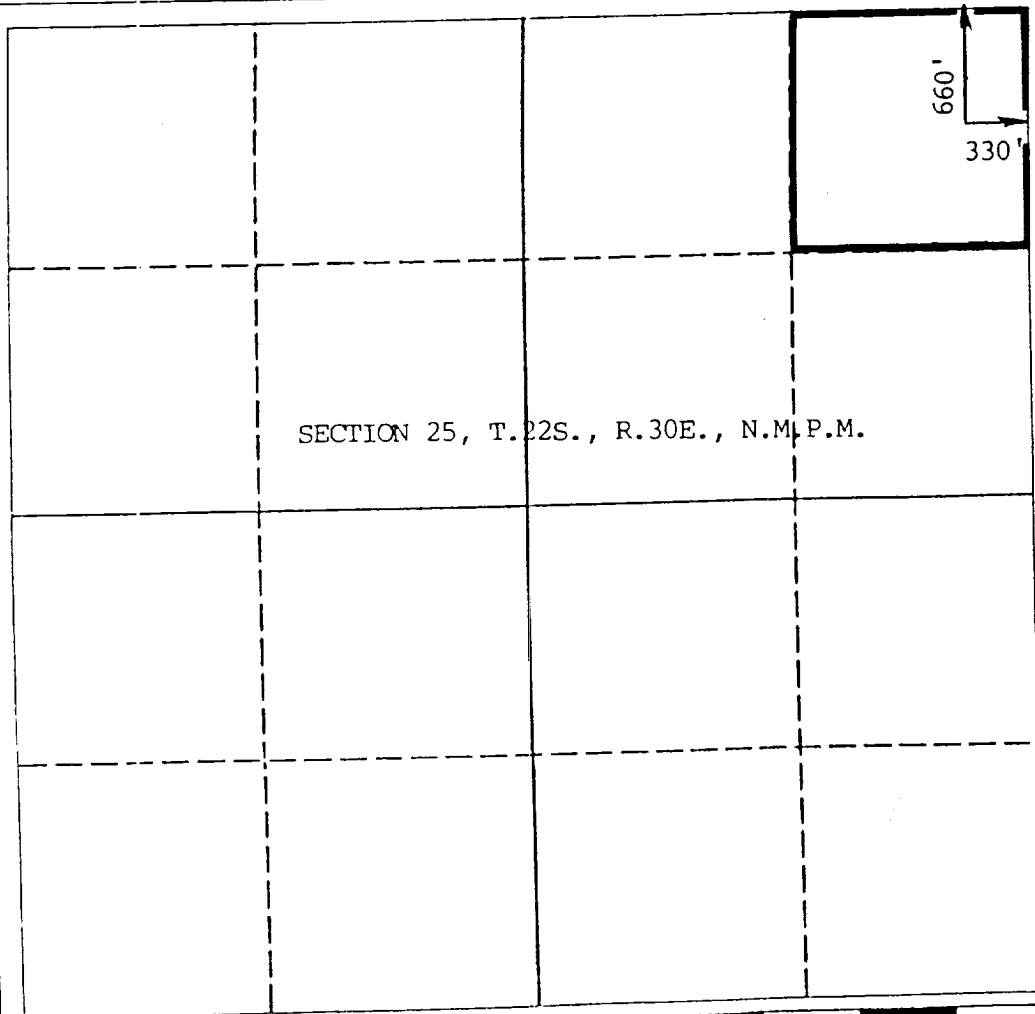
CORRECTED

WELL LOCATION AND ACREAGE DEDICATION PLAT

All Distances must be from the outer boundaries of the section

Operator MITCHELL ENERGY			Lease APACHE 25 FEDERAL		Well No. #3
Unit Letter A	Section 25	Township 22S.	Range 30E.	County N.M.P.M.	EDDY
Actual Footage Location of Well: 660 feet from the NORTH line and 330 feet from the EAST line					
Ground level Elev. 3376	Producing Formation DELAWARE		Pool QUAHADA RIDGE SE.		Dedicated Acreage 40 Acres

1. Outline the acreage dedicated to the subject well by colored pencil or hatchure marks on the plat below.
2. If more than one lease is dedicated to the well, outline each and identify the ownership thereof (both as to working interest and royalty).
3. If more than one lease of different ownership is dedicated to the well, have the interest of all owners been consolidated by communitization, unitization, force-pooling, etc.?  
☐ Yes ☐ No If answer is "yes" type of consolidation \_\_\_\_\_  
If answer is "no" list the owners and tract descriptions which have actually been consolidated. (Use reverse side of this form if necessary.) \_\_\_\_\_  
No allowable will be assigned to the well until all interests have been consolidated (by communitization, unitization, forced-pooling, or otherwise) or until a non-standard unit, eliminating such interest, has been approved by the Division.



OPERATOR CERTIFICATION

I hereby certify that the information contained herein is true and complete to the best of my knowledge and belief.

Signature  
*George Mullen*  
Printed Name  
George Mullen  
Position  
Regulatory Affairs Specialist  
Company  
Mitchell Energy Corporation  
Date  
October 4, 1993

SURVEYOR CERTIFICATION

I hereby certify that the well location shown on this plat was plotted from field notes of actual surveys made by me or under my supervision, and that the same is true and correct to the best of my knowledge and belief.

Date Surveyed  
8/10/93  
Signature & Seal of Professional Surveyor  
*Ed Jaquess*  
Certificate No.  
6290  
16APACHE