

NM OIL CONS. COMMISSION
DRAWER DD
ARTESIA, NM 88210
UNITED STATES
DEPARTMENT OF THE INTERIOR
BUREAU OF LAND MANAGEMENT

SUBMIT IN TRIPL. SET
(Other instructions on
reverse side)

Form approved.
Budget Bureau No. 1004-0136
Expires: December 31, 1991

c/sf

APPLICATION FOR PERMIT TO DRILL OR DEEPEN

1a. TYPE OF WORK

DRILL ☒

DEEPEN ☐

RECEIVED

b. TYPE OF WELL

OIL
WELL ☒

GAS
WELL ☐

OTHER

SINGLE
ZONE ☒

MULTIPLE
ZONE ☐

2. NAME OF OPERATOR

BASS ENTERPRISES PRODUCTION COMPANY

1821

JUN - 8 '94

3. ADDRESS AND TELEPHONE NO.

P. O. BOX 2760, MIDLAND, TEXAS 79702 (915) 683-2277 ARTESIA, OFFICE

O. C. D.

4. LOCATION OF WELL (Report location clearly and in accordance with any State requirements.)*

At surface

990' FNL & 2130' FWL, SECTION 25, T24S, R30E

At proposed prod. zone

Same

14. DISTANCE IN MILES AND DIRECTION FROM NEAREST TOWN OR POST OFFICE*

14 miles east from Malaga, New Mexico

15. DISTANCE FROM PROPOSED*

LOCATION TO NEAREST
PROPERTY OR LEASE LINE, FT.
(Also to nearest drlg. unit line, if any)

990

16. NO. OF ACRES IN LEASE

2495.41

17. NO. OF ACRES ASSIGNED
TO THIS WELL

40

18. DISTANCE FROM PROPOSED LOCATION*

TO NEAREST WELL, DRILLING, COMPLETED,
OR APPLIED FOR, ON THIS LEASE, FT.

1001

19. PROPOSED DEPTH

8300'

20. ROTARY OR CABLE TOOLS

Rotary

21. ELEVATIONS (Show whether DF, RT, GR, etc.)

3444' GR

22. APPROX. DATE WORK WILL START*

Upon Approval

23.

PROPOSED CASING AND CEMENTING PROGRAM

Controlled Water Basin

SIZE OF HOLE	GRADE SIZE OF CASING	WEIGHT PER FOOT	SETTING DEPTH	QUANTITY OF CEMENT
* 14-3/4"	WC-40 11-3/4"	42#	770'	445 sx circ to surface
** 11"	WC-50 8-5/8"	32#	3800'	725 sx circ to surface
*** 7-7/8"	K-55 5-1/2"	15.5#	8300'	640 sx (tie back to int csg @ 3600')

*SURFACE CASING TO BE SET +/- 100' ABOVE SALTS IN THE RUSTLER ANHYDRITE.

**INTERMEDIATE CASING TO BE SET +/- 100' BELOW SALTS.

***D.V. TOOL TO BE SET @ +/- 6000'. CEMENT TO TIE BACK TO 3600'.

DRILLING PROCEDURE, BOP DIAGRAM, ANTICIPATED TOPS AND SURFACE USE PLANS ATTACHED.

THIS LOCATION WAS MOVED FROM 660' FNL & 1980' FWL OF SAME SECTION, TOWNSHIP AND RANGE. WELL SITE WAS MOVED DUE TO EXTENSIVE ARCHEOLOGICAL FINDINGS. ALTERNATE WELL SITE WAS APPROVED BY BARRY HUNT DURING THE ORIGINAL ONSITE INSPECTION 3/21/94.

NOTE: THIS WELL IS OUTSIDE THE R-111 POTASH AREA.

Approval Subject to
General Requirements and
Special Stipulations
Attached

Post ID-1
6-10-94
New Loc.
+ API

Certified P 237 023 604 -BJH/jwd 5/13/94

IN ABOVE SPACE DESCRIBE PROPOSED PROGRAM: If proposal is to deepen, give data on present productive zone and proposed new productive zone. If proposal is to drill or deepen directionally, give pertinent data on subsurface locations and measured and true vertical depths. Give blowout preventer program, if any.

24.

SIGNED

William R. Dannels

TITLE Division Drilling Supt.

DATE

5-13-94

(This space for Federal or State office use)

PERMIT NO.

APPROVAL DATE

Application approval does not warrant or certify that the applicant holds legal or equitable title to those rights in the subject lease which would entitle the applicant to conduct operations thereon.
CONDITIONS OF APPROVAL, IF ANY:

APPROVED BY

15/ Tony J. Herrell (for) AREA MANAGER

DATE

6-6-94

*See Instructions On Reverse Side

Title 18 U.S.C. Section 1001, makes it a crime for any person knowingly and willfully to make to any department or agency of the United States any false, fictitious or fraudulent statements or representations as to any matter within its jurisdiction.

DISTRICT I
P.O. Box 1980, Hobbs, NM 88240

State of New Mexico
Energy, Minerals and Natural Resources Department

Form C-102
Revised February 10, 1994
Instruction on back
Submit to Appropriate District Office
State Lease - 4 Copies
Fee Lease - 3 Copies

DISTRICT II
P.O. Drawer DD, Artesia, NM 88210

DISTRICT III
1000 Rio Brazos Rd., Aztec, NM 87410

OIL CONSERVATION DIVISION

P.O. Box 2088
Santa Fe, New Mexico 87504-2088

☐ AMENDED REPORT

WELL LOCATION AND ACREAGE DEDICATION PLAT

API Number 30-015-27983	Pool Code 96047	Pool Name DELAWARE POKER LAKE, SW
Property Code	Property Name POKER LAKE UNIT	Well Number 102
OGRID No. 001801	Operator Name BASS ENTERPRISES PRODUCTION COMPANY	Elevation 3444'

Surface Location

UL or lot No.	Section	Township	Range	Lot Idn	Feet from the	North/South line	Feet from the	East/West line	County
C	25	24 S	30 E		990'	NORTH	2130'	WEST	EDDY

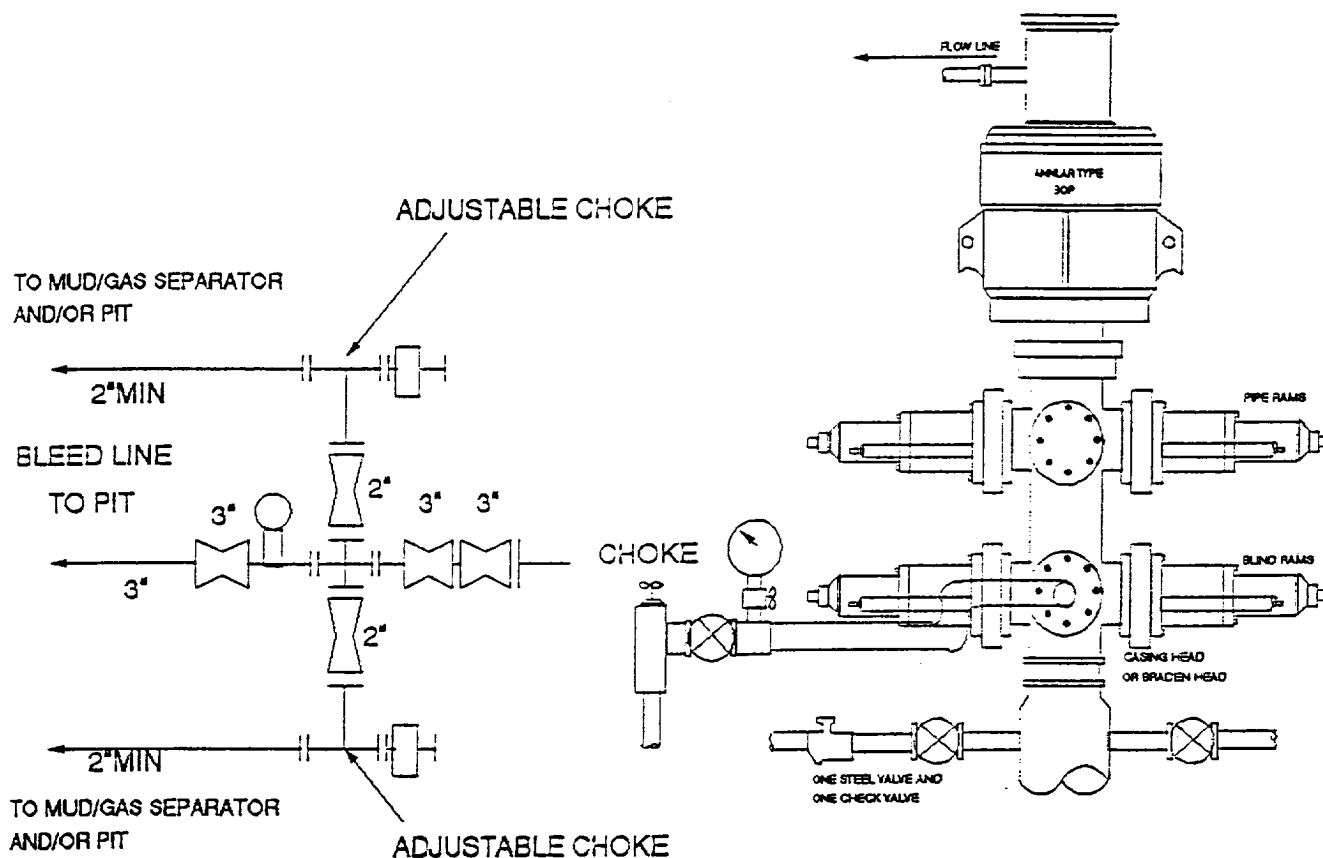
Bottom Hole Location If Different From Surface

UL or lot No.	Section	Township	Range	Lot Idn	Feet from the	North/South line	Feet from the	East/West line	County
Dedicated Acres 40	Joint or Infill N	Consolidation Code U	Order No.						

NO ALLOWABLE WILL BE ASSIGNED TO THIS COMPLETION UNTIL ALL INTERESTS HAVE BEEN CONSOLIDATED
OR A NON-STANDARD UNIT HAS BEEN APPROVED BY THE DIVISION

				OPERATOR CERTIFICATION I hereby certify the the information contained herein is true and complete to the best of my knowledge and belief. <u>William R. Dannels</u> Signature <u>William R. Dannels</u> Printed Name <u>Division Drilling Supt.</u> Title <u>5-13-94</u> Date
				SURVEYOR CERTIFICATION I hereby certify that the well location shown on this plat was plotted from field notes of actual surveys made by me or under my supervision and that the same is true and correct to the best of my belief. Date Surveyed Signature and Seal of Professional Surveyor <u>Gary L. Jones</u> W.O. Num. 94-11-0811 Certificate No. JOHN W. WEST, 676 RONALD J. EIDSON, 3239 GARY L. JONES, 7977

3000 PSI WP



THE FOLLOWING CONSTITUTE MINIMUM BLOWOUT PREVENTER REQUIREMENTS

- A. One double gate blowout preventer with lower rams for pipe and upper rams blind, all hydraulically controlled.
- B. Opening on preventers between rams to be flanged, studded or clamped and at least two inches in diameter.
- C. All connections from operating manifold to preventers to be all steel hose or tube a minimum of one inch in diameter.
- D. The available closing pressure shall be at least 15% in excess of that required with sufficient volume to operate (close, open, and re-close) the preventers.
- E. All connections to and from preventers to have a pressure rating equivalent to that of the BOP's.
- F. Manual controls to be installed before drilling cement plug.
- G. Valve to control flow through drill pipe to be located on rig floor.
- H. Choke may be either positive or adjustable. Choke spool may be used between rams.

DIAGRAM 1