

(December 1990)

UNITED STATES
DEPARTMENT OF THE INTERIOR
BUREAU OF LAND MANAGEMENT

OIL CONSERVATION
811 S. 1ST ST.
ARTESIA, NM 88210

FORM APPROVED
Budget Bureau No. 1004-1036
Expires: December 31, 1991

APPLICATION FOR PERMIT TO DRILL OR DEEPEN

1a. Type of Work

DRILL ☒ DEEPEN ☐

b. Type of Well

☒ Oil Well ☐ Gas Well ☐ Other ☐ Single Zone ☐ Multiple Zone ☐

2. Name of Operator

Merit Energy Company 14591

3. Address and Telephone No.

3525 Andrews Highway Suite #113 Midland Tx 79703 (915)520-4345

4. Location of Well (Report location clearly and in accordance with any State requirements. *)

At Surface: Unit letter L
330' FWL and 2130' FSL - Eddy County, NM

At proposed prod. zone:

Same as above

14. Distance in miles and direction from nearest Town or Post Office *

4 miles west of Carlsbad, NM

15. Distance from proposed* location to nearest property or lease line, Ft.
(Also to nearest drill unit line, if any)

330' FWL

16. No. of acres in lease

320

17. No. of acres assigned to this well

40(forty)

18. Distance from proposed location* to nearest well drilling, completed, or applied for, on this lease, ft

990'

19. Proposed Depth

5100'

20. Rotary or Cable Tools

Rotary

21. Elevations (Show whether DF, RT, GR, ect.)

3277 GR

22. Approx date work will start*

ASAP

23. PROPOSED CASING AND CEMENTING PROGRAM

Size of Hole	Grade, Size of Casing	Weight Per Foot	Setting Depth	Quantity of Cement
17 1/2"	13 5/8" 13 3/8"	54.50	650	570sx Class C (Circ)
12 1/4"	12 1/4" 8 5/8"	24	1750	343sx Class C (Circ)
7 7/8"	5 1/2"	15.5	5100	556sx Class H (tie back)

Merit Energy Company proposes to drill and test the Delaware & intermediate formations. Approx. 650' surface casing will be set & cemented to surface.

Mud Program FW to 5100',

BOPE Program: BOPE will be installed at the offset and tested daily for operational condition.

IN ABOVE SPACE DESCRIBE PROPOSED PROGRAM: If proposal is to deepen, give data on present productive zone and proposed new productive zone. If proposal is to drill or deepen directionally, give pertinent data on subsurface locations and measured and true vertical depths. Give blowout preventer program, if any.

24. Signed Richard L. Manin Title West District, Operations Supt

Date 30-May-96

(This space for Federal or State office use)

Permit No. _____ Approval Date _____

Application approval does not warrant or certify that the applicant hold legal or equitable title to those rights in the subject lease which would entitle the applicant to conduct operations thereon.

Conditions of approval if any:

(ORIG SGD) RICHARD L. MANIN Title Area Manager
Approved by _____ Date AUG 27 1996

*See Instruction of Reverse Side

Title 18 U.S.C., Section 1001, makes it a crime for any person knowingly and willfully to make to any department or agency of the United States any false, fictitious or fraudulent statements or representations as to any matter within its jurisdiction.

DISTRICT I
P.O. Box 1980, Hobbs, NM 88241-1980

DISTRICT II
P.O. Drawer DD, Artesia, NM 88211-0719

DISTRICT III
1000 Rio Brazos Rd., Artec, NM 87410

DISTRICT IV
P.O. BOX 2088, SANTA FE, N.M. 87504-2088

State of New Mexico
Energy, Minerals and Natural Resources Department

Form C-102
Revised February 10, 1994
Submit to Appropriate District Office
State Lease - 4 Copies
Fee Lease - 3 Copies

OIL CONSERVATION DIVISION

P.O. Box 2088
Santa Fe, New Mexico 87504-2088

☐ AMENDED REPORT

WELL LOCATION AND ACREAGE DEDICATION PLAT

API Number 30-015-29-21	Pool Code 79131	Pool Name Happy Valley Delaware
Property Code	Property Name FEDERAL "L"	Well Number 3
OGRID No.	Operator Name MERIT ENERGY COMPANY	Elevation 3277

Surface Location

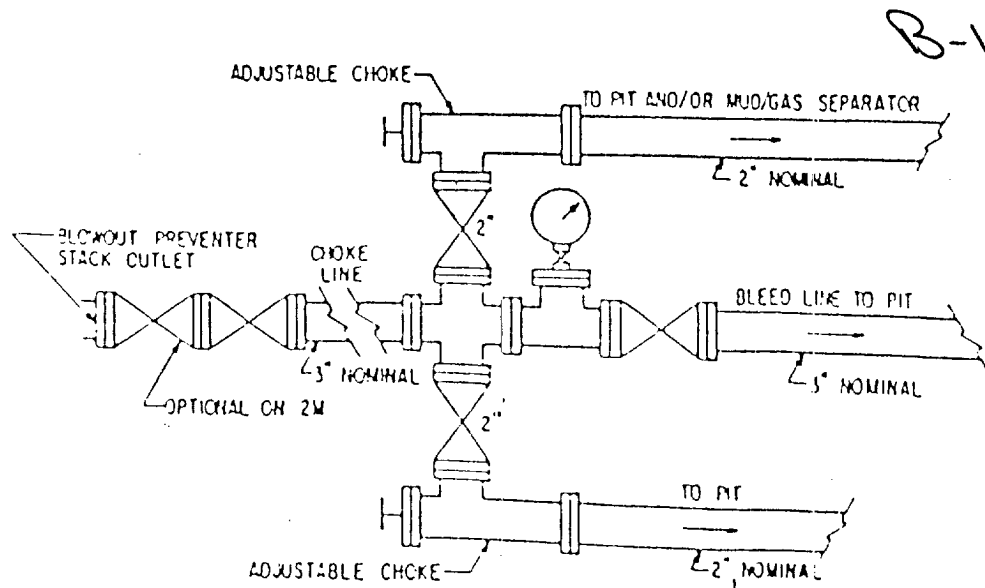
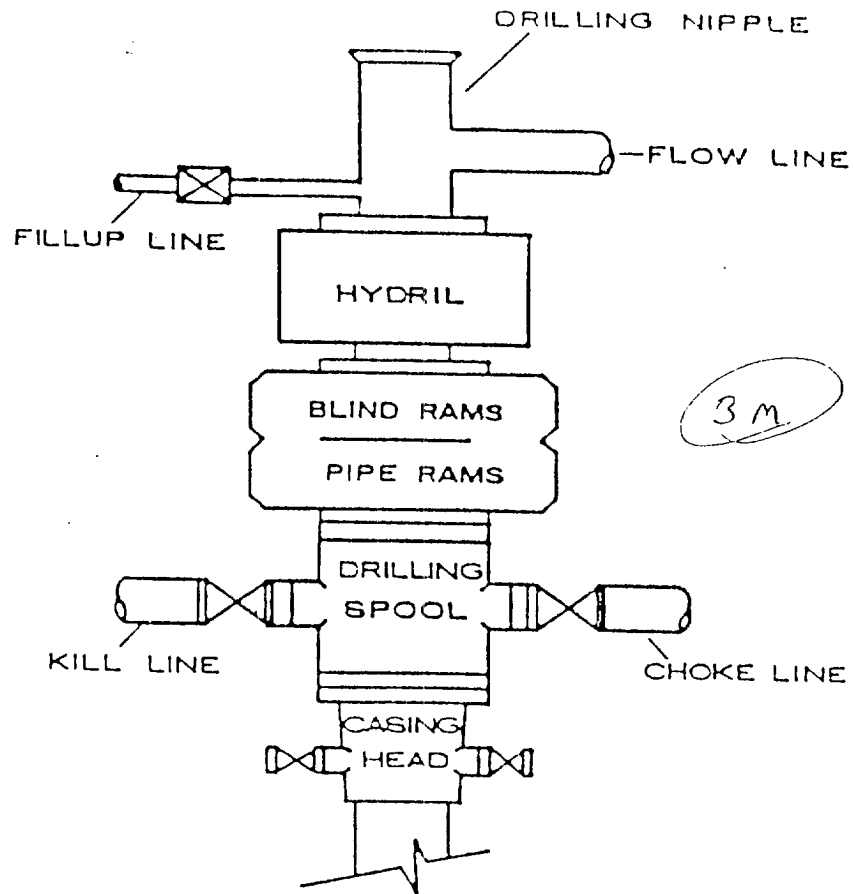
UL or lot No. L	Section 34	Township 22 S	Range 26 E	Lot Idn	Feet from the 2130	North/South line SOUTH	Feet from the 330	East/West line WEST	County EDDY
--------------------	---------------	------------------	---------------	---------	-----------------------	---------------------------	----------------------	------------------------	----------------

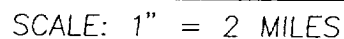
Bottom Hole Location If Different From Surface

UL or lot No.	Section	Township	Range	Lot Idn	Feet from the	North/South line	Feet from the	East/West line	County
Dedicated Acres 40	Joint or Infill	Consolidation Code	Order No.						

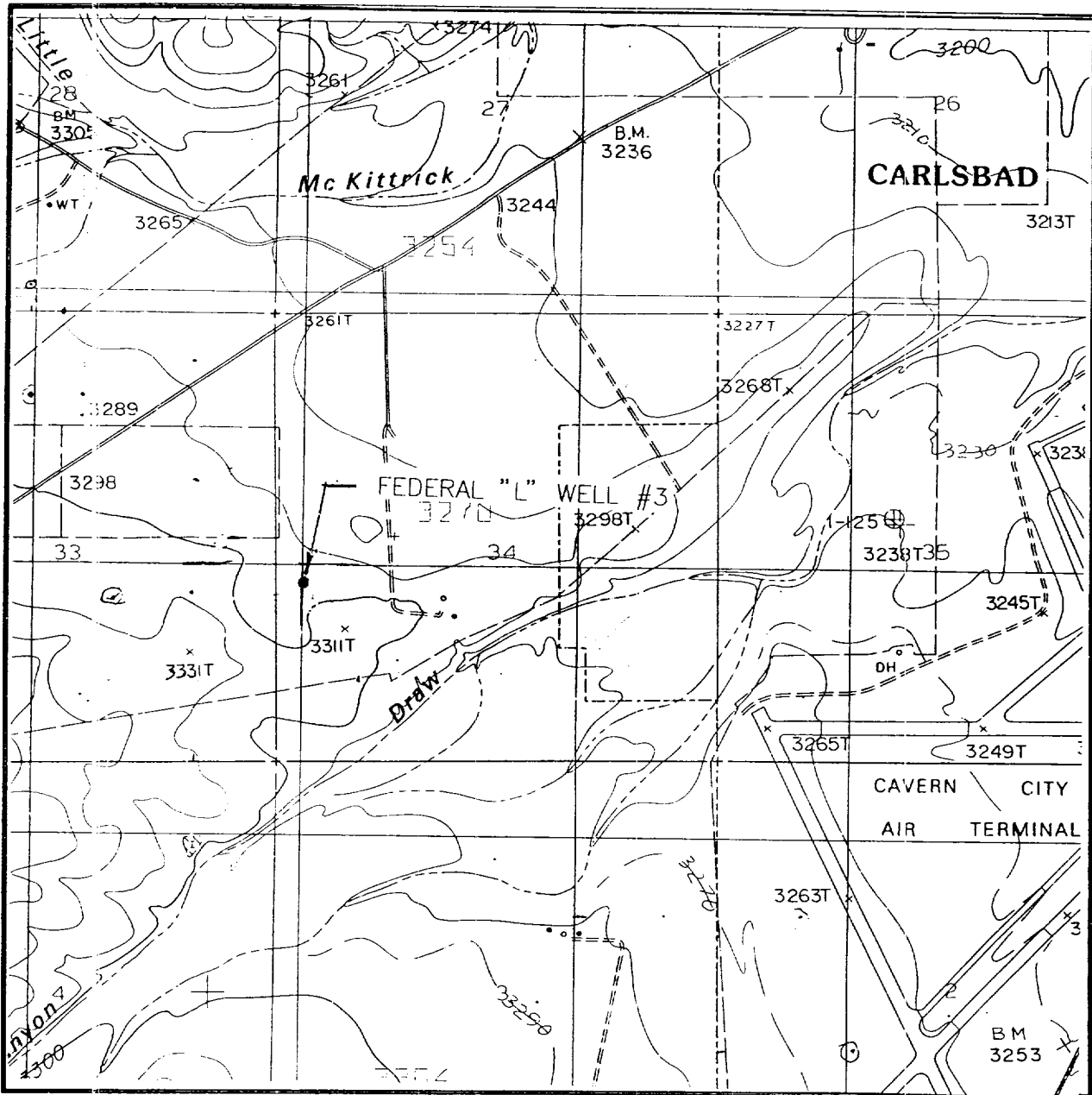
NO ALLOWABLE WILL BE ASSIGNED TO THIS COMPLETION UNTIL ALL INTERESTS HAVE BEEN CONSOLIDATED
OR A NON-STANDARD UNIT HAS BEEN APPROVED BY THE DIVISION

<p>3281.0' 3276.7'</p> <p>3287.7' 3302.2'</p> <p>DETAIL</p> <p>SEE DETAIL</p> <p>330'</p> <p>2130'</p>	OPERATOR CERTIFICATION I hereby certify the information contained herein is true and complete to the best of my knowledge and belief. Signature: <u>Russell Whited</u> Printed Name: <u>Russell Whited</u> Title: <u>Operation Supt.</u> Date: <u>5-30-96</u>
	SURVEYOR CERTIFICATION I hereby certify that the well location shown on this plat was plotted from field notes of actual surveys made by me or under my supervision and that the same is true and correct to the best of my belief. APRIL 10, 1995 Date Surveyed: _____ Signature & Seal of Professional Surveyor: <u>Ronald J. Eidson</u> 4-10-96 W.O. Num. 96-11-0414 Certificate No. JOHN W. WEST 676 RONALD J. EIDSON 3239 GARY EIDSON 12641

BOP STACK



**JOHN WEST ENGINEERING
HOBBS, NEW MEXICO
(505) 393-3117**



SCALE: 1" = 2000'

CONTOUR INTERVAL:
KITCHEN COVE- 20'

SEC. 34 TWP. 22-S RGE. 26-E

SURVEY N.M.P.M.

COUNTY EDDY

DESCRIPTION 2130' FNL & 330' FWL

ELEVATION 3277

OPERATOR MERIT ENERGY COMPANY

LEASE FEDERAL "L"

U.S.G.S. TOPOGRAPHIC MAP

KITCHEN COVE, N.M.

JOHN WEST ENGINEERING
HOBBS, NEW MEXICO
(505) 393-3117