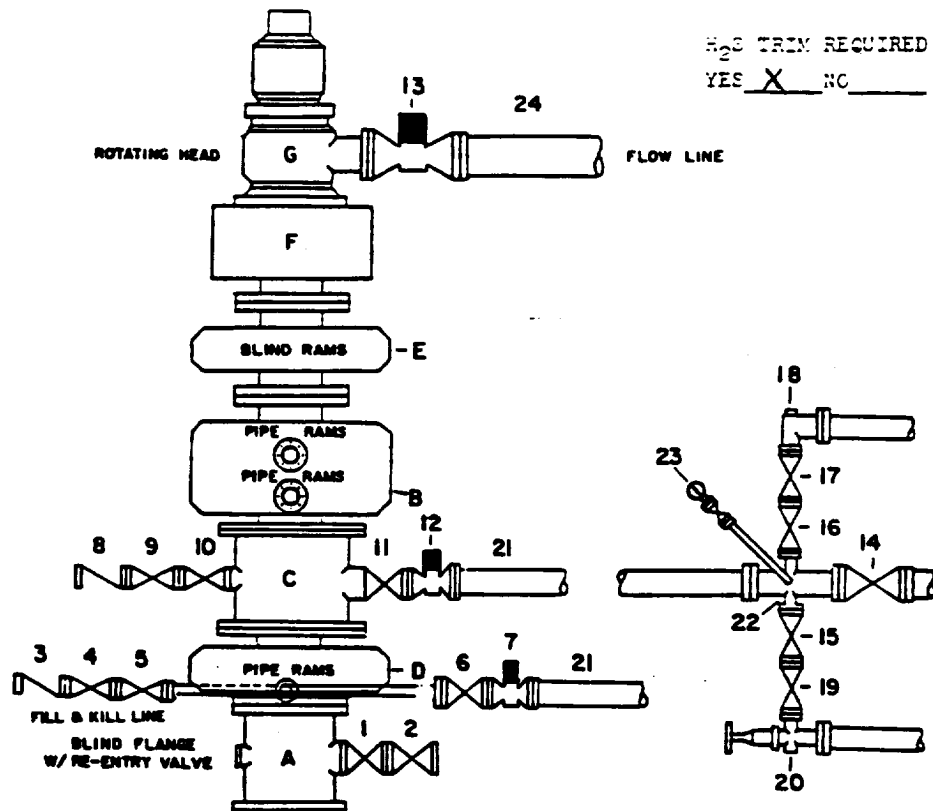


# DRILLING CONTROL

## CONDITION V-10,000 WP



H<sub>2</sub>S TRIM REQUIRED  
YES ☒ NO ☐

### DRILLING CONTROL

#### MATERIAL LIST - CONDITION V

- A Texaco Wellhead
- B 10,000# W.P. Dual Ram Type preventer, hydraulic operated with 1" steel, 5000# W.P. control lines
- C 10,000# W.P. Drilling Spool with a minimum 2" flanged outlet for kill line and 4" minimum flanged outlet for choke line
- D,E 10,000# W.P. Single Ram type preventer, hydraulic operated with 1" steel, 5000# W.P. control lines or double ram type.
- F 10,000# W.P. Annular Preventer, hydraulic operated with 1" steel, 5000# W.P. control lines
- G When Required - Rotating Head
- 1,2,4,5, 9,10,15 2" minimum 10,000# W.P. flanged full opening steel gate valve, or Halliburton Lo Torc Plug valve
- 16,17,19
- 3,8 2" minimum 10,000# W.P. back pressure valve
- 6,11,14 4" minimum 10,000# W.P. flanged full opening steel gate valve
- 7,12 4" minimum 10,000# W.P. flanged full opening hydraulic valve
- 13 When Required - 10" minimum 1000# W.P. flanged full opening hydraulic valve
- 21 4" minimum 10,000# W.P. 4130 mechanical tubing with flanged ends, or equivalent
- 22 2" minimum x 4" minimum 10,000# W.P. flanged cross
- 18 2" minimum 10,000# W.P. automatic choke
- 20 2" minimum 10,000# W.P. adjustable choke equipped with carbide trim
- 23 Cameron Mud Gauge or equivalent (location in choke line optional)
- 24 When Required - 10" steel flow line



**TEXACO, INC.**  
MIDLAND DIVISION  
MIDLAND, TEXAS



SCALE	DATE	EST. NO.	DRG. NO.
DRAWN BY			
CHECKED BY			
APPROVED BY			

EXHIBIT G