

UNITED STATES
DEPARTMENT OF THE INTERIOR
BUREAU OF LAND MANAGEMENT

FORM APPROVED
Budget Bureau No. 1004-0136
Expires: December 31, 1991

SUBMIT IN TRIPLICATE

RECEIVED

APPLICATION FOR PERMIT TO DRILL OR DEEPEN

1a. Type of Work **DRILL** **DEEPEN** **MAR 26 1997**
 1b. Type of Well **SINGLE ZONE**
 OIL WELL GAS WELL OTHER **OIL CON. DIV.**

2. Name of Operator **TEXACO EXPLORATION & PRODUCTION DISTRICT 22351**

3. Address and Telephone No. **P.O. Box 3109, Midland Texas 79702 688-4606**

4. Location of Well (Report location clearly and in accordance with any State requirements. *)
 At Surface
 Unit Letter H : **1650** Feet From The **NORTH** Line and **990** Feet From The **EAST** Line
 At proposed prod. zone
SAME

14. Distance In Miles and Direction from Nearest Town or Post Office*
30 MILES EAST OF CARLSBAD, NM

15. Distance From Proposed* Location to Nearest Property or Lease Line, Ft. (also to nearest drlg. unit line, if any) **990'**

18. Distance From Proposed Location* to Nearest Well, Drilling, Completed or Applied For, On This Lease, Ft. **1046'**

21. Elevations (Show whether DF, RT, GR, etc.)
GR-3589'

5. Lease Designation and Serial No.
NM 25876

6. If Indian, Alottee or Tribe Name

7. If Unit or CA, Agreement Designation

8. Well Name and Number
GETTY '24' FEDERAL
13 17351 10947

9. API Well No.
30-015-29470

10. Field and Pool, Exploratory Area
LIVINGSTON RIDGE DELAWARE 39360

11. SEC., T., R., M., or BLK. and Survey or Area
 Sec. **24**, Township **22-S**, Range **31-E**

12. County or Parish **EDDY** 13. State **NM**

17. No. of Acres Assigned To This Well
40

20. Rotary or Cable Tools
ROTARY

22. Approx. Date Work Will Start*
3/15/97

23. **PROPOSED CASING AND CEMENT PROGRAM CARLSBAD CONTROLLED WATER BASIN**

SIZE OF HOLE	GRADE, SIZE OF CASING	WEIGHT PER FOOT	SETTING DEPTH	QUANTITY OF CEMENT
14 3/4	WC50, 11 3/4	42#	800'	500 SACKS - CIRCULATE WITNESS
11	WC50, J55, 8 5/8	32#	4400'	1060 SACKS - CIRCULATE
7 7/8	WC50, WC70, 5 9/8, 5 1/2"	17#	8550'	1500 SACKS - CIRCULATE

CEMENTING PROGRAM:
 SURFACE CASING - 500 SACKS CLASS C W/ 2% CACL2 (14.8 PPG, 1.34 CF/S, 6.3 GW/S).
 INTERMEDIATE CASING - 900 SACKS 35/65 POZ CLASS H W/ 6% GEL, 5% SALT, 1/4# FLOCELE (12.4 PPG, 2.14 CF/S, 11.9 GW/S). F/B 150 SACKS CLASS H (15.6 PPG, 1.18 CF/S, 5.2 GW/S).
 PRODUCTION CASING - 1st STG: 800 SACKS 50/50 POZ H w/ 2% GEL, 5% SALT, 1/4# FC (14.2 PPG, 1.35 CF/S, 6.3 GW/S).
 DV TOOL @ 5500' - 2nd STG: 600 SACKS 35/65 POZ CLASS H W/ 6% GEL, 5% SALT, 1/4# FLOCELE (12.4 PPG, 2.14 CF/S, 11.9 GW/S). F/B 100 SACKS CLASS H (15.6 PPG, 1.18 CF/S, 5.2 GW/S)

DAYS TO DRILL: 15 DAYS. DAYS TO COMPLETE: 14 DAYS.
 THERE ARE NO OTHER OPERATORS IN THIS QUARTER QUARTER SECTION.

APPROVAL SUBJECT TO
 GENERAL REQUIREMENTS AND
 SPECIAL STIPULATIONS
 ATTACHED
*Post ID-1
 4-5-97
 Doc + API*

In Above Space Describe Proposed Program: If proposal is to deepen, give data on present productive zone and proposed new productive zone. If proposal is to drill or deepen directionally, give pertinent data on subsurface locations and measured true verticle depths. Give blowout preventer program, if any.

24. I hereby certify that the foregoing is true and correct
 SIGNATURE C. Wade Howard TITLE Eng. Assistant DATE 2/4/97
 TYPE OR PRINT NAME C. Wade Howard

PERMIT NO. _____ APPROVAL DATE _____

Application approval does not warrant or certify that the applicant holds legal or equitable title to those rights in the subject lease which would entitle the applicant to conduct operations thereon.
 APPROVED BY Richard A. Shirley TITLE Acting State Director DATE 3-20-97
 CONDITIONS OF APPROVAL, IF ANY:

DISTRICT I
P. O. Box 1980, Hobbs, NM 88240

DISTRICT II
P. O. Drawer DD, Artesia, NM 88210

DISTRICT III
1000 Rio Brazos Rd., Aztec, NM 87410

DISTRICT IV
P. O. Box 2088, Santa Fe, NM 87504-2088

State of New Mexico
Energy, Minerals and Natural Resources Department

Form C-102
Revised February 10, 1994

Instructions on back

OIL CONSERVATION DIVISION

PO Box 2088
Santa Fe, NM 87504-2088

Submit to Appropriate District Office

State Lease-4 copies
Fee Lease-3 copies

AMENDED REPORT

WELL LOCATION AND ACREAGE DEDICATION PLAT

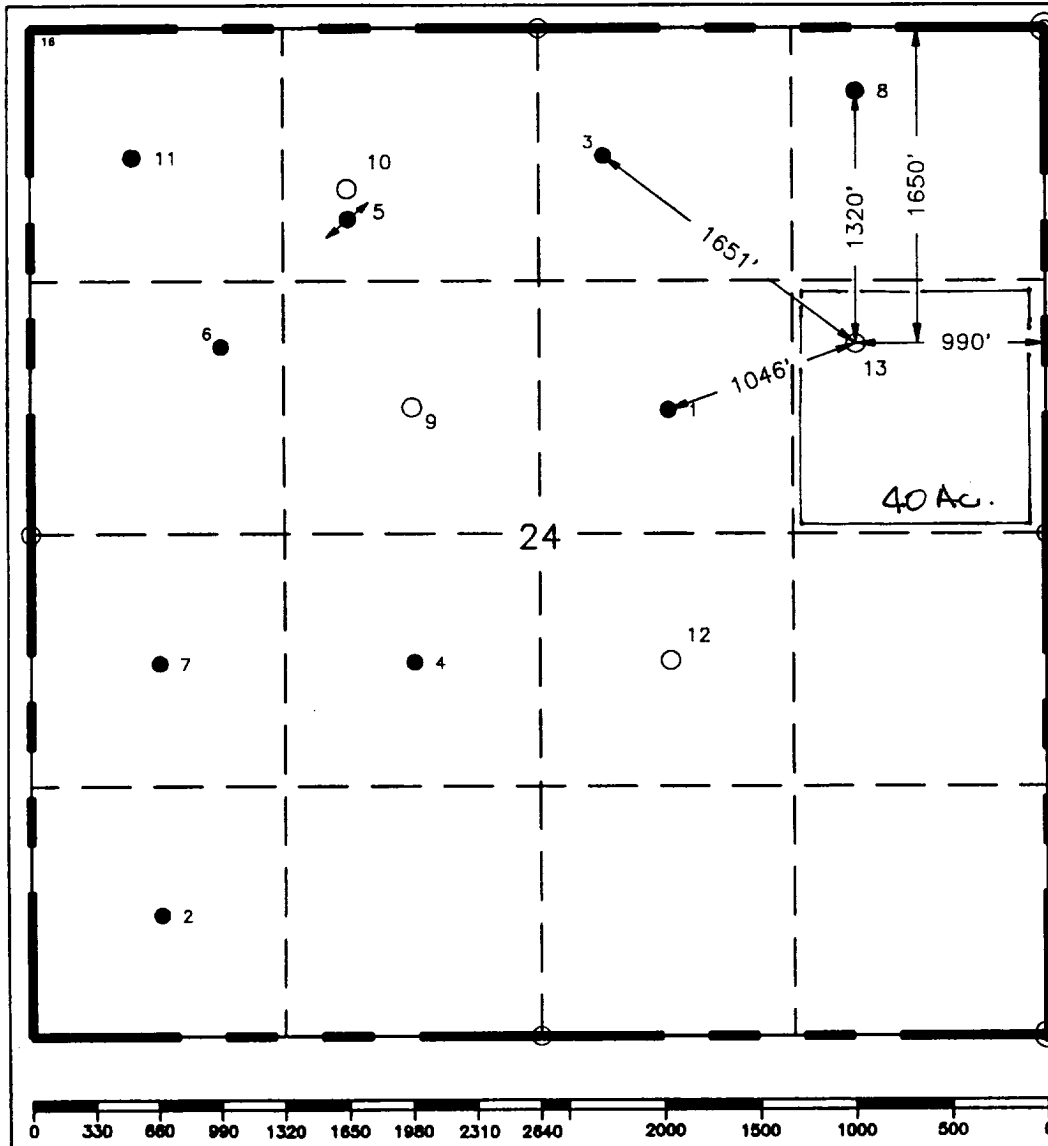
¹ API Number		² Pool Code		³ Pool Name	
				Livingston Ridge-Delaware	
⁴ Property Code 10947		⁵ Property Name Getty "24" Federal			⁶ Well Number 13
⁷ GRID No. 22351		⁸ Operator Name TEXACO EXPLORATION & PRODUCTION, INC.			⁹ Elevation 3589'

¹⁰ Surface Location									
UL or lot no.	Section	Township	Range	Lot Idn	Feet from the	North/South line	Feet from the	East/West line	⁷ County
H	24	22-S	31-E		1650'	North	990'	East	Eddy

¹¹ Bottom Hole Location If Different From Surface									
UL or lot no.	Section	Township	Range	Lot Idn	Feet from the	North/South line	Feet from the	East/West line	⁷ County

¹² Dedicated Acres 40	¹³ Joint or Infill	¹⁴ Consolidation Code	¹⁵ Order No.
-------------------------------------	-------------------------------	----------------------------------	-------------------------

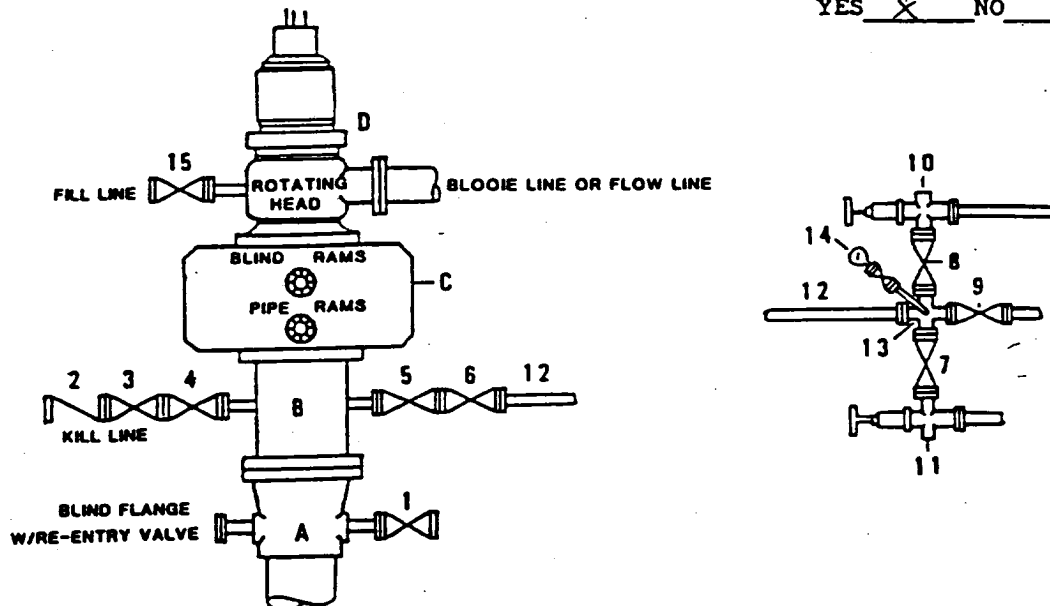
NO ALLOWABLE WILL BE ASSIGNED TO THIS COMPLETION UNTIL ALL INTERESTS HAVE BEEN CONSOLIDATED OR A NON-STANDARD UNIT HAS BEEN APPROVED BY THE DIVISION.



¹⁶ OPERATOR CERTIFICATION	
I hereby certify that the information contained herein is true and complete to the best of my knowledge and belief.	
Signature	<i>C. Wade Howard</i>
Printed Name	C. Wade Howard
Position	Engineer's Assistant
Company	Texaco Expl. & Prod. Inc.
Date	February 4, 1997
¹⁷ SURVEYOR CERTIFICATION	
I hereby certify that the well location shown on this plat was plotted from field notes of actual surveys made by me or under my supervision, and that the same is true and correct to the best of my knowledge and belief.	
Date Surveyed	January 24, 1997
Signature & Seal of Professional Surveyor	<i>John S. Piper</i>
Certificate No.	7254 John S. Piper
Sheet 8 of 8	

**DRILLING CONTROL
CONDITION II-B 3000 WP
FOR AIR DRILLING OR
WHERE NITROGEN OR AIR BLOWS ARE EXPECTED**

H₂S TRIM REQUIRED
YES NO



**DRILLING CONTROL
MATERIAL LIST - CONDITION II - B**

- | | |
|----------------|---|
| A | Texaco Wellhead |
| B | 3000# W.P. drilling spool with a 2" minimum flanged outlet for kill line and 3" minimum flanged outlet for choke line. |
| C | 3000# W.P. Dual ram type preventer, hydraulic operated with 1" steel, 3000# W.P. control lines (where sub-structure height is adequate, 2 - 3000# W.P. single ram type preventers may be utilized). |
| D | Rotating Head with fill up outlet and extended Bleed Line. |
| 1,3,4,
7,8, | 2" minimum 3000# W.P. flanged full opening steel gate valve, or Halliburton Lo Torc Plug valve. |
| 2 | 2" minimum 3000# W.P. back pressure valve. |
| 5,6,9 | 3" minimum 3000# W.P. flanged full opening steel gate valve, or Halliburton Lo Torc Plug valve. |
| 12 | 3" minimum schedule 80, Grade "B", seamless line pipe. |
| 13 | 2" minimum x 3" minimum 3000# W.P. flanged cross. |
| 10,11 | 2" minimum 3000# W.P. adjustable choke bodies. |
| 14 | Cameron Mud Gauge or equivalent (location optional in choke line). |
| 15 | 2" minimum 3000# W.P. flanged or threaded full opening steel gate valve, or Halliburton Lo Torc Plug valve. |



TEXACO, INC.
MIDLAND DIVISION
MIDLAND, TEXAS



SCALE	DATE	EST. NO.	DWG. NO.
DRAWN BY			
CHECKED BY			
APPROVED BY			

EXHIBIT C