

## N. M. Oil Cons. Division

811 S. 1ST ST.

ARTESIA, NM 88210-2834

Form 3160-3  
(July 1992)SUBMIT IN TRIPPLICATE  
(Other instructions on  
reverse side)FORM APPROVED  
OMB NO. 1004-0136  
Expires: February 28, 1995UNITED STATES  
DEPARTMENT OF THE INTERIOR  
BUREAU OF LAND MANAGEMENT

## APPLICATION FOR PERMIT TO DRILL OR DEEPEN

1a. TYPE OF WORK  
DRILL ☒ DEEPEN ☐

b. TYPE OF WELL  
OIL WELL ☒ GAS WELL ☐ OTHER ☐ SINGLE BORE ☐ MULTIPLE BORE ☐

2. NAME OF OPERATOR  
PENWELL ENERGY INC. 147380 (BILL PIERCE)

3. ADDRESS AND TELEPHONE NO.  
1100 ARCO BUILDING 600 N MERINFELD MIDLAND, TEXAS 79701  
Phone 915-683-2534

4. LOCATION OF WELL (Report location clearly and in accordance with any State requirements.)  
At surface: 1880' FNL & 660' FWL SEC. 30 T18S-R31E, EDDY CO. NM  
At proposed prod. zone: SAME  
Unit E Lot 2

5. LEASE DESIGNATION AND SERIAL NO.  
LG-029387-B

6. IF INDIAN, ALLOTTEE OR TRIBE NAME  
WEST SHUGART "30" FEDERAL # 8

7. UNIT AGREEMENT NAME  
19509

8. NAME OR LEASE NAME, WELL NO.  
WEST SHUGART "30" FEDERAL # 8

9. API WELL NO.  
30-015-29548

10. FIELD AND POOL, OR WILDCAT  
WILDCAT 96686

11. FIELD, T. & B. M., OR B.L. AND SURVEY OR AREA  
SEC. 30 T18S-R31E

12. COUNTY OR PARISH  
EDDY CO.

13. STATE  
New Mexico

14. DISTANCE IN MILES AND DIRECTION FROM NEAREST TOWN OR POST OFFICE  
Approximately 8 miles Southeast of Loco Hills New Mexico

15. DISTANCE FROM PROPOSED LOCATION TO NEAREST PROPERTY OR LEASE LINE, FT. (Also to nearest drg. unit line, if any)  
660'

16. NO. OF ACRES IN LEASE  
470

17. NO. OF ACRES ASSIGNED TO THIS WELL  
40

18. DISTANCE FROM PROPOSED LOCATION TO NEAREST WELL, DRILLING, COMPLETED, OR APPLIED FOR, ON THIS LEASE, FT.  
660'

19. PROPOSED DEPTH  
10,500'

20. ROTARY OR CABLE TOOLS  
ROTARY

21. ELEVATIONS (Show whether DF, RT, GR, etc.)  
3594' GR.

22. APPROX. DATE WORK WILL START  
As soon as approved

## 23. PROPOSED CASING AND CEMENTING PROGRAM

SIZE OF HOLE	GRADE SIZE OF CASING	WEIGHT PER FOOT	SETTING DEPTH	QUANTITY OF CEMENT
24"	20" Conductor	.25 Wall Thick.	40'	Cement to surface/Redi-mix
17 1/2"	H-40 13 3/8"	48	450' 500'	400 Sx. Class "C" Neat/3% CaCl
12 1/2"	J-55 8 5/8"	32	2800'	1000 Sx Class "C" Circulate to
7 7/8"	N-80 5 1/2"	17	10500'	1050 Sx Two stage job

1. Drill 25" hole to 40'. set 40' of conductor pipe cement to surface with Redi-mix.
2. Drill 17 1/2" hole to 500'. Run and set 500' of 48# H-40 13 3/8" ST&C casing. Cement with 400 Sx. Class "C" + 3% CaCl circulate cement to surface.
3. Drill 12 1/2" hole to 2800'. Run and set 2800' of 8 5/8" J-55 32# ST&C casing. Cement with 700 Sx. Class "C" light tail in with 300 Sx. Class "C" neat + 2% CaCl circulate cement to surface.
4. Drill 7 7/8" hole to 10,500'. Run and set 10,500' of 5 1/2" 17# N-80 LT&C casing. Cement 1st stage with 450 Sx. Class "H" cement with additives. DV tool set at 6800'± cement 2nd stage with 400 Sx. Class "C" light + additives tail in with 200 Sx. Class "C" light + additives bring cement back to 2600'± into 8 5/8" casing.

IN ABOVE SPACE DESCRIBE PROPOSED PROGRAM: If proposal is to deepen, give data on present productive zone and proposed new productive zone. If proposal is to drill or deepen directionally, give pertinent data on subsurface locations and measured and true vertical depths. Give blowout preventer program, if any.

24. SIGNED [Signature] TITLE Agent APPROVAL SUBJECT TO GENERAL REQUIREMENTS AND SPECIAL STIPULATIONS ATTACHED

(This space for Federal or State office use)

PERMIT NO. \_\_\_\_\_ APPROVAL DATE 03/28/97

Application approval does not warrant or certify that the applicant holds legal or equitable title to those rights in the subject lease which would entitle the applicant to conduct operations thereon.

CONDITIONS OF APPROVAL, IF ANY:

(ORIG. SGD.) TONY L. FERGUSON

ADM, MINERALS

APPROVED BY

TITLE

DATE

4-23-97

DISTRICT I  
P.O. Box 1980, Hobbs, NM 88240

DISTRICT II  
P.O. Drawer DD, Artesia, NM 88210

DISTRICT III  
1000 Rio Brazos Rd., Aztec, NM 87410

State of New Mexico  
Energy, Minerals and Natural Resources Department

Form C-102  
Revised February 10, 1994  
Instruction on back  
Submit to Appropriate District Office  
State Lease - 4 Copies  
Fee Lease - 3 Copies

OIL CONSERVATION DIVISION

P.O. Box 2088  
Santa Fe, New Mexico 87504-2088

☐ AMENDED REPORT

WELL LOCATION AND ACREAGE DEDICATION PLAT

API Number	Pool Code	Pool Name
		WILDCAT
Property Code	Property Name	Well Number
19509	West Shugart "30" Federal	8
OGRID No.	Operator Name	Elevation
147380	Penwell Energy Inc.	3594'

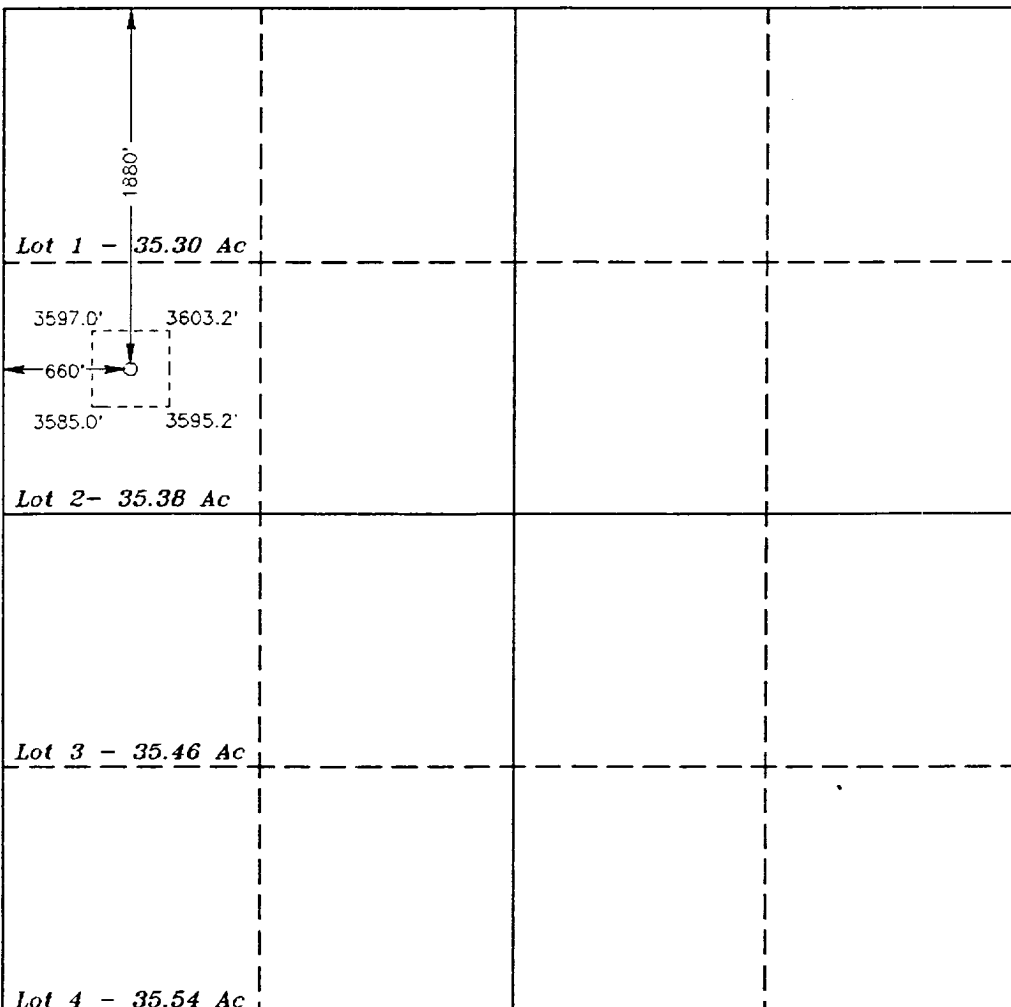
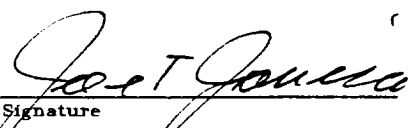
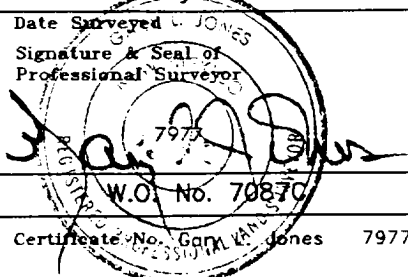
Surface Location

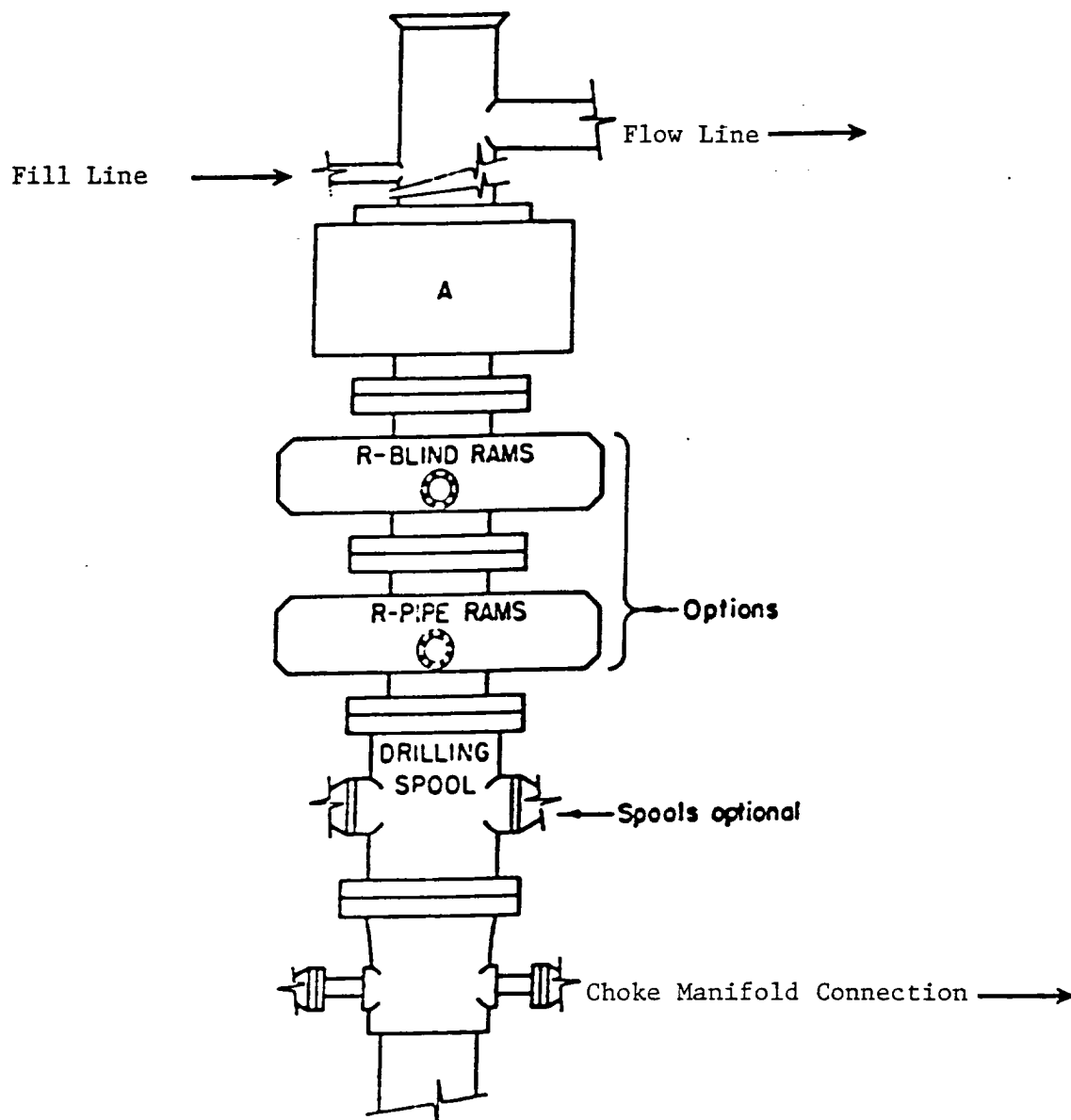
UL or lot No.	Section	Township	Range	Lot Idn	Feet from the	North/South line	Feet from the	East/West line	County
Lot 2	30	18 S	31 E		1880	North	660	West	Eddy

Bottom Hole Location If Different From Surface

UL or lot No.	Section	Township	Range	Lot Idn	Feet from the	North/South line	Feet from the	East/West line	County
Dedicated Acres	Joint or Infill	Consolidation Code	Order No.						
40									

NO ALLOWABLE WILL BE ASSIGNED TO THIS COMPLETION UNTIL ALL INTERESTS HAVE BEEN CONSOLIDATED  
OR A NON-STANDARD UNIT HAS BEEN APPROVED BY THE DIVISION

 <p>Lot 1 - 35.30 Ac</p> <p>3597.0' 3603.2'</p> <p>660' 3585.0' 3595.2'</p> <p>Lot 2 - 35.38 Ac</p> <p>Lot 3 - 35.46 Ac</p> <p>Lot 4 - 35.54 Ac</p>	<p><b>OPERATOR CERTIFICATION</b></p> <p>I hereby certify the the information contained herein is true and complete to the best of my knowledge and belief.</p> <p> Signature</p> <p>Joe T. Janica Printed Name</p> <p>Agent</p> <p>Title</p> <p>03/28/97</p> <p>Date</p> <p><b>SURVEYOR CERTIFICATION</b></p> <p>I hereby certify that the well location shown on this plat was plotted from field notes of actual surveys made by me or under my supervision, and that the same is true and correct to the best of my belief.</p> <p>February 18, 1997</p> <p>Date Surveyed</p> <p>Signature &amp; Seal of Professional Surveyor</p> <p> 7973</p> <p>W.O. No. 70870</p> <p>Certificate No. 7973</p> <p>BASIN SURVEYS</p>
---	---



# **ARRANGEMENT SRRA**

1500 Series  
5000 PSI WP

EXHIBIT "E"  
B.O.P. SKETCH TO BE USED ON  
PENWELL ENERGY, INC.  
WEST SHUGART "30" FEDERAL # 8  
UNIT "E" SECTION 30  
T18S-R31E EDDY CO. NM