

DISTRICT I  
P.O. Box 1900, Hobbs, NM 88241-1900

State of New Mexico  
Energy, Minerals and Natural Resources Department

Form C-102  
Revised February 10, 1994  
Submit to Appropriate District Office  
State Lease - 4 Copies  
Fee Lease - 3 Copies

DISTRICT II  
P.O. Drawer DD, Artesia, NM 88211-0719

OIL CONSERVATION DIVISION  
P.O. Box 2088

DISTRICT III  
1000 Rio Brazos Rd., Aztec, NM 87410

Santa Fe, New Mexico 87504-2088

DISTRICT IV  
P.O. BOX 2088, SANTA FE, N.M. 87504-2088

AMENDED REPORT

WELL LOCATION AND ACREAGE DEDICATION PLAT

API Number	Pool Code 96582	Pool Name LOST TANK WEST DELAWARE
Property Code	Property Name LOST TANK 28 FEDERAL	Well Number 3
OGRID No. 17891	Operator Name POGO PRODUCING CO.	Elevation 3434'

Surface Location

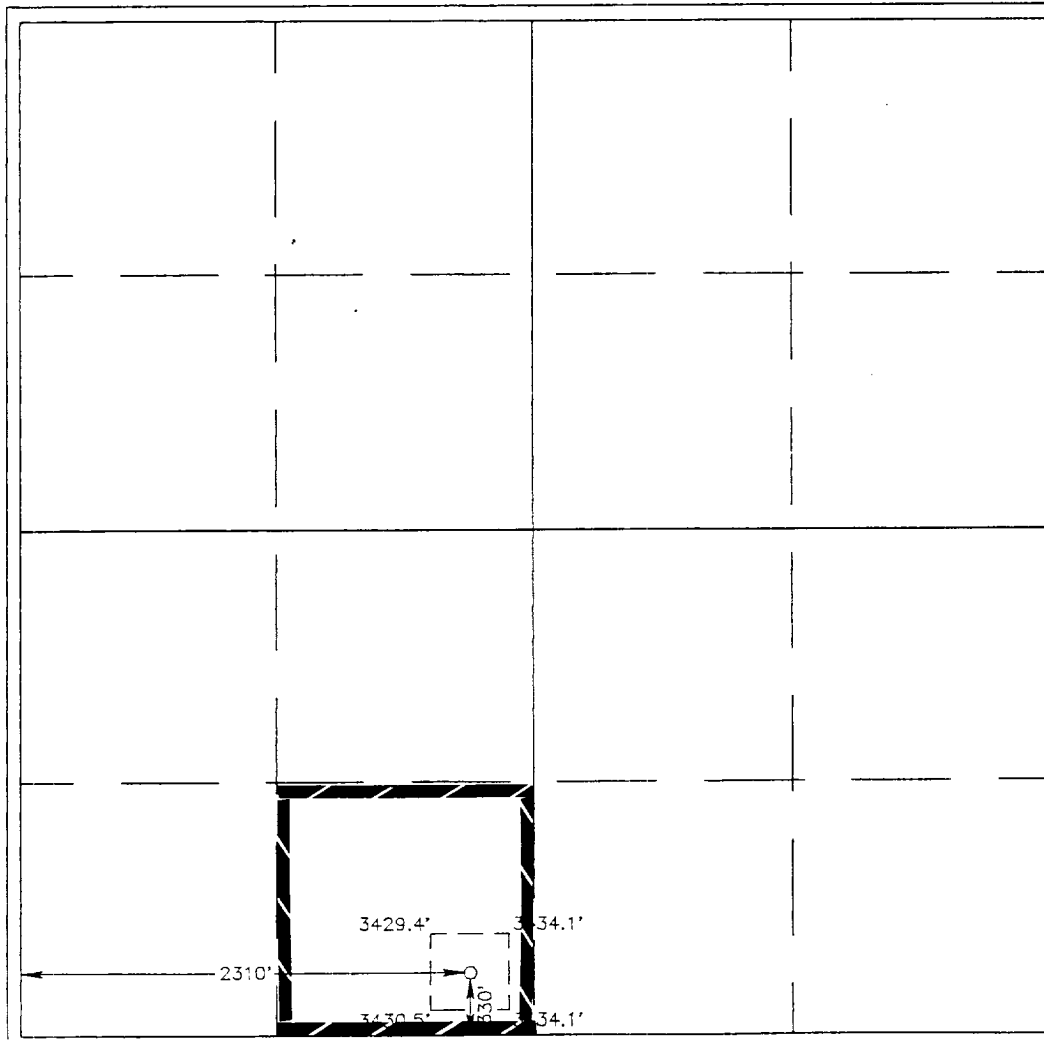
UL or lot No.	Section	Township	Range	Lot Idn	Feet from the	North/South line	Feet from the	East/West line	County
N	28	21 S	31 E		330	SOUTH	2310	WEST	EDDY

Bottom Hole Location If Different From Surface

CL or lot No.	Section	Township	Range	Lot Idn	Feet from the	North/South line	Feet from the	East/West line	County

Dedicated Acres 40	Joint or Infill	Consolidation Code	Order No.
-----------------------	-----------------	--------------------	-----------

NO ALLOWABLE WILL BE ASSIGNED TO THIS COMPLETION UNTIL ALL INTERESTS HAVE BEEN CONSOLIDATED OR A NON-STANDARD UNIT HAS BEEN APPROVED BY THE DIVISION



**OPERATOR CERTIFICATION**

I hereby certify the the information contained herein is true and complete to the best of my knowledge and belief.

*Joe T. Janica*  
Signature

Joe T. Janica  
Printed Name  
Agent

Title

03/12/97  
Date

---

**SURVEYOR CERTIFICATION**

I hereby certify that the well location shown on this plat was plotted from field notes of actual surveys made by me or under my supervision and that the same is true and correct to the best of my belief.

FEBRUARY 28, 1997  
Date Surveyed

CDG

Signature & Seal of  
Professional Surveyor

*Ronald W. Edson*  
RONALD W. EDSON  
3-10-97  
87-11-0413

Certificate No. JOHN W. WEST 676  
RONALD W. EDSON 3239  
GARRETT EDSON 12641