

Mark L. Shidler, Inc.
New Mexico State 1-30
Hightower Field
Lea County, New Mexico

Rework Report

Page 6.

06Dec14 Blew hole in bottom of H-T due to unexpected # increase. Released approx. 25 BO, 110 BW & unest. amount of Nat'l. gas. CWI.



07Dec14 Vac. truck picked up approx. 20 BO & 110 BW & hauled to disposal.



08Dec14 Liberty lease crew begin cleaning up inside firewall. Blow out at WH. Lease crew contact E. Jamarillo, contract pumper. Lease crew construct bypass to blow well to 210 stock tank. Unable to Op. Csg. to bled off #. Contact Maxie Brown w/NM OCD. P. Frier, landowner contact Tatum FD. DXP/Indian Wells Fire & Safety, NM Dept. Public Safety & Lea Co. Dept. Emerg. Mgmt. dispatched to Loc. Evacuate nearby residences. Maintain 24-hour well monitoring.



Mark L. Shidler, Inc.
New Mexico State 1-30
Hightower Field
Lea County, New Mexico

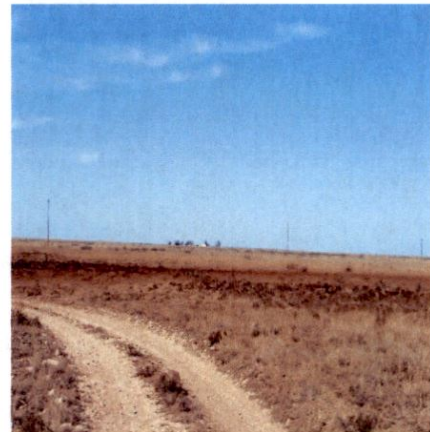
Rework Report

Page 7.
09Dec14

Dispatched Wild Well Control of Midland to Loc. WWC & DXP monitor well. WWC & Liberty Main. prepare plan & arrange Eqpt. to kill well next AM. DXP/Indian Wells Fire & Safety maintain 24-hour monitor at well and surrounding area.

10Dec14

W.O. heavy fog to clear. MI & RU Lobo Pump truck w/90 Bbls. 10# brine & (5) 100 Bbl. transports w/10# brine. Met w/landowners. WWC, DXP, Lobo, Liberty & other field personnel hold safety and procedure meeting. WWC begin securing well, tie flow-back iron to pump truck & test lines to 500#. Op. well, FCP: 325#. Begin pumping 10# brine down 7" Csg. @ in 1.5 BPM @ 350- 400#. Pmp'd. 68 Bbls. & stopped flowing. Con't. to pump until repairs to wellhead are complete. 1700 Hrs. RD & MO Lobo pump truck & transports. Meet with rancher & survey adjacent pasture for damage. Rel. well to pumper. SICP: 0#. SITP: 400#.



Mark L. Shidler, Inc.
New Mexico State 1-30
Hightower Field
Lea County, New Mexico

Rework Report

Page 8.

11Dec14 Liberty Maintenance backhoe scrape oil contaminated around WH for remediation.

