



RECEIVED

By OCD District 1 at 7:50 am, Jul 14, 2015

APPROVED

By OCD District 1 at 7:50 am, Jul 14, 2015

June 29, 2015

VIA EMAIL: Kellie.Jones@state.nm.us

Ms. Kellie Jones,
Environmental Specialist
New Mexico Oil Conservation Division
1624 N. French Drive
Hobbs, New Mexico 88240

Re: 1RP-3593 – Final Report, Paladin Energy Corp. State BT "C" No. 003 Tank Battery Spill, Lea County, New Mexico

Dear Ms. Jones:

Larson & Associates, Inc. (LAI), on behalf of Paladin Energy Corp. (Paladin), submits this final report to the New Mexico Oil Conservation Division (OCD) to present the investigation and remediation of a crude oil and produced water spill at the State BT "C" No. 003 tank battery (Site). The extent of release was determined an additional soil sample from boring SB-3 showing no reportable concentrations of TPH, collection and analysis of groundwater sample southeast (down gradient) of the Site, removal of additional soil in the area of borings SB-1 and SB-2 and installing a poly liner (20 mil thickness) southeast of the tanks. Paladin respectfully requests your approval for no further action. Please contact Mickey Horn with Paladin at (432) 522-2162 or me at (432) 687-0901.

Sincerely,

Larson & Associates, Inc.

A handwritten signature in blue ink, appearing to be 'Mark J. Larson', is written over a horizontal line.

Mark J. Larson, P.G.

President/Sr. Project Manager

mark@laenvironmental.com

cc: Mickey Horn – Paladin Energy Corp.

Encl.

**1RP-3593
FINAL REPORT
STATE BT "C" NO. 003 TANK BATTERY
LEA COUNTY, NEW MEXICO**

LAI Project No. 15-0130-01

June 26, 2015

Prepared for:

Paladin Energy Corp.
10290 Monroe Drive, Suite 301
Fort Worth, Texas 75229

Prepared by:

Larson & Associates, Inc.
507 North Marienfeld Street, Suite 205
Midland, TX 79701



Mark J. Larson

Certified Professional Geologist No. 10490



Table of Contents

1.0	EXECUTIVE SUMMARY	1
2.0	INTRODUCTION	2
2.1	<i>Background and Initial Response</i>	2
2.2	<i>Initial Investigation</i>	2
3.0	REMEDIATION	3
4.0	CONCLUSIONS	3
5.0	RECOMMENDATION	4

List of Figures

Figure 1	Topographic Map
Figure 2	Aerial Map
Figure 3	Site Map
Figure 4	Liner Location

List of Tables

Table 1	Boring Soil Sample Analytical Data Summary
Table 2	Groundwater Sample Analytical Data Summary

List of Appendices

Appendix A	OCD Correspondence
Appendix B	Photographs
Appendix C	Laboratory Reports
Appendix D	Initial and Final C-141

1.0 EXECUTIVE SUMMARY

This report is submitted to the New Mexico Oil Conservation Division (OCD) District 1, in Hobbs, New Mexico, on behalf of Paladin Energy Corp (Paladin), to present the final investigation and remediation of a crude oil and produced water spill at the State BT "C" No. 003 tank battery (Site) located in Lea County, New Mexico. The legal description is Unit L (NW/4, NW/4), Section 35, Township 11 South and Range 33 East. OCD issued remediation project (RP) number 1RP-3593 for the release.

The release was discovered by an OCD inspector, on March 31, 2015. On April 1, 2015, OCD issued a notice of violation to Paladin that required corrective action to be completed by June 5, 2015. Paladin initiated corrective action on April 2, 2015, that included excavating soil from around the tanks, south, west and southeast of the tank. The soil was disposed at the Gandy Marley land fill located west of Tatum, New Mexico.

On April 21, 2015, Larson & Associates, Inc. (LAI) supervised drilling and sampling three (3) borings to approximately 35 feet below ground surface (bgs). A boring was drilled to groundwater southeast (down gradient) of the Facility. Groundwater was measured at about 40 feet bgs and a groundwater sample was collected and analyzed for BTEX and chloride.

On May 21, 2015, OCD District 1 in Hobbs, New Mexico granted Paladin conditional approval for the following:

- Excavate soil to the extent feasible from the vicinity of borings SB-1 and SB-2;
- Ensure there are two sample points on SB-3 that are below regulated limits;
- Show locations of composite samples on map;
- Investigate possibility of adding liner in the SB-3, SE corner;
- Take ground water sample.

On May 28 – 29, 2015, LAI personnel supervised soil excavation from the area around borings SB-1 and SB-2. About 275 cubic yards of soil was excavated to caliche between about 1 and 2 feet bgs and disposed at Gandy Marley Landfill.

TPH was less than the analytical method RL in sample SB-3, 25 feet, therefore, two samples from SB-3, 20 and 25 feet were below the TPH method reporting limit;

On June 22, 2015, paladin installed a 20-mil thickness liner southeast of the tanks;

A groundwater sample was collected about 100 feet southeast (down gradient) of the Facility and reported BTEX below the analytical method RL and chloride at 40.4 milligrams per liter (mg/L). The chloride concentration is below the New Mexico Water Quality Control Commission (WQCC) domestic water quality standard (250 mg/L).

Paladin respectfully requests no further action for the release.

2.0 INTRODUCTION

This report is submitted to the New Mexico Oil Conservation Division (OCD) on behalf of Paladin Energy Corp (Paladin) to present the investigation and remediation of a crude oil and produced water spill at the State BT "C" No. 003 tank battery (Site). The Site is located in Unit L (NW/4, SW/4), Section 35, Township 11 South, Range 33 east, in Lea County, New Mexico. The geodetic position is north 33° 19' 07.188" and west 103° 35' 20.946". Figure 1 presents a location and topographic map. Figure 2 presents an aerial map.

2.1 Background and Initial Response

On March 31, 2015, an inspector with OCD District 1, in Hobbs, New Mexico, discovered the spill. On April 1, 2015, OCD issued a letter of violation to Paladin requiring, among other things, filing form C-141 and performing corrective action by June 5, 2015.

The spill occurred from failure of a pressure relief (pop-off) valve at the free water knockout that released about 15 barrels (bbl) of oil and 40 bbl of water. The spill was contained inside the firewall and about 7 bbl of fluid (oil and water) was recovered. On April 2, 2015, Paladin initiated corrective actions that included excavating visually contaminated soil from around the tanks, southeast and west of the tanks. The contaminated soil was hauled to the Gandy Marley landfill (NM1-19-0) located west of Tatum, New Mexico. Remediation project (RP) number 1RP-3593 was assigned to the release.

2.2 Initial Investigation

On April 7, 2015, LAI personnel collected initial 5-spot composite samples (TBC-A and TBC-B) from excavations south and southeast of the tanks. The samples were analyzed for benzene and total BTEX (sum of benzene, toluene, ethyl benzene and xylenes) by EPA SW-846 method 8021B, total petroleum hydrocarbon (TPH), as combine gasoline (GRO) and diesel (DRO) organic fractions, by EPA SW-846 method 8015B and chloride by EPA method 300. Benzene and total BTEX were below the OCD recommended remediation action levels (RRAL) of 10 milligrams per kilogram (mg/Kg) and 50 mg/Kg, respectively. TPH was 1,432.14 mg/Kg (TBC-1) and 12,900.58 mg/Kg (TBC-B) and exceeded the RRAL (100 mg/Kg). Chloride was 350 mg/Kg (TBC-A) and 971 mg/Kg (TBC-B).

On April 21, 2015, LAI supervised drilling of 3 air rotary drilled borings by Scarborough Drilling, Inc. (SDC) northwest (SB-1), southwest (SB-2) and southeast (SB-3) of the tanks. The borings were drilled to about 35 feet bgs and samples were collected every 5 feet with a jam tube sampler. The laboratory reported benzene below the analytical method reporting limit (RL) and total BTEX below the RRAL (50 mg/Kg). TPH exceeded the RRAL boring SB-1 at 0 (10,200 mg/Kg) and 5 (3,580 mg/Kg) feet, SB-2 at 0 (2,050 mg/Kg) feet and SB-3 at 0 (756 mg/Kg, 5 (860 mg/Kg), 10 (177 mg/Kg) and to 10 (298 mg/Kg) feet bgs. Chloride decreased below 250 mg/Kg in boring SB-1 (15 feet), SB-2 (35 feet) and SB-3 (5 feet).

On April 21, 2015, a groundwater sample was collected about 100 feet southeast (down gradient) of the tanks and analyzed for BTEX and chloride by EPA SW-846 methods 8021B and 300, respectively. BTEX was not reported above the RL and chloride was 40.4 mg/L.

The results of the initial investigations were compiled in a report titled, *"1RP-3594 Spill Investigation Report, State BT "C" Tank Battery No. 003, Lea County, New Mexico May 11, 2015"* and submitted to the OCD on May 13, 2015.

3.0 FINAL INVESTIGATION

On May 21, 2015 and June 15, 2015, OCD approved the remediation plan with the following conditions:

- Excavate soil to the extent feasible from the vicinity of borings SB-1 and SB-2;
- Ensure there are two sample points on SB-3 that are below regulated limits;
- Show locations of composite samples on map;
- Investigate possibility of adding liner in the SB-3, SE corner;
- Take ground water sample.

Appendix A presents OCD correspondence.

On May 28 – 29, 2015, LAI personnel supervised soil excavation from the area around borings SB-1 and SB-2. About 275 cubic yards of soil was excavated to caliche between about 1 and 2 feet bgs and disposed at Gandy Marley Landfill. Appendix B presents photographs.

TPH was less than the analytical method RL in sample SB-3, 25 feet, therefore, two samples from SB-3, 20 and 25 feet were below the TPH method reporting limit. Table 1 presents the analytical data summary. Appendix C presents the laboratory report.

The locations of the composite samples are shown on Figure3.

On June 22, 2015, Paladin installed a 20-mil thickness liner southeast of the tanks.

A groundwater sample was collected southeast (down gradient) of the Facility and reported BTEX below the analytical method RL and chloride at 40.4 milligrams per liter (mg/L). The chloride concentration is below the New Mexico Water Quality Control Commission (WQCC) domestic water quality standard (250 mg/L). Table 2 presents the groundwater analytical data summary. Appendix C presents the laboratory report.

Between June 23 and 25, 2015, the liner and excavations were backfilled with clean soil and firewall replaced. Appendix B presents photographs. Figure 4 presents the liner location.

4.0 CONCLUSIONS

following conclusions are based on the investigation results:

- Approximately 275 cubic yards of soil was excavated to caliche between about 1 and 2 feet from the tank battery and disposed at Gandy Marley Landfill;
- TPH was delineated with two (2) samples from each boring below the method RL;
- Chloride was delineated below the WQCC domestic water quality standard (250 mg/Kg);
- BTEX was below the analytical method RL and chloride was below the WQCC domestic water quality standard (250 mg/L) in a groundwater sample collected about 100 feet southeast (down gradient) of the tank battery, on April 21, 2015;
- A liner (20 mil thickness) was installed in the bottom of the excavation southeast of the tanks; and the excavations were backfilled with clean soil before replacing the firewall.

5.0 RECDOMMENDATION

Paladin respectfully requests no further action for the spill. Appendix D presents the initial and final C-141.

FIGURES

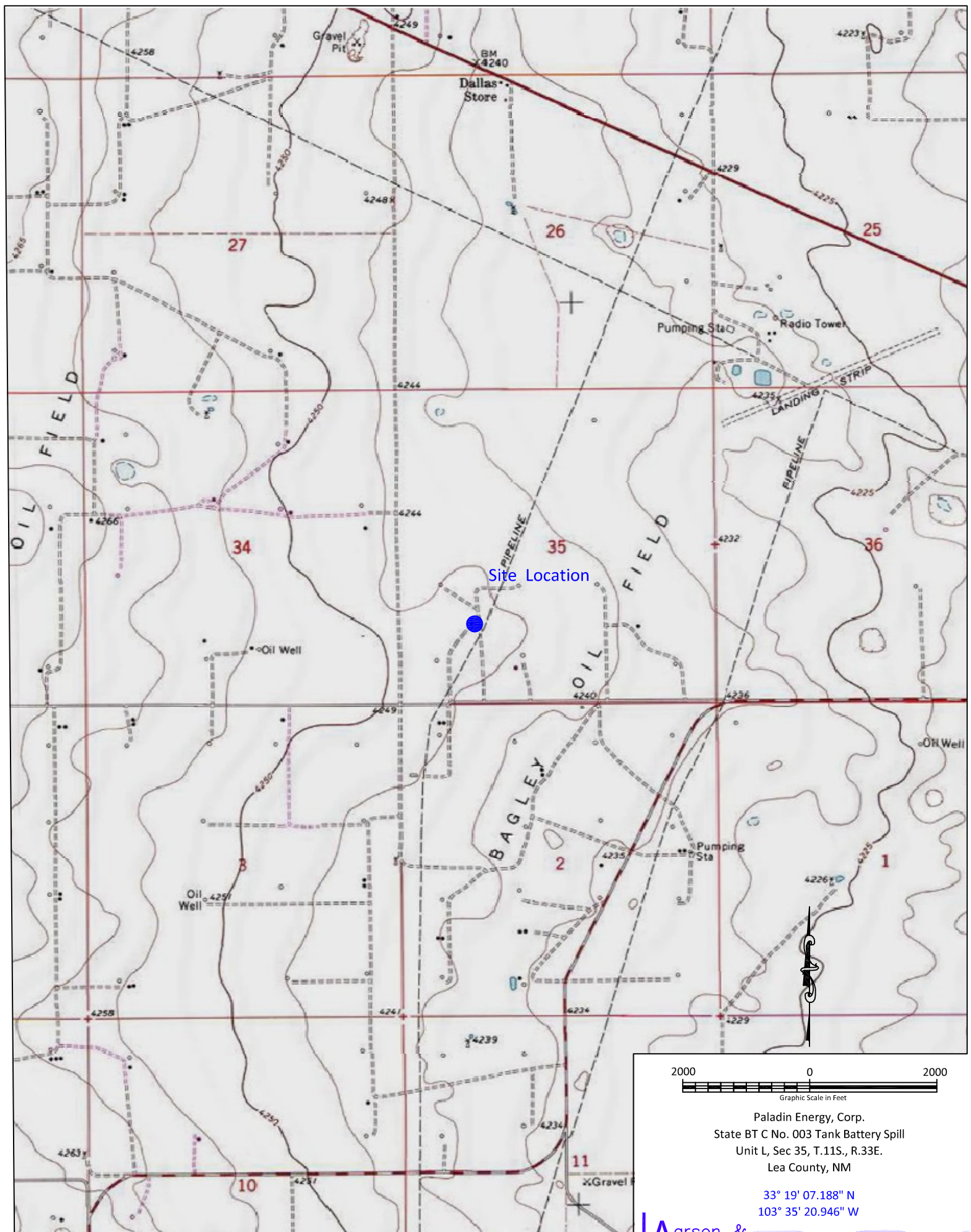
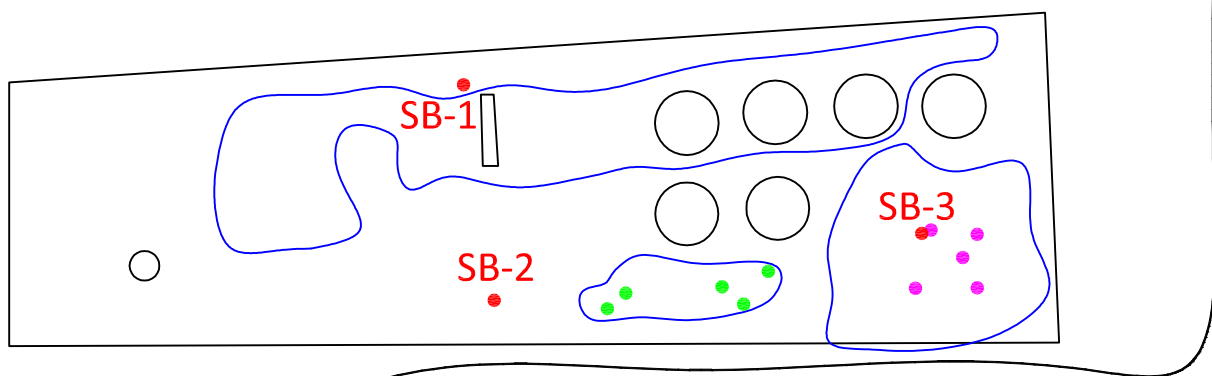


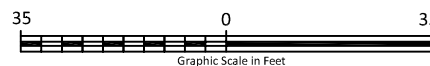
Figure 1 - Topographic Map



Figure 2 - Aerial Map



Groundwater
Sample Location



Paladin Energy, Corp.
State BT C No. 003 Tank Battery Spill
Unit L, Sec 35, T.11S., R.33E.
Lea County, NM

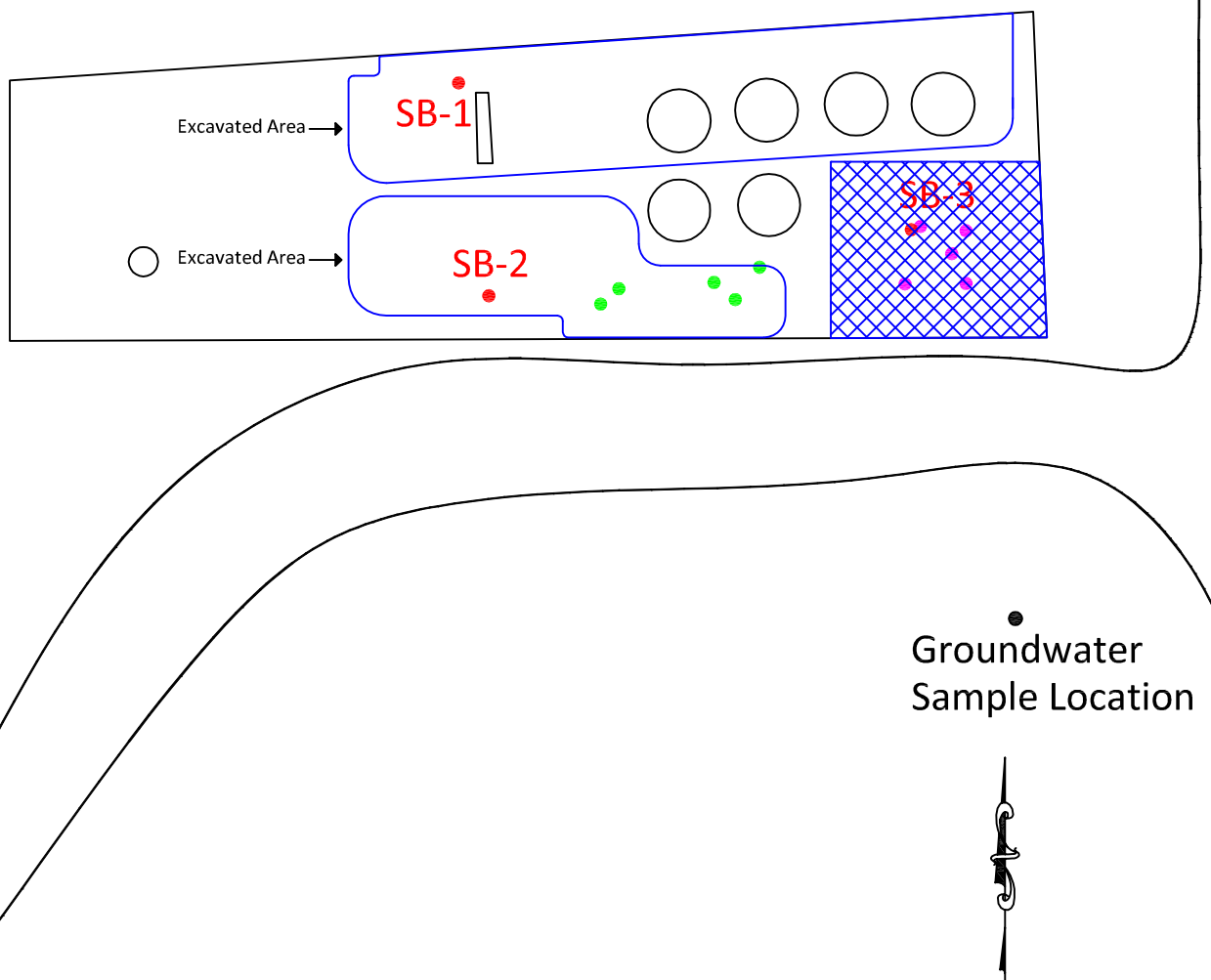
33° 19' 07.188" N
103° 35' 20.946" W

LEGEND

- SB-1 -Soil Boring Location, April 20, 2015
- -TBC - A Location , April 7, 2015
- -TBC - B Location, April 7, 2015
- -Excavated Area

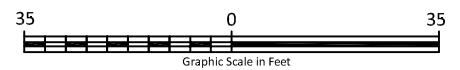
Larson &
Associates, Inc.
Environmental Consultants

Figure 3 - Site Drawing



LEGEND

- SB-1** -Soil Boring Location, April 20, 2015
- -TBC - A Location , April 7, 2015
- -TBC - B Location, April 7, 2015
- -Excavated Area
- ▨ -Area of Liner



Paladin Energy, Corp.
State BT C No. 003 Tank Battery Spill
Unit L, Sec 35, T.11S., R.33E.
Lea County, NM

33° 19' 07.188" N
103° 35' 20.946" W

Larson &
Associates, Inc.
Environmental Consultants

Figure 4 -Remediation Area Map

TABLES

Table 1
Soil Boring Analytical Data Summary
Paladin Energy Corp., State BT "C" No. 003 Tank Battery
Lea County, New Mexico
1RP-3593

Sample	Depth (Feet)	Collection Date	PID (ppm)	Benzene (mg/Kg)	BTEX (mg/Kg)	C6 - C12 (mg/Kg)	>C12 - C28 (mg/Kg)	>C28 - C35 (mg/Kg)	TPH (mg/Kg)	Chloride (mg/Kg)
OCD RRAL:				10	50				100	
SB-1	0	4/21/2015	27.4	--	--	296	9080	833	10,200	420
	5	4/21/2015	264	<0.00111	0.6	493	2780	305	3,580	397
	10	4/21/2015	15	--	--	<27.5	35.1	<27.5	35	280
	15	4/21/2015	11.5	--	--	<26.3	<26.3	<26.3	<26.3	122
	20	4/21/2015	4.4	--	--	<26.6	<26.6	<26.6	<26.6	75
	25	4/21/2015	32.7	--	--	<26.9	35	<26.9	35	67
	30	4/21/2015	4.4	--	--	--	--	--	--	44
	35	4/21/2015	2.6	--	--	--	--	--	--	103
SB-2	0	4/21/2015	22.1	--	--	72.50	1,870	106	2,050	125
	5	4/21/2015	153	<0.00114	0.04555	<28.4	98.6	<28.4	98.6	480
	10	4/21/2015	112	--	--	43.50	399	<25.5	*443	83.3
	15	4/21/2015	57	--	--	<29.8	<29.8	<29.8	<29.8	6.55
	20	4/21/2015	15	--	--	<27.2	<27.2	<27.2	<27.2	72.2
	25	4/21/2015	53.9	--	--	--	--	--	--	4.54
	30	4/21/2015	2.0	--	--	--	--	--	--	440
	35	4/21/2015	18.0	--	--	--	--	--	--	47.7
SB-3	1	4/21/2015	16	--	--	<32.1	685	70.5	756	363
	5	4/21/2015	223	<0.00130	0.3902	137	683	39.4	860	8.78
	10	4/21/2015	130	--	--	<27.5	177	<27.5	177	52.4
	15	4/21/2015	29	--	--	28.7	270	<26.0	298	44.5
	20	4/21/2015	13	--	--	<30.5	<30.5	<30.5	<30.5	<1.22
	25	4/21/2015	7.9	--	--	<26.9	<26.9	<26.9	<26.9	65.4
	30	4/21/2015	2.0	--	--	--	--	--	--	82.3
	35	4/21/2015	2.0	--	--	--	--	--	--	96.1

Notes: Laboratory analysis performed by Permian Basin Environmental Lab, Midland, Texas, by EPA SW-846 methods 8021B (BTEX), 8015M (TPH) and method 300 (chloride).

Depth in feet below ground surface (bgs)

mg/Kg: milligrams per kilogram equivalent to parts per million (ppm)

* Indicates sample may be cross contaminated

Bold indicates that analyte was detected above the method concentration limit

Bold and highlighted indicates that analyte was detected above the OCD recommended remediation action level (RRAL)

Table 2
Groundwater Analytical Data Summary
Paladin Energy Corp., State BT "C" No. 003 Tank Battery
Lea County, New Mexico
1RP-3593

Sample ID	Date	Benzene	Toluene	Ethylbenzene	Xylenes	Chlorides
WQCC Limit:		0.01	0.8	0.75	0.62	250
TMW-1	11/18/2008	<0.00100	<0.00100	<0.00100	<0.00300	40.4

Notes: Analysis performed by Permian Basin Environmental Lab (PBELAB), Midland, Texas
 Analysis performed by EPA method SW-846-8021B (BTEX) and 300.0 (chloride)
 All values reported in milligrams per liter (mg/L) equivalent to parts per million (ppm)
Bold indicates analyte was detected above reporting limit (RL) but below the regulatory limit

APPENDIX A

OCD Correspondence

Mark Larson

From: Jones, Kellie, EMNRD [Kellie.Jones@state.nm.us]
Sent: Thursday, May 21, 2015 8:24 AM
To: Mark Larson
Cc: paladinmid@suddenlink.net; Oberding, Tomas, EMNRD
Subject: RE: 1RP-3593 and 1RP-3594, Paladin Energy Corp., State BT "C" No.003 Tank Battery and State BT "D" Well No. 003

Mark,

Per our conversation on 20 May 2015, the work plans are conditionally approved, with the following conditions:

1RP-3593

1. Ensure there are two sample points on SB-3 that are below regulated limits
2. Show locations of composite samples on map
3. Investigate possibility of adding liner in the SB-3, SE corner
4. Take ground water sample

1RP-3594

1. Drop two additional soil borings
2. Show location of soil boring and composite samples on map
3. Take ground water sample

It was brought up during our conversation that some of the additional data was already at the lab, but just needed to be processed.

If you have any questions, please feel free to contact me. I do appreciate your time and assistance in this matter.

Thanks,

Kellie Jones
Environmental Specialist, District 1
Oil Conservation Division, EMNRD
(575) 393-6161 ext. 111
575-370-3180 (emergency-cell)
E-Mail: kellie.jones@state.nm.us

OCD approval does not relieve the operator of liability should their operations fail to adequately investigate and remediate contamination that may pose a threat to ground water, surface water, human health or the environment. In addition, OCD approval does not relieve the operator of responsibility for compliance with any other federal, state, local laws and/or regulations.

Please note:

- The OCD is no longer granting "risk-based," or standard closure of events/RPs with remediation deferred to site abandonment/sale/closure. The RP will remain open until such time as historic contamination is addressed.
- Photographic documentation is stipulated for all events involving liquids.

If you have any questions or concerns, and for notification, please contact me.

From: Mark Larson [<mailto:Mark@laenvironmental.com>]

Sent: Thursday, May 14, 2015 7:27 AM

To: Oberding, Tomas, EMNRD; Jones, Kellie, EMNRD

Cc: paladinmid@suddenlink.net

Subject: Re: 1RP-3593 and 1RP-3594, Paladin Energy Corp., State BT "C" No.003 Tank Battery and State BT "D" Well No. 003

Dear Dr. Oberding and Ms. Jones,

Please use the link below to download electronic version of the above-referenced report. The report are submitted on behalf of Paladin Energy Corp. (Paladin) and present the investigation and remediation results for spills reported at the State BT "C" No.003 Tank Battery (1RP-3593) and State BT "D" Well No.003 (1RP-3594). Please contact Mickey Horn with Paladin at (432) 634-6599 or me at (432) 687-0901, with any questions you may have or if you cannot open the weblink.

Sincerely,

Mark J. Larson, P.G.
President/Sr. Project Manager
507 N. Marienfeld St., Suite 200
Midland, Texas 79701
Office – 432-687-0901
Cell – 432- 556-8656
Fax – 432-687-0456
mark@laenvironmental.com



Directly below is the link to the remediation report for 15-0130-01, State BT "C". Transmittal letter is included.

<https://files.acrobat.com/a/preview/ac86bb6b-08b2-41ef-b26b-0c5a01a13824>

Directly below is the link to the remediation report for 15-0130-02, State BT "D". Transmittal letter is included.

<https://files.acrobat.com/a/preview/9ff4fe2c-921f-4eb7-89f3-8193ad7389d9>

--

This message has been scanned for viruses and dangerous content by [MailScanner](#), and is believed to be clean.

Mark Larson

From: michael [paladinmid@suddenlink.net]
Sent: Monday, June 15, 2015 5:05 PM
To: Mark Larson
Subject: FW: 1RP-3594, Paladin Energy Corp., State BT State BT "D" Well No. 003

From: Jones, Kellie, EMNRD [<mailto:Kellie.Jones@state.nm.us>]
Sent: Monday, June 15, 2015 11:30 AM
To: Mark Larson
Cc: paladinmid@suddenlink.net
Subject: RE: 1RP-3594, Paladin Energy Corp., State BT State BT "D" Well No. 003

Mark,

I am agreeable to the proposed action. Please submit the final C141 with the final report, the one submitted today will not be processed until then.

If you have any questions, please feel free to contact me.

Thank you,

Kellie Jones
Environmental Specialist, District 1
Oil Conservation Division, EMNRD
(575) 393-6161 ext. 111
575-370-3180 (emergency-cell)
E-Mail: kellie.jones@state.nm.us

OCD approval does not relieve the operator of liability should their operations fail to adequately investigate and remediate contamination that may pose a threat to ground water, surface water, human health or the environment. In addition, OCD approval does not relieve the operator of responsibility for compliance with any other federal, state, local laws and/or regulations.

Please note:

- The OCD is no longer granting "risk-based," or standard closure of events/RPs with remediation deferred to site abandonment/sale/closure. The RP will remain open until such time as historic contamination is addressed.
- Photographic documentation is stipulated for all events involving liquids.

If you have any questions or concerns, and for notification, please contact me.

From: Mark Larson [<mailto:Mark@laenvironmental.com>]
Sent: Wednesday, June 10, 2015 10:47 AM
To: Jones, Kellie, EMNRD
Cc: paladinmid@suddenlink.net
Subject: RE: 1RP-3594, Paladin Energy Corp., State BT State BT "D" Well No. 003

Kellie:

The following is in response to your approval for the Paladin Energy Corp. State BT "D" Well No. 003 spill (1RP-3594):

1RP-3594

1. Drop two additional soil borings

Response: Two borings (SB-2 and SB-3) were drilled on May 26, 2015. TPH was detected at 458.9 mg/Kg in sample SB-2, 1 foot bgs. The remaining samples from boring SB-2 (5, 10 and 15 feet) and boring SB-3 (1, 5, 10 and 15 feet) were below the RRAL (100 mg/Kg) or analytical method reporting limit (RL). Chloride decreased below 250 mg/Kg in samples from 25 feet. Table 2 presents the laboratory analytical data summary.

2. Show location of soil boring and composite samples on map

Response: Figure 3 presents the locations the composite (discrete) samples and boring locations.

3. Take ground water sample

Response: A groundwater samples was collected about 70 feet southeast (down gradient) from the spill, on April 21, 2015. Table 3 presents the analytical data summary which shows chloride at 221 mg/L and below the WQCC domestic drinking water standard (250 m/L). Figure 3 shows the groundwater sample location.

Proposed Action:

Paladin will install a 20 mil liner in the area shown on Figure 4. The liner will be installed in the bottom of the excavation at the same time a liner will be installed at the State BT "C" tank battery. The excavations will be filled with clean soil/caliche. A final report will be submitted to OCD upon completion of the work which will be photo documented. The final C-141 is attached.

Your approval of this request is greatly appreciated. Please contact me if you have questions.

Sincerely,

Mark J. Larson, P.G.
President/Sr. Project Manager
507 N. Marienfeld St., Suite 200
Midland, Texas 79701
Office – 432-687-0901
Cell – 432- 556-8656
Fax – 432-687-0456
mark@laenvironmental.com

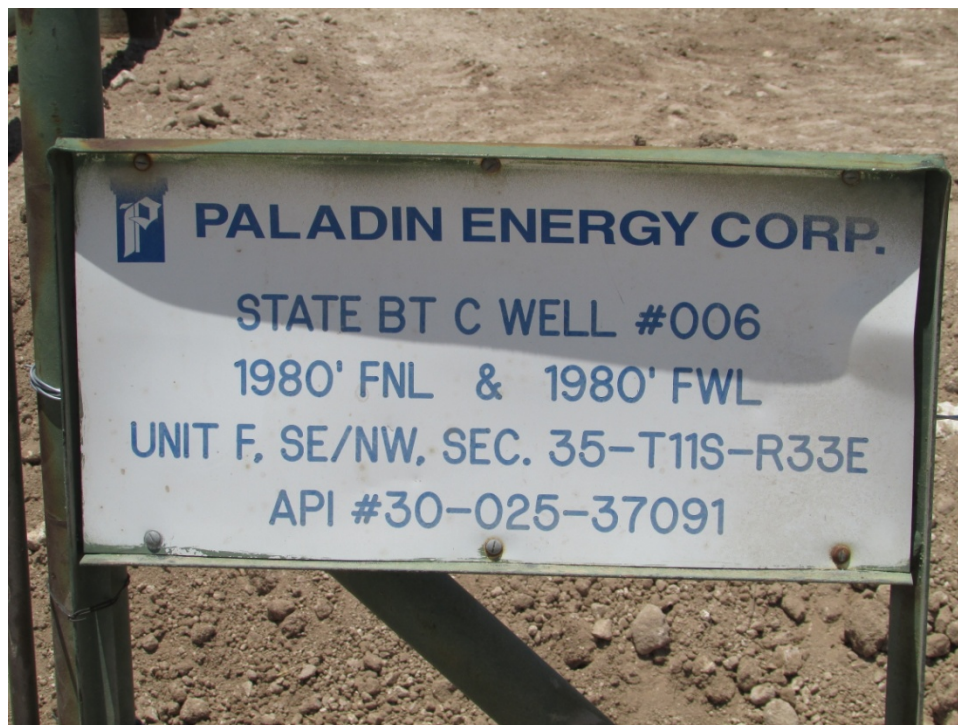


--

This message has been scanned for viruses and dangerous content by [MailScanner](#), and is believed to be clean.

APPENDIX B

Photographs



Facility Sign



Soil Remediation Southeast of Tanks Viewing West, June 22, 2015



Installing Liner Southeast of Tanks Viewing West, June 22, 2015



Completed Liner Viewing West, June 22, 2015



Completed Backfilling and Firewall Construction Viewing West, June 26, 2015



Completed Backfilling and Firewall Construction Viewing North, June 26, 2015



Soil Remediation South of Tanks Viewing West, June 22, 2015



Soil Remediation South and West of Tanks Viewing East, June 22, 2015



Completed Backfilling South and West of Tanks Viewing East, June 26, 2015



Soil Remediation West of Tanks Viewing East, June 22, 2015



Completed Backfilling West of Tanks Viewing East, June 26, 2015



Completed Backfilling West of Tanks Viewing East, June 26, 2015



Completed Backfilling North of Tanks Viewing West, June 26, 2015

APPENDIX C

Laboratory Reports

**PERMIAN BASIN
ENVIRONMENTAL LAB, LP
10014 SCR 1213
Midland, TX 79706**



Analytical Report

Prepared for:

Mark Larson
Larson & Associates, Inc.
P.O. Box 50685
Midland, TX 79710

Project: Paladiin/State BT "C" Battery

Project Number: 15-0130-01

Location:

Lab Order Number: 5D22006



NELAP/TCEQ # T104704156-13-3

Report Date: 05/06/15

Larson & Associates, Inc.
P.O. Box 50685
Midland TX, 79710

Project: Paladiin/State BT "C" Battery
Project Number: 15-0130-01
Project Manager: Mark Larson

Fax: (432) 687-0456

ANALYTICAL REPORT FOR SAMPLES

Sample ID	Laboratory ID	Matrix	Date Sampled	Date Received
SB-1 0'	5D22006-01	Soil	04/21/15 10:16	04-22-2015 10:21
SB-1 5'	5D22006-02	Soil	04/21/15 10:30	04-22-2015 10:21
SB-1 10'	5D22006-03	Soil	04/21/15 10:38	04-22-2015 10:21
SB-1 15'	5D22006-04	Soil	04/21/15 10:42	04-22-2015 10:21
SB-1 20'	5D22006-05	Soil	04/21/15 10:48	04-22-2015 10:21
SB-1 25'	5D22006-06	Soil	04/21/15 10:55	04-22-2015 10:21
SB-1 30'	5D22006-07	Soil	04/21/15 11:00	04-22-2015 10:21
SB-1 35'	5D22006-08	Soil	04/21/15 11:07	04-22-2015 10:21
SB-2 0'	5D22006-09	Soil	04/21/15 11:20	04-22-2015 10:21
SB-2 5'	5D22006-10	Soil	04/21/15 12:22	04-22-2015 10:21
SB-2 10'	5D22006-11	Soil	04/21/15 12:28	04-22-2015 10:21
SB-2 15'	5D22006-12	Soil	04/21/15 12:55	04-22-2015 10:21
SB-2 20'	5D22006-13	Soil	04/21/15 13:02	04-22-2015 10:21
SB-2 25'	5D22006-14	Soil	04/21/15 13:07	04-22-2015 10:21
SB-2 30'	5D22006-15	Soil	04/21/15 13:14	04-22-2015 10:21
SB-2 35'	5D22006-16	Soil	04/21/15 13:20	04-22-2015 10:21
SB-3 1'	5D22006-17	Soil	04/21/15 13:32	04-22-2015 10:21
SB-3 5'	5D22006-18	Soil	04/21/15 13:40	04-22-2015 10:21
SB-3 10'	5D22006-19	Soil	04/21/15 13:47	04-22-2015 10:21
SB-3 15'	5D22006-20	Soil	04/21/15 13:54	04-22-2015 10:21
SB-3 20'	5D22006-21	Soil	04/21/15 13:58	04-22-2015 10:21
SB-3 25'	5D22006-22	Soil	04/21/15 14:09	04-22-2015 10:21
SB-3 30'	5D22006-23	Soil	04/21/15 14:15	04-22-2015 10:21
SB-3 35'	5D22006-24	Soil	04/21/15 14:20	04-22-2015 10:21

Larson & Associates, Inc.
P.O. Box 50685
Midland TX, 79710

Project: Paladiin/State BT "C" Battery
Project Number: 15-0130-01
Project Manager: Mark Larson

Fax: (432) 687-0456

SB-1 0'
5D22006-01 (Soil)

Analyte	Result	Reporting Limit	Units	Dilution	Batch	Prepared	Analyzed	Method	Notes
---------	--------	--------------------	-------	----------	-------	----------	----------	--------	-------

Permian Basin Environmental Lab, L.P.

General Chemistry Parameters by EPA / Standard Methods

Chloride	420	1.08	mg/kg dry	1	P5D3006	04/29/15	04/30/15	EPA 300.0
% Moisture	7.0	0.1	%	1	P5D2705	04/27/15	04/27/15	% calculation

Total Petroleum Hydrocarbons C6-C35 by EPA Method 8015M

C6-C12	296	134	mg/kg dry	5	P5D2702	04/24/15	04/27/15	TPH 8015M
>C12-C28	9080	134	mg/kg dry	5	P5D2702	04/24/15	04/27/15	TPH 8015M
>C28-C35	833	134	mg/kg dry	5	P5D2702	04/24/15	04/27/15	TPH 8015M
<i>Surrogate: 1-Chlorooctane</i>		74.8 %	70-130		P5D2702	04/24/15	04/27/15	TPH 8015M
<i>Surrogate: o-Terphenyl</i>		82.3 %	70-130		P5D2702	04/24/15	04/27/15	TPH 8015M
Total Petroleum Hydrocarbon C6-C35	10200	134	mg/kg dry	5	[CALC]	04/24/15	04/27/15	calc

Larson & Associates, Inc.
P.O. Box 50685
Midland TX, 79710

Project: Paladiin/State BT "C" Battery
Project Number: 15-0130-01
Project Manager: Mark Larson

Fax: (432) 687-0456

SB-1 5'
5D22006-02 (Soil)

Analyte	Result	Reporting Limit	Units	Dilution	Batch	Prepared	Analyzed	Method	Notes
---------	--------	--------------------	-------	----------	-------	----------	----------	--------	-------

Permian Basin Environmental Lab, L.P.

Organics by GC

Benzene	ND	0.00111	mg/kg dry	1	P5D2704	04/24/15	04/24/15	EPA 8021B	
Toluene	0.0579	0.00222	mg/kg dry	1	P5D2704	04/24/15	04/24/15	EPA 8021B	
Ethylbenzene	0.0665	0.00111	mg/kg dry	1	P5D2704	04/24/15	04/24/15	EPA 8021B	
Xylene (p/m)	0.324	0.00222	mg/kg dry	1	P5D2704	04/24/15	04/24/15	EPA 8021B	
Xylene (o)	0.105	0.00111	mg/kg dry	1	P5D2704	04/24/15	04/24/15	EPA 8021B	
<i>Surrogate: 1,4-Difluorobenzene</i>		83.2 %	75-125		P5D2704	04/24/15	04/24/15	EPA 8021B	
<i>Surrogate: 4-Bromofluorobenzene</i>		113 %	75-125		P5D2704	04/24/15	04/24/15	EPA 8021B	

General Chemistry Parameters by EPA / Standard Methods

Chloride	397	1.11	mg/kg dry	1	P5D3006	04/29/15	04/30/15	EPA 300.0	
% Moisture	10.0	0.1	%	1	P5D2705	04/27/15	04/27/15	% calculation	

Total Petroleum Hydrocarbons C6-C35 by EPA Method 8015M

C6-C12	493	27.8	mg/kg dry	1	P5D2702	04/24/15	04/27/15	TPH 8015M	
>C12-C28	2780	27.8	mg/kg dry	1	P5D2702	04/24/15	04/27/15	TPH 8015M	
>C28-C35	305	27.8	mg/kg dry	1	P5D2702	04/24/15	04/27/15	TPH 8015M	
<i>Surrogate: 1-Chlorooctane</i>		105 %	70-130		P5D2702	04/24/15	04/27/15	TPH 8015M	
<i>Surrogate: o-Terphenyl</i>		88.9 %	70-130		P5D2702	04/24/15	04/27/15	TPH 8015M	
Total Petroleum Hydrocarbon C6-C35	3580	27.8	mg/kg dry	1	[CALC]	04/24/15	04/27/15	calc	

Larson & Associates, Inc.
P.O. Box 50685
Midland TX, 79710

Project: Paladiin/State BT "C" Battery
Project Number: 15-0130-01
Project Manager: Mark Larson

Fax: (432) 687-0456

SB-1 10'
5D22006-03 (Soil)

Analyte	Result	Reporting Limit	Units	Dilution	Batch	Prepared	Analyzed	Method	Notes
---------	--------	--------------------	-------	----------	-------	----------	----------	--------	-------

Permian Basin Environmental Lab, L.P.

General Chemistry Parameters by EPA / Standard Methods

Chloride	280	1.10	mg/kg dry	1	P5D3006	04/29/15	04/30/15	EPA 300.0
% Moisture	9.0	0.1	%	1	P5D2705	04/27/15	04/27/15	% calculation

Total Petroleum Hydrocarbons C6-C35 by EPA Method 8015M

C6-C12	ND	27.5	mg/kg dry	1	P5D2702	04/24/15	04/27/15	TPH 8015M
>C12-C28	35.1	27.5	mg/kg dry	1	P5D2702	04/24/15	04/27/15	TPH 8015M
>C28-C35	ND	27.5	mg/kg dry	1	P5D2702	04/24/15	04/27/15	TPH 8015M
Surrogate: 1-Chlorooctane		75.1 %	70-130		P5D2702	04/24/15	04/27/15	TPH 8015M
Surrogate: o-Terphenyl		89.0 %	70-130		P5D2702	04/24/15	04/27/15	TPH 8015M
Total Petroleum Hydrocarbon C6-C35	35.1	27.5	mg/kg dry	1	[CALC]	04/24/15	04/27/15	calc

Larson & Associates, Inc.
P.O. Box 50685
Midland TX, 79710

Project: Paladiin/State BT "C" Battery
Project Number: 15-0130-01
Project Manager: Mark Larson

Fax: (432) 687-0456

SB-1 15'
5D22006-04 (Soil)

Analyte	Result	Reporting Limit	Units	Dilution	Batch	Prepared	Analyzed	Method	Notes
---------	--------	--------------------	-------	----------	-------	----------	----------	--------	-------

Permian Basin Environmental Lab, L.P.

General Chemistry Parameters by EPA / Standard Methods

Chloride	122	1.05	mg/kg dry	1	P5D3006	04/29/15	04/30/15	EPA 300.0
% Moisture	5.0	0.1	%	1	P5D2705	04/27/15	04/27/15	% calculation

Total Petroleum Hydrocarbons C6-C35 by EPA Method 8015M

C6-C12	ND	26.3	mg/kg dry	1	P5D2702	04/24/15	04/27/15	TPH 8015M
>C12-C28	ND	26.3	mg/kg dry	1	P5D2702	04/24/15	04/27/15	TPH 8015M
>C28-C35	ND	26.3	mg/kg dry	1	P5D2702	04/24/15	04/27/15	TPH 8015M
Surrogate: 1-Chlorooctane		74.5 %	70-130		P5D2702	04/24/15	04/27/15	TPH 8015M
Surrogate: o-Terphenyl		87.8 %	70-130		P5D2702	04/24/15	04/27/15	TPH 8015M
Total Petroleum Hydrocarbon C6-C35	ND	26.3	mg/kg dry	1	[CALC]	04/24/15	04/27/15	calc

Larson & Associates, Inc.
P.O. Box 50685
Midland TX, 79710

Project: Paladiin/State BT "C" Battery
Project Number: 15-0130-01
Project Manager: Mark Larson

Fax: (432) 687-0456

SB-1 20'
5D22006-05 (Soil)

Analyte	Result	Reporting Limit	Units	Dilution	Batch	Prepared	Analyzed	Method	Notes
---------	--------	--------------------	-------	----------	-------	----------	----------	--------	-------

Permian Basin Environmental Lab, L.P.

General Chemistry Parameters by EPA / Standard Methods

Chloride	74.9	1.06	mg/kg dry	1	P5E0503	04/30/15	05/05/15	EPA 300.0	
% Moisture	6.0	0.1	%	1	P5D2705	04/27/15	04/27/15	% calculation	

Total Petroleum Hydrocarbons C6-C35 by EPA Method 8015M

C6-C12	ND	26.6	mg/kg dry	1	P5D2702	04/24/15	04/27/15	TPH 8015M	
>C12-C28	ND	26.6	mg/kg dry	1	P5D2702	04/24/15	04/27/15	TPH 8015M	
>C28-C35	ND	26.6	mg/kg dry	1	P5D2702	04/24/15	04/27/15	TPH 8015M	
Surrogate: 1-Chlorooctane		67.6 %	70-130		P5D2702	04/24/15	04/27/15	TPH 8015M	S-GC
Surrogate: o-Terphenyl		78.3 %	70-130		P5D2702	04/24/15	04/27/15	TPH 8015M	
Total Petroleum Hydrocarbon C6-C35	ND	26.6	mg/kg dry	1	[CALC]	04/24/15	04/27/15	calc	

Larson & Associates, Inc.
P.O. Box 50685
Midland TX, 79710

Project: Paladiin/State BT "C" Battery
Project Number: 15-0130-01
Project Manager: Mark Larson

Fax: (432) 687-0456

SB-1 25'
5D22006-06 (Soil)

Analyte	Result	Reporting Limit	Units	Dilution	Batch	Prepared	Analyzed	Method	Notes
---------	--------	--------------------	-------	----------	-------	----------	----------	--------	-------

Permian Basin Environmental Lab, L.P.

General Chemistry Parameters by EPA / Standard Methods

Chloride	67.4	1.08	mg/kg dry	1	P5E0503	04/30/15	05/05/15	EPA 300.0
% Moisture	7.0	0.1	%	1	P5D2705	04/27/15	04/27/15	% calculation

Total Petroleum Hydrocarbons C6-C35 by EPA Method 8015M

C6-C12	ND	26.9	mg/kg dry	1	P5D2702	04/24/15	04/27/15	TPH 8015M
>C12-C28	35.0	26.9	mg/kg dry	1	P5D2702	04/24/15	04/27/15	TPH 8015M
>C28-C35	ND	26.9	mg/kg dry	1	P5D2702	04/24/15	04/27/15	TPH 8015M
<i>Surrogate: 1-Chlorooctane</i>		77.2 %	70-130		P5D2702	04/24/15	04/27/15	TPH 8015M
<i>Surrogate: o-Terphenyl</i>		92.0 %	70-130		P5D2702	04/24/15	04/27/15	TPH 8015M
Total Petroleum Hydrocarbon C6-C35	35.0	26.9	mg/kg dry	1	[CALC]	04/24/15	04/27/15	calc

Larson & Associates, Inc.
P.O. Box 50685
Midland TX, 79710

Project: Paladiin/State BT "C" Battery
Project Number: 15-0130-01
Project Manager: Mark Larson

Fax: (432) 687-0456

SB-1 30'
5D22006-07 (Soil)

Analyte	Result	Reporting Limit	Units	Dilution	Batch	Prepared	Analyzed	Method	Notes
---------	--------	--------------------	-------	----------	-------	----------	----------	--------	-------

Permian Basin Environmental Lab, L.P.

General Chemistry Parameters by EPA / Standard Methods

Chloride	43.5	1.41	mg/kg dry	1	P5E0503	04/30/15	05/05/15	EPA 300.0	
% Moisture	29.0	0.1	%	1	P5D2705	04/27/15	04/27/15	% calculation	

Larson & Associates, Inc.
P.O. Box 50685
Midland TX, 79710

Project: Paladiin/State BT "C" Battery
Project Number: 15-0130-01
Project Manager: Mark Larson

Fax: (432) 687-0456

SB-1 35'
5D22006-08 (Soil)

Analyte	Result	Reporting Limit	Units	Dilution	Batch	Prepared	Analyzed	Method	Notes
---------	--------	--------------------	-------	----------	-------	----------	----------	--------	-------

Permian Basin Environmental Lab, L.P.

General Chemistry Parameters by EPA / Standard Methods

Chloride	103	1.08	mg/kg dry	1	P5E0503	04/30/15	05/05/15	EPA 300.0	
% Moisture	7.0	0.1	%	1	P5D2705	04/27/15	04/27/15	% calculation	

Larson & Associates, Inc.
P.O. Box 50685
Midland TX, 79710

Project: Paladiin/State BT "C" Battery
Project Number: 15-0130-01
Project Manager: Mark Larson

Fax: (432) 687-0456

SB-2 0'

5D22006-09 (Soil)

Analyte	Result	Reporting Limit	Units	Dilution	Batch	Prepared	Analyzed	Method	Notes
---------	--------	--------------------	-------	----------	-------	----------	----------	--------	-------

Permian Basin Environmental Lab, L.P.

General Chemistry Parameters by EPA / Standard Methods

Chloride	125	1.35	mg/kg dry	1	P5E0503	04/30/15	05/05/15	EPA 300.0
% Moisture	26.0	0.1	%	1	P5D2705	04/27/15	04/27/15	% calculation

Total Petroleum Hydrocarbons C6-C35 by EPA Method 8015M

C6-C12	72.5	33.8	mg/kg dry	1	P5D2702	04/24/15	04/27/15	TPH 8015M
>C12-C28	1870	33.8	mg/kg dry	1	P5D2702	04/24/15	04/27/15	TPH 8015M
>C28-C35	106	33.8	mg/kg dry	1	P5D2702	04/24/15	04/27/15	TPH 8015M
Surrogate: 1-Chlorooctane		83.5 %	70-130		P5D2702	04/24/15	04/27/15	TPH 8015M
Surrogate: o-Terphenyl		100 %	70-130		P5D2702	04/24/15	04/27/15	TPH 8015M
Total Petroleum Hydrocarbon C6-C35	2050	33.8	mg/kg dry	1	[CALC]	04/24/15	04/27/15	calc

Larson & Associates, Inc.
P.O. Box 50685
Midland TX, 79710

Project: Paladiin/State BT "C" Battery
Project Number: 15-0130-01
Project Manager: Mark Larson

Fax: (432) 687-0456

SB-2 5'
5D22006-10 (Soil)

Analyte	Result	Reporting Limit	Units	Dilution	Batch	Prepared	Analyzed	Method	Notes
---------	--------	--------------------	-------	----------	-------	----------	----------	--------	-------

Permian Basin Environmental Lab, L.P.

Organics by GC

Benzene	ND	0.00114	mg/kg dry	1	P5D2704	04/24/15	04/24/15	EPA 8021B	
Toluene	0.0134	0.00227	mg/kg dry	1	P5D2704	04/24/15	04/24/15	EPA 8021B	
Ethylbenzene	0.00333	0.00114	mg/kg dry	1	P5D2704	04/24/15	04/24/15	EPA 8021B	
Xylene (p/m)	0.0245	0.00227	mg/kg dry	1	P5D2704	04/24/15	04/24/15	EPA 8021B	
Xylene (o)	0.00432	0.00114	mg/kg dry	1	P5D2704	04/24/15	04/24/15	EPA 8021B	
<i>Surrogate: 1,4-Difluorobenzene</i>		<i>103 %</i>	<i>75-125</i>		<i>P5D2704</i>	<i>04/24/15</i>	<i>04/24/15</i>	<i>EPA 8021B</i>	
<i>Surrogate: 4-Bromofluorobenzene</i>		<i>92.7 %</i>	<i>75-125</i>		<i>P5D2704</i>	<i>04/24/15</i>	<i>04/24/15</i>	<i>EPA 8021B</i>	

General Chemistry Parameters by EPA / Standard Methods

Chloride	480	1.14	mg/kg dry	1	P5E0503	04/30/15	05/05/15	EPA 300.0	
% Moisture	12.0	0.1	%	1	P5D2705	04/27/15	04/27/15	% calculation	

Total Petroleum Hydrocarbons C6-C35 by EPA Method 8015M

C6-C12	ND	28.4	mg/kg dry	1	P5D2702	04/24/15	04/27/15	TPH 8015M	
>C12-C28	98.6	28.4	mg/kg dry	1	P5D2702	04/24/15	04/27/15	TPH 8015M	
>C28-C35	ND	28.4	mg/kg dry	1	P5D2702	04/24/15	04/27/15	TPH 8015M	
<i>Surrogate: 1-Chlorooctane</i>		<i>82.2 %</i>	<i>70-130</i>		<i>P5D2702</i>	<i>04/24/15</i>	<i>04/27/15</i>	<i>TPH 8015M</i>	
<i>Surrogate: o-Terphenyl</i>		<i>96.8 %</i>	<i>70-130</i>		<i>P5D2702</i>	<i>04/24/15</i>	<i>04/27/15</i>	<i>TPH 8015M</i>	
Total Petroleum Hydrocarbon C6-C35	98.6	28.4	mg/kg dry	1	[CALC]	04/24/15	04/27/15	calc	

Larson & Associates, Inc.
P.O. Box 50685
Midland TX, 79710

Project: Paladiin/State BT "C" Battery
Project Number: 15-0130-01
Project Manager: Mark Larson

Fax: (432) 687-0456

SB-2 10'
5D22006-11 (Soil)

Analyte	Result	Reporting Limit	Units	Dilution	Batch	Prepared	Analyzed	Method	Notes
---------	--------	--------------------	-------	----------	-------	----------	----------	--------	-------

Permian Basin Environmental Lab, L.P.

General Chemistry Parameters by EPA / Standard Methods

Chloride	83.3	1.02	mg/kg dry	1	P5E0503	04/30/15	05/05/15	EPA 300.0	
% Moisture	2.0	0.1	%	1	P5D2705	04/27/15	04/27/15	% calculation	

Total Petroleum Hydrocarbons C6-C35 by EPA Method 8015M

C6-C12	43.5	25.5	mg/kg dry	1	P5D2702	04/24/15	04/27/15	TPH 8015M	
>C12-C28	399	25.5	mg/kg dry	1	P5D2702	04/24/15	04/27/15	TPH 8015M	
>C28-C35	ND	25.5	mg/kg dry	1	P5D2702	04/24/15	04/27/15	TPH 8015M	
Surrogate: 1-Chlorooctane		78.1 %	70-130		P5D2702	04/24/15	04/27/15	TPH 8015M	
Surrogate: o-Terphenyl		92.3 %	70-130		P5D2702	04/24/15	04/27/15	TPH 8015M	
Total Petroleum Hydrocarbon C6-C35	443	25.5	mg/kg dry	1	[CALC]	04/24/15	04/27/15	calc	

Larson & Associates, Inc.
P.O. Box 50685
Midland TX, 79710

Project: Paladiin/State BT "C" Battery
Project Number: 15-0130-01
Project Manager: Mark Larson

Fax: (432) 687-0456

SB-2 15'
5D22006-12 (Soil)

Analyte	Result	Reporting Limit	Units	Dilution	Batch	Prepared	Analyzed	Method	Notes
---------	--------	--------------------	-------	----------	-------	----------	----------	--------	-------

Permian Basin Environmental Lab, L.P.

General Chemistry Parameters by EPA / Standard Methods

Chloride	6.55	1.19	mg/kg dry	1	P5E0503	04/30/15	05/05/15	EPA 300.0
% Moisture	16.0	0.1	%	1	P5D2705	04/27/15	04/27/15	% calculation

Total Petroleum Hydrocarbons C6-C35 by EPA Method 8015M

C6-C12	ND	29.8	mg/kg dry	1	P5D2702	04/24/15	04/27/15	TPH 8015M
>C12-C28	ND	29.8	mg/kg dry	1	P5D2702	04/24/15	04/27/15	TPH 8015M
>C28-C35	ND	29.8	mg/kg dry	1	P5D2702	04/24/15	04/27/15	TPH 8015M
Surrogate: 1-Chlorooctane		72.4 %	70-130		P5D2702	04/24/15	04/27/15	TPH 8015M
Surrogate: o-Terphenyl		85.9 %	70-130		P5D2702	04/24/15	04/27/15	TPH 8015M
Total Petroleum Hydrocarbon C6-C35	ND	29.8	mg/kg dry	1	[CALC]	04/24/15	04/27/15	calc

Larson & Associates, Inc.
P.O. Box 50685
Midland TX, 79710

Project: Paladiin/State BT "C" Battery
Project Number: 15-0130-01
Project Manager: Mark Larson

Fax: (432) 687-0456

SB-2 20'
5D22006-13 (Soil)

Analyte	Result	Reporting Limit	Units	Dilution	Batch	Prepared	Analyzed	Method	Notes
---------	--------	--------------------	-------	----------	-------	----------	----------	--------	-------

Permian Basin Environmental Lab, L.P.

General Chemistry Parameters by EPA / Standard Methods

Chloride	72.2	1.09	mg/kg dry	1	P5E0503	04/30/15	05/05/15	EPA 300.0
% Moisture	8.0	0.1	%	1	P5D2705	04/27/15	04/27/15	% calculation

Total Petroleum Hydrocarbons C6-C35 by EPA Method 8015M

C6-C12	ND	27.2	mg/kg dry	1	P5D3003	04/27/15	04/27/15	TPH 8015M
>C12-C28	ND	27.2	mg/kg dry	1	P5D3003	04/27/15	04/27/15	TPH 8015M
>C28-C35	ND	27.2	mg/kg dry	1	P5D3003	04/27/15	04/27/15	TPH 8015M
Surrogate: 1-Chlorooctane		70.6 %	70-130		P5D3003	04/27/15	04/27/15	TPH 8015M
Surrogate: o-Terphenyl		83.3 %	70-130		P5D3003	04/27/15	04/27/15	TPH 8015M
Total Petroleum Hydrocarbon C6-C35	ND	27.2	mg/kg dry	1	[CALC]	04/27/15	04/27/15	calc

Larson & Associates, Inc.
P.O. Box 50685
Midland TX, 79710

Project: Paladiin/State BT "C" Battery
Project Number: 15-0130-01
Project Manager: Mark Larson

Fax: (432) 687-0456

SB-2 25'
5D22006-14 (Soil)

Analyte	Result	Reporting Limit	Units	Dilution	Batch	Prepared	Analyzed	Method	Notes
---------	--------	--------------------	-------	----------	-------	----------	----------	--------	-------

Permian Basin Environmental Lab, L.P.

General Chemistry Parameters by EPA / Standard Methods

Chloride	4.54	1.09	mg/kg dry	1	P5E0503	04/30/15	05/05/15	EPA 300.0	
% Moisture	8.0	0.1	%	1	P5D2705	04/27/15	04/27/15	% calculation	

Larson & Associates, Inc.
P.O. Box 50685
Midland TX, 79710

Project: Paladiin/State BT "C" Battery
Project Number: 15-0130-01
Project Manager: Mark Larson

Fax: (432) 687-0456

SB-2 30'
5D22006-15 (Soil)

Analyte	Result	Reporting Limit	Units	Dilution	Batch	Prepared	Analyzed	Method	Notes
---------	--------	--------------------	-------	----------	-------	----------	----------	--------	-------

Permian Basin Environmental Lab, L.P.

General Chemistry Parameters by EPA / Standard Methods

Chloride	440	1.18	mg/kg dry	1	P5E0503	04/30/15	05/05/15	EPA 300.0	
% Moisture	15.0	0.1	%	1	P5D2705	04/27/15	04/27/15	% calculation	

Larson & Associates, Inc.
P.O. Box 50685
Midland TX, 79710

Project: Paladiin/State BT "C" Battery
Project Number: 15-0130-01
Project Manager: Mark Larson

Fax: (432) 687-0456

SB-2 35'
5D22006-16 (Soil)

Analyte	Result	Reporting Limit	Units	Dilution	Batch	Prepared	Analyzed	Method	Notes
---------	--------	--------------------	-------	----------	-------	----------	----------	--------	-------

Permian Basin Environmental Lab, L.P.

General Chemistry Parameters by EPA / Standard Methods

Chloride	47.7	1.08	mg/kg dry	1	P5E0503	04/30/15	05/05/15	EPA 300.0	
% Moisture	7.0	0.1	%	1	P5D2705	04/27/15	04/27/15	% calculation	

Larson & Associates, Inc.
P.O. Box 50685
Midland TX, 79710

Project: Paladiin/State BT "C" Battery
Project Number: 15-0130-01
Project Manager: Mark Larson

Fax: (432) 687-0456

SB-3 1'
5D22006-17 (Soil)

Analyte	Result	Reporting Limit	Units	Dilution	Batch	Prepared	Analyzed	Method	Notes
---------	--------	--------------------	-------	----------	-------	----------	----------	--------	-------

Permian Basin Environmental Lab, L.P.

General Chemistry Parameters by EPA / Standard Methods

Chloride	363	1.28	mg/kg dry	1	P5E0503	04/30/15	05/05/15	EPA 300.0	
% Moisture	22.0	0.1	%	1	P5D2705	04/27/15	04/27/15	% calculation	

Total Petroleum Hydrocarbons C6-C35 by EPA Method 8015M

C6-C12	ND	32.1	mg/kg dry	1	P5D3003	04/27/15	04/27/15	TPH 8015M	
>C12-C28	685	32.1	mg/kg dry	1	P5D3003	04/27/15	04/27/15	TPH 8015M	
>C28-C35	70.5	32.1	mg/kg dry	1	P5D3003	04/27/15	04/27/15	TPH 8015M	
Surrogate: 1-Chlorooctane		63.9 %	70-130		P5D3003	04/27/15	04/27/15	TPH 8015M	S-GC
Surrogate: o-Terphenyl		86.6 %	70-130		P5D3003	04/27/15	04/27/15	TPH 8015M	
Total Petroleum Hydrocarbon C6-C35	756	32.1	mg/kg dry	1	[CALC]	04/27/15	04/27/15	calc	

Larson & Associates, Inc.
P.O. Box 50685
Midland TX, 79710

Project: Paladiin/State BT "C" Battery
Project Number: 15-0130-01
Project Manager: Mark Larson

Fax: (432) 687-0456

SB-3 5'
5D22006-18 (Soil)

Analyte	Result	Reporting Limit	Units	Dilution	Batch	Prepared	Analyzed	Method	Notes
---------	--------	--------------------	-------	----------	-------	----------	----------	--------	-------

Permian Basin Environmental Lab, L.P.

Organics by GC

Benzene	ND	0.00130	mg/kg dry	1	P5D2704	04/24/15	04/24/15	EPA 8021B	
Toluene	0.0240	0.00260	mg/kg dry	1	P5D2704	04/24/15	04/24/15	EPA 8021B	
Ethylbenzene	0.0483	0.00130	mg/kg dry	1	P5D2704	04/24/15	04/24/15	EPA 8021B	
Xylene (p/m)	0.276	0.00260	mg/kg dry	1	P5D2704	04/24/15	04/24/15	EPA 8021B	
Xylene (o)	0.0419	0.00130	mg/kg dry	1	P5D2704	04/24/15	04/24/15	EPA 8021B	
<i>Surrogate: 1,4-Difluorobenzene</i>		<i>80.8 %</i>	<i>75-125</i>		<i>P5D2704</i>	<i>04/24/15</i>	<i>04/24/15</i>	<i>EPA 8021B</i>	
<i>Surrogate: 4-Bromofluorobenzene</i>		<i>101 %</i>	<i>75-125</i>		<i>P5D2704</i>	<i>04/24/15</i>	<i>04/24/15</i>	<i>EPA 8021B</i>	

General Chemistry Parameters by EPA / Standard Methods

Chloride	8.78	1.30	mg/kg dry	1	P5E0503	04/30/15	05/05/15	EPA 300.0	
% Moisture	23.0	0.1	%	1	P5D2705	04/27/15	04/27/15	% calculation	

Total Petroleum Hydrocarbons C6-C35 by EPA Method 8015M

C6-C12	137	32.5	mg/kg dry	1	P5D3003	04/27/15	04/27/15	TPH 8015M	
>C12-C28	683	32.5	mg/kg dry	1	P5D3003	04/27/15	04/27/15	TPH 8015M	
>C28-C35	39.4	32.5	mg/kg dry	1	P5D3003	04/27/15	04/27/15	TPH 8015M	
<i>Surrogate: 1-Chlorooctane</i>		<i>79.0 %</i>	<i>70-130</i>		<i>P5D3003</i>	<i>04/27/15</i>	<i>04/27/15</i>	<i>TPH 8015M</i>	
<i>Surrogate: o-Terphenyl</i>		<i>88.8 %</i>	<i>70-130</i>		<i>P5D3003</i>	<i>04/27/15</i>	<i>04/27/15</i>	<i>TPH 8015M</i>	
Total Petroleum Hydrocarbon C6-C35	860	32.5	mg/kg dry	1	[CALC]	04/27/15	04/27/15	calc	

Larson & Associates, Inc.
P.O. Box 50685
Midland TX, 79710

Project: Paladiin/State BT "C" Battery
Project Number: 15-0130-01
Project Manager: Mark Larson

Fax: (432) 687-0456

SB-3 10'
5D22006-19 (Soil)

Analyte	Result	Reporting Limit	Units	Dilution	Batch	Prepared	Analyzed	Method	Notes
---------	--------	--------------------	-------	----------	-------	----------	----------	--------	-------

Permian Basin Environmental Lab, L.P.

General Chemistry Parameters by EPA / Standard Methods

Chloride	52.4	1.10	mg/kg dry	1	P5E0503	04/30/15	05/05/15	EPA 300.0	
% Moisture	9.0	0.1	%	1	P5D2705	04/27/15	04/27/15	% calculation	

Total Petroleum Hydrocarbons C6-C35 by EPA Method 8015M

C6-C12	ND	27.5	mg/kg dry	1	P5D3003	04/27/15	04/27/15	TPH 8015M	
> C12-C28	177	27.5	mg/kg dry	1	P5D3003	04/27/15	04/27/15	TPH 8015M	
>C28-C35	ND	27.5	mg/kg dry	1	P5D3003	04/27/15	04/27/15	TPH 8015M	
Surrogate: 1-Chlorooctane		68.1 %	70-130		P5D3003	04/27/15	04/27/15	TPH 8015M	S-GC
Surrogate: o-Terphenyl		80.5 %	70-130		P5D3003	04/27/15	04/27/15	TPH 8015M	
Total Petroleum Hydrocarbon C6-C35	177	27.5	mg/kg dry	1	[CALC]	04/27/15	04/27/15	calc	

Larson & Associates, Inc.
P.O. Box 50685
Midland TX, 79710

Project: Paladiin/State BT "C" Battery
Project Number: 15-0130-01
Project Manager: Mark Larson

Fax: (432) 687-0456

SB-3 15'
5D22006-20 (Soil)

Analyte	Result	Reporting Limit	Units	Dilution	Batch	Prepared	Analyzed	Method	Notes
---------	--------	--------------------	-------	----------	-------	----------	----------	--------	-------

Permian Basin Environmental Lab, L.P.

General Chemistry Parameters by EPA / Standard Methods

Chloride	44.5	1.04	mg/kg dry	1	P5E0503	04/30/15	05/05/15	EPA 300.0
% Moisture	4.0	0.1	%	1	P5D2705	04/27/15	04/27/15	% calculation

Total Petroleum Hydrocarbons C6-C35 by EPA Method 8015M

C6-C12	28.7	26.0	mg/kg dry	1	P5D3003	04/27/15	04/27/15	TPH 8015M
>C12-C28	270	26.0	mg/kg dry	1	P5D3003	04/27/15	04/27/15	TPH 8015M
>C28-C35	ND	26.0	mg/kg dry	1	P5D3003	04/27/15	04/27/15	TPH 8015M
<i>Surrogate: 1-Chlorooctane</i>		74.4 %	70-130		P5D3003	04/27/15	04/27/15	TPH 8015M
<i>Surrogate: o-Terphenyl</i>		87.5 %	70-130		P5D3003	04/27/15	04/27/15	TPH 8015M
Total Petroleum Hydrocarbon C6-C35	298	26.0	mg/kg dry	1	[CALC]	04/27/15	04/27/15	calc

Larson & Associates, Inc.
P.O. Box 50685
Midland TX, 79710

Project: Paladiin/State BT "C" Battery
Project Number: 15-0130-01
Project Manager: Mark Larson

Fax: (432) 687-0456

SB-3 20'
5D22006-21 (Soil)

Analyte	Result	Reporting Limit	Units	Dilution	Batch	Prepared	Analyzed	Method	Notes
---------	--------	--------------------	-------	----------	-------	----------	----------	--------	-------

Permian Basin Environmental Lab, L.P.

General Chemistry Parameters by EPA / Standard Methods

Chloride	ND	1.22	mg/kg dry	1	P5E0503	04/30/15	05/05/15	EPA 300.0
% Moisture	18.0	0.1	%	1	P5D2705	04/27/15	04/27/15	% calculation

Total Petroleum Hydrocarbons C6-C35 by EPA Method 8015M

C6-C12	ND	30.5	mg/kg dry	1	P5D3003	04/27/15	04/27/15	TPH 8015M
>C12-C28	ND	30.5	mg/kg dry	1	P5D3003	04/27/15	04/27/15	TPH 8015M
>C28-C35	ND	30.5	mg/kg dry	1	P5D3003	04/27/15	04/27/15	TPH 8015M
Surrogate: 1-Chlorooctane		70.2 %	70-130		P5D3003	04/27/15	04/27/15	TPH 8015M
Surrogate: o-Terphenyl		82.7 %	70-130		P5D3003	04/27/15	04/27/15	TPH 8015M
Total Petroleum Hydrocarbon C6-C35	ND	30.5	mg/kg dry	1	[CALC]	04/27/15	04/27/15	calc

Larson & Associates, Inc.
P.O. Box 50685
Midland TX, 79710

Project: Paladiin/State BT "C" Battery
Project Number: 15-0130-01
Project Manager: Mark Larson

Fax: (432) 687-0456

SB-3 25'
5D22006-22 (Soil)

Analyte	Result	Reporting Limit	Units	Dilution	Batch	Prepared	Analyzed	Method	Notes
---------	--------	--------------------	-------	----------	-------	----------	----------	--------	-------

Permian Basin Environmental Lab, L.P.

General Chemistry Parameters by EPA / Standard Methods

Chloride	65.4	1.08	mg/kg dry	1	P5E0503	04/30/15	05/05/15	EPA 300.0	
% Moisture	7.0	0.1	%	1	P5D2705	04/27/15	04/27/15	% calculation	

Larson & Associates, Inc.
P.O. Box 50685
Midland TX, 79710

Project: Paladiin/State BT "C" Battery
Project Number: 15-0130-01
Project Manager: Mark Larson

Fax: (432) 687-0456

SB-3 30'
5D22006-23 (Soil)

Analyte	Result	Reporting Limit	Units	Dilution	Batch	Prepared	Analyzed	Method	Notes
---------	--------	--------------------	-------	----------	-------	----------	----------	--------	-------

Permian Basin Environmental Lab, L.P.

General Chemistry Parameters by EPA / Standard Methods

Chloride	82.3	1.08	mg/kg dry	1	P5E0503	04/30/15	05/05/15	EPA 300.0	
% Moisture	7.0	0.1	%	1	P5D2705	04/27/15	04/27/15	% calculation	

Larson & Associates, Inc.
P.O. Box 50685
Midland TX, 79710

Project: Paladiin/State BT "C" Battery
Project Number: 15-0130-01
Project Manager: Mark Larson

Fax: (432) 687-0456

SB-3 35'
5D22006-24 (Soil)

Analyte	Result	Reporting Limit	Units	Dilution	Batch	Prepared	Analyzed	Method	Notes
---------	--------	--------------------	-------	----------	-------	----------	----------	--------	-------

Permian Basin Environmental Lab, L.P.

General Chemistry Parameters by EPA / Standard Methods

Chloride	96.1	1.10	mg/kg dry	1	P5E0503	04/30/15	05/05/15	EPA 300.0	
% Moisture	9.0	0.1	%	1	P5D2705	04/27/15	04/27/15	% calculation	

Larson & Associates, Inc.
P.O. Box 50685
Midland TX, 79710

Project: Paladiin/State BT "C" Battery
Project Number: 15-0130-01
Project Manager: Mark Larson

Fax: (432) 687-0456

Organics by GC - Quality Control
Permian Basin Environmental Lab, L.P.

Analyte	Result	Reporting Limit	Units	Spike Level	Source Result	%REC	%REC Limits	RPD	RPD Limit	Notes
---------	--------	--------------------	-------	----------------	------------------	------	----------------	-----	--------------	-------

Batch P5D2704 - General Preparation (GC)

Blank (P5D2704-BLK1)

Prepared & Analyzed: 04/24/15

Benzene	ND	0.00100	mg/kg wet							
Toluene	ND	0.00200	"							
Ethylbenzene	ND	0.00100	"							
Xylene (p/m)	ND	0.00200	"							
Xylene (o)	ND	0.00100	"							
Surrogate: 1,4-Difluorobenzene	0.0503		"	0.0600		83.8	75-125			
Surrogate: 4-Bromofluorobenzene	0.0663		"	0.0600		110	75-125			

LCS (P5D2704-BS1)

Prepared & Analyzed: 04/24/15

Benzene	0.100	0.00100	mg/kg wet	0.100		100	70-130			
Toluene	0.111	0.00200	"	0.100		111	70-130			
Ethylbenzene	0.117	0.00100	"	0.100		117	70-130			
Xylene (p/m)	0.231	0.00200	"	0.200		115	70-130			
Xylene (o)	0.110	0.00100	"	0.100		110	70-130			
Surrogate: 1,4-Difluorobenzene	0.0595		"	0.0600		99.2	75-125			
Surrogate: 4-Bromofluorobenzene	0.0680		"	0.0600		113	75-125			

LCS Dup (P5D2704-BSD1)

Prepared & Analyzed: 04/24/15

Benzene	0.0986	0.00100	mg/kg wet	0.100		98.6	70-130	1.60	20	
Toluene	0.111	0.00200	"	0.100		111	70-130	0.0720	20	
Ethylbenzene	0.115	0.00100	"	0.100		115	70-130	1.63	20	
Xylene (p/m)	0.224	0.00200	"	0.200		112	70-130	2.83	20	
Xylene (o)	0.109	0.00100	"	0.100		109	70-130	1.57	20	
Surrogate: 1,4-Difluorobenzene	0.0613		"	0.0600		102	75-125			
Surrogate: 4-Bromofluorobenzene	0.0673		"	0.0600		112	75-125			

Larson & Associates, Inc.
P.O. Box 50685
Midland TX, 79710

Project: Paladiin/State BT "C" Battery
Project Number: 15-0130-01
Project Manager: Mark Larson

Fax: (432) 687-0456

General Chemistry Parameters by EPA / Standard Methods - Quality Control
Permian Basin Environmental Lab, L.P.

Analyte	Result	Reporting Limit	Units	Spike Level	Source Result	%REC	%REC Limits	RPD	RPD Limit	Notes
---------	--------	--------------------	-------	----------------	------------------	------	----------------	-----	--------------	-------

Batch P5D2705 - * DEFAULT PREP *****

Blank (P5D2705-BLK1)

Prepared & Analyzed: 04/27/15

% Moisture ND 0.1 %

Duplicate (P5D2705-DUP1)

Source: 5D24002-01

Prepared & Analyzed: 04/27/15

% Moisture 10.0 0.1 % 11.0 9.52 20

Duplicate (P5D2705-DUP2)

Source: 5D24003-01

Prepared & Analyzed: 04/27/15

% Moisture 2.0 0.1 % 2.0 0.00 20

Batch P5D3006 - * DEFAULT PREP *****

Blank (P5D3006-BLK1)

Prepared: 04/29/15 Analyzed: 04/30/15

Chloride ND 1.00 mg/kg wet

LCS (P5D3006-BS1)

Prepared: 04/29/15 Analyzed: 04/30/15

Chloride 105 1.00 mg/kg wet 100 105 80-120

LCS Dup (P5D3006-BSD1)

Prepared: 04/29/15 Analyzed: 04/30/15

Chloride 105 1.00 mg/kg wet 100 105 80-120 0.334 20

Duplicate (P5D3006-DUP1)

Source: 5D22004-39

Prepared: 04/29/15 Analyzed: 04/30/15

Chloride 3310 27.5 mg/kg dry 3140 5.33 20

Duplicate (P5D3006-DUP2)

Source: 5D24001-01

Prepared: 04/29/15 Analyzed: 04/30/15

Chloride 3470 61.0 mg/kg dry 3490 0.544 20

Matrix Spike (P5D3006-MS1)

Source: 5D22004-39

Prepared: 04/29/15 Analyzed: 04/30/15

Chloride 6020 27.5 mg/kg dry 2750 3140 105 80-120

Larson & Associates, Inc.
P.O. Box 50685
Midland TX, 79710

Project: Paladiin/State BT "C" Battery
Project Number: 15-0130-01
Project Manager: Mark Larson

Fax: (432) 687-0456

General Chemistry Parameters by EPA / Standard Methods - Quality Control
Permian Basin Environmental Lab, L.P.

Analyte	Result	Reporting Limit	Units	Spike Level	Source Result	%REC	%REC Limits	RPD	RPD Limit	Notes
---------	--------	--------------------	-------	----------------	------------------	------	----------------	-----	--------------	-------

Batch P5E0503 - * DEFAULT PREP *****

Blank (P5E0503-BLK1)

Prepared: 04/30/15 Analyzed: 05/05/15

Chloride	ND	1.00	mg/kg wet							
----------	----	------	-----------	--	--	--	--	--	--	--

LCS (P5E0503-BS1)

Prepared: 04/30/15 Analyzed: 05/05/15

Chloride	107	1.00	mg/kg wet	100		107	80-120			
----------	-----	------	-----------	-----	--	-----	--------	--	--	--

LCS Dup (P5E0503-BSD1)

Prepared: 04/30/15 Analyzed: 05/05/15

Chloride	108	1.00	mg/kg wet	100		108	80-120	0.539	20	
----------	-----	------	-----------	-----	--	-----	--------	-------	----	--

Duplicate (P5E0503-DUP1)

Source: 5D22006-05

Prepared: 04/30/15 Analyzed: 05/05/15

Chloride	77.2	1.06	mg/kg dry		74.9			3.02	20	
----------	------	------	-----------	--	------	--	--	------	----	--

Duplicate (P5E0503-DUP2)

Source: 5D22006-15

Prepared: 04/30/15 Analyzed: 05/05/15

Chloride	444	1.18	mg/kg dry		440			0.862	20	
----------	-----	------	-----------	--	-----	--	--	-------	----	--

Larson & Associates, Inc.
P.O. Box 50685
Midland TX, 79710

Project: Paladiin/State BT "C" Battery
Project Number: 15-0130-01
Project Manager: Mark Larson

Fax: (432) 687-0456

Total Petroleum Hydrocarbons C6-C35 by EPA Method 8015M - Quality Control
Permian Basin Environmental Lab, L.P.

Analyte	Result	Reporting Limit	Units	Spike Level	Source Result	%REC	%REC Limits	RPD	RPD Limit	Notes
---------	--------	--------------------	-------	----------------	------------------	------	----------------	-----	--------------	-------

Batch P5D2702 - TX 1005

Duplicate (P5D2702-DUP1)		Source: 5D22006-12		Prepared: 04/24/15		Analyzed: 04/27/15				
C6-C12	ND	29.8	mg/kg dry		ND				20	
>C12-C28	29.9	29.8	"		ND				20	
Surrogate: 1-Chlorooctane	92.0		"	119		77.3	70-130			
Surrogate: o-Terphenyl	53.9		"	59.5		90.5	70-130			

Batch P5D3003 - TX 1005

Blank (P5D3003-BLK1)		Prepared & Analyzed: 04/27/15								
C6-C12	ND	25.0	mg/kg wet							
>C12-C28	ND	25.0	"							
>C28-C35	ND	25.0	"							
Surrogate: 1-Chlorooctane	65.6		"	100		65.6	70-130			S-GC
Surrogate: o-Terphenyl	38.6		"	50.0		77.2	70-130			

LCS (P5D3003-BS1)		Prepared & Analyzed: 04/27/15								
C6-C12	894	25.0	mg/kg wet	1000		89.4	75-125			
>C12-C28	1080	25.0	"	1000		108	75-125			
Surrogate: 1-Chlorooctane	88.6		"	100		88.6	70-130			
Surrogate: o-Terphenyl	43.8		"	50.0		87.6	70-130			

LCS Dup (P5D3003-BSD1)		Prepared & Analyzed: 04/27/15								
C6-C12	986	25.0	mg/kg wet	1000		98.6	75-125	9.85	20	
>C12-C28	1150	25.0	"	1000		115	75-125	6.17	20	
Surrogate: 1-Chlorooctane	87.7		"	100		87.7	70-130			
Surrogate: o-Terphenyl	40.7		"	50.0		81.5	70-130			

Duplicate (P5D3003-DUP1)		Source: 5D27003-01		Prepared: 04/27/15		Analyzed: 04/28/15				
C6-C12	2740	439	mg/kg dry		2900			5.86	20	
>C12-C28	22400	439	"		23700			5.82	20	
Surrogate: 1-Chlorooctane	147		"	175		83.7	70-130			
Surrogate: o-Terphenyl	91.1		"	87.7		104	70-130			

Larson & Associates, Inc.
P.O. Box 50685
Midland TX, 79710

Project: Paladiin/State BT "C" Battery
Project Number: 15-0130-01
Project Manager: Mark Larson

Fax: (432) 687-0456

Notes and Definitions

S-GC Surrogate recovery outside of control limits. The data was accepted based on valid recovery of the remaining surrogate.

DET Analyte DETECTED

ND Analyte NOT DETECTED at or above the reporting limit

NR Not Reported

dry Sample results reported on a dry weight basis

RPD Relative Percent Difference

LCS Laboratory Control Spike

MS Matrix Spike

Dup Duplicate

Report Approved By:



Date:

5/6/2015

Brent Barron, Laboratory Director/Technical Director

This material is intended only for the use of the individual (s) or entity to whom it is addressed, and may contain information that is privileged and confidential.

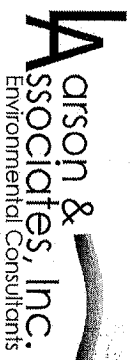
If you have received this material in error, please notify us immediately at 432-686-7235.

Aarson &
associates, Inc.
Environmental Consultants

DATE: 4-21-2015 PAGE 1 OF 2
PO #: LAB WORK ORDER #: SD22006
PROJECT LOCATION OR NAME: Poladin St. BT C. Battery
LAI PROJECT #: 15-0138-01 COLLECTOR: MJC

DATE: 4-21-2015 PAGE 1 OF 2
PO #: LAB WORK ORDER #: SD222006
PROJECT LOCATION OR NAME: Poladin St. BT C. Battery
LAI PROJECT #: 15-0138-01 COLLECTOR: MJC

TRRP report? <input type="checkbox"/> Yes <input checked="" type="checkbox"/> No		S-SOIL W=WATER A-AIR		P=PAINT SL=SLUDGE OT=OTHER	
TIME ZONE: Time zone/State:					
Field Sample I.D.		Lab #	Date	Time	Matrix
5b-1, 0'		-01	4/21/15	10:16	S
5b-1, 5'		-02		10:30	S
5b-1, 10'		-03		10:38	S
5b-1, 15'		-04		10:42	S
5b-1, 20'		-05		10:48	S
5b-1, 25'		-06		10:55	S
5b-1, 30'		-07		11:00	S
5b-1, 35'		-08		11:07	S
5b-2, 0'		-09		11:20	S
5b-2, 5'		-10		12:22	S
5b-2, 10'		-11		12:28	S
5b-2, 15'		-12		12:55	S
5b-2, 20'		-13		13:02	S
5b-2, 25'		-14		13:07	S
5b-2, 30'		-15		13:14	S
TOTAL					
RECEIVED BY: (Signature)		DATE/TIME		RECEIVED BY: (Signature)	
RELINQUISHED BY: (Signature)		DATE/TIME		RECEIVED BY: (Signature)	
RELINQUISHED BY: (Signature)		DATE/TIME		RECEIVED BY: (Signature)	
PERMANENT		ENV- Lab			
TURN AROUND TIME		LABORATORY USE ONLY:			
NORMAL <input checked="" type="checkbox"/>		RECEIVING TEMP: 14		THERM #: _____	
1 DAY <input type="checkbox"/>		CUSTODY SEALS - <input type="checkbox"/> BROKEN <input type="checkbox"/> INTACT <input type="checkbox"/> NOT USED			
2 DAY <input type="checkbox"/>		CARRIER BILL # _____			
OTHER <input type="checkbox"/>		<input checked="" type="checkbox"/> HAND DELIVERED			



507 N. Marientfield, Ste. 200
Midland, TX 79701
432-687-0901

Data Reported to:

DATE: 4-21-2015 PAGE 2 OF 2
PO #: LAB WORK ORDER # CD22009
PROJECT LOCATION OR NAME: Redin/Stat Rt "C" Hwy
LA PROJECT #: 15-0130-01 COLLECTOR: MUL

TRRP report?
☐ Yes ☒ No

S=SOIL
W=WATER
A=AIR
P=PAINT
SL=SLUDGE
OT=OTHER

TIME ZONE:
Time zone/State:
Mtn/ NM

Field
Sample I.D.

Lab #

Date

Time

Matrix

of Containers

HCl
HNO₃
H₂SO₄ ☐ NaOH ☐

ICE
UNPRESERVED

ANALYSES

BTEX ☐ MTBE ☐

TRPH 418.1 ☐ TPH 1005 ☐ TPH 1006 ☐

GASOLINE MOD 8015 ☐

DIESEL - MOD 8015 ☐

VOC 8260 ☐

SVOC 8270 ☐

8081 PESTICIDES ☐

8082 PCBs ☐

TCLP - METALS (RCRA) ☐

TCLP - PEST ☐

TCLP - METALS (RCRA) ☐

LEAD - TOTAL ☐

ROI ☐

TDS ☐

pH ☐

EXPLOSIVES ☐

CHLORIDE ☐

ANIONS ☐

ALKALINITY ☐

OTHER LIST ☐

SEMI-VOC ☐

HERB ☐

TOX ☐

FLASHPOINT ☐

% MOISTURE ☐

PECHLORATE ☐

CYANIDE ☐

FIELD NOTES

SB-2, 35' -10 4/2/15 13:28 S 1
SB-3, 1' -17 13:32 S 1
SB-3, 5' -18 13:40 S 1
SB-3, 10' -19 13:47 S 1
SB-3, 15' -20 13:54 S 1
SB-3, 20' -21 13:58 S 1
SB-3, 25' -22 14:09 S 1
SB-3, 30' -23 14:15 S 1
SB-3, 35' -24 14:20 S 1

TOTAL

RELINQUISHED BY: (Signature)

DATE/TIME

RECEIVED BY: (Signature)

TURN AROUND TIME

LABORATORY USE ONLY:

RELINQUISHED BY: (Signature)

DATE/TIME

RECEIVED BY: (Signature)

NORMAL ☒

RECEIVING TEMP: 10 THERM #: _____

RELINQUISHED BY: (Signature)

DATE/TIME

RECEIVED BY: (Signature)

2 DAY ☐

CUSTODY SEALS - ☐ BROKEN ☐ INTACT ☐ NOT USED

Permian Basin Env. Lab

CARRIER BILL # _____

HAND DELIVERED ☒

**PERMIAN BASIN
ENVIRONMENTAL LAB, LP
10014 SCR 1213
Midland, TX 79706**



Analytical Report

Prepared for:

Mark Larson
Larson & Associates, Inc.
P.O. Box 50685
Midland, TX 79710

Project: Paladin/State BT "D" Well #003 Battery

Project Number: 15-0130-02

Location: New Mexico

Lab Order Number: 5D22008



NELAP/TCEQ # T104704156-13-3

Report Date: 05/08/15

Larson & Associates, Inc.
P.O. Box 50685
Midland TX, 79710

Project: Paladin/State BT "D" Well #003 Battery
Project Number: 15-0130-02
Project Manager: Mark Larson

Fax: (432) 687-0456

ANALYTICAL REPORT FOR SAMPLES

Sample ID	Laboratory ID	Matrix	Date Sampled	Date Received
TMW-1	5D22008-01	Water	04/21/15 08:25	04-22-2015 10:21

Larson & Associates, Inc.
P.O. Box 50685
Midland TX, 79710

Project: Paladin/State BT "D" Well #003 Battery
Project Number: 15-0130-02
Project Manager: Mark Larson

Fax: (432) 687-0456

TMW-1
5D22008-01 (Water)

Analyte	Result	Reporting Limit	Units	Dilution	Batch	Prepared	Analyzed	Method	Notes
---------	--------	--------------------	-------	----------	-------	----------	----------	--------	-------

Permian Basin Environmental Lab, L.P.

Organics by GC

Benzene	ND	0.00100	mg/L	1	P5E0511	05/01/15	05/04/15	EPA 8021B
Toluene	ND	0.00100	mg/L	1	P5E0511	05/01/15	05/04/15	EPA 8021B
Ethylbenzene	ND	0.00100	mg/L	1	P5E0511	05/01/15	05/04/15	EPA 8021B
Xylene (p/m)	ND	0.00200	mg/L	1	P5E0511	05/01/15	05/04/15	EPA 8021B
Xylene (o)	ND	0.00100	mg/L	1	P5E0511	05/01/15	05/04/15	EPA 8021B
<i>Surrogate: 4-Bromofluorobenzene</i>		<i>83.8 %</i>	<i>80-120</i>		<i>P5E0511</i>	<i>05/01/15</i>	<i>05/04/15</i>	<i>EPA 8021B</i>
<i>Surrogate: 1,4-Difluorobenzene</i>		<i>96.5 %</i>	<i>80-120</i>		<i>P5E0511</i>	<i>05/01/15</i>	<i>05/04/15</i>	<i>EPA 8021B</i>

General Chemistry Parameters by EPA / Standard Methods

Chloride	40.4	5.00	mg/L	10	P5E0808	05/07/15	05/08/15	EPA 300.0
----------	------	------	------	----	---------	----------	----------	-----------

Larson & Associates, Inc.
P.O. Box 50685
Midland TX, 79710

Project: Paladin/State BT "D" Well #003 Battery
Project Number: 15-0130-02
Project Manager: Mark Larson

Fax: (432) 687-0456

Organics by GC - Quality Control
Permian Basin Environmental Lab, L.P.

Analyte	Result	Reporting Limit	Units	Spike Level	Source Result	%REC	%REC Limits	RPD	RPD Limit	Notes
---------	--------	--------------------	-------	----------------	------------------	------	----------------	-----	--------------	-------

Batch P5E0511 - General Preparation (GC)

Blank (P5E0511-BLK1)

Prepared: 05/01/15 Analyzed: 05/04/15

Benzene	ND	0.00100	mg/L							
Toluene	ND	0.00100	"							
Ethylbenzene	ND	0.00100	"							
Xylene (p/m)	ND	0.00200	"							
Xylene (o)	ND	0.00100	"							
Surrogate: 4-Bromofluorobenzene	52.4		ug/l	60.0		87.3	80-120			
Surrogate: 1,4-Difluorobenzene	63.6		"	60.0		106	80-120			

LCS (P5E0511-BS1)

Prepared: 05/01/15 Analyzed: 05/04/15

Benzene	0.0924	0.00100	mg/L	0.100		92.4	80-120			
Toluene	0.101	0.00100	"	0.100		101	80-120			
Ethylbenzene	0.114	0.00100	"	0.100		114	80-120			
Xylene (p/m)	0.227	0.00200	"	0.200		114	80-120			
Xylene (o)	0.112	0.00100	"	0.100		112	80-120			
Surrogate: 4-Bromofluorobenzene	62.6		ug/l	60.0		104	80-120			
Surrogate: 1,4-Difluorobenzene	55.9		"	60.0		93.1	80-120			

Duplicate (P5E0511-DUP1)

Source: 5D22010-01

Prepared: 05/01/15 Analyzed: 05/04/15

Benzene	0.00187	0.00100	mg/L		0.00227			19.3	20	
Toluene	ND	0.00100	"		ND				20	
Ethylbenzene	ND	0.00100	"		ND				20	
Xylene (p/m)	ND	0.00200	"		ND				20	
Xylene (o)	ND	0.00100	"		ND				20	
Surrogate: 4-Bromofluorobenzene	60.3		ug/l	60.0		101	80-120			
Surrogate: 1,4-Difluorobenzene	49.4		"	60.0		82.4	80-120			

Larson & Associates, Inc.
P.O. Box 50685
Midland TX, 79710

Project: Paladin/State BT "D" Well #003 Battery
Project Number: 15-0130-02
Project Manager: Mark Larson

Fax: (432) 687-0456

General Chemistry Parameters by EPA / Standard Methods - Quality Control
Permian Basin Environmental Lab, L.P.

Analyte	Result	Reporting Limit	Units	Spike Level	Source Result	%REC	%REC Limits	RPD	RPD Limit	Notes
---------	--------	--------------------	-------	----------------	------------------	------	----------------	-----	--------------	-------

Batch P5E0808 - * DEFAULT PREP *****

Blank (P5E0808-BLK1)

Prepared: 05/07/15 Analyzed: 05/08/15

Chloride	ND	0.500	mg/L
----------	----	-------	------

LCS (P5E0808-BS1)

Prepared: 05/07/15 Analyzed: 05/08/15

Chloride	10.3	0.500	mg/L	10.0	103	80-120
----------	------	-------	------	------	-----	--------

LCS Dup (P5E0808-BSD1)

Prepared: 05/07/15 Analyzed: 05/08/15

Chloride	10.3	0.500	mg/L	10.0	103	80-120	0.475	20
----------	------	-------	------	------	-----	--------	-------	----

Duplicate (P5E0808-DUP1)

Source: 5D22008-01

Prepared: 05/07/15 Analyzed: 05/08/15

Chloride	38.4	5.00	mg/L	40.4	5.20	20
----------	------	------	------	------	------	----

Matrix Spike (P5E0808-MS1)

Source: 5D22008-01

Prepared: 05/07/15 Analyzed: 05/08/15

Chloride	147	5.00	mg/L	100	40.4	107	80-120
----------	-----	------	------	-----	------	-----	--------

Larson & Associates, Inc.
P.O. Box 50685
Midland TX, 79710

Project: Paladin/State BT "D" Well #003 Battery
Project Number: 15-0130-02
Project Manager: Mark Larson

Fax: (432) 687-0456

Notes and Definitions

DET Analyte DETECTED
ND Analyte NOT DETECTED at or above the reporting limit
NR Not Reported
dry Sample results reported on a dry weight basis
RPD Relative Percent Difference
LCS Laboratory Control Spike
MS Matrix Spike
Dup Duplicate

Report Approved By:



Date: 5/8/2015

Brent Barron, Laboratory Director/Technical Director

This material is intended only for the use of the individual (s) or entity to whom it is addressed, and may contain information that is privileged and confidential.

If you have received this material in error, please notify us immediately at 432-686-7235.

APPENDIX D

Initial and Final C-141

District I
1625 N. French Dr., Hobbs, NM 88240
District II
811 S. First St., Artesia, NM 88210
District III
1000 Rio Brazos Road, Aztec, NM 87410
District IV
1220 S. St. Francis Dr., Santa Fe, NM 87505

State of New Mexico
Energy Minerals and Natural Resources

Oil Conservation Division
1220 South St. Francis Dr.
Santa Fe, NM 87505

Form C-141
Revised August 8, 2011

Submit 1 Copy to appropriate District Office in
accordance with 19.15.29 NMAC.

Release Notification and Corrective Action

OPERATOR		<input checked="" type="checkbox"/> Initial Report	<input type="checkbox"/> Final Report
Name of Company: Paladin Energy Corp		Contact: Mickey Horn	
Address: 10290 Monroe Dr., Ste 301, Fort Worth, TX 75229		Telephone No. (214) 352-7273	
Facility Name: State BT "C" No. 003		Facility Type: Tank Battery	
Surface Owner: State of New Mexico		Mineral Owner: State of New Mexico	API No. 30-025-01017-00-00

LOCATION OF RELEASE

Unit Letter L	Section 35	Township 11S	Range 33E	Feet from the 1,980	North/South Line South	Feet from the 660	East/West Line West	County Lea
------------------	---------------	-----------------	--------------	------------------------	---------------------------	----------------------	------------------------	---------------

Latitude 33° 19' 04" Longitude 103° 34' 12"

NATURE OF RELEASE

Type of Release: Crude oil/produced water	Volume of Release: 15 bbl oil and 40 bbl water	Volume Recovered: 7 bbl (total fluid)
Source of Release: Valve failure at free water knockout	Date and Hour of Occurrence: 03/15/2015	Date and Hour of Discovery: 03/16/2015
Was Immediate Notice Given? <input type="checkbox"/> Yes <input checked="" type="checkbox"/> No <input type="checkbox"/> Not Required	If YES, To Whom?	
By Whom?	Date and Hour	
Was a Watercourse Reached? <input type="checkbox"/> Yes <input checked="" type="checkbox"/> No	If YES, Volume Impacting the Watercourse.	
If a Watercourse was Impacted, Describe Fully.*		
RECEIVED By OCD; Dr. Oberding at 1:05 pm, Apr 07, 2015		

Describe Cause of Problem and Remedial Action Taken.* Pop-off relief valve failed at free water knockout causing liquids to spill onto ground. Spill is limited to area inside firewall and no liquid escaped firewall. A vacuum truck was used to pick up free liquid. Backhoe and roust-a-bout crew to pick up oily soil for disposal at OCD approved facility.

Describe Area Affected and Cleanup Action Taken.* Area affected by spill is inside firewall and did not affect area outside of firewall. Composite soil samples will be collected and analyzed following removal of oily soil and reported to OCD to determine if further remediation is required.
Note: Composite samples are not accepted.

I hereby certify that the information given above is true and complete to the best of my knowledge and understand that pursuant to NMOC rules and regulations all operators are required to report and/or file certain release notifications and perform corrective actions for releases which may endanger public health or the environment. The acceptance of a C-141 report by the NMOC marked as "Final Report" does not relieve the operator of liability should their operations have failed to adequately investigate and remediate contamination that pose a threat to ground water, surface water, human health or the environment. In addition, NMOC acceptance of a C-141 report does not relieve the operator of responsibility for compliance with any other federal, state, or local laws and/or regulations.

OIL CONSERVATION DIVISION

Signature: <i>Mickey Horn</i>	Hydrologist
Printed Name: Mickey Horn	Approved by Environmental Specialist: <i>[Signature]</i> P.H.O.
Title: Operations Manager	Approval Date: 04/07/2015 Expiration Date: 07/07/2015
E-mail Address: paladinmid@suddenlink.net	Conditions of Approval:
Date: April 6, 2015 Phone: (432) 522-2162	Site samples required. Delineate and remediate area as per NMOC guides.
Attached <input type="checkbox"/>	
IRP-3593 164070	

* Attach Additional Sheets If Necessary

nTO1509747584

pTO1509747792

District I
1625 N. French Dr., Hobbs, NM 88240
District II
1301 W. Grand Avenue, Artesia, NM 88210
District III
1000 Rio Brazos Road, Aztec, NM 87410
District IV
1220 S. St. Francis Dr., Santa Fe, NM 87505

1RP-3593
State of New Mexico
Energy Minerals and Natural Resources
Oil Conservation Division
1220 South St. Francis Dr.
Santa Fe, NM 87505

Form C-141
Revised October 10, 2003
Submit 2 Copies to appropriate
District Office in accordance
with Rule 116 on back
side of form

Release Notification and Corrective Action

OPERATOR

☐ Initial Report ☒ Final Report

Name of Company: Paladin Energy Corp.	Contact: Mickey Horn
Address: 10290 Monroe Dr., Ste. 301, Fort Worth, TX 75229	Telephone No.: (214) 352-7273
Facility Name: State BT "C" No. 003	Facility Type: Tank Battery

Surface Owner: State of New Mexico	Mineral Owner: State of new Mexico	API No. 30-025-01017-00-00
------------------------------------	------------------------------------	----------------------------

LOCATION OF RELEASE

Unit Letter L	Section 35	Township 11S	Range 33E	Feet from the 1,980	North/South Line South	Feet from the 660	East/West Line West	County: Lea
------------------	---------------	-----------------	--------------	------------------------	---------------------------	----------------------	------------------------	-------------

Latitude: N 33° 19' 0.4" Longitude: W 103° 34' 12"

NATURE OF RELEASE

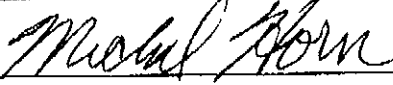
Type of Release: Crude Oil and Produced Water	Volume of Release: 15bbl oil/ 40 bbl water	Volume Recovered: 7 bbl
Source of Release: Valve failure at free water knockout	Date and Hour of Occurrence: 03/15/2015	Date and Hour of Discovery: 03/16/2015
Was Immediate Notice Given? <input type="checkbox"/> Yes <input checked="" type="checkbox"/> No <input type="checkbox"/> Not Required	If YES, To Whom?	
By Whom?	Date and Hour	
Was a Watercourse Reached? <input type="checkbox"/> Yes <input checked="" type="checkbox"/> No	If YES, Volume Impacting the Watercourse.	

If a Watercourse was Impacted, Describe Fully.*

Describe Cause of Problem and Remedial Action Taken.* Pop-off relief valve failed at free water knock out causing liquids to spill onto ground. Spill is limited to area inside firewall and no liquids escaped firewall. A vacuum truck was used to pick up free liquid. Backhoe and roust-a-bout crew picked up oil soil for disposal at OCD approved facility.

Describe Area Affected and Cleanup Action Taken.* Spill is limited to area inside firewall. Three (3) borings were drilled inside firewall to delineate the spill and 1 boring outside (southeast) to collect a groundwater sample. TPH was delineated with at least 2 clean samples from each boring. Chloride was delineated vertically to 250 mg/Kg. Groundwater not affected by spill with chloride being less than 50 mg/L. About 275 cubic yards of soil was excavated from inside firewall and hauled to Gandy Marley Landfill. Liner was installed in southeast corner of battery and excavations were filled with clean soil before replacing firewall.

I hereby certify that the information given above is true and complete to the best of my knowledge and understand that pursuant to NMOCD rules and regulations all operators are required to report and/or file certain release notifications and perform corrective actions for releases which may endanger public health or the environment. The acceptance of a C-141 report by the NMOCD marked as "Final Report" does not relieve the operator of liability should their operations have failed to adequately investigate and remediate contamination that pose a threat to ground water, surface water, human health or the environment. In addition, NMOCD acceptance of a C-141 report does not relieve the operator of responsibility for compliance with any other federal, state, or local laws and/or regulations.

Signature: 	1RP-3593 OIL CONSERVATION DIVISION	
Printed Name: Mickey Horn (Paladin Energy Corp.)	Approved by: _____	
Title: Sr. Project Manager / President, Larson and Associates, Inc.	Approval Date: _____	Expiration Date: _____
E-mail Address: paladinmid@suddenlink.net	Conditions of Approval: _____	
Date: 06/26/2015 Phone: (432) 522-2162	Attached <input type="checkbox"/>	

* Attach Additional Sheets if Necessary