

# Centurion, Crossroads AWC Pipeline

Leak date: 07/01/2017  
Lea County, NM  
1RP-4756

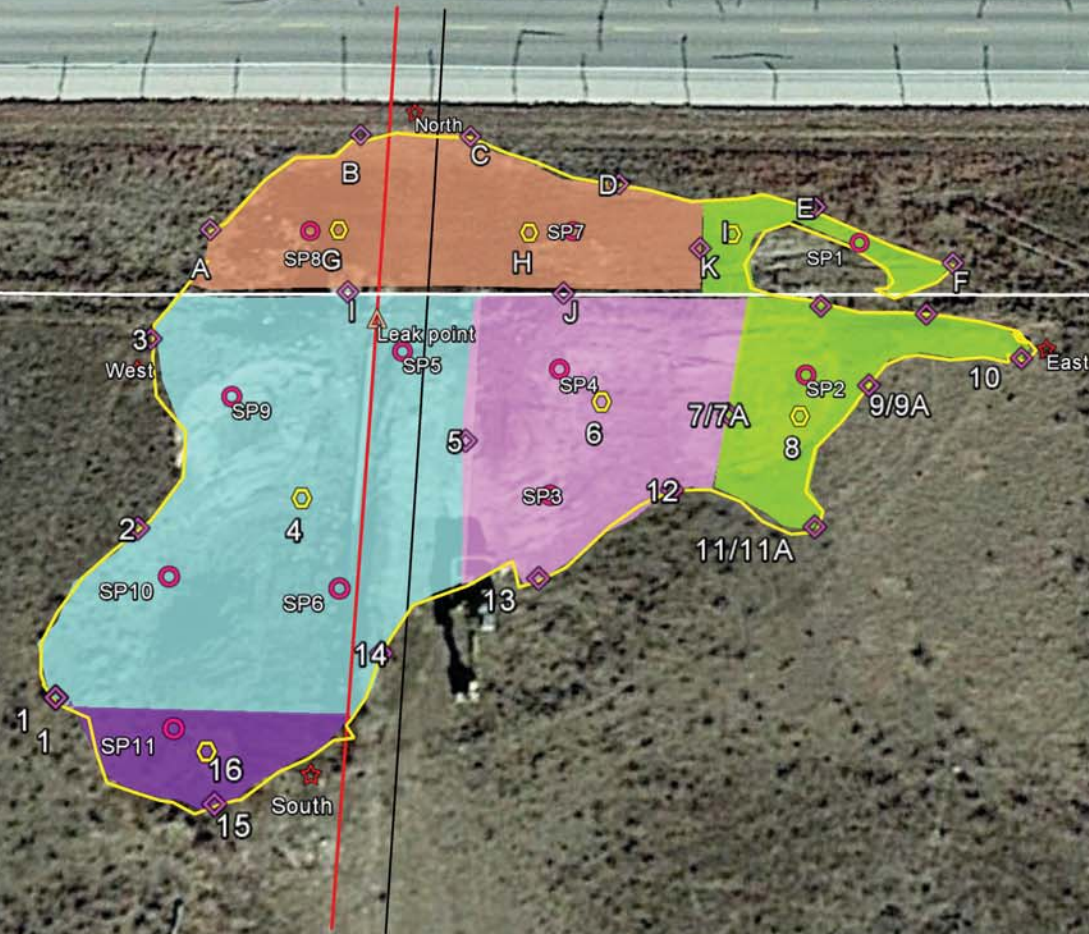
**APPROVED**

*By Olivia Yu at 1:16 pm, Mar 23, 2018*

NMOCD approves of the delineation completed for 1RP-4756 north of the fence and proposed remediation.

## Legend

- 10 ft Excavation
- 3 ft Excavation
- 4 ft Excavation
- 6 ft Excavation
- 8 ft Excavation
- Active line
- Cardinal sample points
- Fence line
- Inactive line
- Leak Area
- Leak point
- Proposed bottom confirmation samples
- Proposed sidewall confirmation samples
- Sample points





**Laboratory Analytical Results Summary**  
**Crossroads AWC Pipeline**

		Sample	SP1 @ 1'	SP1 @ 4'	SP1 @ 6'	SP1 @ 8'	SP1 @ 11'	SP1 @ 13'	SP1 @ 18'
Analyte	Method	Date	8/8/17	8/8/17	8/8/17	8/8/17	8/8/17	8/8/17	3/14/18
			mg/Kg	mg/Kg	mg/Kg	mg/Kg	mg/Kg	mg/Kg	mg/Kg
Benzene	BTEX 8021B		<0.500	1.72	<0.400	<0.050	<0.050	<0.050	<0.050
Toluene	BTEX 8021B		5.71	16.7	6.25	<0.050	<0.050	<0.050	<0.050
Ethylbenzene	BTEX 8021B		7.17	13.3	9.79	<0.050	<0.050	<0.050	<0.050
Total Xylenes	BTEX 8021B		46.7	72.1	43.6	<0.150	<0.150	<0.150	<0.150
Total BTEX	BTEX 8021B		59.6	104	59.7	<0.300	<0.300	<0.300	<0.300
Chloride	SM4500Cl-B		64	368	336	256	176	192	<16.0
GRO	TPH 8015M		2960	3020	4530	<10.0	<10.0	<10.0	<10.0
DRO	TPH 8015M		13700	9230	17300	20.1	77.1	68.3	<10.0
EXT DRO	TPH 8015M		1510	926	1750	21.5	13.5	12	<10.0

		Sample	SP2 @ 1'	SP2 @ 4'	SP2 @ 6'	SP2 @ 8'	SP2 @ 11'	SP2 @ 13'	SP2 @ 18'
Analyte	Method	Date	8/8/17	8/8/17	8/8/17	8/8/17	8/8/17	8/8/17	1/17/18
			mg/Kg	mg/Kg	mg/Kg	mg/Kg	mg/Kg	mg/Kg	mg/Kg
Benzene	BTEX 8021B		0.51	0.603	0.544	<0.050	<0.050	<0.050	<0.050
Toluene	BTEX 8021B		8.26	8.76	7.43	<0.050	<0.050	<0.050	<0.050
Ethylbenzene	BTEX 8021B		10.4	10.9	10.5	<0.050	<0.050	<0.050	<0.050
Total Xylenes	BTEX 8021B		52	53.6	45.8	<0.150	<0.150	<0.150	<0.150
Total BTEX	BTEX 8021B		71.2	73.8	64.3	<0.300	<0.300	<0.300	<0.300
Chloride	SM4500Cl-B		32	336	384	240	240	160	176
GRO	TPH 8015M		4700	3580	4480	<10.0	<10.0	<10.0	<10.0
DRO	TPH 8015M		18100	11900	17600	29.3	28.5	69.7	<10.0
EXT DRO	TPH 8015M		1770	1220	1820	25.1	<10.0	11.6	<10.0

		Sample	SP3 @ 1'	SP3 @ 2'	SP3 @ 3'	SP3 @ 5'	SP3 @ 10'
Analyte	Method	Date	8/8/17	8/8/17	8/8/17	1/17/18	1/17/18
			mg/Kg	mg/Kg	mg/Kg	mg/Kg	mg/Kg
Benzene	BTEX 8021B		<0.050	<0.050	<0.050	<0.050	<0.050
Toluene	BTEX 8021B		<0.050	<0.050	<0.050	<0.050	<0.050
Ethylbenzene	BTEX 8021B		<0.050	<0.050	<0.050	<0.050	<0.050
Total Xylenes	BTEX 8021B		<0.150	<0.150	0.18	<0.150	<0.150
Total BTEX	BTEX 8021B		<0.300	<0.300	<0.300	<0.300	<0.300
Chloride	SM4500Cl-B		32	16	64	176	128
GRO	TPH 8015M		<10.0	<10.0	<10.0	<10.0	<10.0
DRO	TPH 8015M		38.8	<10.0	51.7	<10.0	<10.0
EXT DRO	TPH 8015M		10.2	<10.0	14.9	<10.0	<10.0

		Sample	SP4 @ 1'	SP4 @ 2'	SP4 @ 3'	SP4 @ 5'	SP4 @ 10'
Analyte	Method	Date	8/8/17	8/8/17	8/8/17	1/17/18	1/17/18
			mg/Kg	mg/Kg	mg/Kg	mg/Kg	mg/Kg
Benzene	BTEX 8021B		<0.050	<0.050	<0.050	<0.050	<0.050
Toluene	BTEX 8021B		<0.050	<0.050	<0.050	<0.050	<0.050
Ethylbenzene	BTEX 8021B		<0.050	<0.050	<0.050	<0.050	<0.050
Total Xylenes	BTEX 8021B		<0.150	<0.150	0.178	<0.150	<0.150
Total BTEX	BTEX 8021B		<0.300	<0.300	<0.300	<0.300	<0.300
Chloride	SM4500Cl-B		16	<16.0	64	160	144
GRO	TPH 8015M		<10.0	<10.0	<10.0	<10.0	<10.0
DRO	TPH 8015M		16.1	<10.0	45.5	<10.0	<10.0
EXT DRO	TPH 8015M		<10.0	<10.0	12.8	<10.0	<10.0

		Sample	SP5 @ 1'	SP5 @ 2'	SP5 @ 3'	SP5 @ 4'	SP5 @ 5'	SP5 @ 10'	SP5 @ 15'
Analyte	Method	Date	8/9/17	8/9/17	8/9/17	1/18/18	1/18/18	1/18/18	1/18/18
			mg/Kg	mg/Kg	mg/Kg	mg/Kg	mg/Kg	mg/Kg	mg/Kg
Benzene	BTEX 8021B		13.3	5.52	6.77	<0.050	<0.050	<0.050	<0.050
Toluene	BTEX 8021B		103	59.3	41.7	<0.050	<0.050	<0.050	<0.050
Ethylbenzene	BTEX 8021B		78.1	41.1	25.1	<0.050	<0.050	<0.050	<0.050
Total Xylenes	BTEX 8021B		276	207	136	<0.150	<0.150	<0.150	<0.150
Total BTEX	BTEX 8021B		470	313	209	<0.300	<0.300	<0.300	<0.300
Chloride	SM4500Cl-B		32	16	32	16	32	16	32
GRO	TPH 8015M		12500	7350	3240	<10.0	<10.0	<10.0	<10.0
DRO	TPH 8015M		26400	20200	8680	<10.0	<10.0	<10.0	<10.0
EXT DRO	TPH 8015M		2590	2030	1100	<10.0	<10.0	<10.0	<10.0

		Sample	SP6 @ 1'	SP6 @ 2'	SP6 @ 3'	SP6 @ 4'	SP6 @ 5'	SP6 @ 10'	SP6 @ 15'
Analyte	Method	Date	8/9/17	8/9/17	8/9/17	1/18/18	1/18/18	1/18/18	1/18/18
			mg/Kg	mg/Kg	mg/Kg	mg/Kg	mg/Kg	mg/Kg	mg/Kg
Benzene	BTEX 8021B		<0.050	<0.050	<0.050	<0.050	<0.050	<0.050	<0.050
Toluene	BTEX 8021B		0.064	<0.050	<0.050	<0.050	<0.050	<0.050	<0.050
Ethylbenzene	BTEX 8021B		<0.050	<0.050	<0.050	<0.050	<0.050	<0.050	<0.050
Total Xylenes	BTEX 8021B		0.163	0.263	0.347	<0.150	<0.150	<0.150	<0.150
Total BTEX	BTEX 8021B		<0.300	<0.300	0.347	<0.300	<0.300	<0.300	<0.300
Chloride	SM4500Cl-B		16	<16.0	<16.0	<16.0	<16.0	<16.0	16
GRO	TPH 8015M		<10.0	<10.0	12.3	<10.0	<10.0	<10.0	<10.0
DRO	TPH 8015M		346	863	1350	<10.0	<10.0	<10.0	<10.0
EXT DRO	TPH 8015M		82.6	188	312	<10.0	<10.0	<10.0	<10.0

		Sample	SP7 @ 1'	SP7 @ 2'	SP7 @ 3'	SP7 @ 4'	SP7 @ 6'	SP7 @ 8'	SP7 @ 10'	SP7 @ 15'	SP7 @ 20'
Analyte	Method	Date	8/9/17	8/9/17	8/9/17	3/14/18	3/14/18	3/14/18	3/14/18	3/14/18	3/14/18
			mg/Kg	mg/Kg	mg/Kg	mg/Kg	mg/Kg	mg/Kg	mg/Kg	mg/Kg	mg/Kg
Benzene	BTEX 8021B		15.4	10.3	12.2	4.79	6.47	<0.050	<0.050	<0.050	<0.050
Toluene	BTEX 8021B		107	69.7	71.6	33.6	47.5	0.169	<0.050	<0.050	0.053
Ethylbenzene	BTEX 8021B		64.6	39.9	42.6	16.3	29	0.408	<0.050	<0.050	<0.050
Total Xylenes	BTEX 8021B		267	198	212	116	128	2.22	<0.150	<0.150	0.221
Total BTEX	BTEX 8021B		454	318	338	171	211	2.79	<0.300	<0.300	<0.300
Chloride	SM4500Cl-B		16	16	<16.0	<16.0	<16.0	32	<16.0	32	32
GRO	TPH 8015M		10000	6910	6620	2680	3030	94.1	<10.0	<10.0	<10.0
DRO	TPH 8015M		26100	24200	24400	6980	6940	784	<10.0	<10.0	<10.0
EXT DRO	TPH 8015M		2840	2960	2930	616	658	83.2	<10.0	<10.0	<10.0

		Sample	SP8 @ 1'	SP8 @ 2'	SP8 @ 3'	SP8 @ 4'	SP8 @ 6'	SP8 @ 8'	SP8 @ 10'	SP8 @ 15'	SP8 @ 20'
Analyte	Method	Date	8/9/17	8/9/17	8/9/17	3/14/18	3/14/18	3/14/18	3/14/18	3/14/18	3/14/18
			mg/Kg	mg/Kg	mg/Kg	mg/Kg	mg/Kg	mg/Kg	mg/Kg	mg/Kg	mg/Kg
Benzene	BTEX 8021B		<5.00	5.9	6.05	1.25	<0.050	<0.050	<0.050	<0.050	<0.050
Toluene	BTEX 8021B		40.4	44.2	51.1	14.4	6.48	0.386	0.12	0.301	<0.050
Ethylbenzene	BTEX 8021B		26.8	30.5	34	10.4	8.26	0.557	0.141	0.214	<0.050
Total Xylenes	BTEX 8021B		189	150	168	72.5	40.7	3.3	0.797	1.21	0.194
Total BTEX	BTEX 8021B		256	231	259	98.5	55.4	4.24	1.06	1.73	<0.300
Chloride	SM4500Cl-B		<16.0	<16.0	16	<16.0	32	<16.0	<16.0	32	<16.0
GRO	TPH 8015M		7490	5360	5110	2060	1010	164	<10.0	<10.0	<10.0
DRO	TPH 8015M		23400	19300	18000	6590	3650	1230	<10.0	<10.0	<10.0
EXT DRO	TPH 8015M		2530	2010	2000	555	320	121	<10.0	<10.0	<10.0

**Laboratory Analytical Results Summary**  
**Crossroads AWC Pipeline**

		Sample	SP9 @ 1'	SP9 @ 2'	SP9 @ 3'	SP9 @ 4'	SP9 @ 5'	SP9 @ 10'	SP9 @ 15'
Analyte	Method	Date	8/9/17	8/9/17	8/9/17	1/19/18	1/19/18	1/19/18	1/19/18
			mg/Kg	mg/Kg	mg/Kg	mg/Kg	mg/Kg	mg/Kg	mg/Kg
Benzene	BTEX 8021B		<0.050	<0.050	<0.050	<0.050	<0.050	<0.050	<0.050
Toluene	BTEX 8021B		<0.050	<0.050	<0.050	<0.050	<0.050	<0.050	<0.050
Ethylbenzene	BTEX 8021B		0.059	<0.050	<0.050	<0.050	<0.050	<0.050	<0.050
Total Xylenes	BTEX 8021B		<0.150	<0.150	<0.150	<0.150	<0.150	<0.150	<0.150
Total BTEX	BTEX 8021B		<0.300	<0.300	<0.300	<0.300	<0.300	<0.300	<0.300
Chloride	SM4500Cl-B		<16.0	16	16	<16.0	16	<16.0	<16.0
GRO	TPH 8015M		<10.0	<10.0	<10.0	<10.0	<10.0	<10.0	<10.0
DRO	TPH 8015M		736	170	172	<10.0	<10.0	<10.0	<10.0
EXT DRO	TPH 8015M		129	30.7	47.2	<10.0	<10.0	<10.0	<10.0

		Sample	NORTH @ SURFACE	SOUTH @ SURFACE	EAST @ SURFACE	WEST @ SURFACE
Analyte	Method	Date	8/9/17	8/9/17	8/9/17	8/9/17
			mg/Kg	mg/Kg	mg/Kg	mg/Kg
Benzene	BTEX 8021B		<0.050	<0.050	<0.050	<0.050
Toluene	BTEX 8021B		<0.050	0.06	0.089	<0.050
Ethylbenzene	BTEX 8021B		<0.050	0.063	0.075	<0.050
Total Xylenes	BTEX 8021B		<0.150	0.306	0.329	<0.150
Total BTEX	BTEX 8021B		<0.300	0.429	0.493	<0.300
Chloride	SM4500Cl-B		16	16	16	32
GRO	TPH 8015M		<10.0	<10.0	<10.0	<10.0
DRO	TPH 8015M		<10.0	<10.0	<10.0	<10.0
EXT DRO	TPH 8015M		<10.0	<10.0	<10.0	<10.0

		Sample	SP10 @ 1'	SP10 @ 2'	SP10 @ 3'	SP10 @ 4'	SP10 @ 5'	SP10 @ 10'	SP10 @ 15'
Analyte	Method	Date	8/9/17	8/9/17	8/9/17	1/19/18	1/19/18	1/19/18	1/19/18
			mg/Kg	mg/Kg	mg/Kg	mg/Kg	mg/Kg	mg/Kg	mg/Kg
Benzene	BTEX 8021B		<0.050	<0.050	<0.050	<0.050	<0.050	<0.050	<0.050
Toluene	BTEX 8021B		<0.050	<0.050	<0.050	<0.050	<0.050	<0.050	<0.050
Ethylbenzene	BTEX 8021B		<0.050	<0.050	<0.050	<0.050	<0.050	<0.050	<0.050
Total Xylenes	BTEX 8021B		<0.150	<0.150	<0.150	<0.150	<0.150	<0.150	<0.150
Total BTEX	BTEX 8021B		<0.300	<0.300	<0.300	<0.300	<0.300	<0.300	<0.300
Chloride	SM4500Cl-B		16	<16.0	<16.0	32	16	32	<16.0
GRO	TPH 8015M		<10.0	<10.0	<10.0	<10.0	<10.0	<10.0	<10.0
DRO	TPH 8015M		528	245	127	<10.0	<10.0	<10.0	<10.0
EXT DRO	TPH 8015M		90	43.1	37.3	<10.0	<10.0	<10.0	<10.0

		Sample	SP11 @ 1'	SP11 @ 2'	SP11 @ 3'	SP11 @ 4'	SP11 @ 5'	SP11 @ 6'	SP11 @ 11'	SP11 @ 16'
Analyte	Method	Date	8/9/17	8/9/17	8/9/17	1/22/18	1/22/18	1/22/18	1/22/18	1/22/18
			mg/Kg	mg/Kg	mg/Kg	mg/Kg	mg/Kg	mg/Kg	mg/Kg	mg/Kg
Benzene	BTEX 8021B		<0.050	<0.050	<0.050	<0.500	<0.050	<0.050	<0.050	<0.050
Toluene	BTEX 8021B		<0.050	<0.050	<0.050	3.52	<0.050	<0.050	<0.050	<0.050
Ethylbenzene	BTEX 8021B		<0.050	<0.050	<0.050	4.82	<0.050	<0.050	<0.050	<0.050
Total Xylenes	BTEX 8021B		<0.150	<0.150	<0.150	23.3	0.348	<0.150	<0.150	<0.150
Total BTEX	BTEX 8021B		<0.300	<0.300	<0.300	31.6	0.348	<0.300	<0.300	<0.300
Chloride	SM4500Cl-B		<16.0	<16.0	<16.0	16	32	<16.0	16	16
GRO	TPH 8015M		<10.0	<10.0	<10.0	751	26.8	<10.0	<10.0	<10.0
DRO	TPH 8015M		549	252	117	2950	360	<10.0	<10.0	<10.0
EXT DRO	TPH 8015M		92.6	46.2	36.4	311	56.2	<10.0	<10.0	<10.0



---

PHONE (575) 393-2326 • 101 E. MARLAND • HOBBS, NM 88240

March 16, 2018

Cliff Brunson

BBC International, Inc.

P. O. Box 805

Hobbs, NM 88241

RE: CROSSROADS AWC PIPELINE

Enclosed are the results of analyses for samples received by the laboratory on 03/15/18 10:35.

Cardinal Laboratories is accredited through Texas NELAP under certificate number T104704398-17-10. Accreditation applies to drinking water, non-potable water and solid and chemical materials. All accredited analytes are denoted by an asterisk (\*). For a complete list of accredited analytes and matrices visit the TCEQ website at [www.tceq.texas.gov/field/qa/lab\\_accred\\_certif.html](http://www.tceq.texas.gov/field/qa/lab_accred_certif.html).

Cardinal Laboratories is accredited through the State of Colorado Department of Public Health and Environment for:

Method EPA 552.2	Halocetic Acids (HAA-5)
Method EPA 524.2	Total Trihalomethanes (TTHM)
Method EPA 524.4	Regulated VOCs (V1, V2, V3)

Accreditation applies to public drinking water matrices.

This report meets NELAP requirements and is made up of a cover page, analytical results, and a copy of the original chain-of-custody. If you have any questions concerning this report, please feel free to contact me.

Sincerely,

A handwritten signature in black ink, appearing to read "Celey D. Keene", written in a cursive style.

Celey D. Keene

Lab Director/Quality Manager

**Analytical Results For:**

BBC International, Inc.

Cliff Brunson

P.O. Box 805

Hobbs NM, 88241

Fax To: (575) 397-0397

Received:	03/15/2018	Sampling Date:	03/14/2018
Reported:	03/16/2018	Sampling Type:	Soil
Project Name:	CROSSROADS AWC PIPELINE	Sampling Condition:	Cool & Intact
Project Number:	CENTURION	Sample Received By:	Tamara Oldaker
Project Location:	OXY - TATUM		

**Sample ID: SP 1 @ 18 (H800755-01)**

BTEx 8021B		mg/kg		Analyzed By: MS						
Analyte	Result	Reporting Limit	Analyzed	Method Blank	BS	% Recovery	True Value QC	RPD	Qualifier	
Benzene*	<0.050	0.050	03/15/2018	ND	1.99	99.6	2.00	1.93		
Toluene*	<0.050	0.050	03/15/2018	ND	2.04	102	2.00	0.340		
Ethylbenzene*	<0.050	0.050	03/15/2018	ND	2.01	101	2.00	0.528		
Total Xylenes*	<0.150	0.150	03/15/2018	ND	6.16	103	6.00	0.336		
Total BTEx	<0.300	0.300	03/15/2018	ND						

<i>Surrogate: 4-Bromofluorobenzene (P1D)</i>										
		93.9 %	72-148							
<b>Chloride, SM4500Cl-B</b>			mg/kg	<b>Analyzed By: AC</b>						

Analyte	Result	Reporting Limit	Analyzed	Method Blank	BS	% Recovery	True Value QC	RPD	Qualifier
Chloride	<16.0	16.0	03/15/2018	ND	480	120	400	0.00	

TPH 8015M									
mg/kg			Analyzed By: MS						
Analyte	Result	Reporting Limit	Analyzed	Method Blank	BS	% Recovery	True Value QC	RPD	Qualifier
GRO C6-C10*	<10.0	10.0	03/15/2018	ND	194	97.1	200	1.28	
DRO >C10-C28*	<10.0	10.0	03/15/2018	ND	215	107	200	3.78	
EXT DRO >C28-C36	<10.0	10.0	03/15/2018	ND					

*Surrogate: 1-Chlorooctane*      88.5 %      41-142  
*Surrogate: 1-Chlorodecane*      87.5 %      37.6-147

**Cardinal Laboratories**

\*=Accredited Analyte

PLEASE NOTE: Liability and Damages. Cardinal's liability and client's exclusive remedy for any claim arising, whether based in contract or tort, shall be limited to the amount paid by client for analysis. All claims, including those for negligence and any other cause whatsoever shall be deemed waived unless made in writing and received by Cardinal within thirty (30) days after completion of the applicable service. In no event shall Cardinal be liable for incidental or consequential damages, including, without limitation, business interruptions, loss of use, or loss of profits incurred by client, its subsidiaries, affiliates or successors arising out of or related to the performance of the services hereunder by Cardinal, regardless of whether such claim is based upon any of the above stated reasons or otherwise. Results relate only to the samples identified above. This report shall not be reproduced except in full with written approval of Cardinal Laboratories.



Celey D. Keene, Lab Director/Quality Manager

**Analytical Results For:**

BBC International, Inc.

Cliff Brunson

P.O. Box 805

Hobbs NM, 88241

Fax To: (575) 397-0397

Received: 03/15/2018  
 Reported: 03/16/2018  
 Project Name: CROSSROADS AWC PIPELINE  
 Project Number: CENTURION  
 Project Location: OXY - TATUM

Sampling Date: 03/14/2018  
 Sampling Type: Soil  
 Sampling Condition: Cool & Intact  
 Sample Received By: Tamara Oldaker

**Sample ID: SP 7 @ 4 (H800755-02)**

BTEx 80218		mg/ kg		Analyzed By: MS						
Analyte	Result	Reporting Limit	Analyzed	Method Blank	BS	% Recovery	True Value	QC	RPD	Qualifier
Benzene*	4.79	0.500	03/15/2018	ND	1.99	99.6	2.00		1.93	
Toluene*	33.6	0.500	03/15/2018	ND	2.04	102	2.00		0.340	
Ethylbenzene*	16.3	0.500	03/15/2018	ND	2.01	101	2.00		0.528	
Total Xylenes*	116	1.50	03/15/2018	ND	6.16	103	6.00		0.336	
Total BTEx	171	3.00	03/15/2018	ND						

Surrogate: 4-Bromofluorobenzene (PTD Chloride, SM4500Cl-B	115 %	72-148	Analyzed By: AC
mg/kg			

Analyte	Result	Reporting Limit	Analyzed	Method Blank	BS	% Recovery	True Value QC	RPD	Qualifier
Chloride	<16.0	16.0	03/15/2018	ND	480	120	400	0.00	
TPH 8015M		mg/kg	Analyzed By: MS						

Analyte	Result	Reporting Limit	Analyzed	Method Blank	BS	% Recovery	True Value QC	RPD	Qualifier
GRO C6-C10*	2680	50.0	03/15/2018	ND	194	97.1	200	1.28	
DRO >C10-C28*	6980	50.0	03/15/2018	ND	215	107	200	3.78	
EXT DRO >C28-C36	616	50.0	03/15/2018	ND					

Surrogate: 1-Chlorooctane	181 %	41-142							
Surrogate: 1-Chlorodecane	116 %	37.6-147							

Cardinal Laboratories

\*=Accredited Analyte

PLEASE NOTE: Liability and Damages. Cardinal's liability and client's exclusive remedy for any claim arising, whether based in contract or tort, shall be limited to the amount paid by client for analysis. All claims, including those for negligence and any other cause whatsoever shall be deemed waived unless made in writing and received by Cardinal within thirty (30) days after completion of the applicable service. In no event shall Cardinal be liable for incidental or consequential damages, including, without limitation, business interruptions, loss of use, or loss of profits incurred by client, its subsidiaries, affiliates or successors arising out of or related to the performance of the services hereunder by Cardinal, regardless of whether such claim is based upon any of the above stated reasons or otherwise. Results relate only to the samples identified above. This report shall not be reproduced except in full with written approval of Cardinal Laboratories.



Celey D. Keene, Lab Director/Quality Manager

**Analytical Results For:**

BBC International, Inc.

Cliff Brunson

P.O. Box 805

Hobbs NM, 88241

Fax To: (575) 397-0397

Received: 03/15/2018  
 Reported: 03/16/2018  
 Project Name: CROSSROADS AWC PIPELINE  
 Project Number: CENTURION  
 Project Location: OXY - TATUM

Sampling Date: 03/14/2018  
 Sampling Type: Soil  
 Sampling Condition: Cool & Intact  
 Sample Received By: Tamara Oldaker

**Sample ID: SP 7 @ 6 (H800755-03)**

BTEx 80218		mg/kg		Analyzed By: MS					
Analyte	Result	Reporting Limit	Analyzed	Method Blank	BS	% Recovery	True Value QC	RPD	Qualifier
Benzene*	6.47	0.500	03/15/2018	ND	1.99	99.6	2.00	1.93	
Toluene*	47.5	0.500	03/15/2018	ND	2.04	102	2.00	0.340	
Ethylbenzene*	29.0	0.500	03/15/2018	ND	2.01	101	2.00	0.528	
Total Xylenes*	128	1.50	03/15/2018	ND	6.16	103	6.00	0.336	
Total BTEx	211	3.00	03/15/2018	ND					

Surrogate: 4-Bromofluorobenzene (PTD)		115 %	72-148						
Chloride, SM4500Cl-B		mg/kg		Analyzed By: AC					

Analyte	Result	Reporting Limit	Analyzed	Method Blank	BS	% Recovery	True Value QC	RPD	Qualifier
Chloride	<16.0	16.0	03/15/2018	ND	480	120	400	0.00	
TPH 8015M		mg/kg		Analyzed By: MS					

Analyte	Result	Reporting Limit	Analyzed	Method Blank	BS	% Recovery	True Value QC	RPD	Qualifier
GRO C6-C10*	3030	50.0	03/15/2018	ND	194	97.1	200	1.28	
DRO >C10-C28*	6940	50.0	03/15/2018	ND	215	107	200	3.78	
EXT DRO >C28-C36	658	50.0	03/15/2018	ND					

Surrogate: 1-Chlorooctane	188 %	41-142							
Surrogate: 1-Chlorodecane	153 %	37.6-147							

Cardinal Laboratories

\*=Accredited Analyte

PLEASE NOTE: Liability and Damages. Cardinal's liability and client's exclusive remedy for any claim arising, whether based in contract or tort, shall be limited to the amount paid by client for analysis. All claims, including those for negligence and any other cause whatsoever shall be deemed waived unless made in writing and received by Cardinal within thirty (30) days after completion of the applicable service. In no event shall Cardinal be liable for incidental or consequential damages, including, without limitation, business interruptions, loss of use, or loss of profits incurred by client, its subsidiaries, affiliates or successors arising out of or related to the performance of the services hereunder by Cardinal, regardless of whether such claim is based upon any of the above stated reasons or otherwise. Results relate only to the samples identified above. This report shall not be reproduced except in full with written approval of Cardinal Laboratories.



Celey D. Keene, Lab Director/Quality Manager

**Analytical Results For:**

BBC International, Inc.

Cliff Brunson

P.O. Box 805

Hobbs NM, 88241

Fax To: (575) 397-0397

Received: 03/15/2018  
 Reported: 03/16/2018  
 Project Name: CROSSROADS AWC PIPELINE  
 Project Number: CENTURION  
 Project Location: OXY - TATUM

Sampling Date: 03/14/2018  
 Sampling Type: Soil  
 Sampling Condition: Cool & Intact  
 Sample Received By: Tamara Oldaker

**Sample ID: SP 7 @ 8 (H800755-04)**

BTEx 8021B		mg/ kg		Analyzed By: MS						
Analyte	Result	Reporting Limit	Analyzed	Method Blank	BS	% Recovery	True Value	QC	RPD	Qualifier
Benzene*	<0.050	0.050	03/15/2018	ND	1.99	99.6	2.00		1.93	
Toluene*	0.169	0.050	03/15/2018	ND	2.04	102	2.00		0.340	
Ethylbenzene*	0.408	0.050	03/15/2018	ND	2.01	101	2.00		0.528	
Total Xylenes*	2.22	0.150	03/15/2018	ND	6.16	103	6.00		0.336	
Total BTEx	2.79	0.300	03/15/2018	ND						

Surrogate: 4-Bromofluorobenzene (PTD)		114 %	72-148						
Chloride, SM4500Cl-B		mg/kg		Analyzed By: AC					

Analyte	Result	Reporting Limit	Analyzed	Method Blank	BS	% Recovery	True Value QC	RPD	Qualifier
Chloride	32.0	16.0	03/15/2018	ND	480	120	400	0.00	
TPH 8015M		mg/kg		Analyzed By: MS					
Analyte	Result	Reporting Limit	Analyzed	Method Blank	BS	% Recovery	True Value QC	RPD	Qualifier
GRO C6-C10*	94.1	10.0	03/15/2018	ND	194	97.1	200	1.28	
DRO >C10-C28*	784	10.0	03/15/2018	ND	215	107	200	3.78	
EXT DRO >C28-C36	83.2	10.0	03/15/2018	ND					

Surrogate: 1-Chlorooctane	92.6 %	41-142							
Surrogate: 1-Chlorodecane	105 %	37.6-147							

**Cardinal Laboratories**

\*=Accredited Analyte

PLEASE NOTE: Liability and Damages. Cardinal's liability and client's exclusive remedy for any claim arising, whether based in contract or tort, shall be limited to the amount paid by client for analysis. All claims, including those for negligence and any other cause whatsoever shall be deemed waived unless made in writing and received by Cardinal within thirty (30) days after completion of the applicable service. In no event shall Cardinal be liable for incidental or consequential damages, including, without limitation, business interruptions, loss of use, or loss of profits incurred by client, its subsidiaries, affiliates or successors arising out of or related to the performance of the services hereunder by Cardinal, regardless of whether such claim is based upon any of the above stated reasons or otherwise. Results relate only to the samples identified above. This report shall not be reproduced except in full with written approval of Cardinal Laboratories.



Celey D. Keene, Lab Director/Quality Manager



**Analytical Results For:**

BBC International, Inc.

Cliff Brunson

P.O. Box 805

Hobbs NM, 88241

Fax To: (575) 397-0397

Received:	03/15/2018	Sampling Date:	03/14/2018
Reported:	03/16/2018	Sampling Type:	Soil
Project Name:	CROSSROADS AWC PIPELINE	Sampling Condition:	Cool & Intact
Project Number:	CENTURION	Sample Received By:	Tamara Oldaker
Project Location:	OXY - TATUM		

**Sample ID: SP 7 @ 10 (H800755-05)**

BTEx 80218		mg/kg		Analyzed By: MS	
Analyte	Result	Reporting Limit	Analyzed	Method Blank	BS
Benzene*	<0.050	0.050	03/15/2018	ND	1.99
					% Recovery 99.6
					True Value QC 2.00
					RPD 1.93
Toluene*	<0.050	0.050	03/15/2018	ND	2.04
					% Recovery 102
					True Value QC 2.00
					RPD 0.340
Ethylbenzene*	<0.050	0.050	03/15/2018	ND	2.01
					% Recovery 101
					True Value QC 2.00
					RPD 0.528
Total Xylenes*	<0.150	0.150	03/15/2018	ND	6.16
					% Recovery 103
					True Value QC 6.00
					RPD 0.336
Total BTEx	<0.300	0.300	03/15/2018	ND	

Surrogate: 4-Bromofluorobenzene (PTD) 92.6 % 72-148

Chloride, SM4500Cl-B		mg/kg		Analyzed By: AC	
Analyte	Result	Reporting Limit	Analyzed	Method Blank	BS
Chloride	<16.0	16.0	03/15/2018	ND	480
					% Recovery 120
					True Value QC 400
					RPD 0.00

TPH 8015M		mg/kg		Analyzed By: MS	
Analyte	Result	Reporting Limit	Analyzed	Method Blank	BS
GR0 C6-C10*	<10.0	10.0	03/15/2018	ND	194
					% Recovery 97.1
					True Value QC 200
					RPD 1.28
DRO >C10-C28*	<10.0	10.0	03/15/2018	ND	215
					% Recovery 107
					True Value QC 200
					RPD 3.78
EXT DRO >C28-C36	<10.0	10.0	03/15/2018	ND	

Surrogate: 1-Chlorooctane 89.2 % 41-142

Surrogate: 1-Chlorodecane 88.7 % 37.6-147

**Cardinal Laboratories**

\*=Accredited Analyte

PLEASE NOTE: Liability and Damages. Cardinal's liability and client's exclusive remedy for any claim arising, whether based in contract or tort, shall be limited to the amount paid by client for analysis. All claims, including those for negligence and any other cause whatsoever shall be deemed waived unless made in writing and received by Cardinal within thirty (30) days after completion of the applicable service. In no event shall Cardinal be liable for incidental or consequential damages, including, without limitation, business interruptions, loss of use, or loss of profits incurred by client, its subsidiaries, affiliates or successors arising out of or related to the performance of the services hereunder by Cardinal, regardless of whether such claim is based upon any of the above stated reasons or otherwise. Results relate only to the samples identified above. This report shall not be reproduced except in full with written approval of Cardinal Laboratories.



Celey D. Keene, Lab Director/Quality Manager

**Analytical Results For:**

BBC International, Inc.

Cliff Brunson

P.O. Box 805

Hobbs NM, 88241

Fax To: (575) 397-0397

Received: 03/15/2018  
Reported: 03/16/2018  
Project Name: CROSSROADS AWC PIPELINE  
Project Number: CENTURION  
Project Location: OXY - TATUM

Sampling Date: 03/14/2018  
Sampling Type: Soil  
Sampling Condition: Cool & Intact  
Sample Received By: Tamara Oldaker

**Sample ID: SP 7 @ 15 (H800755-06)****BTEX 8021B** **mg/kg****Analyzed By: MS**

Analyte	Result	Reporting Limit	Analyzed	Method Blank	BS	% Recovery	True Value QC	RPD	Qualifier
Benzene*	<0.050	0.050	03/15/2018	ND	1.99	99.6	2.00	1.93	
Toluene*	<0.050	0.050	03/15/2018	ND	2.04	102	2.00	0.340	
Ethylbenzene*	<0.050	0.050	03/15/2018	ND	2.01	101	2.00	0.528	
Total Xylenes*	<0.150	0.150	03/15/2018	ND	6.16	103	6.00	0.336	
Total BTEX	<0.300	0.300	03/15/2018	ND					

**Surrogate: 4-Bromofluorobenzene (PTD)** **95.0 %** **72-148****Chloride, SM4500Cl-B** **mg/kg****Analyzed By: AC**

Analyte	Result	Reporting Limit	Analyzed	Method Blank	BS	% Recovery	True Value QC	RPD	Qualifier
<b>Chloride</b>	<b>32.0</b>	16.0	03/15/2018	ND	480	120	400	0.00	
<b>TPH 8015M</b>			<b>Analyzed By: MS</b>						

Analyte	Result	Reporting Limit	Analyzed	Method Blank	BS	% Recovery	True Value QC	RPD	Qualifier
GR0 C6-C10*	<10.0	10.0	03/15/2018	ND	194	97.1	200	1.28	
DRO >C10-C28*	<10.0	10.0	03/15/2018	ND	215	107	200	3.78	
EXT DRO >C28-C36	<10.0	10.0	03/15/2018	ND					

**Surrogate: 1-Chlorooctane** **89.7 %** **41-142****Surrogate: 1-Chlorodecane** **88.0 %** **37.6-147****Cardinal Laboratories****\*=Accredited Analyte**

PLEASE NOTE: Liability and Damages. Cardinal's liability and client's exclusive remedy for any claim arising, whether based in contract or tort, shall be limited to the amount paid by client for analysis. All claims, including those for negligence and any other cause whatsoever shall be deemed waived unless made in writing and received by Cardinal within thirty (30) days after completion of the applicable service. In no event shall Cardinal be liable for incidental or consequential damages, including, without limitation, business interruptions, loss of use, or loss of profits incurred by client, its subsidiaries, affiliates or successors arising out of or related to the performance of the services hereunder by Cardinal, regardless of whether such claim is based upon any of the above stated reasons or otherwise. Results relate only to the samples identified above. This report shall not be reproduced except in full with written approval of Cardinal Laboratories.



Celey D. Keene, Lab Director/Quality Manager

**Analytical Results For:**

BBC International, Inc.

Cliff Brunson

P.O. Box 805

Hobbs NM, 88241

Fax To: (575) 397-0397

Received: 03/15/2018  
 Reported: 03/16/2018  
 Project Name: CROSSROADS AWC PIPELINE  
 Project Number: CENTURION  
 Project Location: OXY - TATUM

Sampling Date: 03/14/2018  
 Sampling Type: Soil  
 Sampling Condition: Cool & Intact  
 Sample Received By: Tamara Oldaker

**Sample ID: SP 7 @ 20 (H800755-07)**

BTEx 80218		mg/kg		Analyzed By: MS					
Analyte	Result	Reporting Limit	Analyzed	Method Blank	BS	% Recovery	True Value QC	RPD	Qualifier
Benzene*	<0.050	0.050	03/15/2018	ND	1.99	99.6	2.00	1.93	
<b>Toluene*</b>	<b>0.053</b>	0.050	03/15/2018	ND	2.04	102	2.00	0.340	
Ethylbenzene*	<0.050	0.050	03/15/2018	ND	2.01	101	2.00	0.528	
<b>Total Xylenes*</b>	<b>0.221</b>	0.150	03/15/2018	ND	6.16	103	6.00	0.336	
Total BTEx	<0.300	0.300	03/15/2018	ND					

Surrogate: 4-Bromofluorobenzene (PTD)		91.7 %	72-148	Analyzed By: AC
Chloride, SM4500Cl-B	mg/kg			

Analyte	Result	Reporting Limit	Analyzed	Method Blank	BS	% Recovery	True Value QC	RPD	Qualifier
<b>Chloride</b>	<b>32.0</b>	16.0	03/15/2018	ND	480	120	400	0.00	
<b>TPH 8015M</b>	<b>mg/kg</b>	<b>Analyzed By: MS</b>							

GR0 C6-C10*	<10.0	10.0	03/16/2018	ND	194	97.1	200	1.28	
DRO >C10-C28*	<10.0	10.0	03/16/2018	ND	215	107	200	3.78	
EXT DRO >C28-C36	<10.0	10.0	03/16/2018	ND					

<i>Surrogate: 1-Chlorooctane</i>	82.5 %	41-142							
<i>Surrogate: 1-Chlorodecane</i>	79.3 %	37.6-147							

**Cardinal Laboratories**

\*=Accredited Analyte

PLEASE NOTE: Liability and Damages. Cardinal's liability and client's exclusive remedy for any claim arising, whether based in contract or tort, shall be limited to the amount paid by client for analysis. All claims, including those for negligence and any other cause whatsoever shall be deemed waived unless made in writing and received by Cardinal within thirty (30) days after completion of the applicable service. In no event shall Cardinal be liable for incidental or consequential damages, including, without limitation, business interruptions, loss of use, or loss of profits incurred by client, its subsidiaries, affiliates or successors arising out of or related to the performance of the services hereunder by Cardinal, regardless of whether such claim is based upon any of the above stated reasons or otherwise. Results relate only to the samples identified above. This report shall not be reproduced except in full with written approval of Cardinal Laboratories.



Celey D. Keene, Lab Director/Quality Manager

**Analytical Results For:**

BBC International, Inc.

Cliff Brunson

P.O. Box 805

Hobbs NM, 88241

Fax To: (575) 397-0397

Received: 03/15/2018  
 Reported: 03/16/2018  
 Project Name: CROSSROADS AWC PIPELINE  
 Project Number: CENTURION  
 Project Location: OXY - TATUM

Sampling Date: 03/14/2018  
 Sampling Type: Soil  
 Sampling Condition: Cool & Intact  
 Sample Received By: Tamara Oldaker

**Sample ID: SP 8 @ 4 (H800755-08)**

BTEx 80218		mg/kg		Analyzed By: MS					
Analyte	Result	Reporting Limit	Analyzed	Method Blank	BS	% Recovery	True Value QC	RPD	Qualifier
Benzene*	1.25	0.500	03/15/2018	ND	1.99	99.6	2.00	1.93	
Toluene*	14.4	0.500	03/15/2018	ND	2.04	102	2.00	0.340	
Ethylbenzene*	10.4	0.500	03/15/2018	ND	2.01	101	2.00	0.528	
Total Xylenes*	72.5	1.50	03/15/2018	ND	6.16	103	6.00	0.336	
Total BTEx	98.5	3.00	03/15/2018	ND					

Surrogate: 4-Bromofluorobenzene (PTD)		113 %	72-148						
Chloride, SM4500Cl-B		mg/kg		Analyzed By: AC					

Analyte	Result	Reporting Limit	Analyzed	Method Blank	BS	% Recovery	True Value QC	RPD	Qualifier
Chloride	<16.0	16.0	03/15/2018	ND	480	120	400	0.00	
TPH 8015M		mg/kg		Analyzed By: MS					

Analyte	Result	Reporting Limit	Analyzed	Method Blank	BS	% Recovery	True Value QC	RPD	Qualifier
GRO C6-C10*	2060	50.0	03/16/2018	ND	194	97.1	200	1.28	
DRO >C10-C28*	6590	50.0	03/16/2018	ND	215	107	200	3.78	
EXT DRO >C28-C36	555	50.0	03/16/2018	ND					

Surrogate: 1-Chlorooctane	176 %	41-142							
Surrogate: 1-Chlorodecane	115 %	37.6-147							

Cardinal Laboratories

\*=Accredited Analyte

PLEASE NOTE: Liability and Damages. Cardinal's liability and client's exclusive remedy for any claim arising, whether based in contract or tort, shall be limited to the amount paid by client for analysis. All claims, including those for negligence and any other cause whatsoever shall be deemed waived unless made in writing and received by Cardinal within thirty (30) days after completion of the applicable service. In no event shall Cardinal be liable for incidental or consequential damages, including, without limitation, business interruptions, loss of use, or loss of profits incurred by client, its subsidiaries, affiliates or successors arising out of or related to the performance of the services hereunder by Cardinal, regardless of whether such claim is based upon any of the above stated reasons or otherwise. Results relate only to the samples identified above. This report shall not be reproduced except in full with written approval of Cardinal Laboratories.



Celey D. Keene, Lab Director/Quality Manager



**Analytical Results For:**

BBC International, Inc.

Cliff Brunson

P.O. Box 805

Hobbs NM, 88241

Fax To: (575) 397-0397

Received: 03/15/2018  
 Reported: 03/16/2018  
 Project Name: CROSSROADS AWC PIPELINE  
 Project Number: CENTURION  
 Project Location: OXY - TATUM

Sampling Date: 03/14/2018  
 Sampling Type: Soil  
 Sampling Condition: Cool & Intact  
 Sample Received By: Tamara Oldaker

**Sample ID: SP 8 @ 6 (H800755-09)**

BTEx 80218		mg/kg		Analyzed By: MS					
Analyte	Result	Reporting Limit	Analyzed	Method Blank	BS	% Recovery	True Value QC	RPD	Qualifier
Benzene*	<0.500	0.500	03/15/2018	ND	1.99	99.6	2.00	1.93	
Toluene*	<b>6.48</b>	0.500	03/15/2018	ND	2.04	102	2.00	0.340	
Ethylbenzene*	<b>8.26</b>	0.500	03/15/2018	ND	2.01	101	2.00	0.528	
Total Xylenes*	<b>40.7</b>	1.50	03/15/2018	ND	6.16	103	6.00	0.336	
Total BTEx	<b>55.4</b>	3.00	03/15/2018	ND					

Surrogate: 4-Bromofluorobenzene (PLD Chloride, SM4500Cl-B	109 %	72-148	Analyzed By: AC
mg/kg			

Analyte	Result	Reporting Limit	Analyzed	Method Blank	BS	% Recovery	True Value QC	RPD	Qualifier
Chloride	<b>32.0</b>	16.0	03/15/2018	ND	480	120	400	0.00	
TPH 8015M		mg/kg	Analyzed By: MS						

Analyte	Result	Reporting Limit	Analyzed	Method Blank	BS	% Recovery	True Value QC	RPD	Qualifier
GRO C6-C10*	<b>1010</b>	50.0	03/16/2018	ND	194	97.1	200	1.28	
DRO >C10-C28*	<b>3650</b>	50.0	03/16/2018	ND	215	107	200	3.78	
EXT DRO >C28-C36	<b>320</b>	50.0	03/16/2018	ND					

Surrogate: 1-Chlorooctane	138 %	41-142							
Surrogate: 1-Chlorodecane	106 %	37.6-147							

Cardinal Laboratories

\*=Accredited Analyte

PLEASE NOTE: Liability and Damages. Cardinal's liability and client's exclusive remedy for any claim arising, whether based in contract or tort, shall be limited to the amount paid by client for analysis. All claims, including those for negligence and any other cause whatsoever shall be deemed waived unless made in writing and received by Cardinal within thirty (30) days after completion of the applicable service. In no event shall Cardinal be liable for incidental or consequential damages, including, without limitation, business interruptions, loss of use, or loss of profits incurred by client, its subsidiaries, affiliates or successors arising out of or related to the performance of the services hereunder by Cardinal, regardless of whether such claim is based upon any of the above stated reasons or otherwise. Results relate only to the samples identified above. This report shall not be reproduced except in full with written approval of Cardinal Laboratories.



Celey D. Keene, Lab Director/Quality Manager

**Analytical Results For:**

BBC International, Inc.

Cliff Brunson

P.O. Box 805

Hobbs NM, 88241

Fax To: (575) 397-0397

Received: 03/15/2018  
 Reported: 03/16/2018  
 Project Name: CROSSROADS AWC PIPELINE  
 Project Number: CENTURION  
 Project Location: OXY - TATUM

Sampling Date: 03/14/2018  
 Sampling Type: Soil  
 Sampling Condition: Cool & Intact  
 Sample Received By: Tamara Oldaker

**Sample ID: SP 8 @ 8 (H800755-10)**

BTEx 80218		mg/kg	Analyzed By: MS						
Analyte	Result	Reporting Limit	Analyzed	Method Blank	BS	% Recovery	True Value QC	RPD	Qualifier
Benzene*	<0.050	0.050	03/15/2018	ND	1.99	99.6	2.00	1.93	
Toluene*	0.386	0.050	03/15/2018	ND	2.04	102	2.00	0.340	
Ethylbenzene*	0.557	0.050	03/15/2018	ND	2.01	101	2.00	0.528	
Total Xylenes*	3.30	0.150	03/15/2018	ND	6.16	103	6.00	0.336	
Total BTEx	4.24	0.300	03/15/2018	ND					

Surrogate: 4-Bromofluorobenzene (PTD) 111 % 72-148  
 Chloride, SM4500Cl-B mg/kg Analyzed By: AC

Analyte	Result	Reporting Limit	Analyzed	Method Blank	BS	% Recovery	True Value QC	RPD	Qualifier
Chloride	<16.0	16.0	03/15/2018	ND	480	120	400	0.00	
TPH 8015M		mg/kg	Analyzed By: MS						

Analyte	Result	Reporting Limit	Analyzed	Method Blank	BS	% Recovery	True Value QC	RPD	Qualifier
GRO C6-C10*	164	10.0	03/16/2018	ND	194	97.1	200	1.28	
DRO >C10-C28*	1230	10.0	03/16/2018	ND	215	107	200	3.78	
EXT DRO >C28-C36	121	10.0	03/16/2018	ND					

Surrogate: 1-Chlorooctane 83.3 % 41-142  
 Surrogate: 1-Chlorodecane 95.4 % 37.6-147

Cardinal Laboratories

\*=Accredited Analyte

PLEASE NOTE: Liability and Damages. Cardinal's liability and client's exclusive remedy for any claim arising, whether based in contract or tort, shall be limited to the amount paid by client for analysis. All claims, including those for negligence and any other cause whatsoever shall be deemed waived unless made in writing and received by Cardinal within thirty (30) days after completion of the applicable service. In no event shall Cardinal be liable for incidental or consequential damages, including, without limitation, business interruptions, loss of use, or loss of profits incurred by client, its subsidiaries, affiliates or successors arising out of or related to the performance of the services hereunder by Cardinal, regardless of whether such claim is based upon any of the above stated reasons or otherwise. Results relate only to the samples identified above. This report shall not be reproduced except in full with written approval of Cardinal Laboratories.



Celey D. Keene, Lab Director/Quality Manager

**Analytical Results For:**

BBC International, Inc.

Cliff Brunson

P.O. Box 805

Hobbs NM, 88241

Fax To: (575) 397-0397

Received: 03/15/2018  
 Reported: 03/16/2018  
 Project Name: CROSSROADS AWC PIPELINE  
 Project Number: CENTURION  
 Project Location: OXY - TATUM

Sampling Date: 03/14/2018  
 Sampling Type: Soil  
 Sampling Condition: Cool & Intact  
 Sample Received By: Tamara Oldaker

**Sample ID: SP 8 @ 10 (H800755-11)**

BTEx 80218		mg/kg		Analyzed By: MS					
Analyte	Result	Reporting Limit	Analyzed	Method Blank	BS	% Recovery	True Value QC	RPD	Qualifier
Benzene*	<0.050	0.050	03/16/2018	ND	1.99	99.6	2.00	1.93	
Toluene*	<b>0.120</b>	0.050	03/16/2018	ND	2.04	102	2.00	0.340	
Ethylbenzene*	<b>0.141</b>	0.050	03/16/2018	ND	2.01	101	2.00	0.528	
Total Xylenes*	<b>0.797</b>	0.150	03/16/2018	ND	6.16	103	6.00	0.336	
Total BTEx	<b>1.06</b>	0.300	03/16/2018	ND					

<i>Surrogate: 4-Bromofluorobenzene (PTD)</i>		93.6 %	72-148						
Chloride, SM4500Cl-B		mg/kg		Analyzed By: AC					

Analyte	Result	Reporting Limit	Analyzed	Method Blank	BS	% Recovery	True Value QC	RPD	Qualifier
Chloride	<16.0	16.0	03/15/2018	ND	400	100	400	3.92	
TPH 8015M		mg/kg		Analyzed By: MS					

Analyte	Result	Reporting Limit	Analyzed	Method Blank	BS	% Recovery	True Value QC	RPD	Qualifier
GR0 C6-C10*	<10.0	10.0	03/16/2018	ND	194	97.1	200	1.28	
DRO >C10-C28*	<10.0	10.0	03/16/2018	ND	215	107	200	3.78	
EXT DRO >C28-C36	<10.0	10.0	03/16/2018	ND					

<i>Surrogate: 1-Chlorooctane</i>	84.3 %	41-142							
<i>Surrogate: 1-Chlorodecane</i>	81.4 %	37.6-147							

**Cardinal Laboratories**

\* = Accredited Analyte

PLEASE NOTE: Liability and Damages. Cardinal's liability and client's exclusive remedy for any claim arising, whether based in contract or tort, shall be limited to the amount paid by client for analysis. All claims, including those for negligence and any other cause whatsoever shall be deemed waived unless made in writing and received by Cardinal within thirty (30) days after completion of the applicable service. In no event shall Cardinal be liable for incidental or consequential damages, including, without limitation, business interruptions, loss of use, or loss of profits incurred by client, its subsidiaries, affiliates or successors arising out of or related to the performance of the services hereunder by Cardinal, regardless of whether such claim is based upon any of the above stated reasons or otherwise. Results relate only to the samples identified above. This report shall not be reproduced except in full with written approval of Cardinal Laboratories.



Celey D. Keene, Lab Director/Quality Manager

**Analytical Results For:**

BBC International, Inc.

Cliff Brunson

P.O. Box 805

Hobbs NM, 88241

Fax To: (575) 397-0397

Received: 03/15/2018  
 Reported: 03/16/2018  
 Project Name: CROSSROADS AWC PIPELINE  
 Project Number: CENTURION  
 Project Location: OXY - TATUM

Sampling Date: 03/14/2018  
 Sampling Type: Soil  
 Sampling Condition: Cool & Intact  
 Sample Received By: Tamara Oldaker

**Sample ID: SP 8 @ 15 (H800755-12)**

BTEx 8021B		mg/ kg	Analyzed By: MS							
Analyte	Result	Reporting Limit	Analyzed	Method Blank	BS	% Recovery	True Value	QC	RPD	Qualifier
Benzene*	<0.050	0.050	03/16/2018	ND	1.99	99.6	2.00		1.93	
Toluene*	0.301	0.050	03/16/2018	ND	2.04	102	2.00		0.340	
Ethylbenzene*	0.214	0.050	03/16/2018	ND	2.01	101	2.00		0.528	
Total Xylenes*	1.21	0.150	03/16/2018	ND	6.16	103	6.00		0.336	
Total BTEx	1.73	0.300	03/16/2018	ND						

<i>Surrogate: 4-Bromofluorobenzene (PTD)</i>		94.5 %	72-148						
<b>Chloride, SM4500Cl-B</b>		mg/kg		Analyzed By: AC					

Chloride		Result	Reporting Limit	Analyzed	Method Blank	BS	% Recovery	True Value QC	RPD	Qualifier
TPH 8015M		mg/kg		Analyzed By: MS						
Analyte	Result	Reporting Limit	Analyzed	Method Blank	BS	% Recovery	True Value QC	RPD	Qualifier	
GRO C6-C10*	<10.0	10.0	03/16/2018	ND	194	97.1	200	1.28		
DRO >C10-C28*	<10.0	10.0	03/16/2018	ND	215	107	200	3.78		
EXT DRO >C28-C36	<10.0	10.0	03/16/2018	ND						

<i>Surrogate: 1-Chlorooctane</i>	82.9 %	41-142
<i>Surrogate: 1-Chlorodecane</i>	81.1 %	37.6-147

**Cardinal Laboratories**

\*=Accredited Analyte

PLEASE NOTE: Liability and Damages. Cardinal's liability and client's exclusive remedy for any claim arising, whether based in contract or tort, shall be limited to the amount paid by client for analysis. All claims, including those for negligence and any other cause whatsoever shall be deemed waived unless made in writing and received by Cardinal within thirty (30) days after completion of the applicable service. In no event shall Cardinal be liable for incidental or consequential damages, including, without limitation, business interruptions, loss of use, or loss of profits incurred by client, its subsidiaries, affiliates or successors arising out of or related to the performance of the services hereunder by Cardinal, regardless of whether such claim is based upon any of the above stated reasons or otherwise. Results relate only to the samples identified above. This report shall not be reproduced except in full with written approval of Cardinal Laboratories.



Celey D. Keene, Lab Director/Quality Manager



**Analytical Results For:**

BBC International, Inc.

Cliff Brunson

P.O. Box 805

Hobbs NM, 88241

Fax To: (575) 397-0397

Received: 03/15/2018  
 Reported: 03/16/2018  
 Project Name: CROSSROADS AWC PIPELINE  
 Project Number: CENTURION  
 Project Location: OXY - TATUM

Sampling Date: 03/14/2018  
 Sampling Type: Soil  
 Sampling Condition: Cool & Intact  
 Sample Received By: Tamara Oldaker

**Sample ID: SP 8 @ 20 (H800755-13)**
**BTEX 8021B**      **mg/kg**
**Analyzed By: MS**

Analyte	Result	Reporting Limit	Analyzed	Method Blank	BS	% Recovery	True Value QC	RPD	Qualifier
Benzene*	<0.050	0.050	03/16/2018	ND	1.99	99.6	2.00	1.93	
Toluene*	<0.050	0.050	03/16/2018	ND	2.04	102	2.00	0.340	
Ethylbenzene*	<0.050	0.050	03/16/2018	ND	2.01	101	2.00	0.528	
<b>Total Xylenes*</b>	<b>0.194</b>	0.150	03/16/2018	ND	6.16	103	6.00	0.336	
Total BTEX	<0.300	0.300	03/16/2018	ND					

*Surrogate: 4-Bromofluorobenzene (PTD)*      92.2 %      72-148

**Chloride, SM4500Cl-B**      **mg/kg**
**Analyzed By: AC**

Analyte	Result	Reporting Limit	Analyzed	Method Blank	BS	% Recovery	True Value QC	RPD	Qualifier
Chloride	<16.0	16.0	03/15/2018	ND	400	100	400	3.92	
<b>TPH 8015M</b>		<b>mg/kg</b>	<b>Analyzed By: MS</b>						

Analyte	Result	Reporting Limit	Analyzed	Method Blank	BS	% Recovery	True Value QC	RPD	Qualifier
GR0 C6-C10*	<10.0	10.0	03/16/2018	ND	194	97.1	200	1.28	
DRO >C10-C28*	<10.0	10.0	03/16/2018	ND	215	107	200	3.78	
EXT DRO >C28-C36	<10.0	10.0	03/16/2018	ND					

*Surrogate: 1-Chlorooctane*      80.4 %      41-142

*Surrogate: 1-Chlorodecane*      77.4 %

37.6-147

**Cardinal Laboratories**

\*=Accredited Analyte

PLEASE NOTE: Liability and Damages. Cardinal's liability and client's exclusive remedy for any claim arising, whether based in contract or tort, shall be limited to the amount paid by client for analysis. All claims, including those for negligence and any other cause whatsoever shall be deemed waived unless made in writing and received by Cardinal within thirty (30) days after completion of the applicable service. In no event shall Cardinal be liable for incidental or consequential damages, including, without limitation, business interruptions, loss of use, or loss of profits incurred by client, its subsidiaries, affiliates or successors arising out of or related to the performance of the services hereunder by Cardinal, regardless of whether such claim is based upon any of the above stated reasons or otherwise. Results relate only to the samples identified above. This report shall not be reproduced except in full with written approval of Cardinal Laboratories.



Celey D. Keene, Lab Director/Quality Manager

### Notes and Definitions

S-06	The recovery of this surrogate is outside control limits due to sample dilution required from high analyte concentration and/or matrix interference's.
QM-07	The spike recovery was outside acceptance limits for the MS and/or MSD. The batch was accepted based on acceptable LCS recovery.
ND	Analyte NOT DETECTED at or above the reporting limit
RPD	Relative Percent Difference
**	Samples not received at proper temperature of 6°C or below.
***	Insufficient time to reach temperature.
-	Chloride by SM4500Cl-B does not require samples be received at or below 6°C Samples reported on an as received basis (wet) unless otherwise noted on report

### Cardinal Laboratories

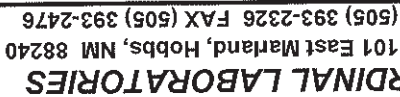
\*=Accredited Analyte

PLEASE NOTE: Liability and Damages. Cardinal's liability and client's exclusive remedy for any claim arising, whether based in contract or tort, shall be limited to the amount paid by client for analysis. All claims, including those for negligence and any other cause whatsoever shall be deemed waived unless made in writing and received by Cardinal within thirty (30) days after completion of the applicable service. In no event shall Cardinal be liable for incidental or consequential damages, including, without limitation, business interruptions, loss of use, or loss of profits incurred by client, its subsidiaries, affiliates or successors arising out of or related to the performance of the services hereunder by Cardinal, regardless of whether such claim is based upon any of the above stated reasons or otherwise. Results relate only to the samples identified above. This report shall not be reproduced except in full with written approval of Cardinal Laboratories.



Celey D. Keene, Lab Director/Quality Manager



 $\frac{1}{2}$ 

FOR LAB USE ONLY

**Sample I.D.**

14800755

02/5/00

DATE	14-11
TIME	290 311 339

+	+	+
+	+	+
+	+	+

PH Extended  
BTX  
C/.

**BILL TO**

ANALYSIS REQUEST

Relinquished By: \_\_\_\_\_

Time:

Delivered By: (Circle One)

Sampler - UPS - Bus - Other:

Sample Condition	Cool	Intact
	<input checked="" type="checkbox"/> Yes	<input checked="" type="checkbox"/> Yes
	<input type="checkbox"/> No	<input type="checkbox"/> No

CHECKED BY \_\_\_\_\_  
(initials)

SL# 21

+ Cardinal cannot accept verbal changes. Please fax written changes to 505-393-2476