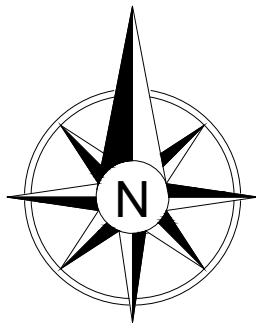
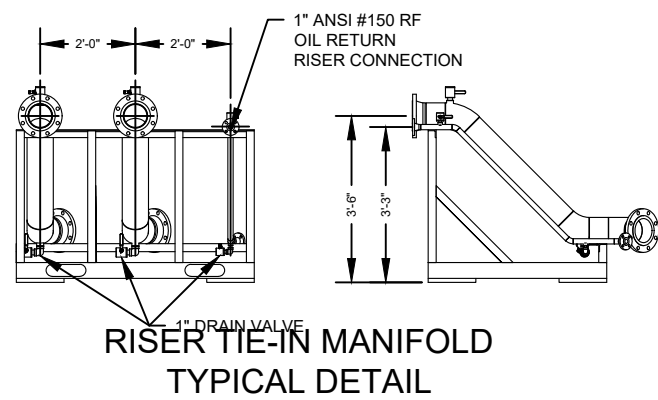
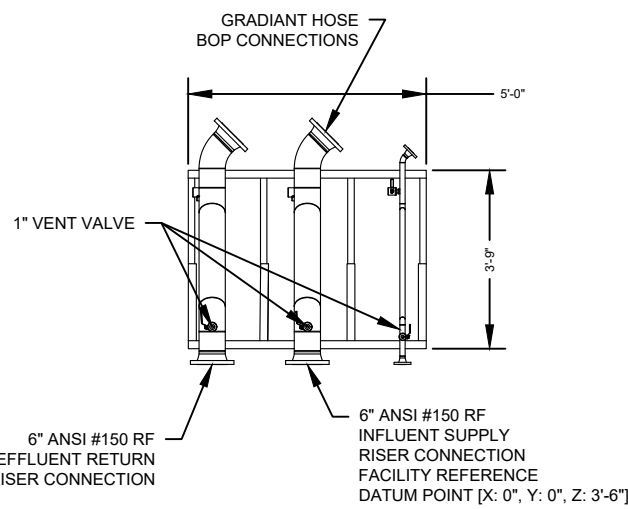


PLANT NORTH



REVISIONS			
REV	DESCRIPTION	DATE	NAME
-	INITIATED	02/13/18	JB

AREA No.	SCE MAJOR EQUIPMENT LIST
200	OWS PLATFORM
	INFLUENT PUMP STATION
	OIL WATER SEPERATOR
	OIL DISCHARGE STATION
	OWS SLUDGE PUMP STATION
	BRINE PUMP STATION
	POLYMER STATION
	BIOCIDE PUMP STATION
300	CLARIFIER PLATFORM
	CHEMICAL REACTION STATION
	CLARIFIER SYSTEM
	CLARIFIER SLUDGE PUMP STATION
	pH NEUTRALIZATION STATION
	EFFLUENT PUMP STATION
	ACID PUMP STATION
400	CAUSTIC PLATFORM
	CAUSTIC BULK STORAGE
	CAUSTIC OFFLOAD STATION
	CAUSTIC PUMP STATION
	COAG PUMP STATION
500	SOLIDS HANDLING PLATFORM
	SLUDGE DEWATERING STORAGE
	SLUDGE TRANSFER PUMP STATION
	FILTER PRESS SYSTEM
	DRY SLUDGE CONVEYOR SYSTEM
600	CENTRAL CONTROL PLATFORM
	CONTROL ROOM
	POWER DISTRIBUTION SYSTEM
	AIR COMPRESSOR STATION
	FRESH WATER STATION
700	BALANCE OF PLANT - BOP
	PROCESS CONVEYANCE - HOSE
	CHEMICAL DISTRIBUTION - TUBING
	AIR DISTRIBUTION - HOSE
	POWER DISTRIBUTION WIRING
	SIGNAL & COMMUNICATIONS CABLING
	EYEWASH STATION
	PRIMARY FACILITY SPILL CONTAINMENT
	ACID DAY TOTE CONTAINMENT
	BIOCIDE DAY TOTE CONTAINMENT
	OIL TOTE & CONTAINMENT
	RISER TIE-IN MANIFOLD
	PLATFORMS & BERM CROSS-OVERS



INITIATED

DOCUMENT SUBMITTAL STATUS	
<input checked="" type="checkbox"/> PRELIMINARY	<input type="checkbox"/> OTHER
<input type="checkbox"/> CLIENT APPROVAL	<input type="checkbox"/> CERTIFIED
<input type="checkbox"/> FOR CONSTRUCTION	<input type="checkbox"/> AS BUILT
CUSTOMER REF: <u>CHEVRON - HAYHURST NM</u>	
BY: _____	DATE: _____
GRADIANT NO.: <u>P18-0004</u>	
ENG: <u>J. Bixby</u>	DATE: <u>06/18/18</u>
PM: _____	DATE: _____
VP ENG: _____	

GENERAL NOTES:

- SITE PLAN REFERENCE DATUM SHALL BE THE NORTHWEST CORNER OF THE SWD PARCEL.

- CVX TO SURVEY AND STAKE AT MINIMUM SITE DATUM AND GRADIANT INFLUENT RISER CONNECTION LOCATION. OUTSIDE CORNERS OF CONTINMENT BERM RECOMMENDED FOR ASSET DEPLOYMENT.

GRADIANT CORPORATION 275 WILDWOOD AVE., WOBURN, MA 01801 PHONE: 781-939-0504		CLIENT: CHEVRON - HAYHURST NM PROJECT	
ORIGINAL DATE: 06/18/2018	ORIGINAL AUTHOR: JOSEPH BIXBY	SCE SYSTEM - 10K/20K/30K BPD ENGINEERING / MANUFACTURING PACKAGE DESIGN - GENERAL REFERENCE CLIENT - FACILITY OUTLINE ARRANGEMENT	
CHECKED DATE: _____	CHECKED BY: _____		
APPROVED DATE: _____	APPROVED BY: _____		
APPROVAL REQUIRED		SIZE: D	GRADIANT P/N: -
THIS DRAWING OR PRINT IS THE PROPERTY OF GRADIANT CORPORATION AND IS SUBJECT TO THE RETURN ON REQUEST. THE DESIGN CONCEPTS AND INFORMATION CONTAINED HEREIN ARE PROPRIETARY TO THAT CORPORATION AND ITS SUBSIDIARIES AND SUBMITTED IN CONFIDENCE. THEY ARE NOT TRANSFERABLE AND MUST BE USED ONLY FOR THE PURPOSE FOR WHICH THE PRINT IS EXPRESSLY LOANED. THEY MUST NOT BE DISCLOSED OR REPRODUCED OR IN ANY MANNER BE USED TO THE DETRIMENT OF GRADIANT CORPORATION. ALL PATENT RIGHTS ARE RESERVED UNLESS THEY ARE SPECIFICALLY ASSIGNED IN WRITING.		DWG NO. P18-0004-000-001	REV: 3
SCALE: 1/16"=1'-0"		JOB CODE: CONFIDENTIAL	SHEET: 1 OF 1